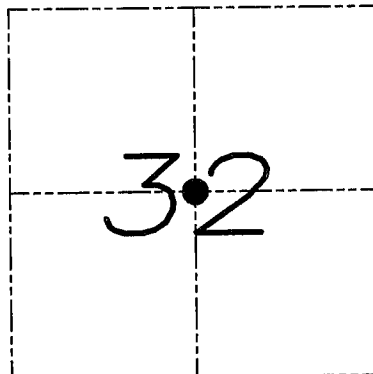


# U.S. PUBLIC LAND SURVEY MONUMENT RECORD

Section 32, Town 4 North Range 3 West, Town of South Lancaster, Grant County, Wisconsin

## CERTIFICATE

I, Larry L. Austin, do hereby certify that the corner location on this record was determined by me and/or under my direct supervision and that this U.S. public land survey monument record is correct and complete to the best of my knowledge and belief.



● = CORNER LOCATION

*Larry L. Austin*  
Larry L. Austin, S-1903



## HISTORY OF CORNER

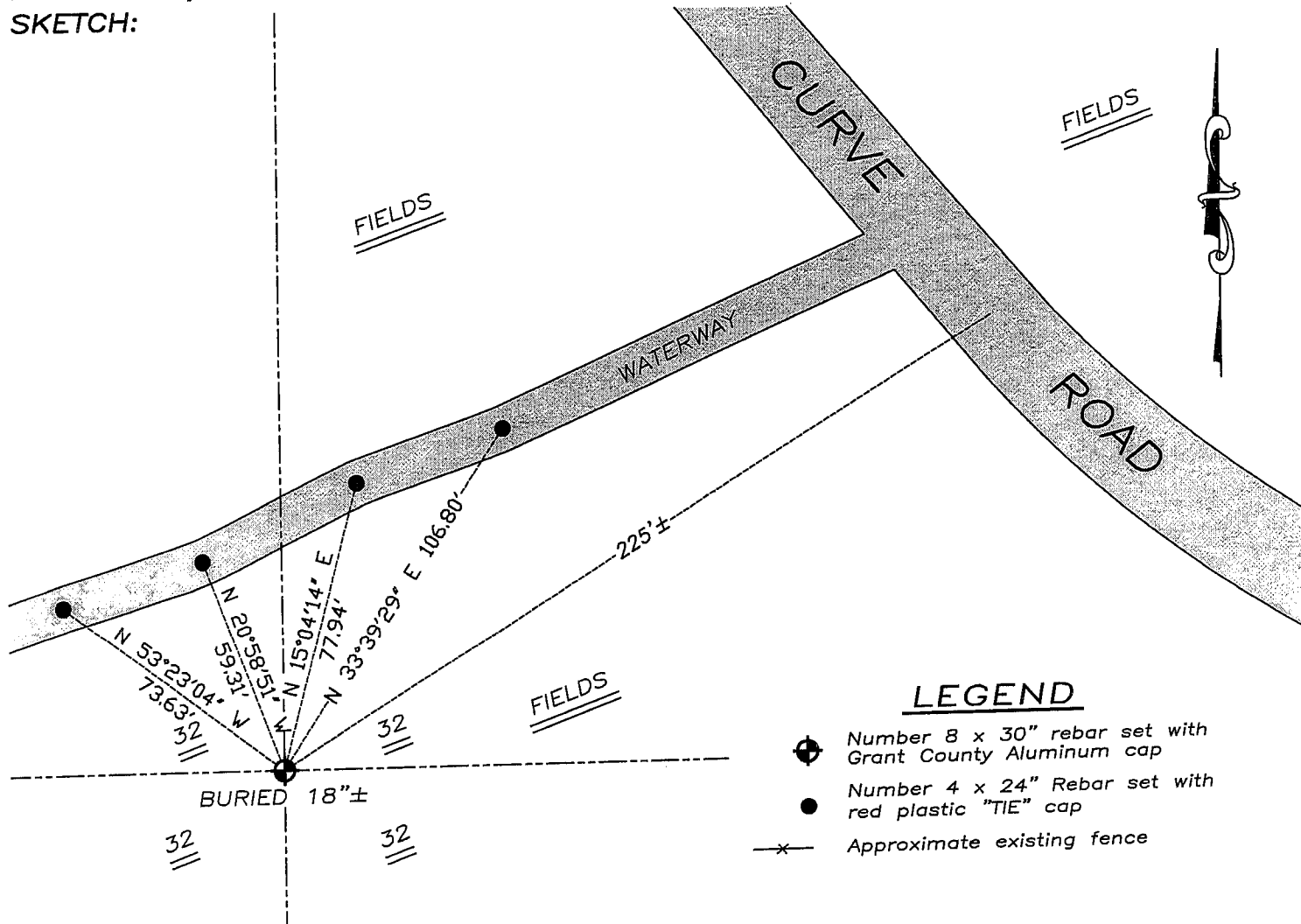
Corner was originally set in 1854 by Clark. No other record of the corner was found.

## CORNER EVIDENCE FOUND

I reset the corner based on the methods used by Clark. I set the corner equidistant on the 1/4 lines. This location fit both monumented and occupied adjoining corners. Verified this location using EDM & GPS methods.

**DESCRIPTION OF CORNER AND WITNESS MONUMENTS,** references and accessories used to perpetuate the original or re-established location of this corner. Witnesses to monument location Bobby Sedgwick & Brad Digman & Shelby Blindert

## SKETCH:



## LEGEND

- ⊕ Number 8 x 30" rebar set with Grant County Aluminum cap
- Number 4 x 24" Rebar set with red plastic "TIE" cap
- x- Approximate existing fence

NOT TO SCALE



**Austin Engineering LLC**

4211 HWY 81 E, LANCASTER, WI 53813  
PHONE 608-723-6363 FAX 608-723-6702

JOB NUMBER 07S234  
FIELDBOOK: TDSR, 2711  
G:\T3NR3W\T3NR3WBS  
H:\TIE\T4NR3W\115A

DRAWN BY: BL STANFLEY  
APPROVED: LL AUSTIN

115A