

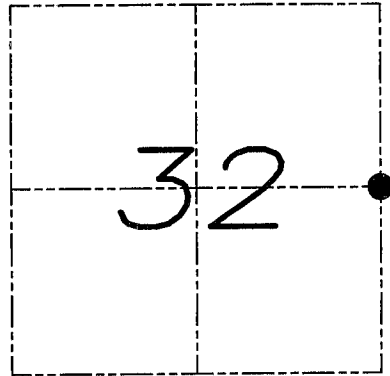
U.S. PUBLIC LAND SURVEY MONUMENT RECORD

Section 32, Town 4 North Range 3 West, Town of South Lancaster, Grant County, Wisconsin

CERTIFICATE

I, Larry L. Austin, do hereby certify that the corner location on this record was determined by me and/or under my direct supervision and that this U.S. public land survey monument record is correct and complete to the best of my knowledge and belief.

Larry L. Austin
 Larry L. Austin, S-1903 LANCASTER WI date 7/20/08



● = CORNER LOCATION

HISTORY OF CORNER

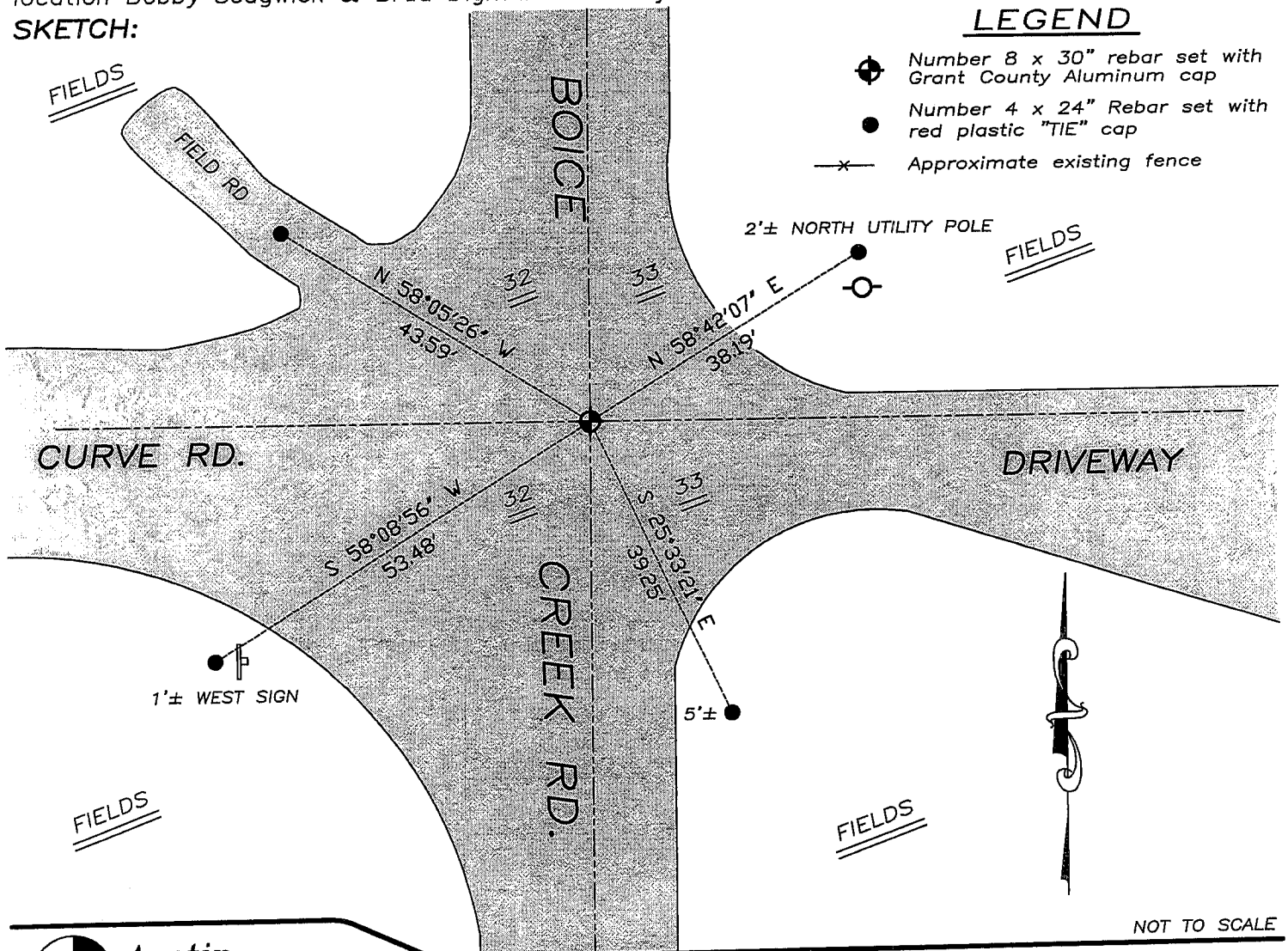
Corner was originally set in 1833 by Clark. In 1854 Clark set new bearing trees for the original corner. No other record of the corner was found.

CORNER EVIDENCE FOUND

I reset the corner at an occupied location. Verified this location using EDM & GPS methods.

DESCRIPTION OF CORNER AND WITNESS MONUMENTS, references and accessories used to perpetuate the original or re-established location of this corner. Witnesses to monument location Bobby Sedgwick & Brad Digman & Shelby Blindert

SKETCH:



Austin Engineering LLC

4211 HWY 81 E, LANCASTER, WI 53813
 PHONE 608-723-6363 FAX 608-723-6702

JOB NUMBER 07S234
 FIELDBOOK: TDSR, 2711
 G:\T3NR3W\T3NR3WBS
 H:\TIE\T4NR3W\116

DRAWN BY: BL STANFLEY
 APPROVED: LL AUSTIN