

GRANT COUNTY

Survey Monument Record

TYPE OF MONUMENT 3/4" X 24" IRON BAR SET

STATE PLANE COORDINATES: N W/ CAP
E _____

ELEVATION — M.S.L. DATUM: _____

THETA ANGLE: _____

FIELD BOOK: 96-01

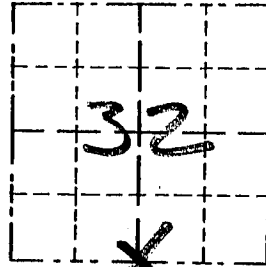
PAGE _____

CORNER NO. _____

SECTION 32

TOWN 4N

RANGE 3W



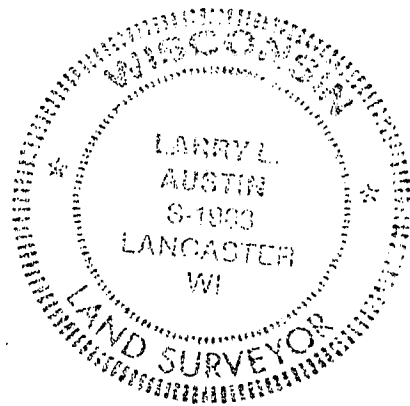
LOCATION
(Indicated by "X")

BASIS FOR MONUMENT LOCATION

(Use reverse side if necessary)

ORIGINAL CORNER SET IN
1832 B4 SIBLEY. I
ACCEPTED OCCUPATION
LOCATION & VERIFIED BY
EDM TRAVERSE OF THE
AREA.

SEAL:



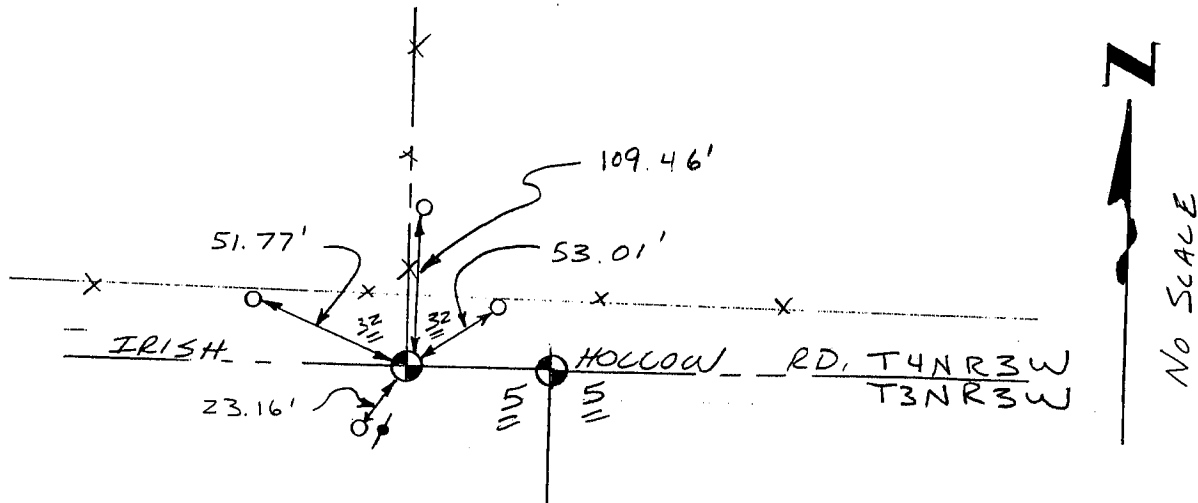
CERTIFIED CORRECT

Larry L. Austin
Registered Land Surveyor

DATE: 2/18/98

TIE SKETCH

Show at least three (3) ties and monument.



LEGEND

- ⊕ 3/4" X 24" IRON BAR SET
W/ CAP
- 1" IRON PIPE SET
- ⚡ POWER POLE
- ✕✕ EXISTING FENCE

REC'D FEB 10 1997

Survey Monument Record

TYPE OF MONUMENT 3/4" REBAR w/ GRANT CO. ALUM. CAP

STATE PLANE COORDINATES: N _____
E _____

ELEVATION — M.S.L. DATUM: _____

THETA ANGLE: _____

FIELD BOOK: 96-2 97-1

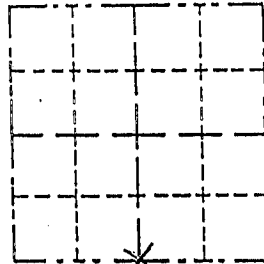
PAGE 70 69

CORNER NO. _____

SECTION 32

TOWN 4N

RANGE 3W



LOCATION
(Indicated by "X")

- FOUND PERPETUATED LOCATION
- OBLITERATED EVIDENCE LOCATION
- LOST CORNER (RESTORED BY PROPORTIONATE METHODS)

BASIS FOR MONUMENT LOCATION

(Use reverse side if necessary)

Show info such as: History of corner, with reference to Vol. and pg., dates, surveyor; exact description of monument replaced; if location computed, by taped or EDM traverse; landowner, remarks, etc.

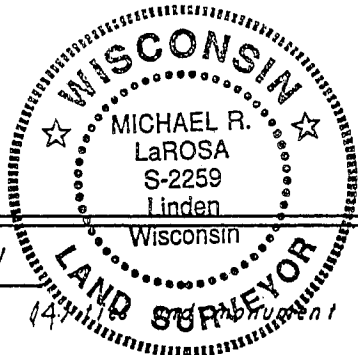
Found and accepted an aluminum capped 3/4" REBAR at the corner location as established by Larry Austin in early 1996. Corner was noted in a survey by myself dated 4/18/1996. Larry's tie sheet was not on file (as per our phone conversation on 4/17/96) as of this date, 2/4/1997 and this sheet is being filed as per A.E. 7.08.

CERTIFIED CORRECT TO THE BEST OF MY KNOWLEDGE AND BELIEF

Michael R. LaRosa

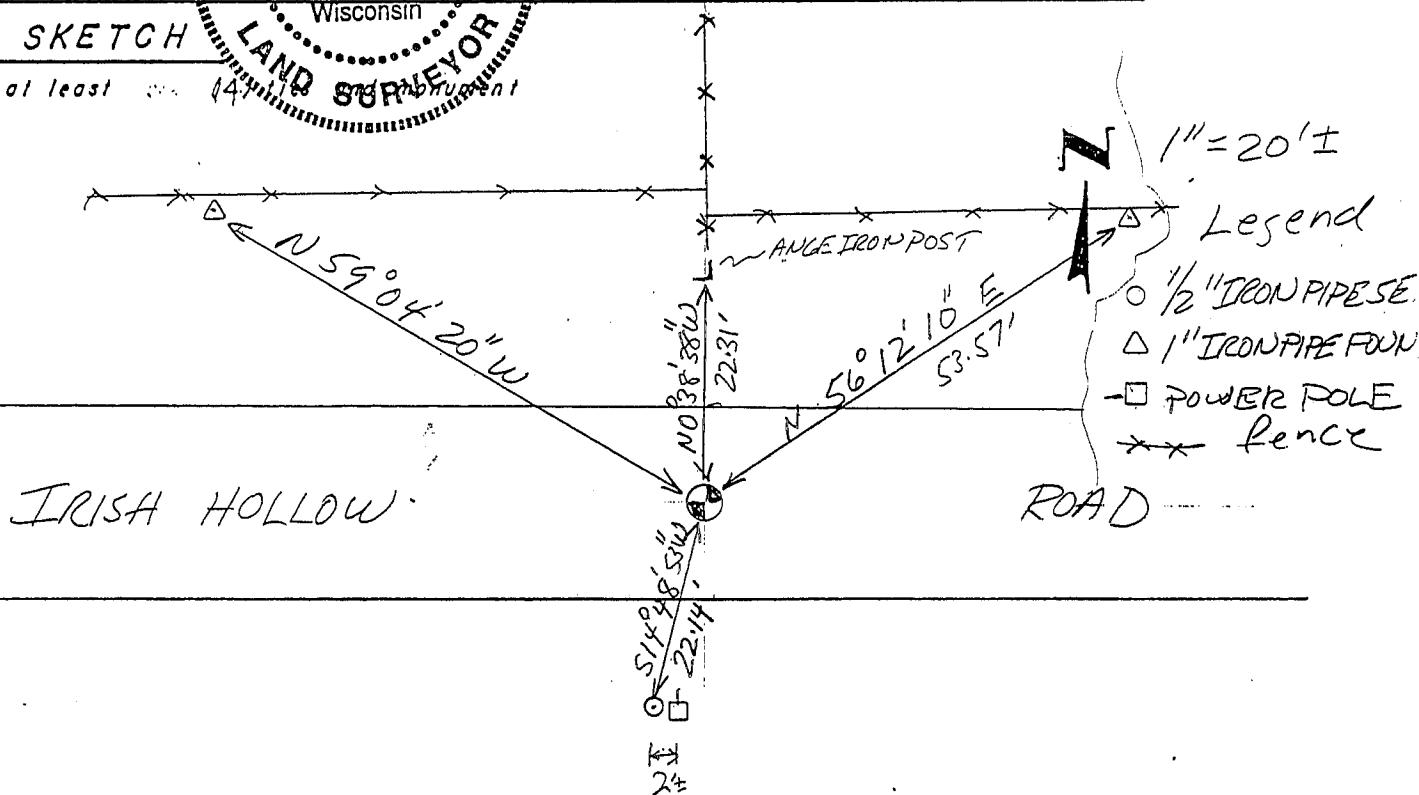
Registered Land Surveyor

DATE: 2/4/1997



TIE SKETCH

Show at least _____



GRANT COUNTY

Survey Monument Record

TYPE OF MONUMENT 3/4" X 24" IRON BAR SET

STATE PLANE COORDINATES: N W/CAP
E _____

ELEVATION — M.S.L. DATUM: _____

THETA ANGLE: _____

FIELD BOOK: 96-01

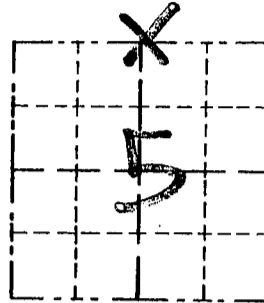
PAGE _____

CORNER NO. _____

SECTION 5

TOWN 37

RANGE 3W



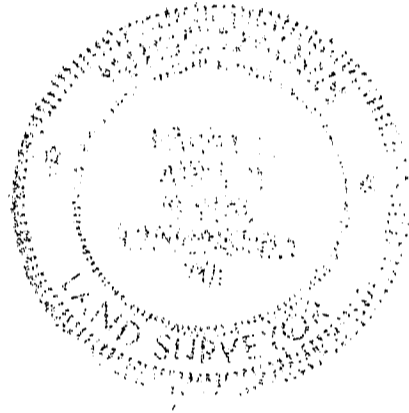
LOCATION
(Indicated by "X")

BASIS FOR MONUMENT LOCATION

(Use reverse side if necessary)

SAMPSON SET THE CORNER IN 1892; I RE-ESTABLISHED THE CORNER AT THE AVERAGE OF THE RECORDED OFFSETS AT THE NE COR & THE NW COR OF SEC. 5 AT RECORDED IN THE 0214. NOTES BY CLARK IN 1833; & ON THE SOUTH LINE OF SEC. 32, T4N, R3W; THIS LOCATION FITS WELL TO AN OCCUPIED "40" TO THE EAST. VERIFIED THIS LOCATION BY EDM TRAVERSE.

SEAL:



CERTIFIED CORRECT

Jerry J. Anst
Registered Land Surveyor

DATE: 2/18/98

TIE SKETCH

Show at least three (3) ties and monument

