

GRANT COUNTY

Survey Monument Record

TYPE OF MONUMENT 3/4" X 24" IRON BAR SET

STATE PLANE COORDINATES: N W/CAP

E _____

ELEVATION — M.S.L. DATUM: _____

THETA ANGLE: _____

FIELD BOOK: 96-01

PAGE _____

CORNER NO. _____

SECTION 32

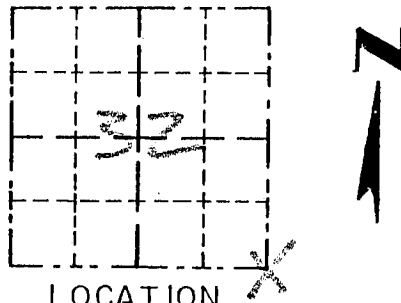
TOWN 4N

RANGE 2W

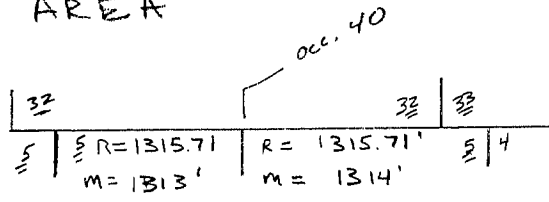
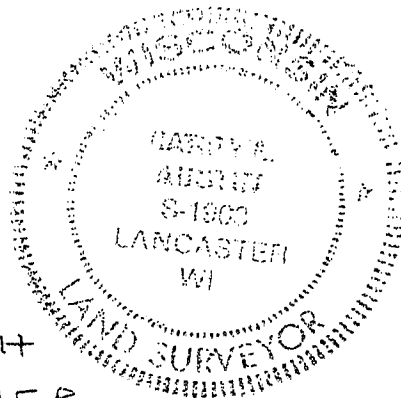
BASIS FOR MONUMENT LOCATION

(Use reverse side if necessary)

ORIGINAL CORNER SET IN 1832 BY SIBLEY. IN 1892 C. SAMPSON LOCATED THE CORNER. USING REMAINS OF BEARING TREES. I ESTABLISHED THE CORNERS USING EXISTING &'S EAST-WEST AND PROJECTION FROM NORTH. THIS LOCATION FIT WELL WITH OCCUPIED 40 EAST/WEST OF CORNER VERIFIED BY EDM TRAVERSE OF AREA



LOCATION
(Indicated by "X")



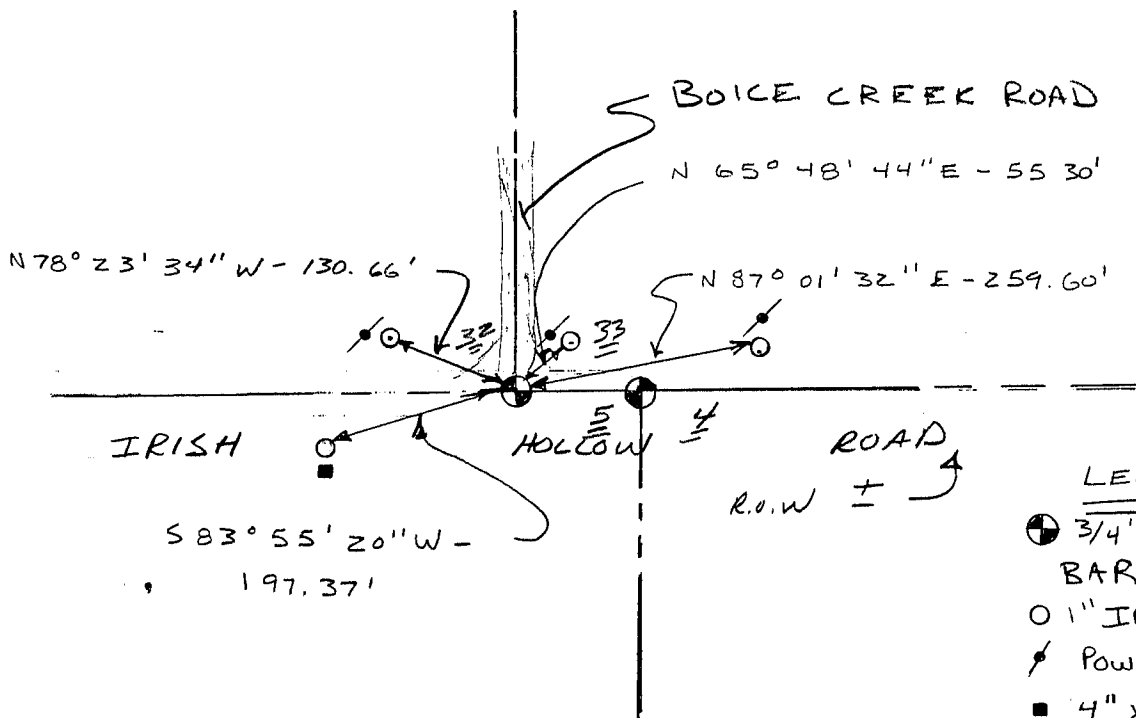
CERTIFIED CORRECT

Cary J. Rust
Registered Land Surveyor

DATE: 2/12/98

TIE SKETCH

Show at least three (3) ties and monument



LEGEND

- ⊙ 3/4" X 24" IRON BAR W/ CAP
- 1" IRON PIPE SET
- ⚡ POWER POLE
- 4" X 4" TELEPHONE BOX W/ POST AT BACK

GRANT COUNTY

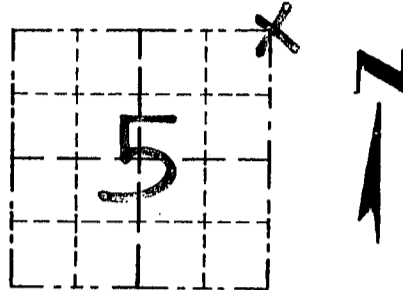
Survey Monument Record

TYPE OF MONUMENT 3/4" X 24" IRON BAR
 STATE PLANE COORDINATES: N SET W/CAP.
 E _____
 ELEVATION — M.S.L. DATUM: _____
 THETA ANGLE: _____
 FIELD BOOK: 96-01
 PAGE _____

CORNER NO. _____
 SECTION 5
 TOWN 3N
 RANGE 3W

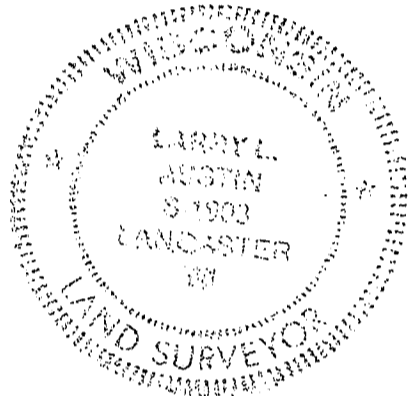
BASIS FOR MONUMENT LOCATION

(Use reverse side if necessary)



LOCATION
(Indicated by "X")

ORIGINAL CORNER SET IN 1833
 BY R. CLARK. IN 1892 C. SEAL:
 SAMPSON RE-ESTABLISHED THE
 CORNER AT THE RECORDED OFFSET
 OF 1.98 CHAINS EAST OF THE
 SW CORNER OF SEC. 33, T4N, R3W;
 I SET THE CORNER AT THE
 ABOVE OFFSET ON THE SOUTH
 LINE SECTION 33; THIS LOCATION
 FITS THE OCCUPIED "40" CORNER
 TO THE EAST; ACCEPTED THIS AS
 THE CORNER LOCATION AFTER
 VERIFICATION BY EDM TRAVERSE,



CERTIFIED CORRECT

Larry L. Justin
 Registered Land Surveyor

DATE: 2/18/98

TIE SKETCH

Show at least three (3) ties and monument

