

U.S. PUBLIC LAND SURVEY MONUMENT RECORD – GRANT COUNTY, WI

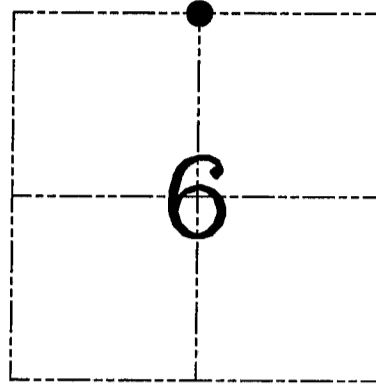
Section 6, Town 3 North Range 3 West, Town of Potosi

CERTIFICATE

I, Larry L. Austin, do hereby certify that the corner location on this record was determined by me and/or under my direct supervision and that this U.S. public land survey monument record is correct and complete to the best of my knowledge and belief.

Dated this 16th day of March, 2005

Larry L. Austin
Larry L. Austin S-1903



● = CORNER LOCATION

HISTORY OF CORNER ESTABLISHMENT

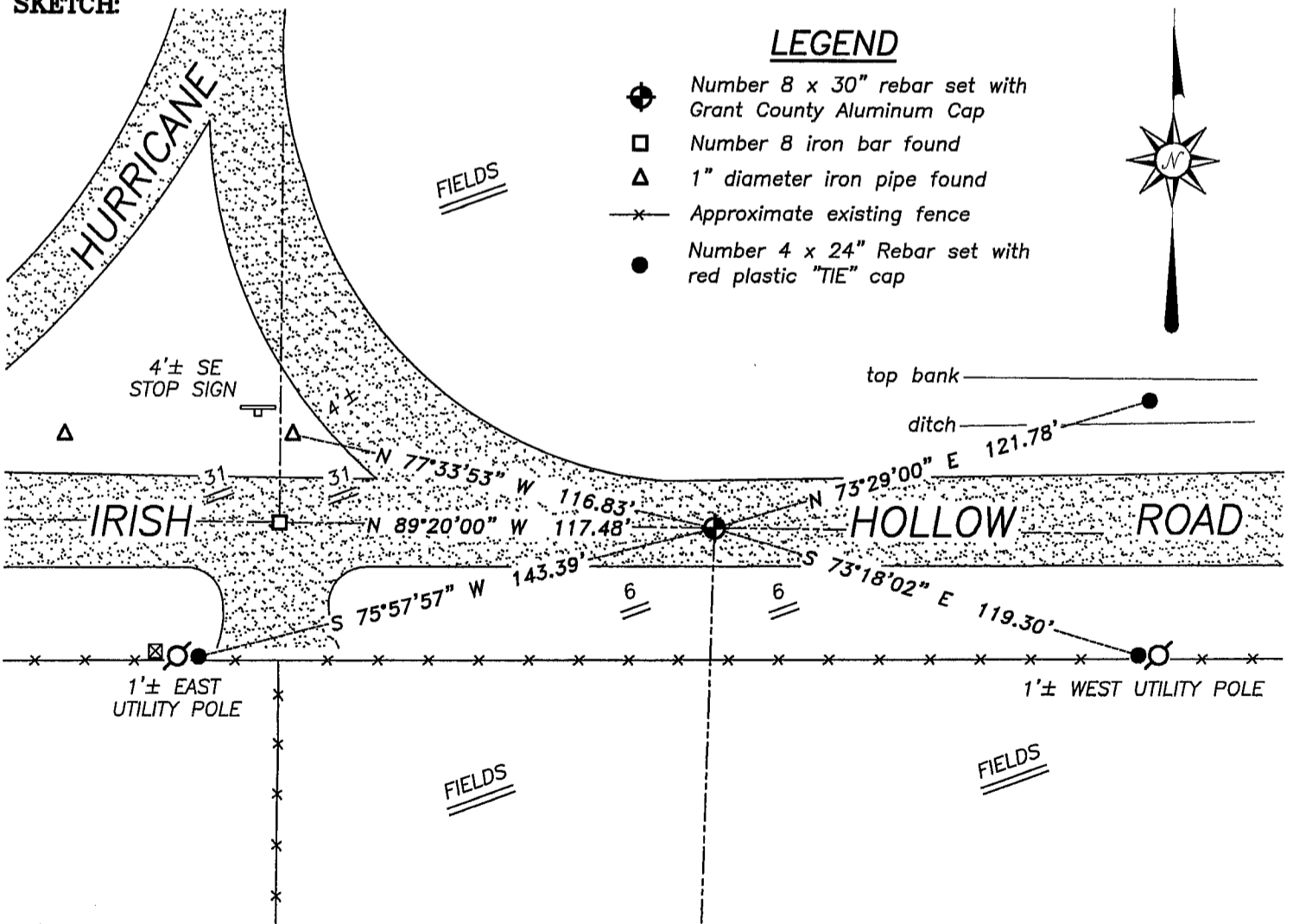
Corner was never originally set. In 1880 Barber showed the corner on a plat. In 1899 Sampson drove a stake at this corner. No other record of the corner was found.

DESCRIPTION OF CORNER EVIDENCE FOUND

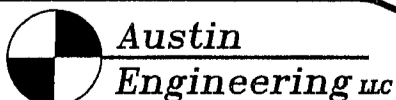
I set the monument at the correct offset from the existing South 1/4 of Section 31, T4N R3W. Verified this location using EDM & GPS methods.

DESCRIPTION OF CORNER AND WITNESS MONUMENTS, references and accessories used to perpetuate the original or re-established location of this corner. Witnesses to corner location Bobby Sedgwick & Shane Austin & Brad Digman

SKETCH:



SKETCH NOT TO SCALE



4211 HWY 81 E, LANCASTER, WI 53813
PHONE 608-723-6363 FAX 608-723-6702

JOB NUMBER 05S022
 FIELDBOOK: TDSR, 2517
 G:\T3NR3W\T3NR3W
 H:\TIE\T3NR3W\12

DRAWN BY: SW AUSTIN
 APPROVED: LL AUSTIN

GRANT COUNTY

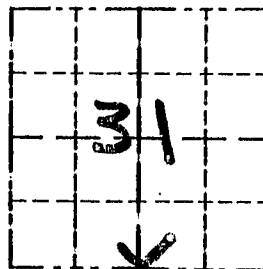
Survey Monument Record

TYPE OF MONUMENT 1" IRON BAR SET
 STATE PLANE COORDINATES: N _____
 E _____
 ELEVATION — M.S.L. DATUM: _____
 THETA ANGLE: _____
 FIELD BOOK: 95-04
 PAGE _____

CORNER NO. _____
 SECTION 31
 TOWN 4N
 RANGE 3W

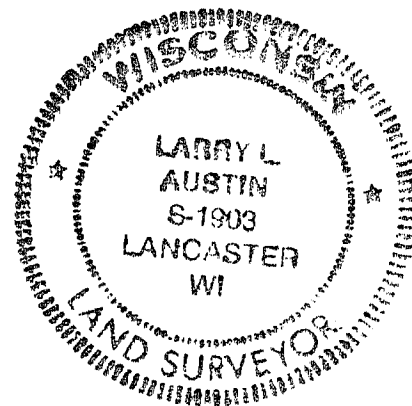
BASIS FOR MONUMENT LOCATION

(Use reverse side if necessary)



LOCATION
 (Indicated by "X")

CORNER ORIGINALLY SET IN 1832 BY SIBLEY; EXTERIOR BOUNDARIES SEAL OF THE SECTION RESURVEYED IN 1899 BY CHARLES SAMPSON. IN 1990 I RE-ESTABLISHED CORNER. IN 1995 I RESET THE CORNER BASED ON FOUND TIES. VERIFIED ITS LOCATION BY EDM TRAVERSE OF THE AREA.



CERTIFIED CORRECT

Larry L. Austin
 Registered Land Surveyor

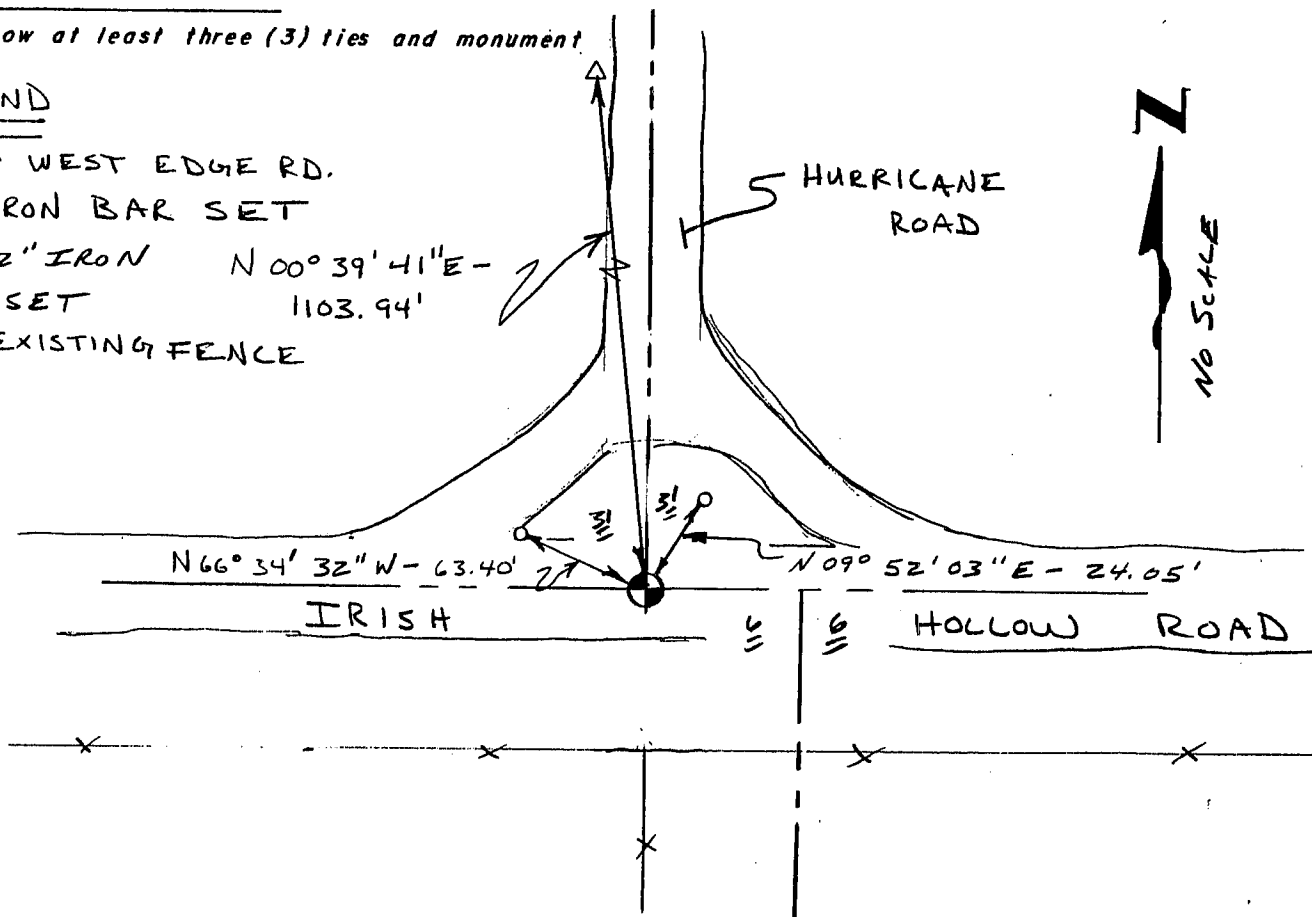
DATE: 5-20-96

TIE SKETCH

Show at least three (3) ties and monument.

LEGEND

- △ RR&SF WEST EDGE RD.
- ⊕ 1" IRON BAR SET
- 1" x 12" IRON PIPE SET
- X — EXISTING FENCE



S. Lancaster

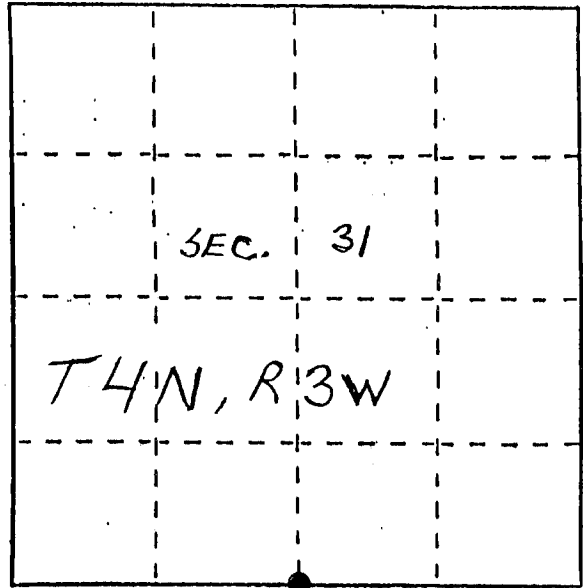
U. S. PUBLIC LAND SURVEY MONUMENT RECORD

INSTRUCTIONS: This record shall show the location of the corner and shall include all of the following nine elements (a through i).

(a) Identify the corner by reference to the U.S. public land survey system.

O = Corner monument restored.

SOUTH 1/4 CORNER SEC. 31
T. 4N, R. 3W; SOUTH LANCASTER
TWP., GRANT CO. WI.



(b) Describe any record evidence, monument evidence, occupational evidence, testimonial evidence or any other material evidence you considered, and whether the monument was found or placed.

CORNER WAS PLACED BASED ON OCCUPATIONAL EVIDENCE & VERIFIED BY EDM TRAVERSE

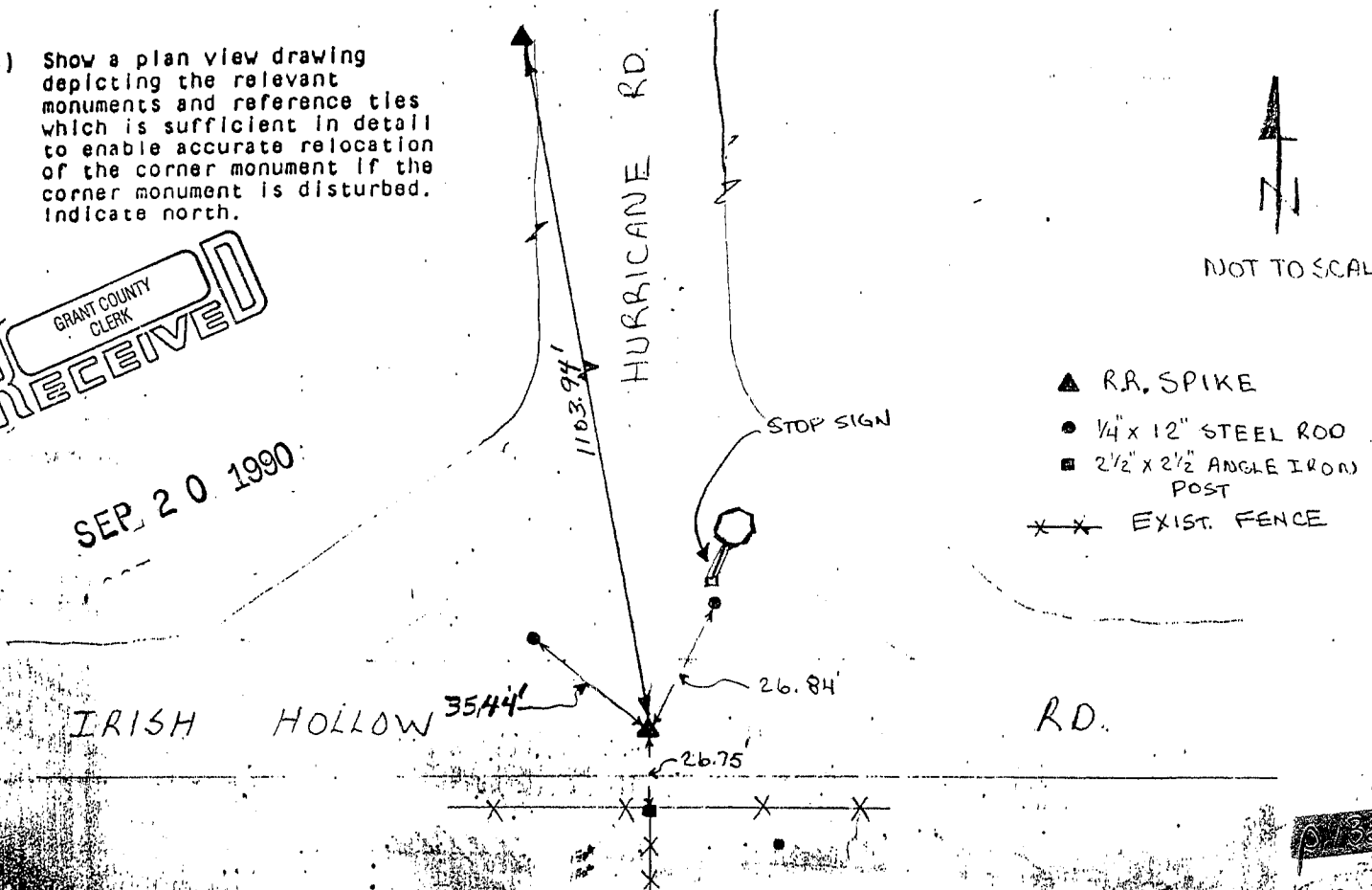
(c) In the plan view drawing below, provide reference ties to at least 4 witness monuments, or, if the location is within a municipality, to at least 2 witness monuments. (Witness monuments shall be made of concrete, natural stone, iron or other equally durable material.) Describe witness monuments.

(d) Show a plan view drawing depicting the relevant monuments and reference ties which is sufficient in detail to enable accurate relocation of the corner monument if the corner monument is disturbed. Indicate north.

GRANT COUNTY CLERK RECEIVED

SEP 20 1990

NOT TO SCALE



032

(e) Describe any material discrepancy between the location of the corner as restored or reestablished and the location of that corner as previously restored or reestablished by distance and direction. Show the discrepancy on the plan view drawing under (d), above. Show the distances between the corner as previously restored or reestablished and (1) the corner as restored or reestablished, and (2) to at least 2 of the witness monuments shown on the drawing in (d), above.

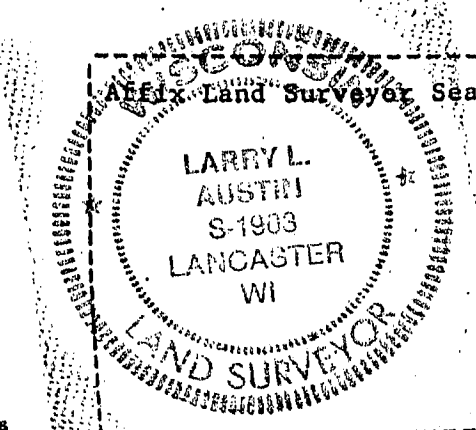
NONE

(f) Was the corner restored through acceptance of (1) an obliterated evidence location, or, (2) a found perpetuated location?

(2) FOUND PERPETUATED LOC.

(g&h) Was the corner reestablished through lost corner proportionate methods? If so, show the method, including the directions and distances to other public land survey corners used as evidence or used for proportioning in determining the corner location?

NO.



(i) I, LARRY L. AUSTIN
(type or print name) certify that the corner location shown
on this record was determined by me or under my direction and
control and that this U.S. Public Land Survey Monument Record is
correct and complete to the best of my knowledge and belief.

Randy R. Austin Date 1/8/90