

REC'D JAN 29 19 5

# GRANT COUNTY

## Survey Monument Record

TYPE OF MONUMENT 3/4" x 24" IRON BAR

STATE PLANE COORDINATES: N \_\_\_\_\_  
E \_\_\_\_\_

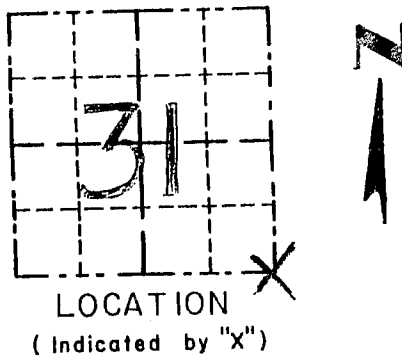
ELEVATION — M.S.L. DATUM: \_\_\_\_\_

THETA ANGLE: \_\_\_\_\_

FIELD BOOK: 9504

PAGE 6

CORNER NO. 131  
SECTION 31  
TOWN 411  
RANGE 3 W



### BASIS FOR MONUMENT LOCATION

(Use reverse side if necessary)

Show info such as: History of corner, with reference to Vol. and pg., dates, surveyor; exact description of monument replaced; if location computed, by taped or EDM traverse; landowner, remarks, etc.

SEAL:

CORNER ORIGINALLY SET IN 1832 BY SIBLEY ; EXTERIOR BOUNDARIES OF THE SECTION RESURVEYED IN 1899 BY CHARLES SAMPSON. I RE-ESTABLISHED THE CORNER BASED ON OCCUPATION TO THE SOUTH & AT THE OFFSET DISTANCE RECORDED FOR SECTION 6, T3N, R3W. THIS LOCATION FITS WELL WITH OTHER CORNERS; VERIFIED ITS LOCATION BY EDM TRAVERSE OF THE AREA.

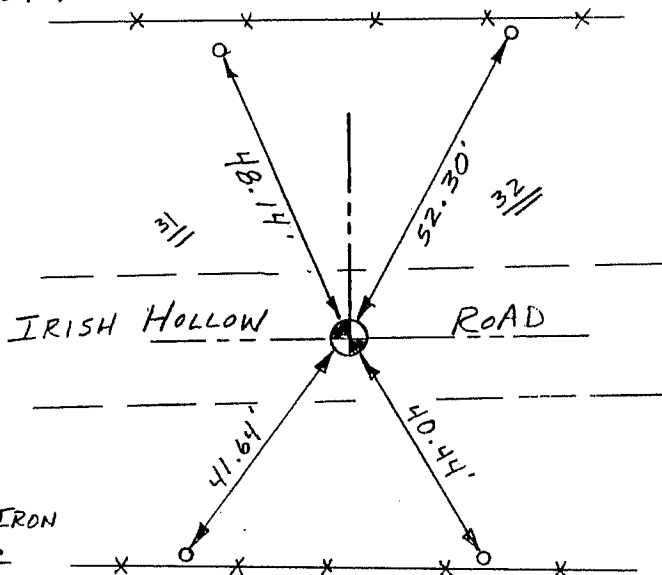
CERTIFIED CORRECT

*Henry R. East*  
Registered Land Surveyor

DATE: 4/22/95

### TIE SKETCH

Show at least three (3) ties and monument



NO SCALE

#### LEGEND

● 3/4" x 24" SMOOTH IRON BAR SET = CORNER

○ 1" x 12" IRON PIPE SET = TIES

\* \* \* EXISTING FENCE

# Survey Monument Record

TYPE OF MONUMENT 3/4" Rebar set

STATE PLANE COORDINATES: N \_\_\_\_\_  
E \_\_\_\_\_

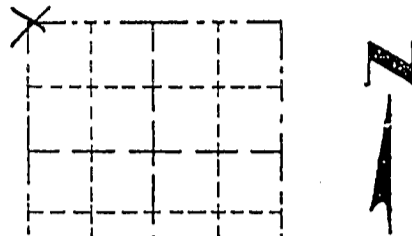
ELEVATION — M.S.L. DATUM: \_\_\_\_\_

THETA ANGLE: \_\_\_\_\_

FIELD BOOK: 96-2

PAGE \_\_\_\_\_

CORNER NO. \_\_\_\_\_  
SECTION 5  
TOWN 3N  
RANGE 3W



## BASIS FOR MONUMENT LOCATION

(Use reverse side if necessary)

Show info such as: History of corner, with reference to Vol. and pg., dates, surveyor; exact description of monument replaced; if location computed, by taped or EDM traverse; landowner, remarks, etc.

LOCATION  
(Indicated by "X")

- FOUND PERPETUATED LOCATION
- OBLITERATED EVIDENCE LOCATION
- LOST CORNER (RESTORED BY PROPORTIONATE METHODS)

Sampson noted a 1.78 chain offset for this corner in 1899 (note from Wisconsin Land Dept. dated 10/23/89, folded up and in original note books). Monument was placed on line between a 3/4" rebar at the SE corner of 31-4N-3W and an Aluminum capped rebar at the SW corner of 32-4N-3W at this offset and fell about 0.92' south of a destroyed spike in the road.

CERTIFIED CORRECT TO THE BEST OF MY KNOWLEDGE AND BELIEF

Michael R. LaRosa  
Registered Land Surveyor

DATE: 4/18/1996



## TIE SKETCH

Show at least \_\_\_\_\_ monument

