

U.S. PUBLIC LAND SURVEY MONUMENT RECORD - GRANT COUNTY, WI

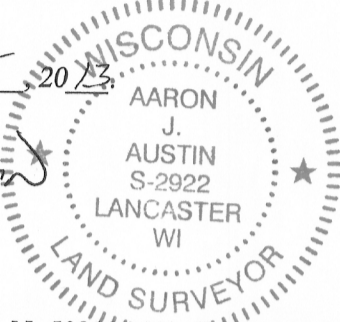
Section 25, Town 4 North Range 3 West, Town of South Lancaster

CERTIFICATE:

I, Aaron J. Austin, do hereby certify that the corner location on this record was determined by me and/or under my direct supervision and that this U.S. Public Land Survey Monument Record is correct and complete to the best of my knowledge and belief.

Dated this 15 th day of AUGUST 2013.

Aaron J. Austin
 Aaron J. Austin, S-2922



● = CORNER LOCATION

GRANT COUNTY COORDINATES: N=5031051.79' E=826444.56'

HISTORY OF CORNER ESTABLISHMENT:

- 1833-Robert Clark set original corner.
- 1844-Wiltse tied to the corner on a Survey filed in Book A, Page 175.
- 1858-Hayden tied to the corner on a Survey filed in Book C, Page 183.
- 1849-Stuntz set a Stone on a Survey filed in Book G, Page 183.
- 1996-Burbach set a P.K. Nail on a Survey filed in Book Y, Page 19.

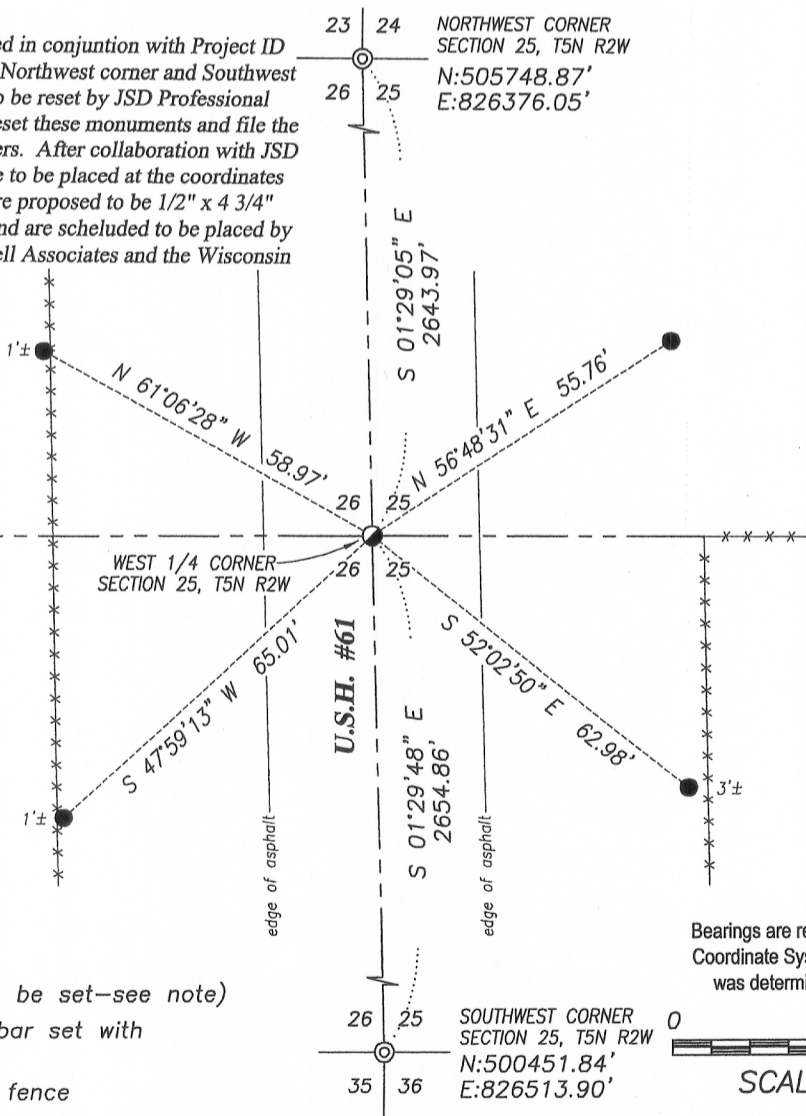
DESCRIPTION OF CORNER EVIDENCE FOUND:

P.K. Nail set by Burbach was unable to be recovered due to resurfacing of Highway #61. On Burbach's survey, this corner was dimensioned online and equidistant between the Northwest corner and Southwest corner of Section 25. I did not accept the location established by Burbach. I reset a Mag Nail at the occupied fence East and centerline of Highway #61. I verified this location with G.P.S. methods.

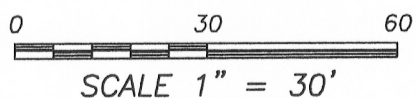
DESCRIPTION OF CORNER AND WITNESS MONUMENTS, references and accessories used to perpetuate the original or re-established location of this corner. Witnesses to corner location Bobby Sedgwick and Shelby Blindert.

SKETCH:

NOTE:
 Highway #61 was recently resurfaced in conjunction with Project ID 1650-06-71. Under this project, the Northwest corner and Southwest corner of Section 25 were lost and to be reset by JSD Professional Services, Inc are under contract to reset these monuments and file the appropriate tie sheets for these corners. After collaboration with JSD on this project, those monuments are to be placed at the coordinates shown hereon. These monuments are proposed to be 1/2" x 4 3/4" Steel Cotton Gin Spikes (per JSD) and are scheduled to be placed by April 1st, 2012 as requested by Jewell Associates and the Wisconsin Department of Transportation.

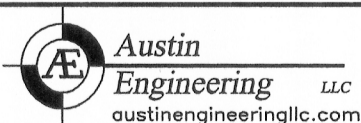


Bearings are referenced to the Grant County Coordinate System (2007 adjustment) which was determined by G.P.S. observation.



LEGEND

- Mag Nail Set
- ⊙ Cotton Gin Spike (to be set—see note)
- Number 4 x 24" Rebar set with red plastic "TIE" cap
- *-*- Approximate existing fence



4211 HWY 81 E, LANCASTER, WI 53813
 PHONE: 608-723-6363 FAX: 608-723-6702

JOB NO: 11s192
 G:\GRANTDOT\HWY61B
 H:\TIE\T4NR3W\99

FIELDBOOK: TDSR
 DRAWN BY: AJ AUSTIN
 CREW: BS-SB