

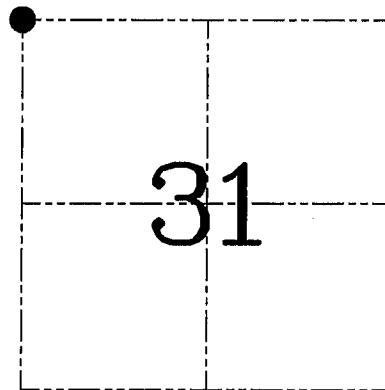
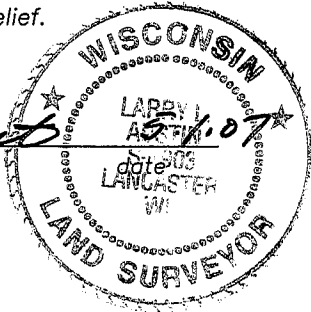
U.S. PUBLIC LAND SURVEY MONUMENT RECORD – GRANT COUNTY, WI

Section 31, Town 4 North Range 2 West, Town of Ellenboro

CERTIFICATE

I, Larry L. Austin, do hereby certify that the corner location on this record was determined by me and/or under my direct supervision and that this U.S. public land survey monument record is correct and complete to the best of my knowledge and belief.

Larry L. Austin
Larry L. Austin, S-1903



● = CORNER LOCATION

HISTORY OF CORNER ESTABLISHMENT

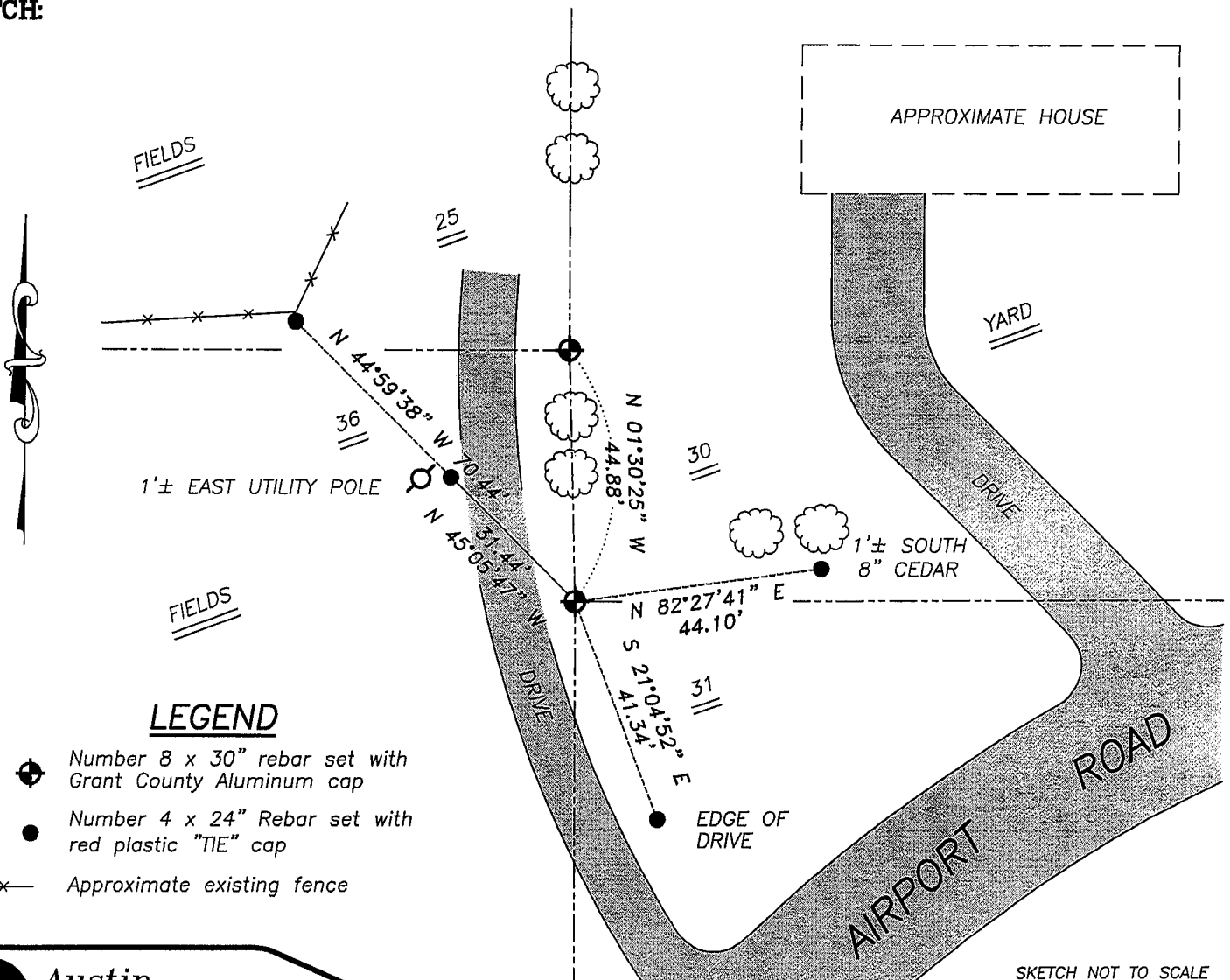
Corner was originally set in 1833 by Clark.
No other record of the corner was found.

DESCRIPTION OF CORNER EVIDENCE FOUND

I reset the corner at the recorded offset from the Northeast Corner of Section 36, T4N R3W. Verified this location using EDM & GPS methods.

DESCRIPTION OF CORNER AND WITNESS MONUMENTS, references and accessories used to perpetuate the original or re-established location of this corner. Witnesses to corner location Bobby Sedgwick & Brad Digman & Shelby Blindert

SKETCH:



Austin Engineering LLC

4211 HWY 81 E, LANCASTER, WI 53813
PHONE 608-723-6363 FAX 608-723-6702

JOB NUMBER 07S042
FIELDBOOK: TDSR, 2613
G:\T4NR2W\T4NR2W
H:\TIE\T4NR2W\113

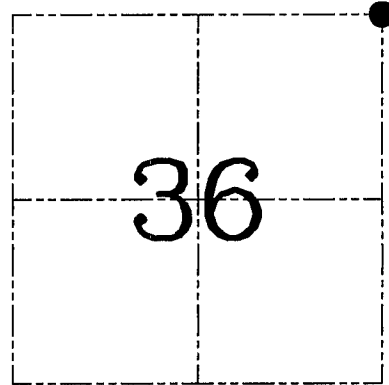
DRAWN BY: SW AUSTIN
APPROVED: LL AUSTIN

U.S. PUBLIC LAND SURVEY MONUMENT RECORD – GRANT COUNTY, WI
Section 36, Town 4 North Range 3 West, Town of South Lancaster

CERTIFICATE

I, Larry L. Austin, do hereby certify that the corner location on this record was determined by me and/or under my direct supervision and that this U.S. public land survey monument record is correct and complete to the best of my knowledge and belief.

Larry L. Austin
 Larry L. Austin, S-1903



● = CORNER LOCATION

HISTORY OF CORNER ESTABLISHMENT

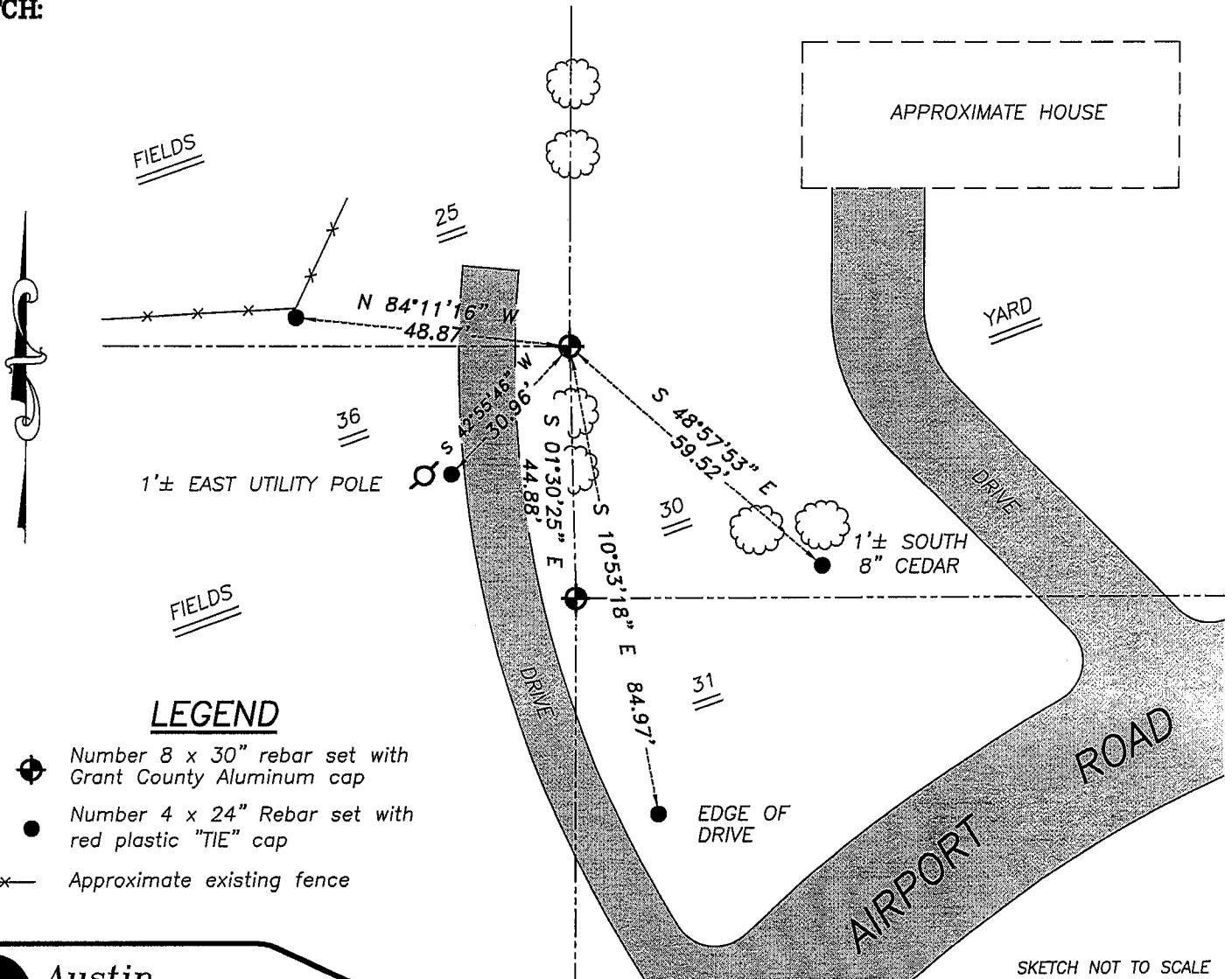
Corner was originally set by Lyon. In 1986 Bowden tied to the corner. No other record of the corner was found.

DESCRIPTION OF CORNER EVIDENCE FOUND

I reset the corner based on Bowden's location. Verified this location using EDM & GPS methods.

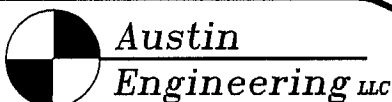
DESCRIPTION OF CORNER AND WITNESS MONUMENTS, references and accessories used to perpetuate the original or re-established location of this corner. Witnesses to corner location Bobby Sedgwick & Brad Digman & Shelby Blindert

SKETCH:



LEGEND

- Number 8 x 30" rebar set with Grant County Aluminum cap
- Number 4 x 24" Rebar set with red plastic "TIE" cap
- x- Approximate existing fence



4211 HWY 81 E, LANCASTER, WI 53813
 PHONE 608-723-6363 FAX 608-723-6702

JOB NUMBER 07S042
 FIELDBOOK: TDSR, 2613
 G:\T4NR2W\T4NR2W
 H:\TIE\T4NR3W\101

DRAWN BY: SW AUSTIN
 APPROVED: LL AUSTIN

SKETCH NOT TO SCALE