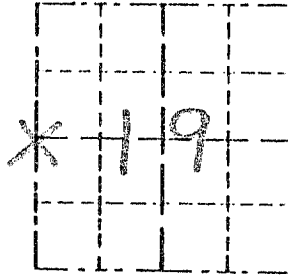


Survey Monument Record

TYPE OF MONUMENT 3/4" X 24" IRON  
BAR SET

CORNER NO. 74  
SECTION 19  
TOWN 4N  
RANGE 2W

FIELD BOOK: 97-02  
PAGE \_\_\_\_\_



LOCATION  
(Indicated by "X")

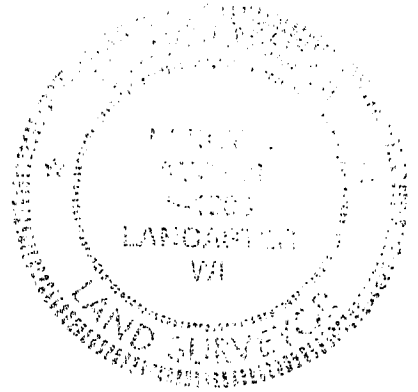
BASIS FOR MONUMENT LOCATION

(Use reverse side if necessary)

Show info such as: History of corner, with reference to Vol. and pg, dates, surveyor; exact description of monument replaced; if location computed, by taped or EDM traverse; landowner, remarks, etc.

SEAL:

NO RECORD OF CORNER FOUND SINCE ORIGINAL SURVEYS, CORNER SET AT THE RECORDED OFFSET FROM THE EAST 1/4 CORNER OF SECTION 24 T4N R3W, AND ON THE EAST LINE OF SECTION 24; VERIFIED THIS LOCATION BY EDM TRAVERSE OF THE AREA.



CERTIFIED CORRECT

*Larry J. Rust*  
Registered Land Surveyor

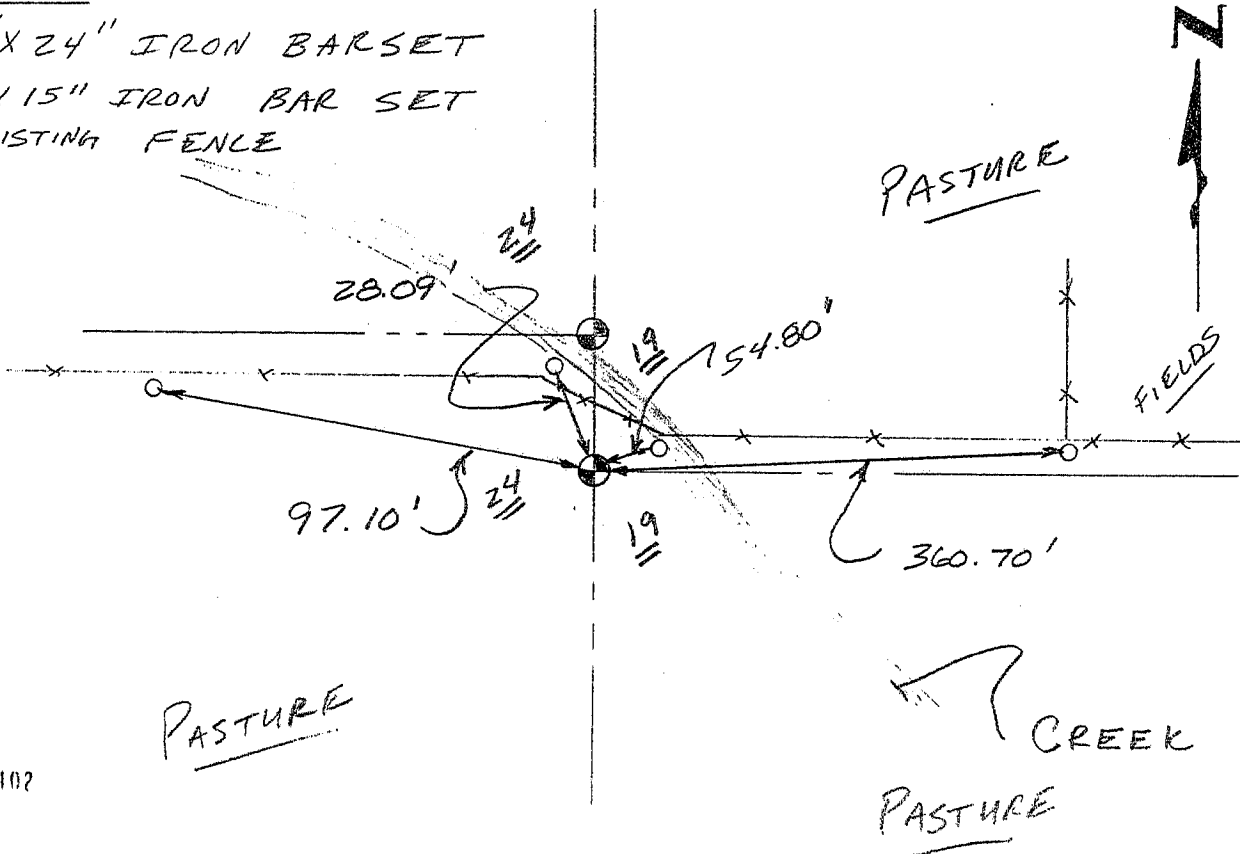
DATE: 1-12-98

TIE SKETCH

Show at least three (3) ties and monument

LEGEND

- 3/4" X 24" IRON BARSET
- 1/2" X 15" IRON BAR SET
- EXISTING FENCE

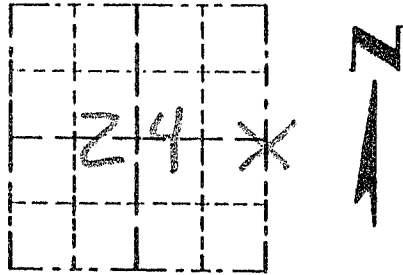


Survey Monument Record

TYPE OF MONUMENT 3/4" X 24" IRON  
BAR SET

CORNER NO. 80  
SECTION 24  
TOWN 4N  
RANGE 3W

FIELD BOOK: 97-02  
PAGE \_\_\_\_\_



LOCATION  
(Indicated by "X")

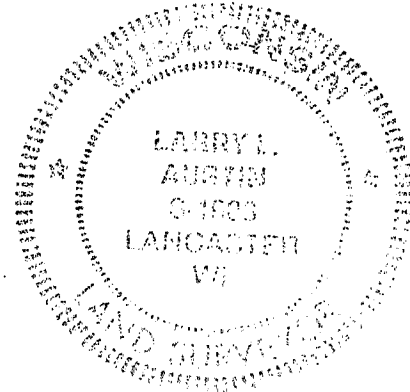
BASIS FOR MONUMENT LOCATION

(Use reverse side if necessary)

Show info such as: History of corner, with reference to Vol. and pg, dates, surveyor; exact description of monument replaced; if location computed, by taped or EDM traverse; landowner, remarks, etc.

SEAL:

CORNER SET IN 1832 BY SIBLEY. NO RECORD OF CORNER FOUND SINCE ORIGINAL SURVEY; CORNER LOCATION ESTABLISHED BY PROPORTIONATE METHODS FROM THE NE CORNER AND THE SE CORNER. VERIFIED THIS LOCATION USING EDM METHODS.



CERTIFIED CORRECT

Larry L. Austin  
Registered Land Surveyor

DATE: 1-12-98

TIE SKETCH

Show at least three (3) ties and monument

LEGEND

- 3/4" X 24" IRON BAR SET
- 1/2" X 15" IRON BAR SET
- \*\* EXISTING FENCE

