

U.S. PUBLIC LAND SURVEY MONUMENT RECORD - GRANT COUNTY, WI

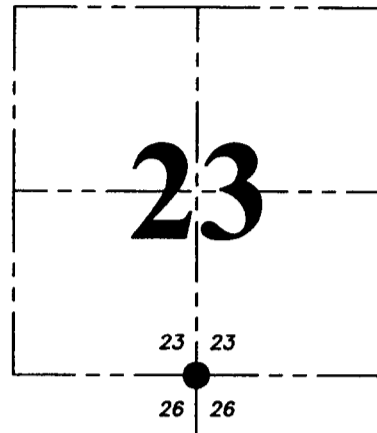
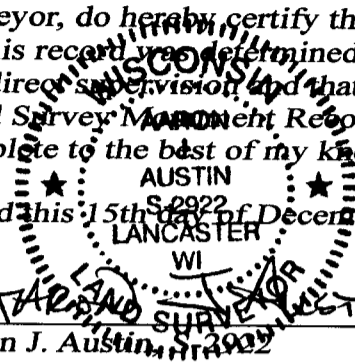
Section 23, Town 4 North Range 3 West, Town of South Lancaster

CERTIFICATE:

I, Aaron J. Austin, Wisconsin Professional Land Surveyor, do hereby certify that the corner location on this record was determined by me and/or under my direct supervision and that this U.S. Public Land Survey Monument Record is correct and complete to the best of my knowledge and belief.

Dated this 15th day of December 2015.

Aaron J. Austin
 Aaron J. Austin, Wisconsin Professional Land Surveyor
 S 2922
 LANCASTER, WI



● = CORNER LOCATION

HISTORY OF CORNER ESTABLISHMENT:

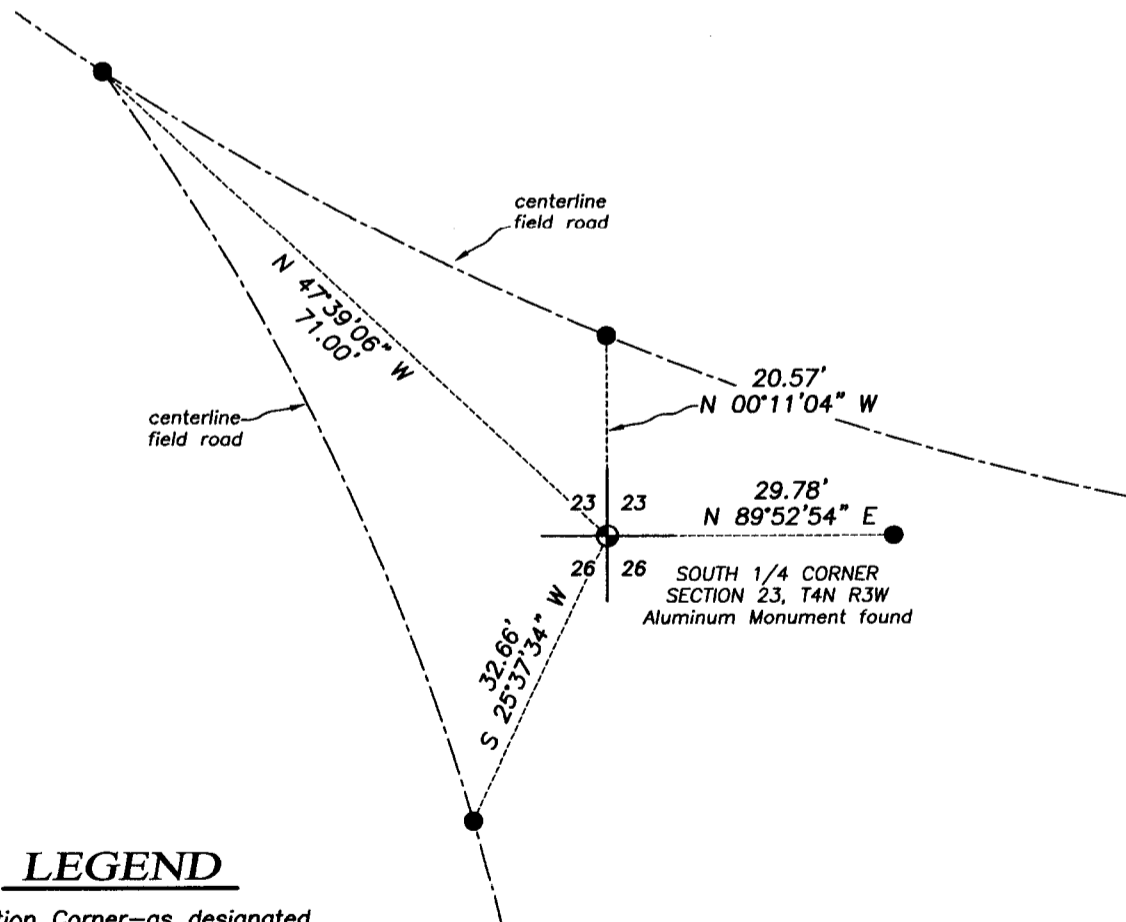
- 1833-Robert Clark set original corner.
- 2012-Jimmy Rose tied to the corner on a Survey filed in Book 32, Page 48.
- 1844-Wiltse tied to the corner on a Survey in Book A, Page 175.
- 1849-Stuntz tied to the corner on a Survey in Book B, Page 183.
- 1858-Hayden tied to the corner on a Survey filed in Book C, Page 183.
- 1996-Burbach tied to the corner on a Survey in Book Y, Page 19.

DESCRIPTION OF CORNER EVIDENCE FOUND:

I found the Monument in place and set four witness corners after I verified its location with E.D.M. and G.P.S. methods.

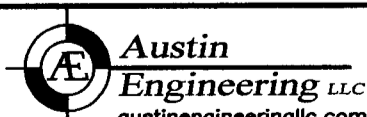
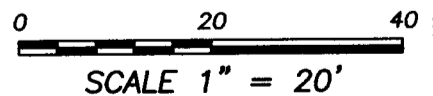
DESCRIPTION OF CORNER AND WITNESS MONUMENTS, references and accessories used to perpetuate the original or re-established location of this corner. Witnesses to corner location Shane Austin.

SKETCH:



LEGEND

- ⊕ Section Corner—as designated
- 1/2" x 12" Rebar set



4211 HWY 81 E, LANCASTER, WI 53813
 PHONE: 608-723-6363 FAX: 608-723-6702

JOB NO: 15s053
 H:\CRD\15s053
 H:\TIE\T4NR3W\84

FIELDBOOK: TDSR
 DRAWN BY: AJ AUSTIN
 CREW: SW AUSTIN