

**U.S. PUBLIC LAND SURVEY MONUMENT RECORD - GRANT COUNTY, WI**

Section 23, Town 4 North, Range 3 West, Town of South Lancaster

(a)

**NOTE:** This form is intended and designed to fulfill all requirements of Wisconsin Administrative Code. Chapter A-E 7.08, U.S. Public Land Survey Monument Record (3) (a) (b) (c) (d) (e) (f) (g) (h) (i). "An additional sheet *may* be added if necessary to conform with said requirements.

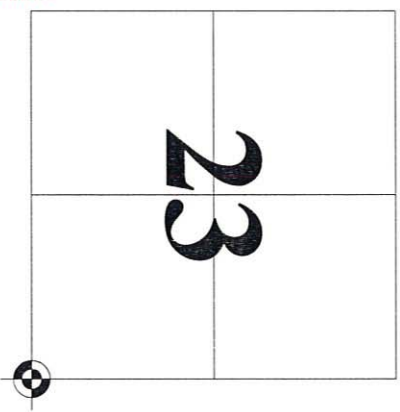
CERTIFICATE:

(i)

I, John Krebs, do hereby certify that the corner location on this record was determined by me and/or under my direct supervision and that this U.S. Public Land Survey Monument Record is correct and complete to the best of my knowledge and belief.

Dated this 4th day of April, 2012.

*John Krebs*  
 John Krebs, S-1878



HISTORY OF CORNER ESTABLISHMENT:

Monument set by Timothy J. Moore as shown on a tie sheet dated March 9, 1988. Michael S. O'Keefe, S-2743, located corner on July 6, 2011, before road construction began.

DESCRIPTION OF CORNER EVIDENCE FOUND:

Monument was removed during road construction. Replaced corner per location by Michael S. O'Keefe. Found two ties per the sheet by Timothy J. Moore, S-1830, dated March 9, 1988. Set cotton pin at Section corner, found two additional ties and set one tie as shown hereon.

(b) (f) (g) (h)

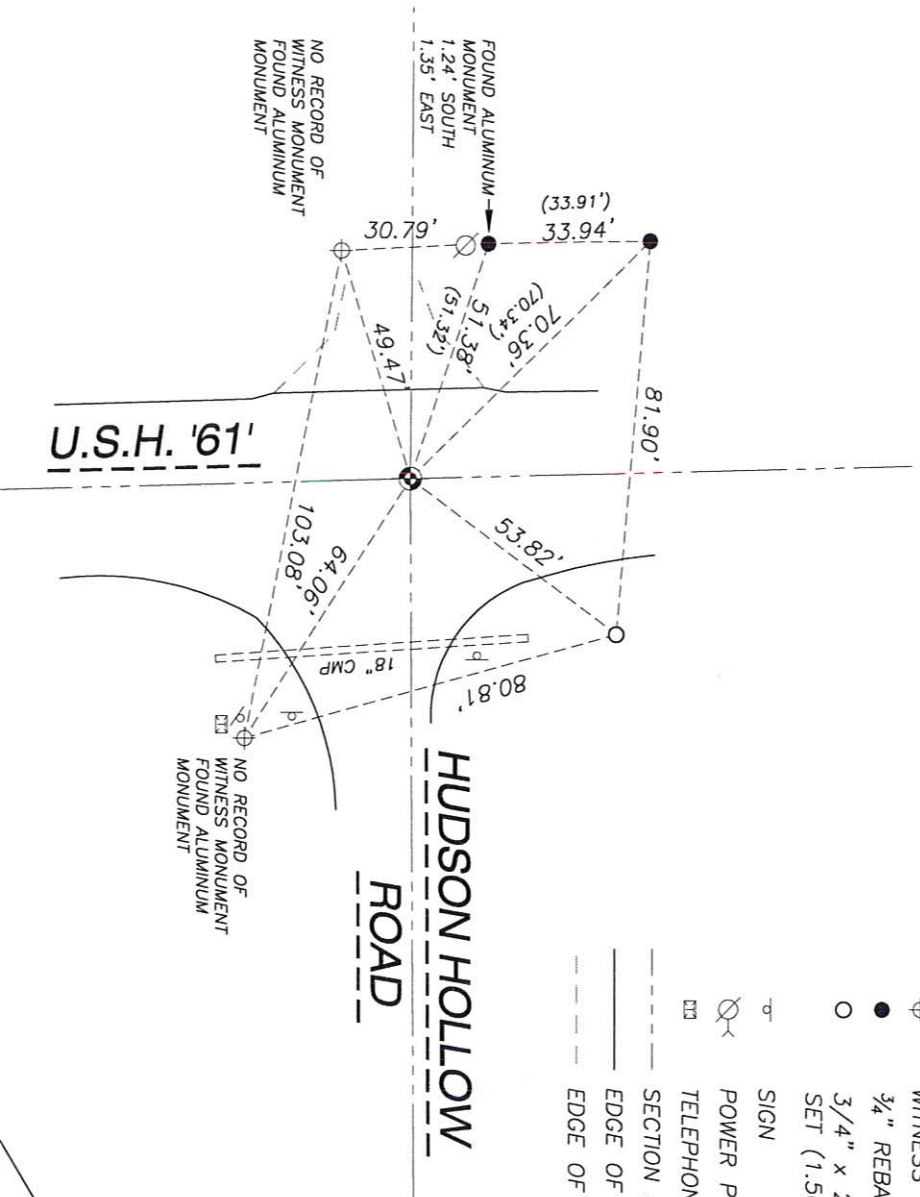
Witnesses to corner location

DESCRIPTION OF CORNER AND WITNESS MONUMENTS: references and accessories used to perpetuate the original or re-established location of this corner. (c) (d) (e)

SKETCH:

LEGEND

- GOVERNMENT CORNER
- WITNESS MONUMENT FOUND
- 3/4" REBAR FOUND
- 3/4" x 24" REBAR SET (1.50 LBS/LF)
- SIGN
- POWER POLE W/GUY
- TELEPHONE PEDESTAL
- SECTION LINE
- EDGE OF PAVEMENT
- EDGE OF GRAVEL



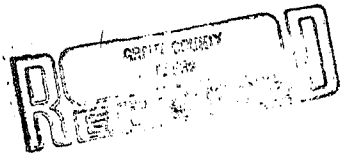
# U. S. PUBLIC LAND SURVEY MONUMENT RECORD

INSTRUCTIONS: This record shall show the location of the corner and shall include all of the following nine elements (a through i).

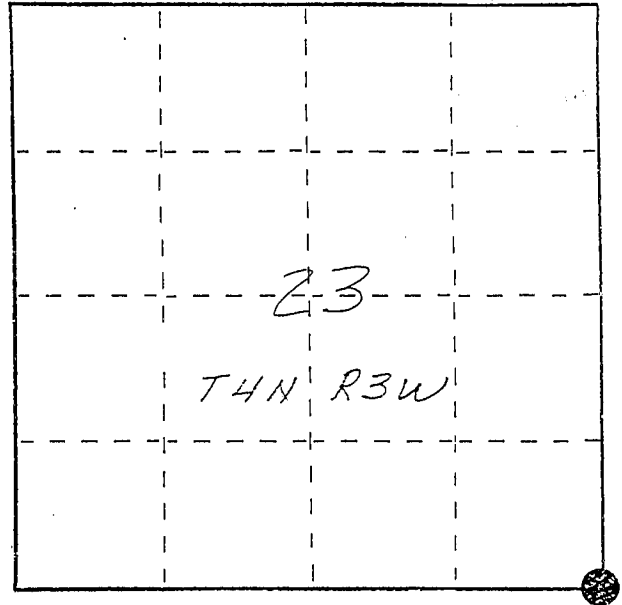
(a) Identify the corner by reference to the U.S. public land survey system.

● = Corner monument restored.

SE corner section 23  
T4N R3W of the  
4th P.M.  
Town of South Lancaster  
Grant County, Wisconsin.



APR 27 1998



(b) Describe any record evidence, monument evidence, occupational evidence, testimonial evidence or any other material evidence you considered, and whether the monument was found or placed.

Monument set by intersecting south line of section 23 with the E of U.S. hwy 61. The E of 61 was held as shown on the 1935 hwy R/W plat. The south line of section 23 was set by extending a line easterly from the reestablished SW corner of said section 23 through an ancient fence corner post at the SW-SE-SE. The established corner location fits well with other reestablished corners in the section and also occupation fences to the south and east.

Due to planned construction, Berntsen monument was not set.

(c) In the plan view drawing below, provide reference ties to at least 4 witness monuments, or, if the location is within a municipality, to at least 2 witness monuments. (Witness monuments shall be made of concrete, natural stone, iron or other equally durable material, ~~except~~ wood.) Describe witness monuments.

(d) Show a plan view drawing depicting the relevant monuments and reference ties which is sufficient in detail to enable accurate relocation of the corner monument if the corner monument is disturbed. Indicate north.

