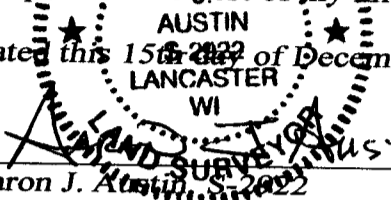


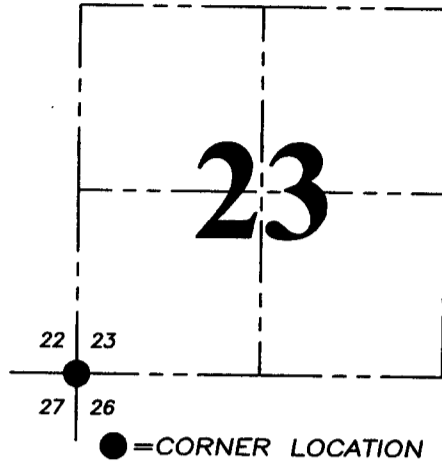
U.S. PUBLIC LAND SURVEY MONUMENT RECORD - GRANT COUNTY, WI
 Section 23, Town 4 North Range 3 West, Town of South Lancaster

CERTIFICATE:

I, Aaron J. Austin, Wisconsin Professional Land Surveyor, do hereby certify that the corner location on this record was determined by me and/or under my direct supervision and that this U.S. Public Land Survey Monument Record is correct and complete to the best of my knowledge and belief.

Dated this 15th day of December 2015.


 AUSTIN
 2022
 LANCASTER
 WI
 LAND SURVEYOR
 AARON J. AUSTIN



HISTORY OF CORNER ESTABLISHMENT:

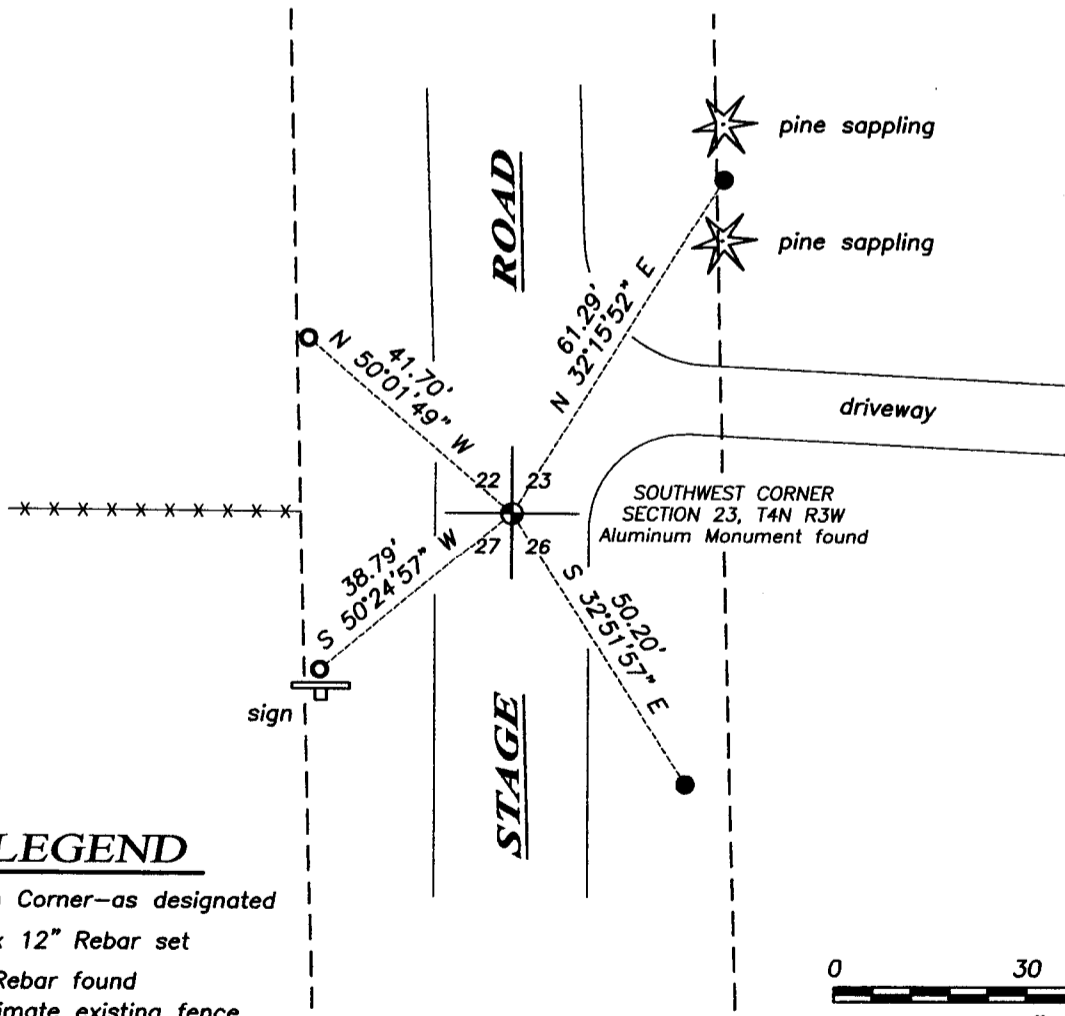
- 1833-Robert Clark set original corner
- 1844-Wiltse tied to the corner on a Survey in Book A, Page 175.
- 1849-Stuntz tied to the corner on a Survey in Book B, Page 183.
- 1988-T. Moore prepared a U.S. Public Land Survey Monument Record for this corner.
- 1996-Burbach tied to the corner on a Survey in Book Y, Page 19.

DESCRIPTION OF CORNER EVIDENCE FOUND:

I found the Monument in place as established by Timothy Moore and two witness corners. I set two new witness corners after I verified its location with E.D.M. and G.P.S. methods.

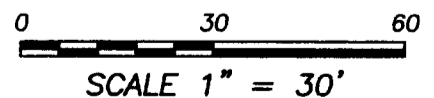
DESCRIPTION OF CORNER AND WITNESS MONUMENTS, references and accessories used to perpetuate the original or re-established location of this corner. Witnesses to corner location Shane Austin.

SKETCH:



LEGEND

- ⊕ Section Corner—as designated
- 1/2" x 12" Rebar set
- 3/4" Rebar found
- *- Approximate existing fence



Austin Engineering LLC
 austinengineeringllc.com

4211 HWY 81 E, LANCASTER, WI 53813
 PHONE: 608-723-6363 FAX: 608-723-6702

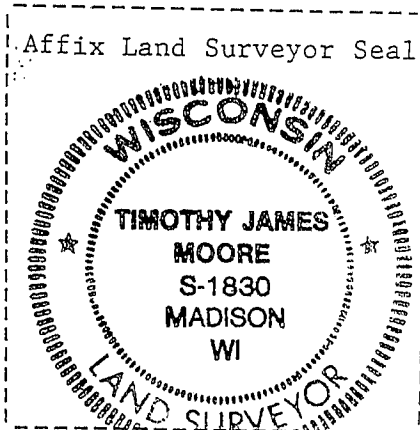
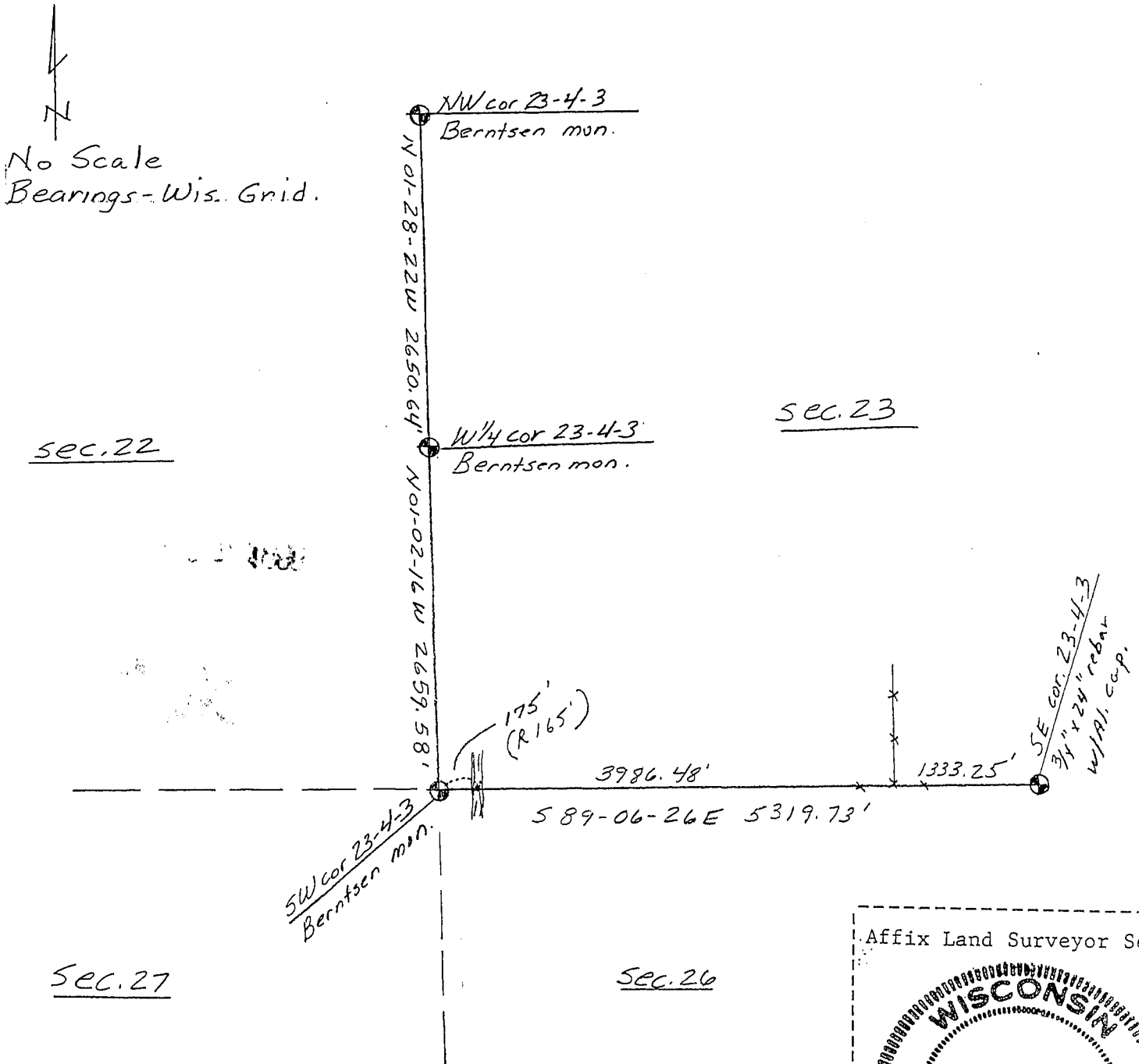
JOB NO: 15s053
 H:CRD\15s053
 H:\TIE\T4NR3W\85

FIELDBOOK: TDSR
 DRAWN BY: AJ AUSTIN
 CREW: SW AUSTIN

(e) Describe any material discrepancy between the location of the corner as restored or reestablished and the location of that corner as previously restored or reestablished by distance and direction. Show the discrepancy on the plan view drawing under (d), above. Show the distances between the corner as previously restored or reestablished and (1) the corner as restored or reestablished, and (2) to at least 2 of the witness monuments shown on the drawing in (d), above.

(f) Was the corner restored through acceptance of (1) an obliterated evidence location, or, (2) a found perpetuated location?

(g&h) Was the corner reestablished through lost corner proportionate methods? If so, show the method, including the directions and distances to other public land survey corners used as evidence or used for proportioning in determining the corner location?



(i) I, Timothy J. Moore
 (type or print name) certify that the corner location shown on this record was determined by me or under my direction and control and that this U.S. Public Land Survey Monument Record is correct and complete to the best of my knowledge and belief.

Timothy J. Moore
 Signature

3-9-83
 Date