

# GRANT COUNTY CERTIFIED LAND CORNER

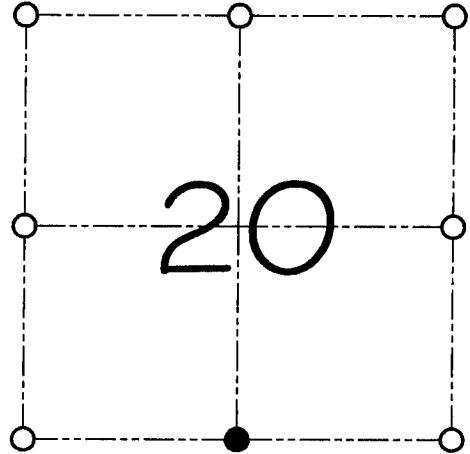
CORNER NUMBER 90

**CERTIFICATE:**

I, Larry L. Austin, do hereby certify that on the 5th day of May, 2000, I found evidence of the South 1/4 corner of Section 20, Town 4 North, Range 3 West, of the 4th Principal Meridian, and I re-established said corner according to the Wisconsin statutes as shown and described hereon.

Dated this 12th day of May, 2000

*Larry L. Austin*  
Larry L. Austin S-1903



● = CORNER LOCATION

SOUTH 1/4 CORNER OF  
SECTION 20, T 4 N R 3 W  
TOWN OF SOUTH LANCASTER

**HISTORY OF ORIGINAL CORNER ESTABLISHMENT:**

Corner was originally set in 1833 by Robert Clark.  
In 1878 Joel Barber set a Stone at this location.

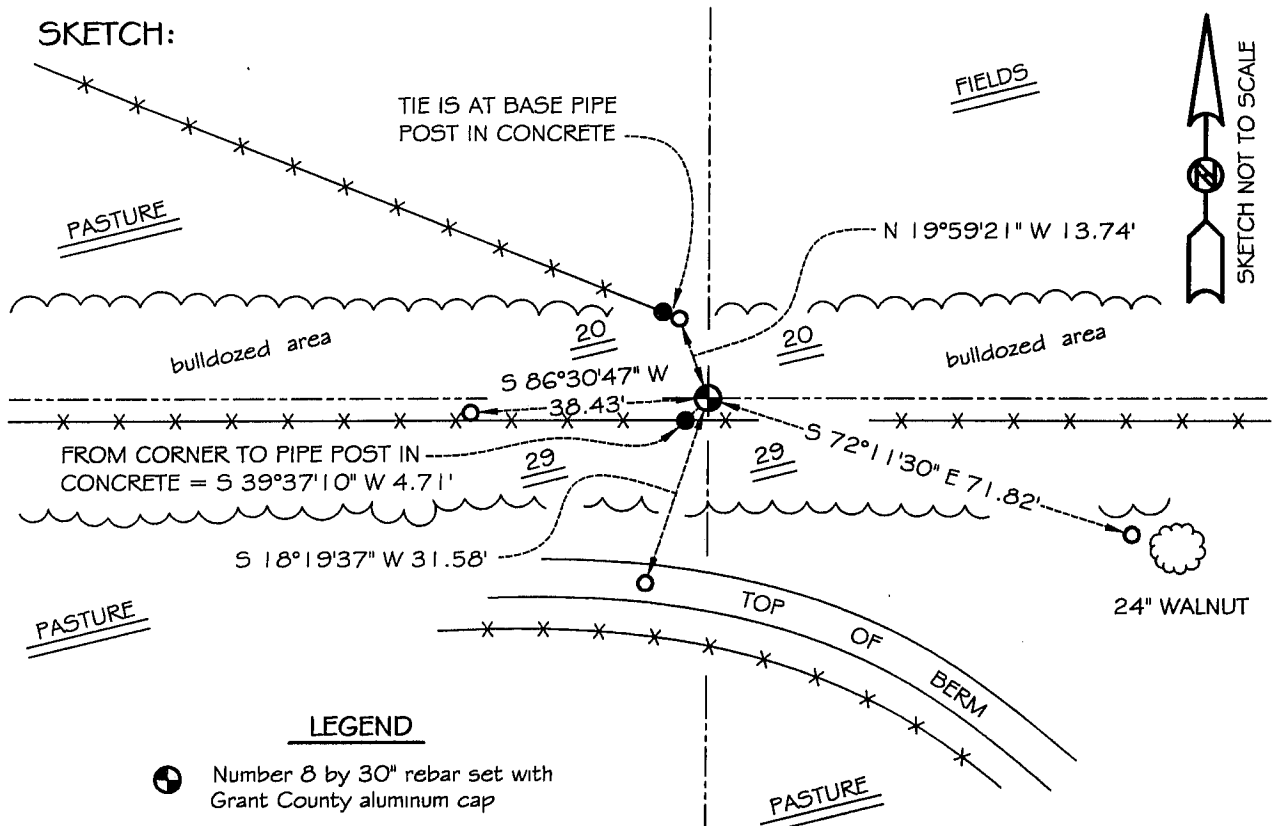
**DESCRIPTION OF CORNER EVIDENCE FOUND:**

I found no evidence to the location of the Stone. I reset the corner based on proportionate measurement to the Barber survey. Verified this location using E.D.M. & G.P.S. methods.

**DESCRIPTION OF CORNER AND WITNESS MONUMENTS, references and accessories used to perpetuate the original or re-established location of this corner**

WITNESS TO THE CORNER LOCATION: SHANE AUSTIN & SHELBY BLINDERT

**SKETCH:**



**LEGEND**

- Number 8 by 30" rebar set with Grant County aluminum cap
- Number 4 by 24" rebar set with red plastic cap
- x— Existing fence location
- 3" Pipe post in concrete

\* SEE SECTION SUMMARY FOR \*  
RELATIONSHIP TO AREA CORNERS