

GRANT COUNTY CERTIFIED LAND CORNER

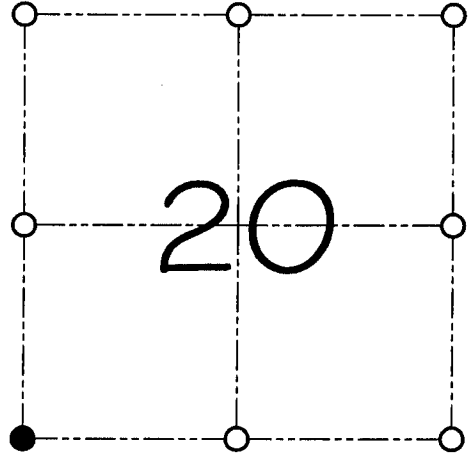
CORNER NUMBER 91

CERTIFICATE:

I, Larry L. Austin, do hereby certify that on the 5th day of May, 2000, I found evidence of the Southwest corner of Section 20, Town 4 North, Range 3 West, of the 4th Principal Meridian, and I re-established said corner according to the Wisconsin statutes as shown and described hereon.

Dated this 12th day of May 2000

Larry L. Austin
Larry L. Austin S-1903



● = CORNER LOCATION

SOUTHWEST CORNER OF SECTION 20, T 4 N R 3 W TOWN OF SOUTH LANCASTER

HISTORY OF ORIGINAL CORNER ESTABLISHMENT:

Corner was originally set in 1833 by Robert Clark.
In 1878 Joel Barber tied to the corner and found a Stone.

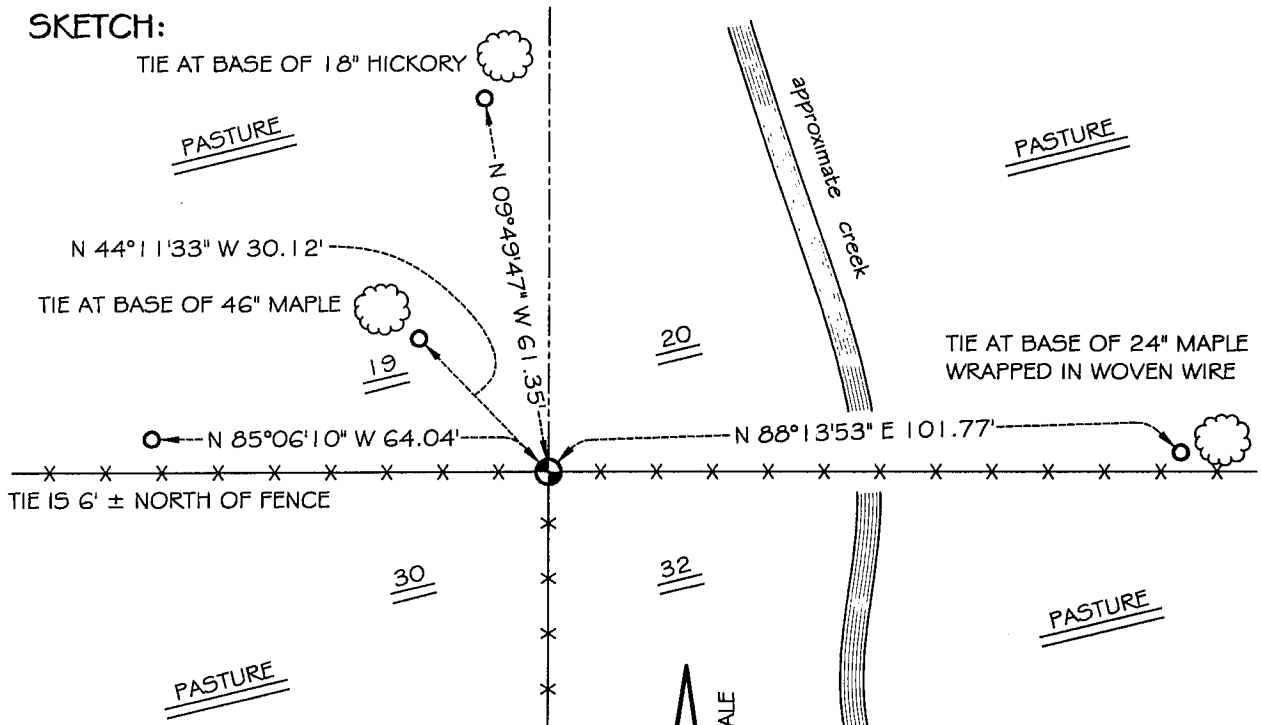
DESCRIPTION OF CORNER EVIDENCE FOUND:

I found no evidence of Barber's location of the corner. I found an existing fence corner and accepted it's location after an E.D.M. & G.P.S. traverse of the area

DESCRIPTION OF CORNER AND WITNESS MONUMENTS, references and accessories used to perpetuate the original or re-established location of this corner

WITNESS TO THE CORNER LOCATION: SHANE AUSTIN & SHELBY BLINDERT

SKETCH:



* SEE SECTION SUMMARY FOR *
RELATIONSHIP TO AREA CORNERS



LEGEND

- 1/4" Hole placed in the base of "I" beam in concrete
- Number 4 by 24" rebar set with red plastic cap
- x— Existing fence location