

GRANT COUNTY CERTIFIED LAND CORNER

CORNER NO. 55

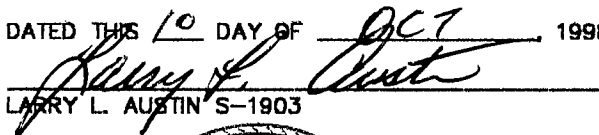
T 4 N R 3 W
TOWN OF SOUTH LANCASTER

CERTIFICATE:

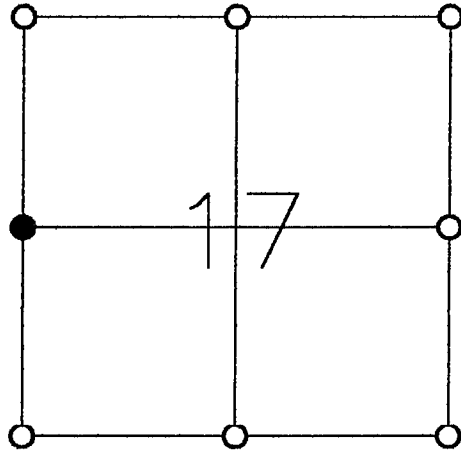
I, LARRY L. AUSTIN, DO HEREBY CERTIFY THAT ON 11 DAY OF NOVEMBER, 1998, I FOUND OCCUPATIONAL EVIDENCE OF THE WEST 1/4 CORNER OF SECTION 17, TOWN 4 NORTH, RANGE 3 WEST, OF THE FOURTH PRINCIPAL MERIDIAN, AND I RE-ESTABLISHED SAID CORNER ACCORDING TO THE WISCONSIN STATUTES AS SHOWN AND DESCRIBED HEREON.

DATED THIS 10 DAY OF OCT 1998

LARRY L. AUSTIN S-1903




SEAL



● = CORNER LOCATION

HISTORY OF ORIGINAL CORNER ESTABLISHMENT:

CORNER SET IN 1833 BY ROBERT CLARK.
NO OTHER RECORD OF THE CORNER WAS FOUND.

DESCRIPTION OF CORNER EVIDENCE FOUND:

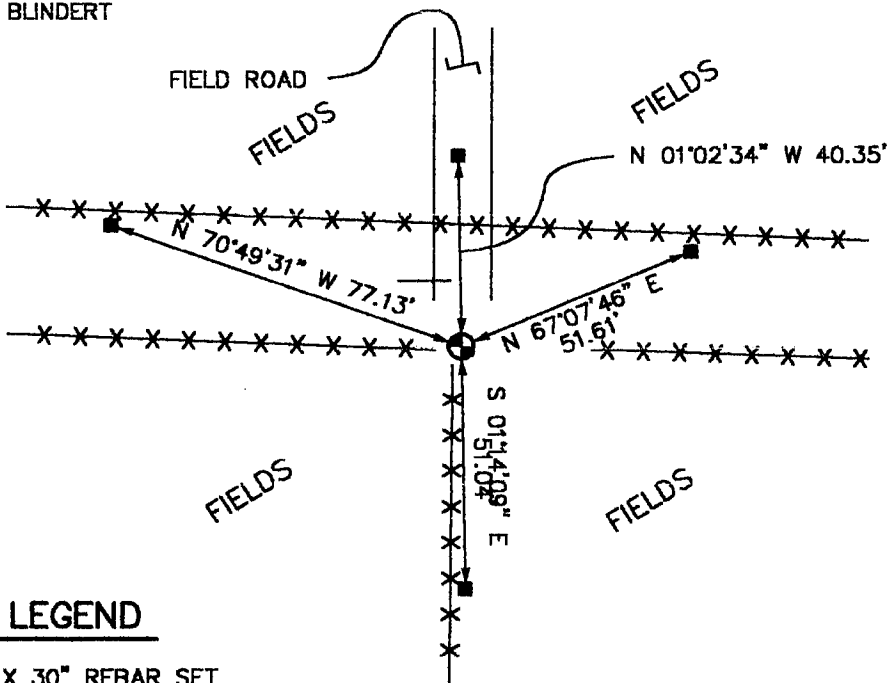
AN OCCUPIED FENCE CORNER ACCEPTED ITS
LOCATION USING E.D.M. AND G.P.S. METHODS.

DESCRIPTION OF CORNER AND WITNESS MONUMENTS, REFERENCES AND ACCESSORIES USED TO PERPETUATE THE ORIGINAL OR RE-ESTABLISHED LOCATION OF THIS CORNER:

WITNESS TO THE CORNER LOCATION:

BOBBY SEDGWICK
SHELBY BLINDERT

SKETCH:



LEGEND

- NO. 8 X 30" REBAR SET WITH GRANT COUNTY CAP
- NO. 4 X 16" REBAR SET

