

U.S. PUBLIC LAND SURVEY MONUMENT RECORD - GRANT COUNTY, WI

Section 19, Town 4 North Range 3 West, Town of South Lancaster

CERTIFICATE:

I, Aaron J. Austin, do hereby certify that the corner location on this record was determined by me and/or under my direct supervision and that this U.S. Public Land Survey Monument Record is correct and complete to the best of my knowledge and belief.

Dated this 25th day of October, 2013.

Aaron J. Austin
 Aaron J. Austin, S-2922



● = CORNER LOCATION

HISTORY OF CORNER ESTABLISHMENT:

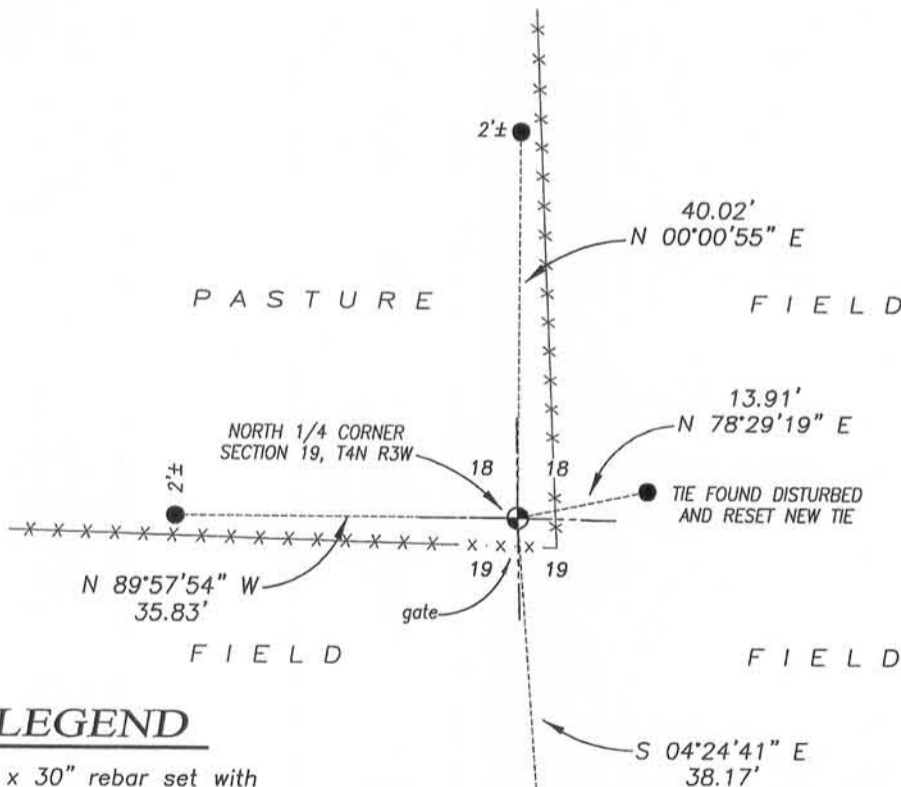
- 1833-Clark set original corner.
- 1844-Wiltse tied to the corner on a survey filed in Book A, Page 235.
- 1844-Wiltse tied to the corner on a survey filed in Book A, Page 165.
- 1844-Wiltse tied to the corner on a survey filed in Book A, Page 198.
- 2004-L. Austin the reset corner on a Survey filed in Book 16, Page 16.
- 2006-L. Austin tied to this corner on a Survey filed in Book 20, Page 50.
- 2007-L. Austin tied to this corner on a Survey filed in Book 22, Page 19.
- 2008-L. Austin tied to this corner on a Survey filed in Book 24, Page 26.

DESCRIPTION OF CORNER EVIDENCE FOUND:

Larry Austin prepared a U.S. Public Land Survey Monument Record for the corner in 2004. It appears the monument was removed with a fence line replacement. I was also unable to recover any reference monuments for this corner. I reset the corner by measuring to area monuments set by Larry Austin on a Survey filed in Book 22, Page 19. I verified its location by G.P.S. methods.

DESCRIPTION OF CORNER AND WITNESS MONUMENTS, references and accessories used to perpetuate the original or re-established location of this corner. Witnesses to corner location Shane Austin.

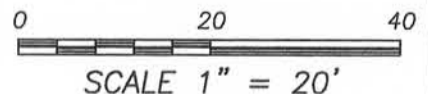
SKETCH:



Bearings referenced to the Grant County Coordinate System (2011 adjustment) which was determined by G.P.S. observation.

LEGEND

- No. 8 x 30" rebar set with Grant County Aluminum Cap
- Number 6 x 18" Rebar set with yellow plastic cap
- x-x- Approximate existing fence



Austin Engineering LLC
 austinengineeringllc.com

4211 HWY 81 E, LANCASTER, WI 53813
 PHONE: 608-723-6363 FAX: 608-723-6702

JOB NO: 13s164
 G:\13s164
 H:\TIE\T4NR3W\72(A)

FIELDBOOK: TDSR
 DRAWN BY: AJ AUSTIN
 CREW: SW AUSTIN

72(A)

DEC 27 2013

U.S. PUBLIC LAND SURVEY MONUMENT RECORD - GRANT COUNTY, WI

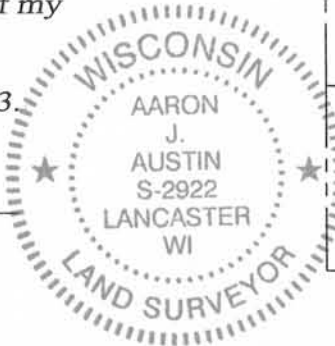
Section 19, Town 4 North Range 3 West, Town of South Lancaster

CERTIFICATE:

I, Aaron J. Austin, do hereby certify that the corner location on this record was determined by me and/or under my direct supervision and that this U.S. Public Land Survey Monument Record is correct and complete to the best of my knowledge and belief.

Dated this 25th day of October, 2013

Aaron J. Austin
 Aaron J. Austin, S-2922



● = CORNER LOCATION

HISTORY OF CORNER ESTABLISHMENT:

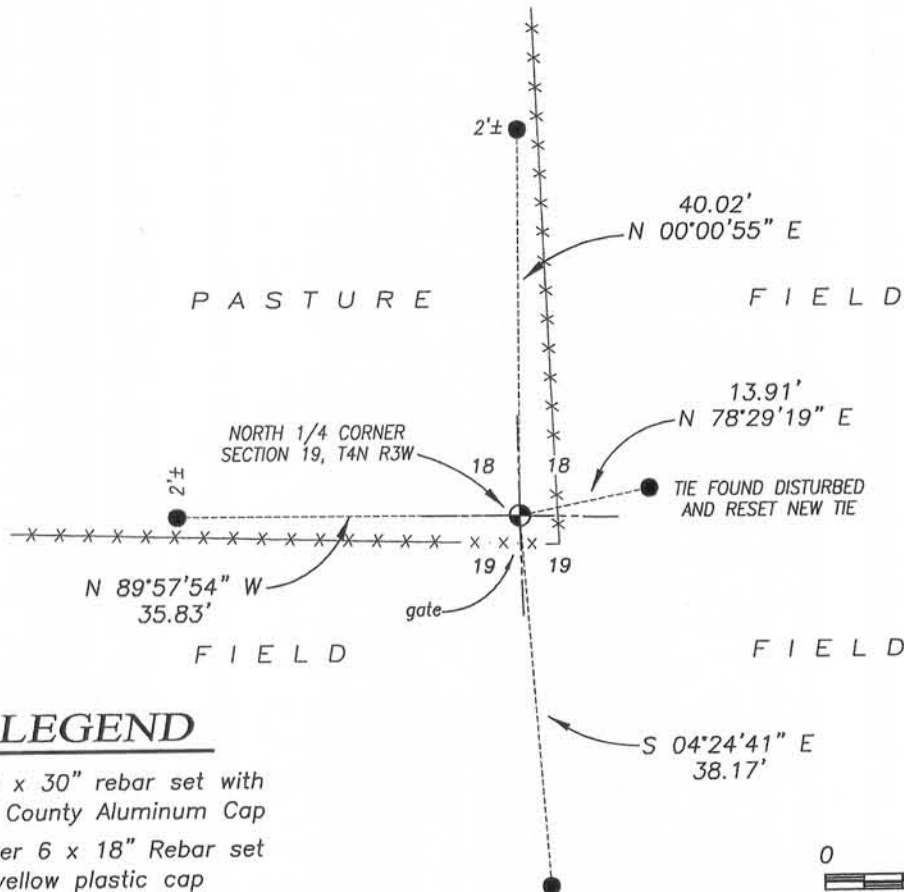
- 1833-Clark set original corner.
- 1844-Wiltse tied to the corner on a survey filed in Book A, Page 235.
- 1844-Wiltse tied to the corner on a survey filed in Book A, Page 165.
- 1844-Wiltse tied to the corner on a survey filed in Book A, Page 198.
- 2004-L. Austin the reset corner on a Survey filed in Book 16, Page 16.
- 2006-L. Austin tied to this corner on a Survey filed in Book 20, Page 50.
- 2007-L. Austin tied to this corner on a Survey filed in Book 22, Page 19.
- 2008-L. Austin tied to this corner on a Survey filed in Book 24, Page 26.

DESCRIPTION OF CORNER EVIDENCE FOUND:

Larry Austin prepared a U.S. Public Land Survey Monument Record for the corner in 2004. It appears the monument was removed with a fence line replacement. I was also unable to recover any reference monuments for this corner. I reset the corner by measuring to area monuments set by Larry Austin on a Survey filed in Book 22, Page 19. I verified its location by G.P.S. methods.

DESCRIPTION OF CORNER AND WITNESS MONUMENTS, references and accessories used to perpetuate the original or re-established location of this corner. Witnesses to corner location Shane Austin.

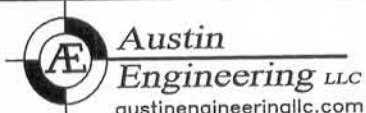
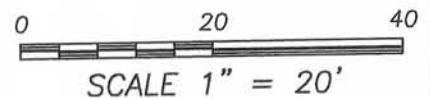
SKETCH:



Bearings referenced to the Grant County Coordinate System (2011 adjustment) which was determined by G.P.S. observation.

LEGEND

- No. 8 x 30" rebar set with Grant County Aluminum Cap
- Number 6 x 18" Rebar set with yellow plastic cap
- x-x- Approximate existing fence



4211 HWY 81 E, LANCASTER, WI 53813
 PHONE: 608-723-6363 FAX: 608-723-6702

JOB NO: 13s164
 G:\13s164
 H:\TIE\T4NR3W\72(A)

FIELDBOOK: TDSR
 DRAWN BY: AJ AUSTIN
 CREW: SW AUSTIN

72(A)

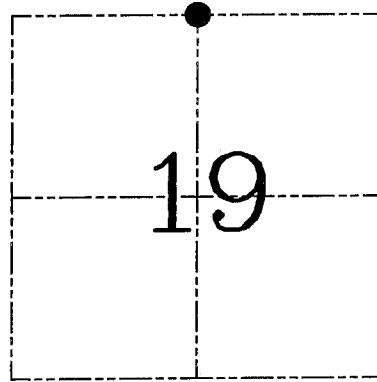
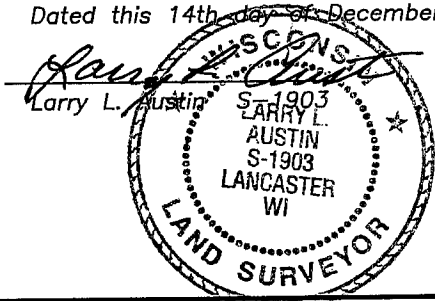
U.S. PUBLIC LAND SURVEY MONUMENT RECORD – GRANT COUNTY, WI

Section 19, Town 4 North Range 3 West, Town of South Lancaster

CERTIFICATE

I, Larry L. Austin, do hereby certify that the corner location on this record was determined by me and/or under my direct supervision and that this U.S. public land survey monument record is correct and complete to the best of my knowledge and belief.

Dated this 14th day of December, 2004



● = CORNER LOCATION

HISTORY OF CORNER ESTABLISHMENT

Corner was originally set in 1833 by Clark. Wiltse tied to the corner in 1844 with no mention of monument. No other record of the corner was found.

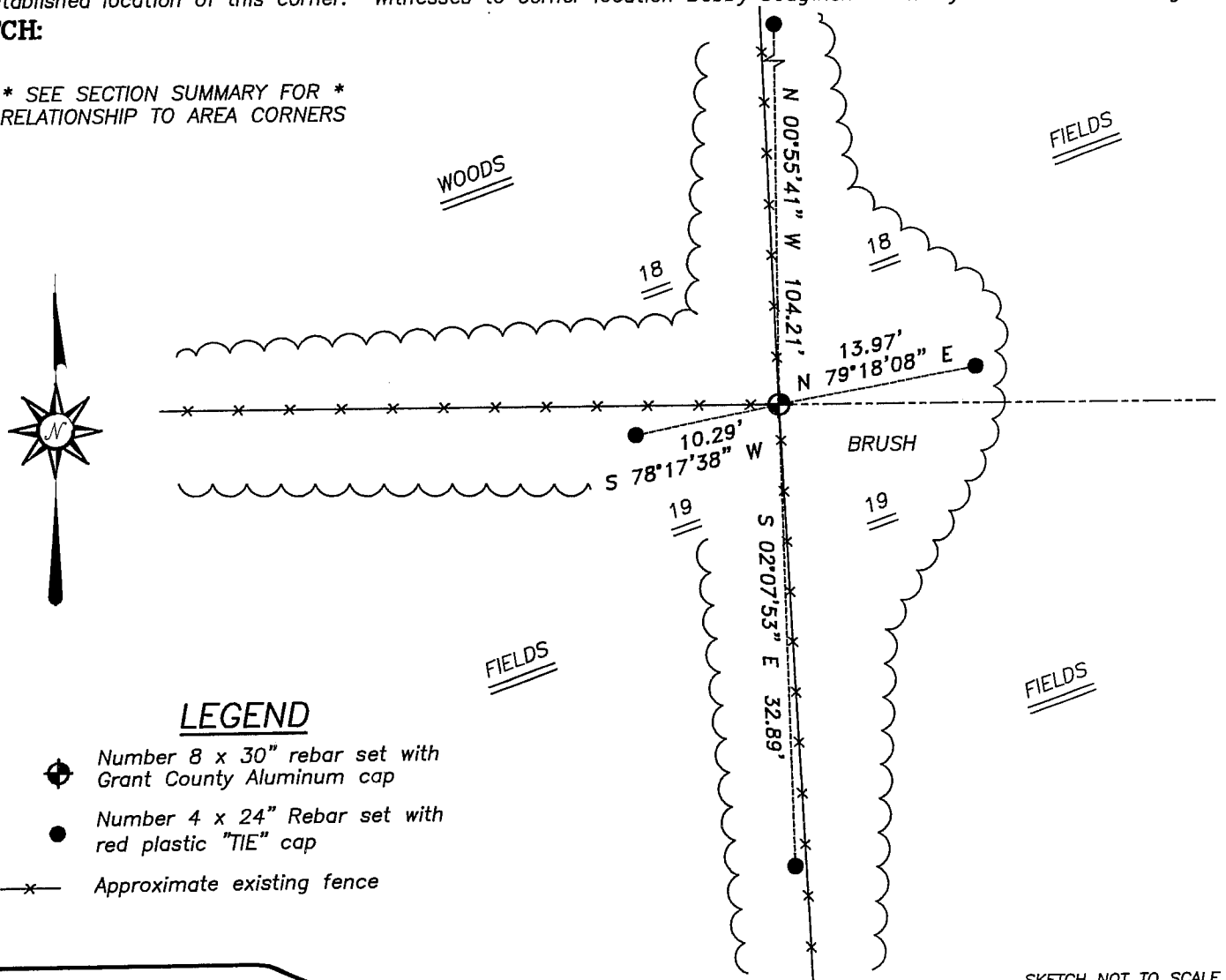
DESCRIPTION OF CORNER EVIDENCE FOUND

I found and accepted an occupied fence intersection at this location. Verified this location using EDM & GPS methods.

DESCRIPTION OF CORNER AND WITNESS MONUMENTS, references and accessories used to perpetuate the original or re-established location of this corner. Witnesses to corner location Bobby Sedgwick & Shelby Blindert & Brad Digman

SKETCH:

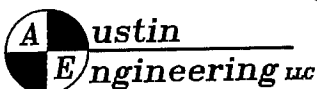
* SEE SECTION SUMMARY FOR *
RELATIONSHIP TO AREA CORNERS



LEGEND

- Number 8 x 30" rebar set with Grant County Aluminum cap
- Number 4 x 24" Rebar set with red plastic "TIE" cap
- x- Approximate existing fence

SKETCH NOT TO SCALE



4211 HWY 81 E, LANCASTER, WI 53813
PHONE 608-723-6363 FAX 608-723-6702

JOB NUMBER 04S249
FIELDBOOK: TSDR, 2417
G:\T4NR3W\17
H:\TIE\T4NR3W\72

DRAWN BY: SW AUSTIN
APPROVED: LL AUSTIN