

# GRANT COUNTY CERTIFIED LAND CORNER

CORNER NO. 56

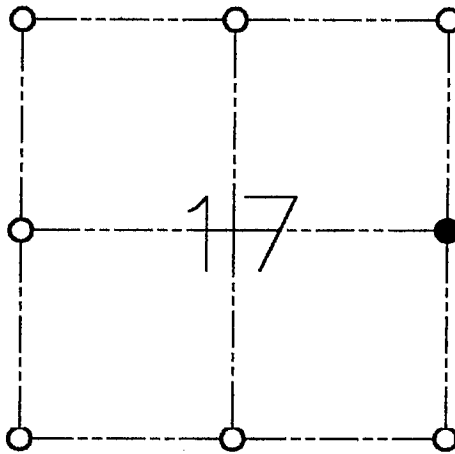
**CERTIFICATE:**

I, LARRY L. AUSTIN, DO HEREBY CERTIFY THAT ON 11 DAY OF NOVEMBER, 1998, I FOUND OCCUPATIONAL EVIDENCE OF THE EAST 1/4 CORNER OF SECTION 17, TOWN 4 NORTH, RANGE 3 WEST OF THE FOURTH PRINCIPAL MERIDIAN, AND I RE-ESTABLISHED SAID CORNER ACCORDING TO THE WISCONSIN STATUTES AS SHOWN AND DESCRIBED HEREON.

DATED THIS 10 DAY OF OCT 1998

*Larry L. Austin*  
LARRY L. AUSTIN S-1903

T 4 N R 3 W  
TOWN OF SOUTH LANCASTER



● = CORNER LOCATION



SEAL

**HISTORY OF ORIGINAL CORNER ESTABLISHMENT:**

CORNER SET IN 1833 BY ROBERT CLARK.  
HOMER RALPH TIED TO CORNER (NO MONUMENT).

**DESCRIPTION OF CORNER EVIDENCE FOUND:**

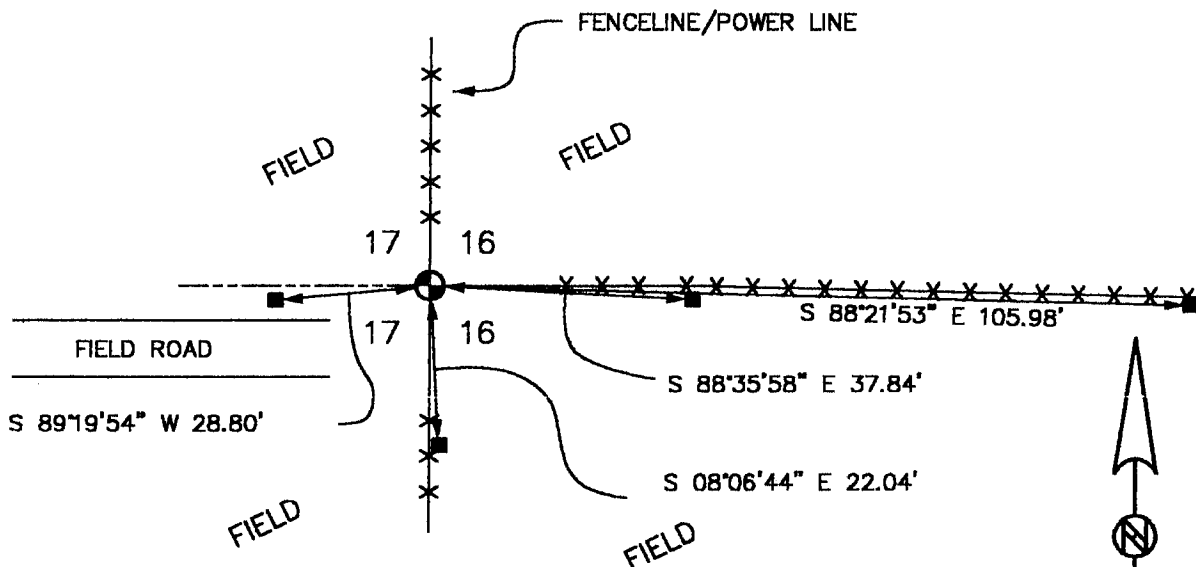
A PIPE POST AT AN OCCUPIED FENCE CORNER. VERIFIED  
LOCATION USING G.P.S. AND E.D.M. METHODS.

**DESCRIPTION OF CORNER AND WITNESS MONUMENTS, REFERENCES AND ACCESSORIES USED TO PERPETUATE THE ORIGINAL OR RE-ESTABLISHED LOCATION OF THIS CORNER:**

**WITNESS TO THE CORNER LOCATION:**

BOBBY SEDGWICK  
SHELBY BLINDERT

**SKETCH:**



**LEGEND**

- PIPE POST IN CONCRETE FOUND
- NO. 4 X 16" REBAR SET

NOT TO SCALE

C:\EPSA\PROGRAM\TIE\T4NR3W\17E