

GRANT COUNTY CERTIFIED LAND CORNER

CORNER NO. 70

CERTIFICATE:

I, LARRY L. AUSTIN, DO HEREBY CERTIFY THAT ON 11 DAY OF NOVEMBER, 1998, I FOUND OCCUPATIONAL EVIDENCE OF THE SOUTH 1/4 CORNER OF SECTION 17, TOWN 4 NORTH, RANGE 3 WEST OF THE FOURTH PRINCIPAL MERIDIAN, AND I RE-ESTABLISHED SAID CORNER ACCORDING TO THE WISCONSIN STATUTES AS SHOWN AND DESCRIBED HEREON.

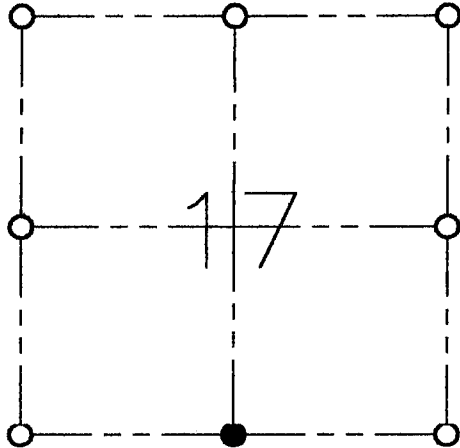
DATED THIS 10 DAY OF Oct, 1998

Larry L. Austin
LARRY L. AUSTIN S-1903



SEAL

T 4 N R 3 W
TOWN OF SOUTH LANCASTER



● = CORNER LOCATION

HISTORY OF ORIGINAL CORNER ESTABLISHMENT:

CORNER SET IN 1833 BY ROBERT CLARK.
NO OTHER RECORD OF CORNER FOUND.

DESCRIPTION OF CORNER EVIDENCE FOUND:

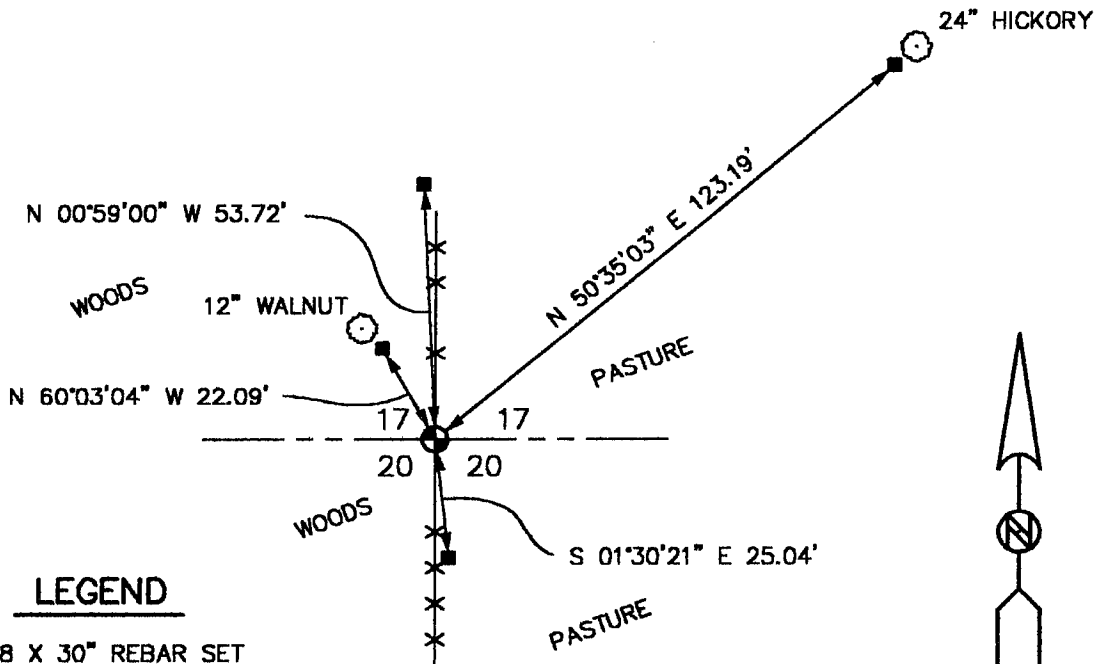
CORNER SET IN NORTH/SOUTH FENCE AND ONLINE WITH THE SOUTHEAST AND AN OCCUPIED 40 CORNER TO THE WEST VERIFIED LOCATION USING G.P.S. AND E.D.M. METHODS.

DESCRIPTION OF CORNER AND WITNESS MONUMENTS, REFERENCES AND ACCESSORIES USED TO PERPETUATE THE ORIGINAL OR RE-ESTABLISHED LOCATION OF THIS CORNER:

WITNESS TO THE CORNER LOCATION:

BOBBY SEDGWICK
SHELBY BLINDERT

SKETCH:



LEGEND

- NO. 8 X 30" REBAR SET WITH GRANT COUNTY CAP
- NO. 4 X 16" REBAR SET

C:\EPSA\PROGRAM\TIE\T4NR3W\17S