

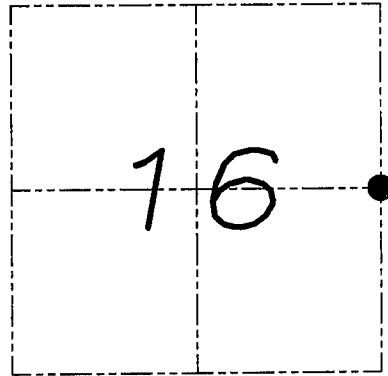
# U.S. PUBLIC LAND SURVEY MONUMENT RECORD

Section 16, Town 4 North Range 3 West, Town of South Lancaster, Grant County, Wisconsin

## CERTIFICATE

I, Larry L. Austin, do hereby certify that the corner location on this record was determined by me and/or under my direct supervision and that this U.S. public land survey monument record is correct and complete to the best of my knowledge and belief.

*Larry L. Austin*  
 Larry L. Austin, Land Surveyor  
 S-51293  
 LANCASTER  
 WI  
 4.10.08  
 date



● = CORNER LOCATION

## HISTORY OF CORNER

Corner was originally set in 1833 by Clark. No other record of the corner was found.

## CORNER EVIDENCE FOUND

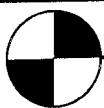
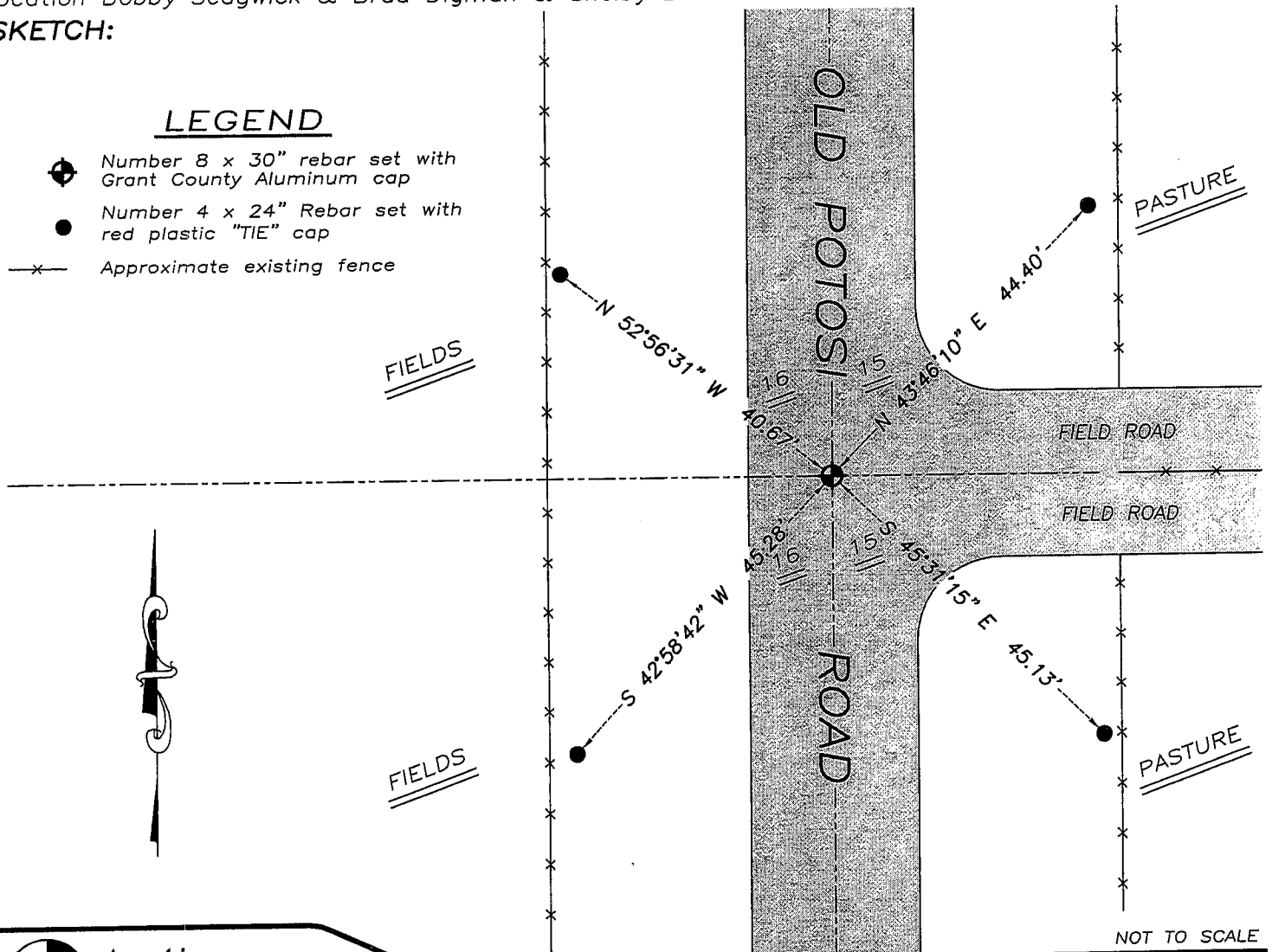
I found and accepted an occupied location after an EDM & GPS traverse of the area.

DESCRIPTION OF CORNER AND WITNESS MONUMENTS, references and accessories used to perpetuate the original or re-established location of this corner. Witnesses to monument location Bobby Sedgwick & Brad Digman & Shelby Blindert

## SKETCH:

### LEGEND

- Number 8 x 30" rebar set with Grant County Aluminum cap
- Number 4 x 24" Rebar set with red plastic "TIE" cap
- x— Approximate existing fence



**Austin Engineering LLC**

4211 HWY 81 E, LANCASTER, WI 53813  
 PHONE 608-723-6363 FAX 608-723-6702

JOB NUMBER 08S023  
 FIELDBOOK: TDSR, 2707  
 G:\T4NR3W\17  
 H:\TIE\T4NR3W\57

DRAWN BY: SW AUSTIN  
 APPROVED: LL AUSTIN