

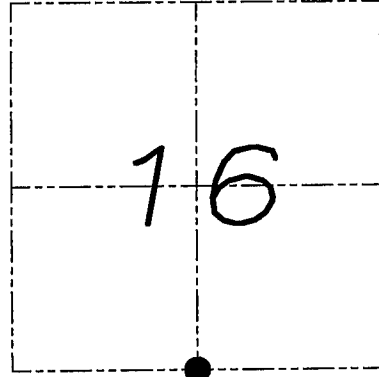
U.S. PUBLIC LAND SURVEY MONUMENT RECORD

Section 16, Town 4 North Range 3 West, Town of South Lancaster, Grant County, Wisconsin

CERTIFICATE

I, Larry L. Austin, do hereby certify that the corner location on this record was determined by me and/or under my direct supervision and that this U.S. public land survey monument record is correct and complete to the best of my knowledge and belief.

Larry L. Austin
 Larry L. Austin, LAND SURVEYOR, WI
 4.10.08 date



● = CORNER LOCATION

HISTORY OF CORNER

Corner was originally set in 1833 by Clark. No recent record of the corner was found.

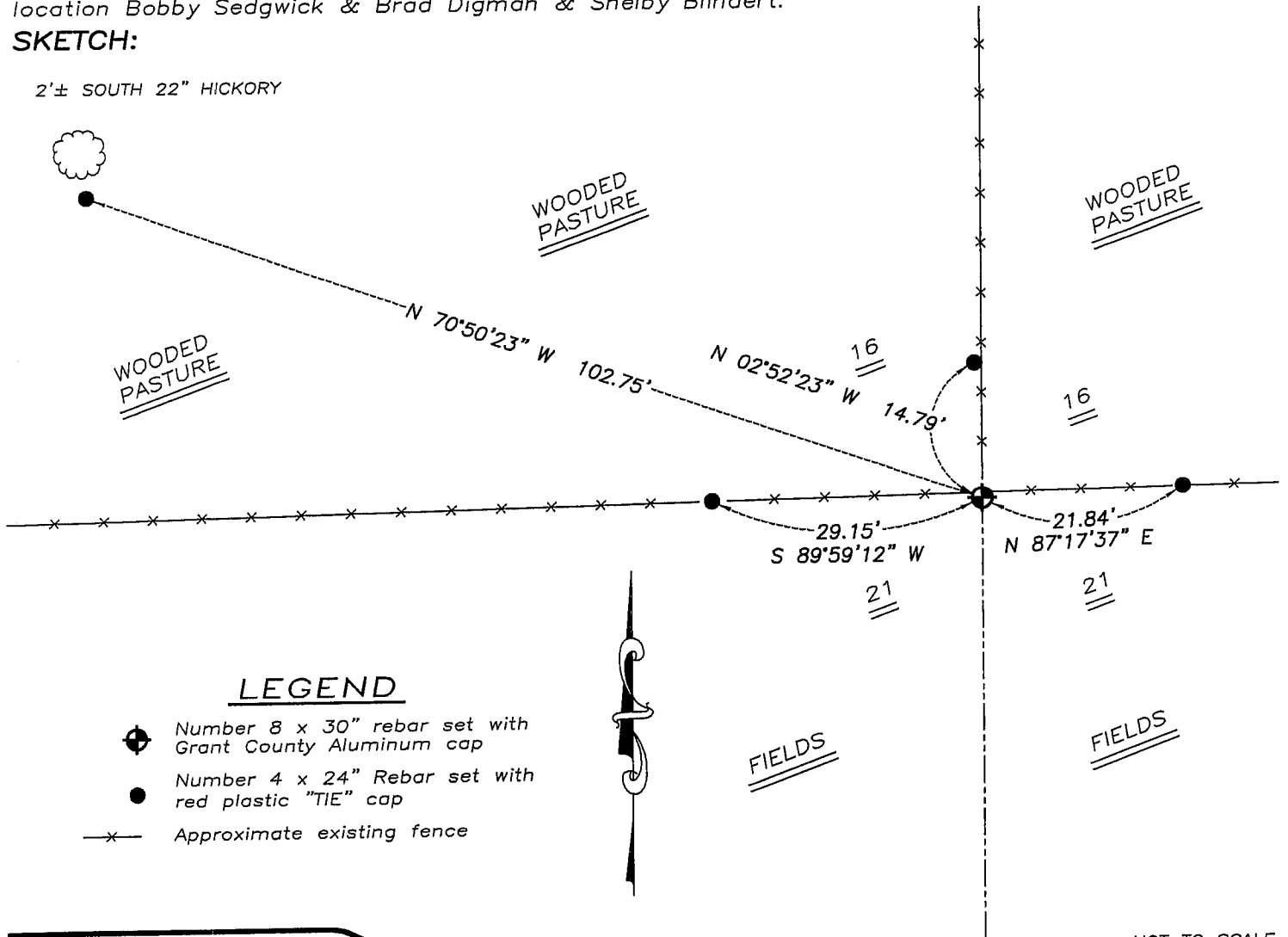
CORNER EVIDENCE FOUND

I found and accepted an occupied location after an EDM & GPS traverse of the area.

DESCRIPTION OF CORNER AND WITNESS MONUMENTS, references and accessories used to perpetuate the original or re-established location of this corner. Witnesses to monument location Bobby Sedgwick & Brad Digman & Shelby Blindert.

SKETCH:

2'± SOUTH 22" HICKORY



LEGEND

- ⊕ Number 8 x 30" rebar set with Grant County Aluminum cap
- Number 4 x 24" Rebar set with red plastic "TIE" cap
- x- Approximate existing fence

NOT TO SCALE



Austin Engineering LLC

4211 HWY 81 E, LANCASTER, WI 53813
 PHONE 608-723-6363 FAX 608-723-6702

JOB NUMBER 08S023
 FIELDBOOK: TDSR, 2707
 G:\T4NR3W\17
 H:\TIE\T4NR3W\68

DRAWN BY: SW AUSTIN
 APPROVED: LL AUSTIN

68