

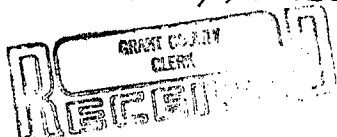
U. S. PUBLIC LAND SURVEY MONUMENT RECORD

INSTRUCTIONS: This record shall show the location of the corner and shall include all of the following nine elements (a through i).

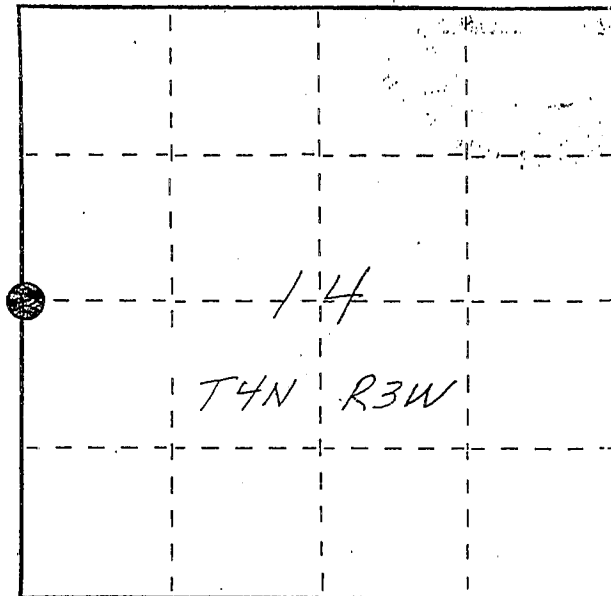
(a) Identify the corner by reference to the U.S. public land survey system.

● = Corner monument restored.

W 1/4 corner section 14
 T4N R3W of the
 4th P.M.
 Town of South Lancaster
 Grant County, Wisconsin.



APR 27 1988

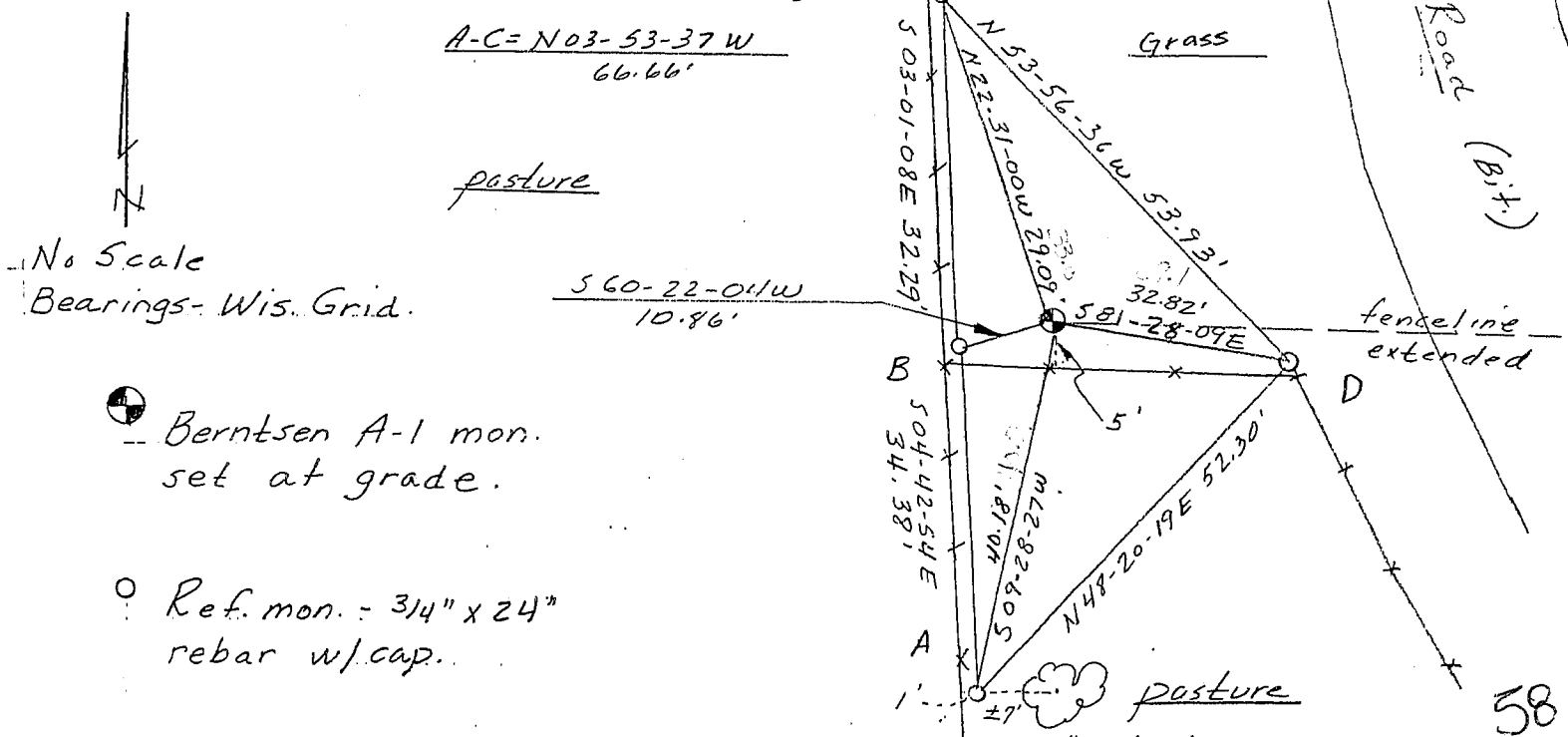


(b) Describe any record evidence, monument evidence, occupational evidence, testimonial evidence or any other material evidence you considered, and whether the monument was found or placed.

Monument set on line between reestablished NW corner and SW corner of section 14 and at the intersection with fence line extended from the east. This location fits well with other reestablished corners of the section. Some remains of an ancient fence running east-west were found about 45' southerly of corner and the distance measured to the creek to south was 264'. Recorded dist. is 231'. Chose to hold existing evidence because it fit better.

(c) In the plan view drawing below, provide reference ties to at least 4 witness monuments, or, if the location is within a municipality, to at least 2 witness monuments. (Witness monuments shall be made of concrete, natural stone, iron or other equally durable material, ~~except~~ overall wood.) Describe witness monuments.

(d) Show a plan view drawing depicting the relevant monuments and reference ties which is sufficient in detail to enable accurate relocation of the corner monument if the corner monument is disturbed. Indicate north.



● Berntsen A-1 mon. set at grade.

○ Ref. mon. - 3/4" x 24" rebar w/cap.

