

U.S. PUBLIC LAND SURVEY MONUMENT RECORD - GRANT COUNTY, WI

Section 23, Town 4 North, Range 3 West, Town of South Lancaster

(a)

NOTE: This form is intended and designed to fulfill all requirements of Wisconsin Administrative Code, Chapter A-E 7.08, U.S. Public Land Survey Monument Record (3) (a) (b) (c) (d) (e) (f) (g) (h) (i). "An additional sheet may be added if necessary to conform with said requirements."

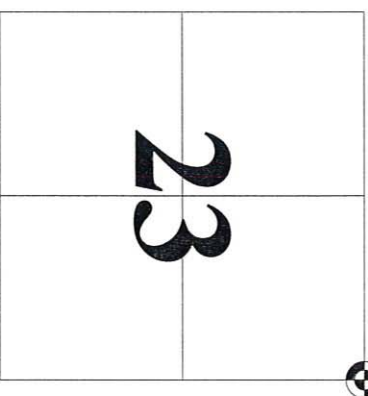
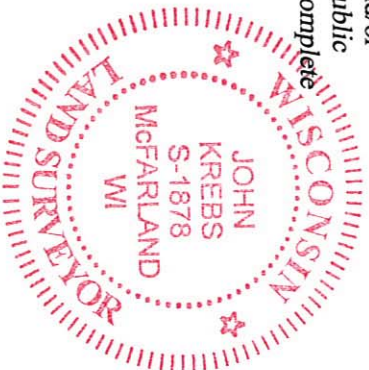
CERTIFICATE:

(i)

I, John Krebs, do hereby certify that the corner location on this record was determined by me and/or under my direct supervision and that this U.S. Public Land Survey Monument Record is correct and complete to the best of my knowledge and belief.

Dated this 4th day of April, 2012.

John Krebs
 John Krebs, S-1878



CORNER LOCATION

HISTORY OF CORNER ESTABLISHMENT:

Homer Ralph did a survey in 1968 that tied to the section corner. Dave A. Davis did a survey in 1981 showing a RR Spike at the Section corner. Timothy J. Moore set a 3/4" rebar with aluminum cap at the Section corner. Michael S. O'Keefe, S-2743, located corner on July 6, 2011, before road construction began.

DESCRIPTION OF CORNER EVIDENCE FOUND:

(b) (f) (g) (h)

Found aluminum monument in monument box and 2 ties of record on a tie sheet by Timothy J. Moore, S-1830, dated March 9, 1988. Found two additional ties and set two additional ties as shown.

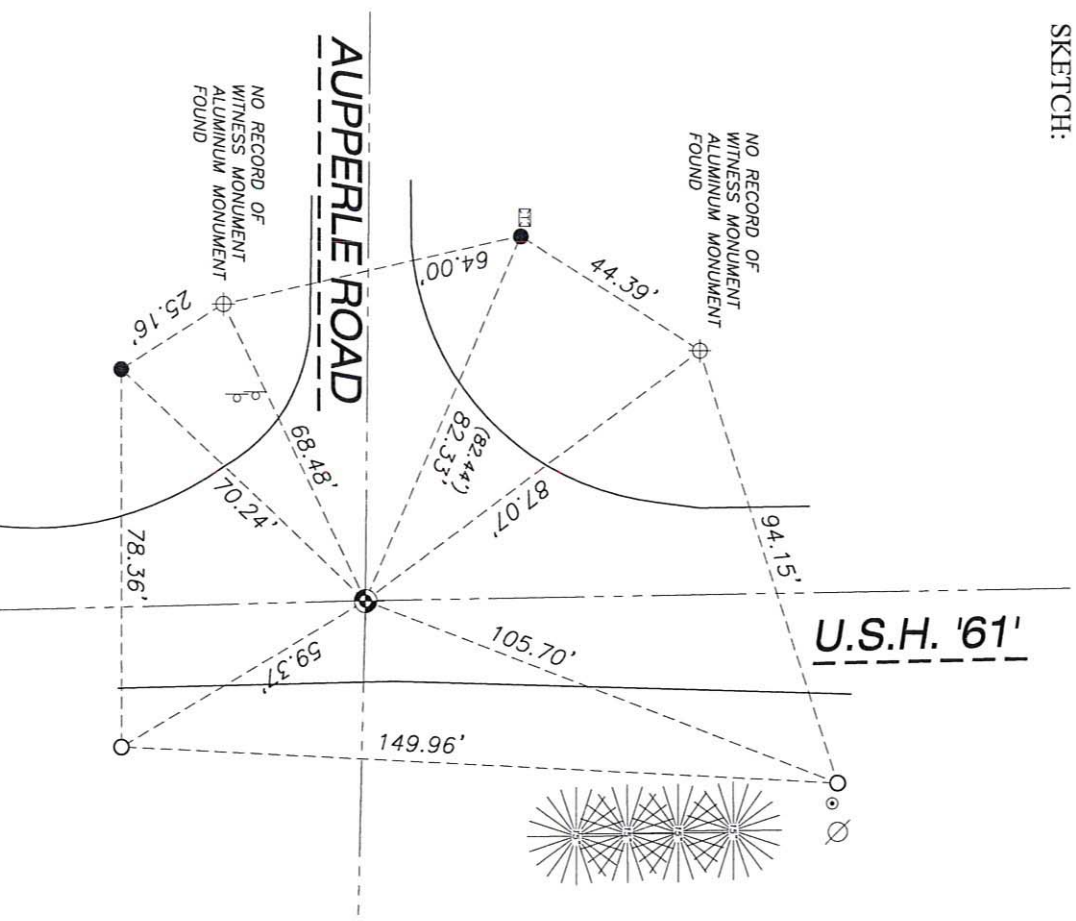
Witnesses to corner location _____

DESCRIPTION OF CORNER AND WITNESS MONUMENTS: references and accessories used to perpetuate the original or re-established location of this corner. (c) (d) (e)

SKETCH:

LEGEND

- GOVERNMENT CORNER
- WITNESS MONUMENT FOUND
- 3/4" REBAR FOUND
- 3/4" x 24" REBAR SET (1.50 LBS/LF)
- POST
- POWER POLE W/GUY
- TELEPHONE PEDESTAL
- CONIFEROUS TREE
- SECTION LINE
- EDGE OF PAVEMENT



JSD Professional Services, Inc.
 Engineers • Surveyors • Planners
 161 HORIZON DRIVE, SUITE 101
 VERONA, WISCONSIN 53593
 PHONE: (608)-848-5080



SCALE: 1" = 40'

SHEET 1 OF 1

63

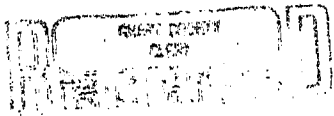
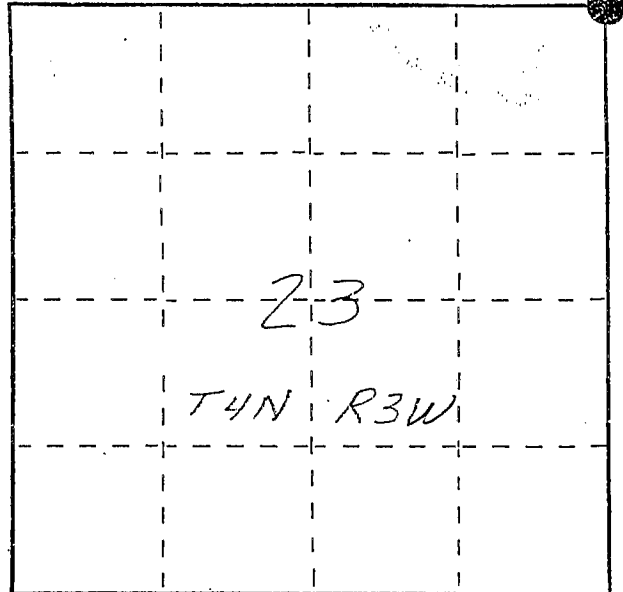
U. S. PUBLIC LAND SURVEY MONUMENT RECORD

INSTRUCTIONS: This record shall show the location of the corner and shall include all of the following nine elements (a through i).

(a) Identify the corner by reference to the U.S. public land survey system.

● = Corner monument restored.

NE corner section 23
T4N R3W of the
4th P.M.
Town of South Lancaster.
Grant County, Wisconsin.



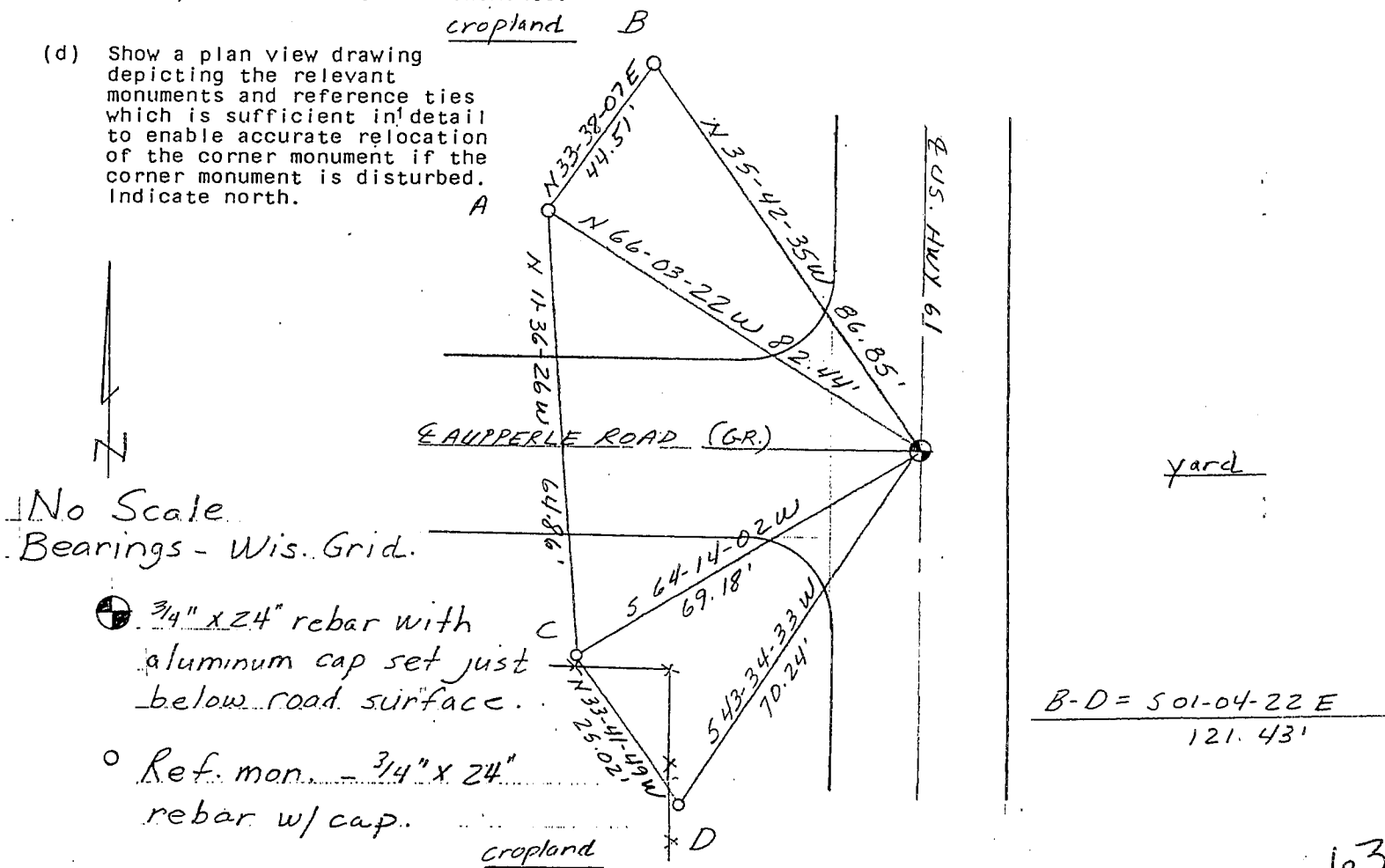
APR 27 1988

(b) Describe any record evidence, monument evidence, occupational evidence, testimonial evidence or any other material evidence you considered, and whether the monument was found or placed.

Accepted RR spike of record. RR spike is referred to in a 1981 Dave A. Davis Survey. Homer Ralph did a survey in 1968 that tied to the NE corner of 23 but there was no call for a specific kind of monument. Location fits other reestablished corners in the area and agrees well with the 1935 hwy R/W plat and existing roadway centerlines. Due to planned construction a Berntsen monument was not set.

(c) In the plan view drawing below, provide reference ties to at least 4 witness monuments, or, if the location is within a municipality, to at least 2 witness monuments. (Witness monuments shall be made of concrete, natural stone, iron or other equally durable material, ~~except wood~~.) Describe witness monuments.

(d) Show a plan view drawing depicting the relevant monuments and reference ties which is sufficient in detail to enable accurate relocation of the corner monument if the corner monument is disturbed. Indicate north.

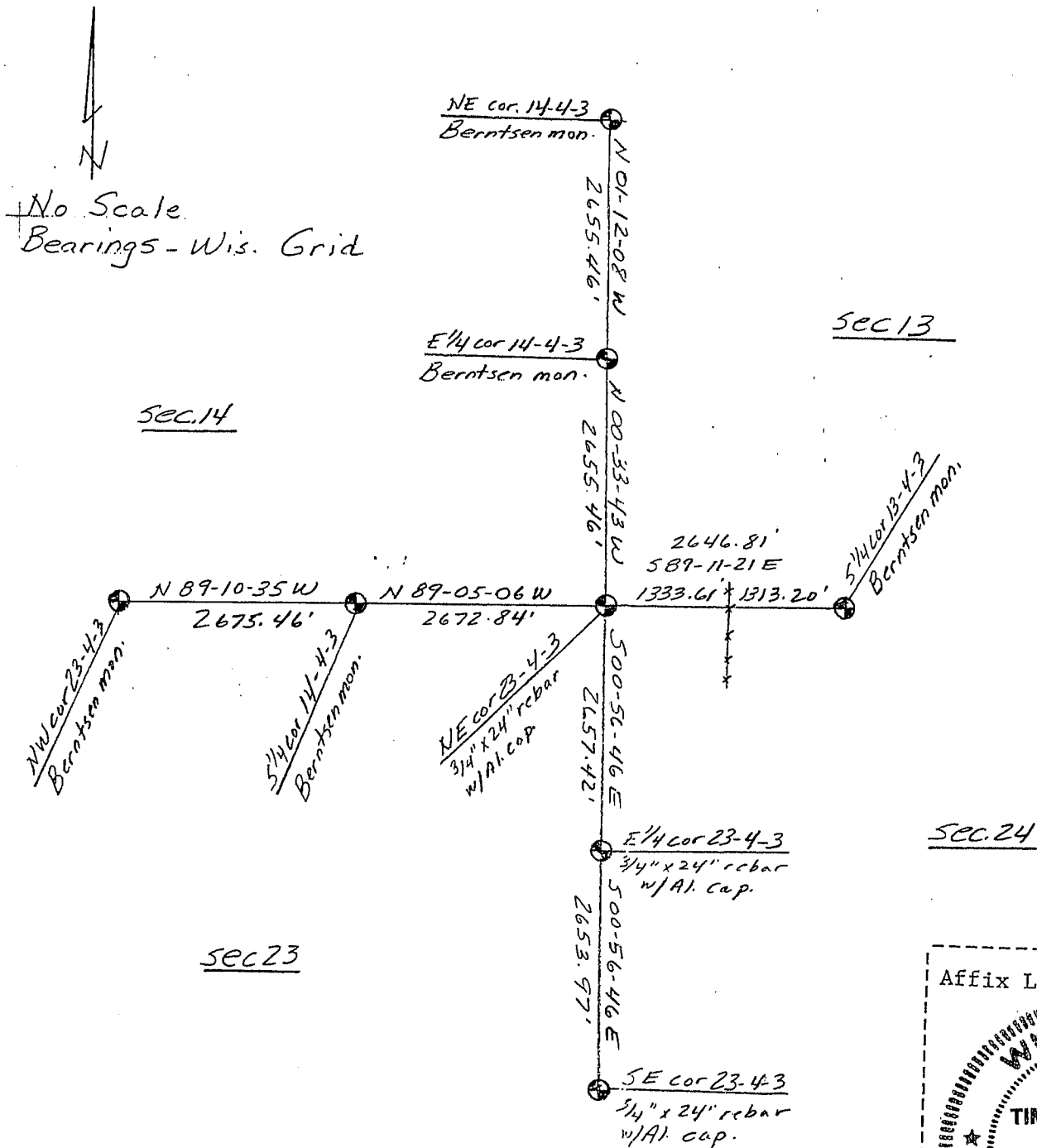


(e) Describe any material discrepancy between the location of the corner as restored or reestablished and the location of that corner as previously restored or reestablished by distance and direction. Show the discrepancy on the plan view drawing under (d), above. Show the distances between the corner as previously restored or reestablished and (1) the corner as restored or reestablished, and (2) to at least 2 of the witness monuments shown on the drawing in (d), above.

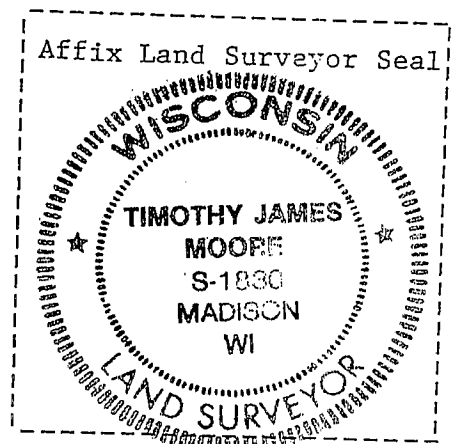
(f) Was the corner restored through acceptance of (1) an obliterated evidence location, or, (2) a found perpetuated location?

Accepted found RR spike of record.

(g&h) Was the corner reestablished through lost corner proportionate methods? If so, show the method, including the directions and distances to other public land survey corners used as evidence or used for proportioning in determining the corner location?



(i) I, Timothy J. Moore
 (type or print name) certify that the corner location shown on this record was determined by me or under my direction and control and that this U.S. Public Land Survey Monument Record is correct and complete to the best of my knowledge and belief.



Timothy J. Moore 3-9-88
 Signature Date