

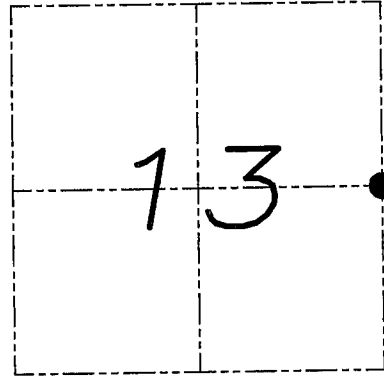
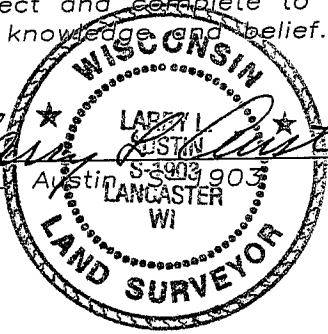
U.S. PUBLIC LAND SURVEY MONUMENT RECORD

Section 13, Town 4 North Range 3 West, Town of South Lancaster, Grant County, Wisconsin

CERTIFICATE

I, Larry L. Austin, do hereby certify that the corner location on this record was determined by me and/or under my direct supervision and that this U.S. public land survey monument record is correct and complete to the best of my knowledge and belief.

Larry L. Austin
 Larry L. Austin, 53903 903 LANCASTER WI
 5.10.08 date



● = CORNER LOCATION

HISTORY OF CORNER

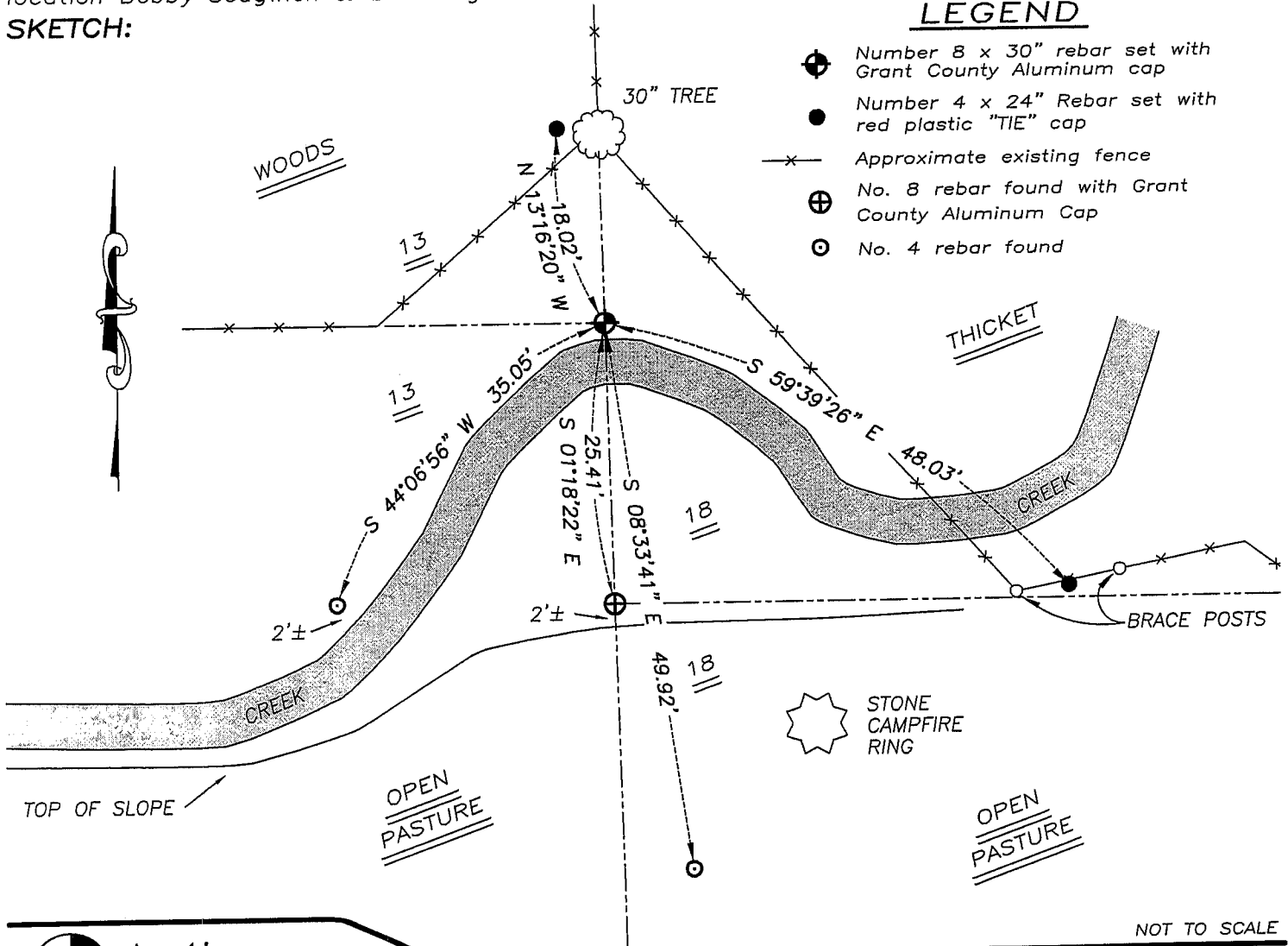
Corner was originally set by Lyon.
 No other record of the corner was found.

CORNER EVIDENCE FOUND

I reset the corner at the projection of occupied lines.
 Verified this location using EDM & GPS methods.

DESCRIPTION OF CORNER AND WITNESS MONUMENTS, references and accessories used to perpetuate the original or re-established location of this corner. Witnesses to monument location Bobby Sedgwick & Brad Digman & Shane Austin

SKETCH:



LEGEND

- ⊕ Number 8 x 30" rebar set with Grant County Aluminum cap
- Number 4 x 24" Rebar set with red plastic "TIE" cap
- x— Approximate existing fence
- ⊕ No. 8 rebar found with Grant County Aluminum Cap
- No. 4 rebar found



Austin Engineering LLC

4211 HWY 81 E, LANCASTER, WI 53813
 PHONE 608-723-6363 FAX 608-723-6702

JOB NUMBER 07S295
 FIELDBOOK: TDSR, 2802
 G:\T4NR2W\T4NR2W
 H:\TIE\T4NR3W\60

DRAWN BY: SW AUSTIN
 APPROVED: LL AUSTIN

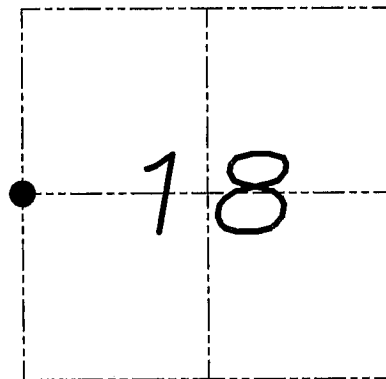
NOT TO SCALE

U.S. PUBLIC LAND SURVEY MONUMENT RECORD

Section 18, Town 4 North Range 2 West, Town of Ellenboro, Grant County, Wisconsin

CERTIFICATE

I, Larry L. Austin, do hereby certify that the corner location on this record was determined by me and/or under my direct supervision and that this U.S. public land survey monument record is correct and complete to the best of my knowledge and belief.



● = CORNER LOCATION



HISTORY OF CORNER

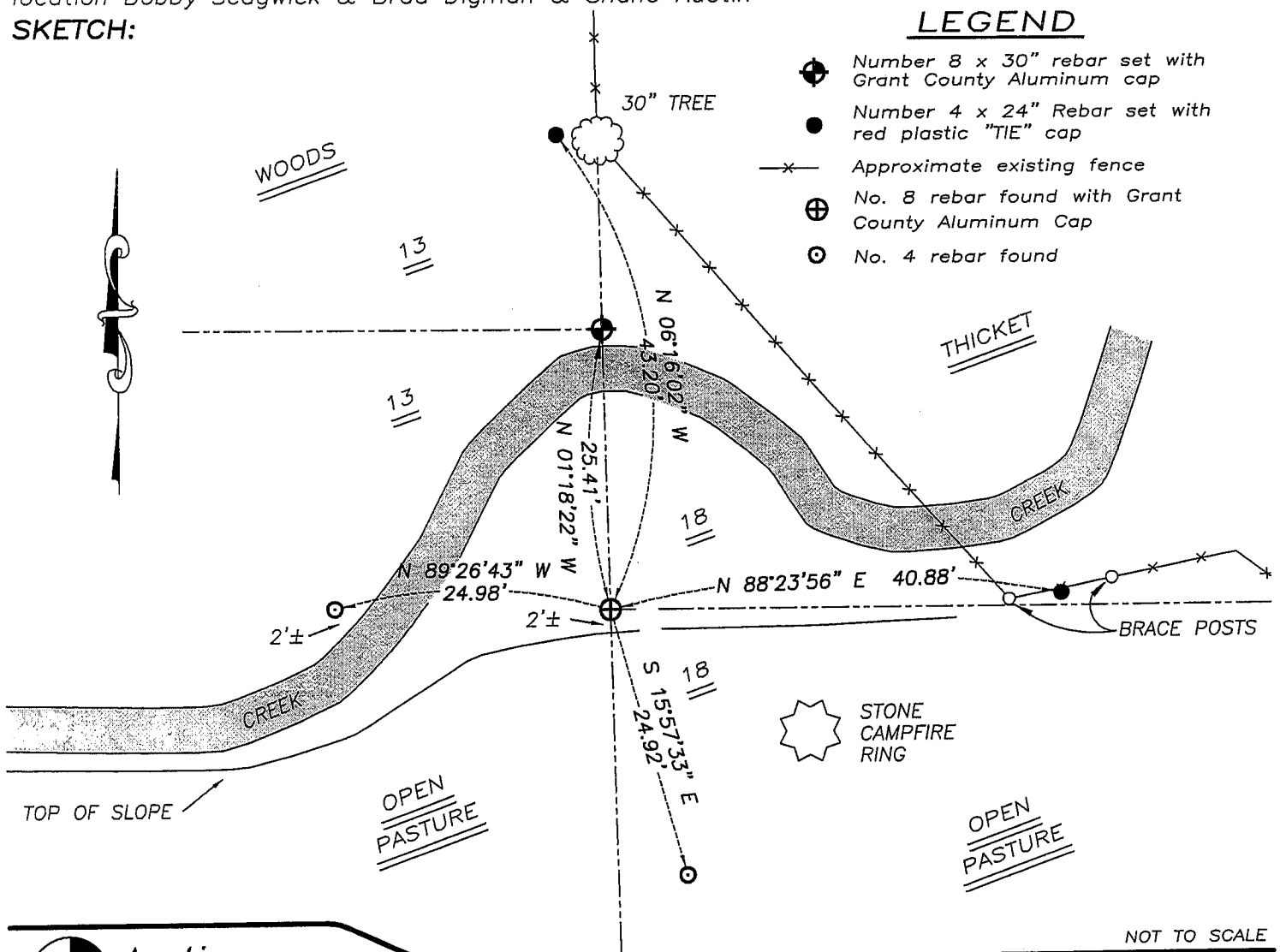
In 1998 I set a county monument at this location. No additional records of the corner were found.

CORNER EVIDENCE FOUND

I found the existing monument and two ties. I set two new ties as shown below. Verified this location using EDM and GPS methods.

DESCRIPTION OF CORNER AND WITNESS MONUMENTS, references and accessories used to perpetuate the original or re-established location of this corner. Witnesses to monument location Bobby Sedgwick & Brad Digman & Shane Austin

SKETCH:



LEGEND

- ⊕ Number 8 x 30" rebar set with Grant County Aluminum cap
- Number 4 x 24" Rebar set with red plastic "TIE" cap
- x- Approximate existing fence
- ⊕ No. 8 rebar found with Grant County Aluminum Cap
- No. 4 rebar found



Austin Engineering LLC

4211 HWY 81 E, LANCASTER, WI 53813
PHONE 608-723-6363 FAX 608-723-6702

JOB NUMBER 07S295
FIELDBOOK: TDSR, 2802
G:\T4NR2W\T4NR2W
H:\TIE\T4NR2W\54

DRAWN BY: SW AUSTIN
APPROVED: LL AUSTIN

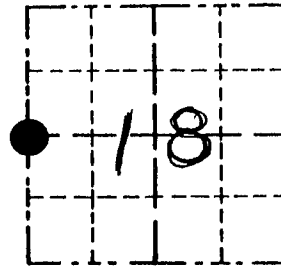
NOT TO SCALE

Survey Monument Record

TYPE OF MONUMENT 1" X 30" IRON BAR SET
W/ Alum. CAP.

CORNER NO. 54
 SECTION 18
 TOWN 4N
 RANGE 2W

FIELD BOOK: 98-04
 PAGE (10)



LOCATION
 (Indicated by "X")

BASIS FOR MONUMENT LOCATION

(Use reverse side if necessary)

Show info such as: History of corner, with reference to Vol. and pg., dates, surveyor; exact description of monument replaced; if location computed, by taped or EDM traverse; landowner, remarks, etc.

CORNER SET IN 1832 BY SIBLEY. NO RECORD OF CORNER FOUND SINCE ORIGINAL SURVEY; CORNER WAS SET AT AN OCCUPIED FENCE CORNER. THIS LOCATION FITS WELL WITH OTHER CORNERS IN AREA, VERIFIED THIS LOCATION USING EDM METHODS.

SEAL:



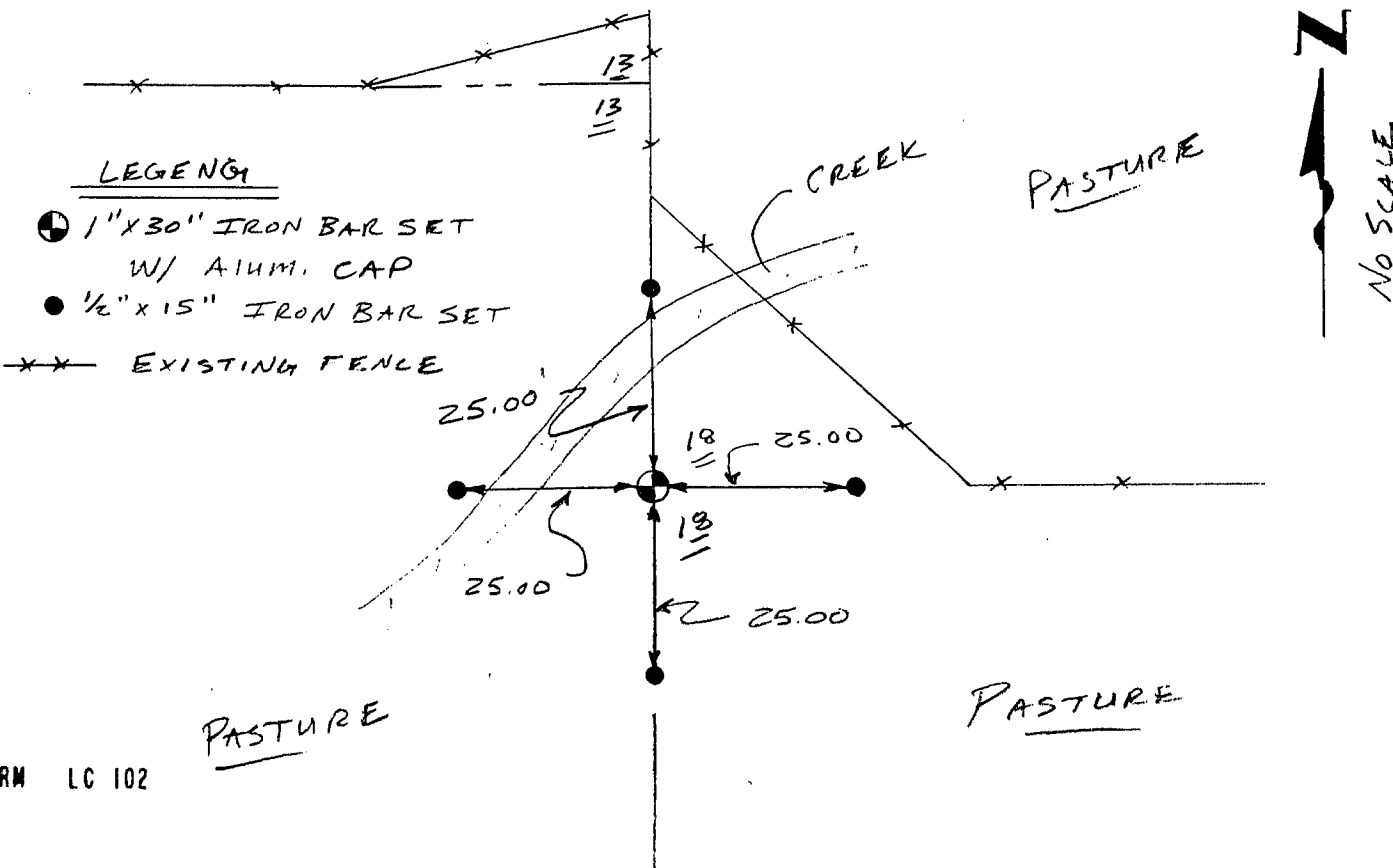
CERTIFIED CORRECT

Larry L. Austin
 Registered Land Surveyor

DATE: 5/26/98

TIE SKETCH

Show at least three (3) ties and monument



LEGEND

- 1" X 30" IRON BAR SET
W/ ALUM. CAP
- 1/2" X 15" IRON BAR SET
- - - EXISTING FENCE