

(e) Describe any material discrepancy between the location of the corner as restored or reestablished and the location of that corner as previously restored or reestablished by distance and direction. Show the discrepancy on the plan view drawing under (d), above. Show the distances between the corner as previously restored or reestablished and (1) the corner as restored or reestablished, and (2) to at least 2 of the witness monuments shown on the drawing in (d), above.

Monument set is 50.79' north of a 1" iron pipe which may have been intended to be the south 1/4 corner of section 13-4-3. There is no record of this iron being set so corner was reestablished as shown on the 1950 R/W plat

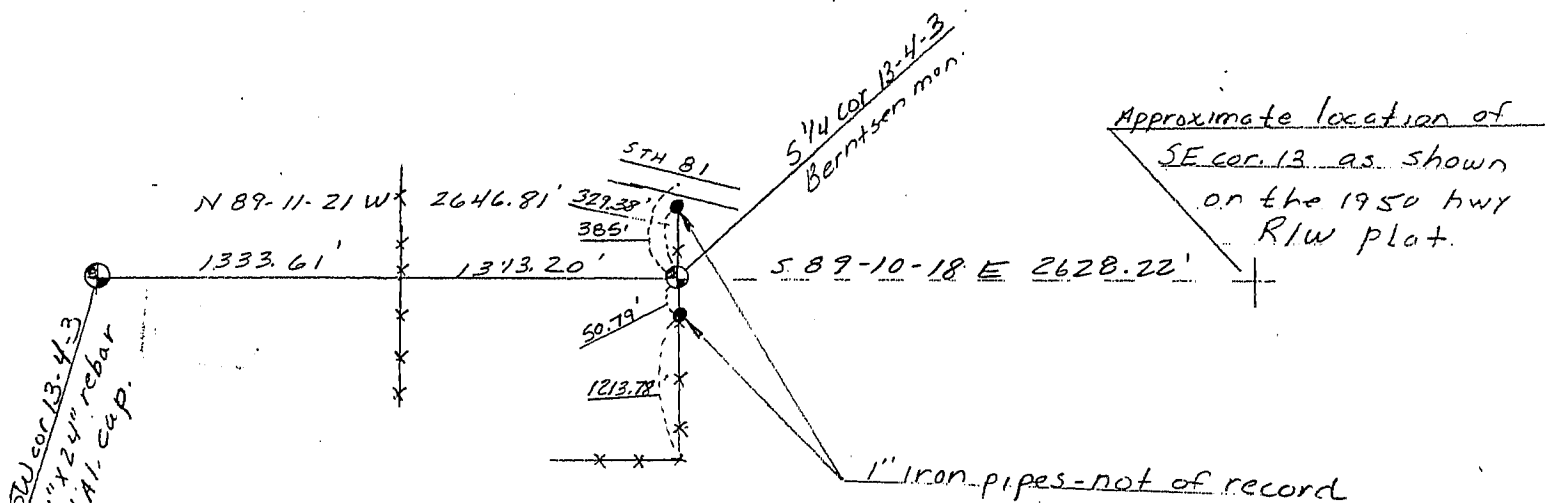
(f) Was the corner restored through acceptance of (1) an obliterated evidence location, or, (2) a found perpetuated location?

(g&h) Was the corner reestablished through lost corner proportionate methods? If so, show the method, including the directions and distances to other public land survey corners used as evidence or used for proportioning in determining the corner location?

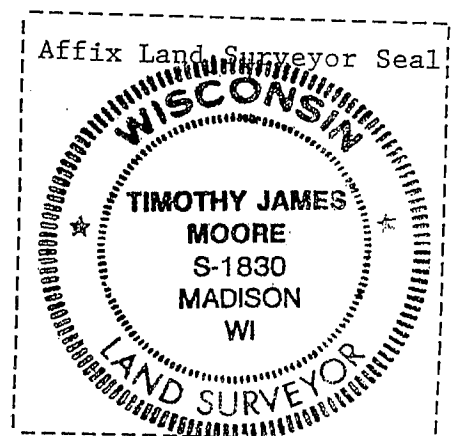


No Scale
Bearings - Wis Grid.

Sec. 13



Sec. 24



(i) I, Timothy J. Moore
(type or print name) certify that the corner location shown on this record was determined by me or under my direction and control and that this U.S. Public Land Survey Monument Record is correct and complete to the best of my knowledge and belief.

Timothy J. Moore

3-9-88