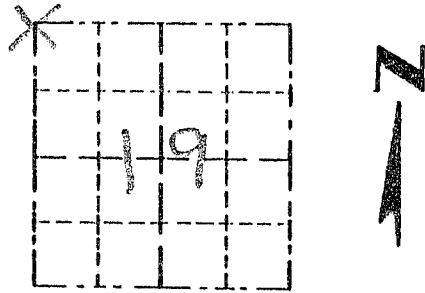


Survey Monument Record

TYPE OF MONUMENT 3/4" x 24" IRON
BAR SET

CORNER NO. _____
 SECTION 19
 TOWN 4N
 RANGE 2W

FIELD BOOK: 97-02
 PAGE _____



LOCATION
 (Indicated by "X")

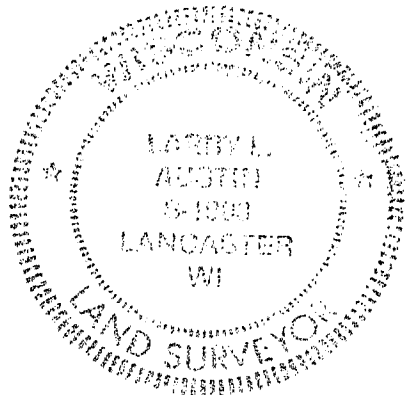
BASIS FOR MONUMENT LOCATION

(Use reverse side if necessary)

Show info such as: History of corner, with reference to Vol. and pg., dates, surveyor; exact description of monument replaced; if location computed, by taped or EDM traverse; landowner, remarks, etc.

CORNER SET IN 1833 BY ROBERT CLARK. NO RECORD OF CORNER FOUND SINCE ORIGINAL SURVEYS; CORNER SET AT THE RECORDED OFFSET FROM THE NE CORNER OF SECTION 24 T4N R3W, AND ON THE EAST LINE OF SECTION 24; VERIFIED THIS LOCATION BY EDM TRAVERSE OF THE AREA

SEAL:



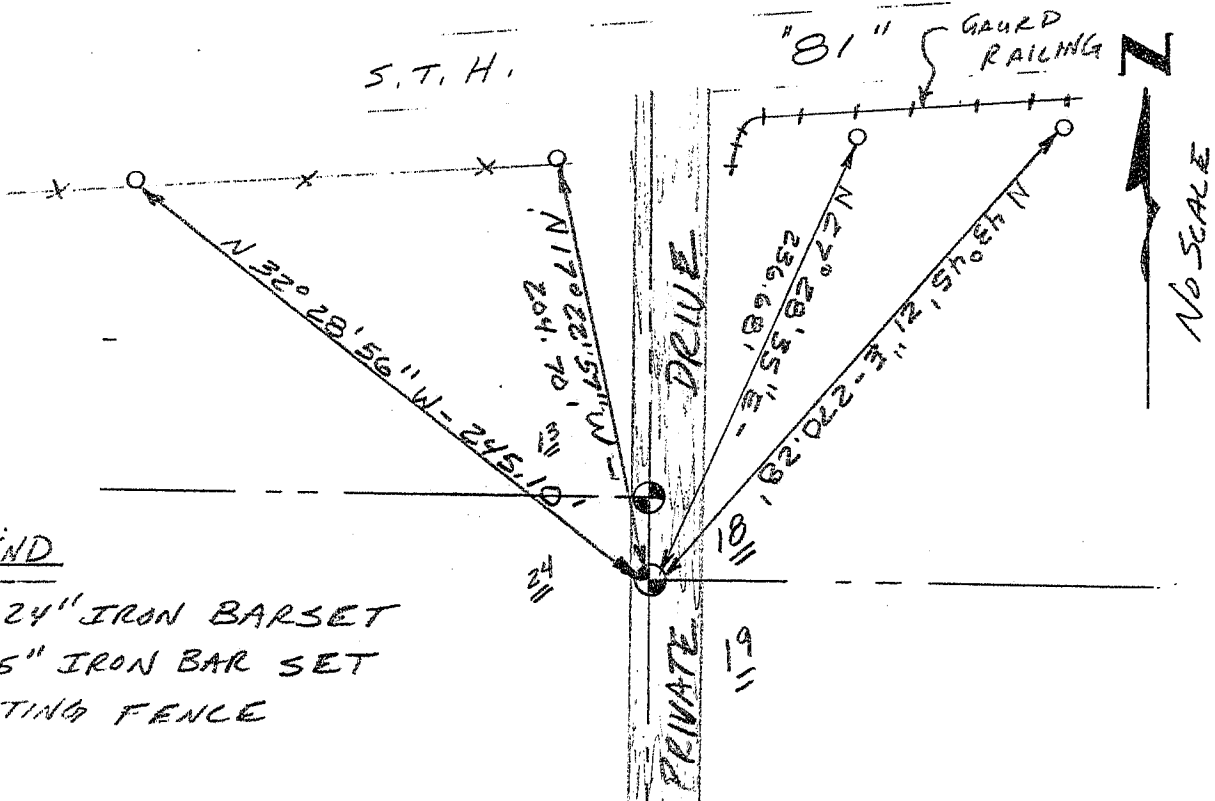
CERTIFIED CORRECT

Larry L. Austin
 Registered Land Surveyor

DATE: 1-12-98

TIE SKETCH

Show at least three (3) ties and monument



LEGEND

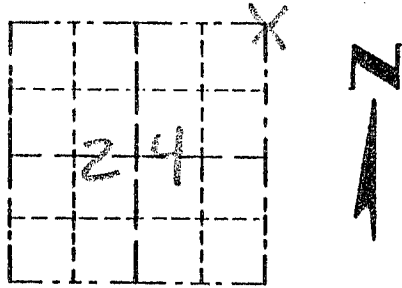
- ⊙ 3/4" x 24" IRON BARSET
- 1/2" x 15" IRON BAR SET
- XX EXISTING FENCE

Survey Monument Record

TYPE OF MONUMENT 3/4" X 24" IRON
BAR SET

CORNER NO. 61
 SECTION 24
 TOWN 4N
 RANGE 3W

FIELD BOOK: 97-02
 PAGE _____

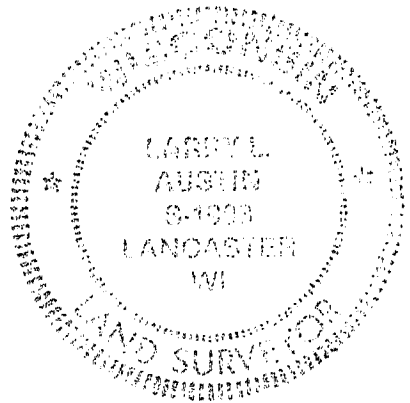


LOCATION
 (Indicated by "X")

BASIS FOR MONUMENT LOCATION

(Use reverse side if necessary)
 Show info such as: History of corner, with reference to Vol. and pg, dates, surveyor; exact description of monument replaced; if location computed, by taped or EDM traverse; landowner, remarks, etc.

SEAL:

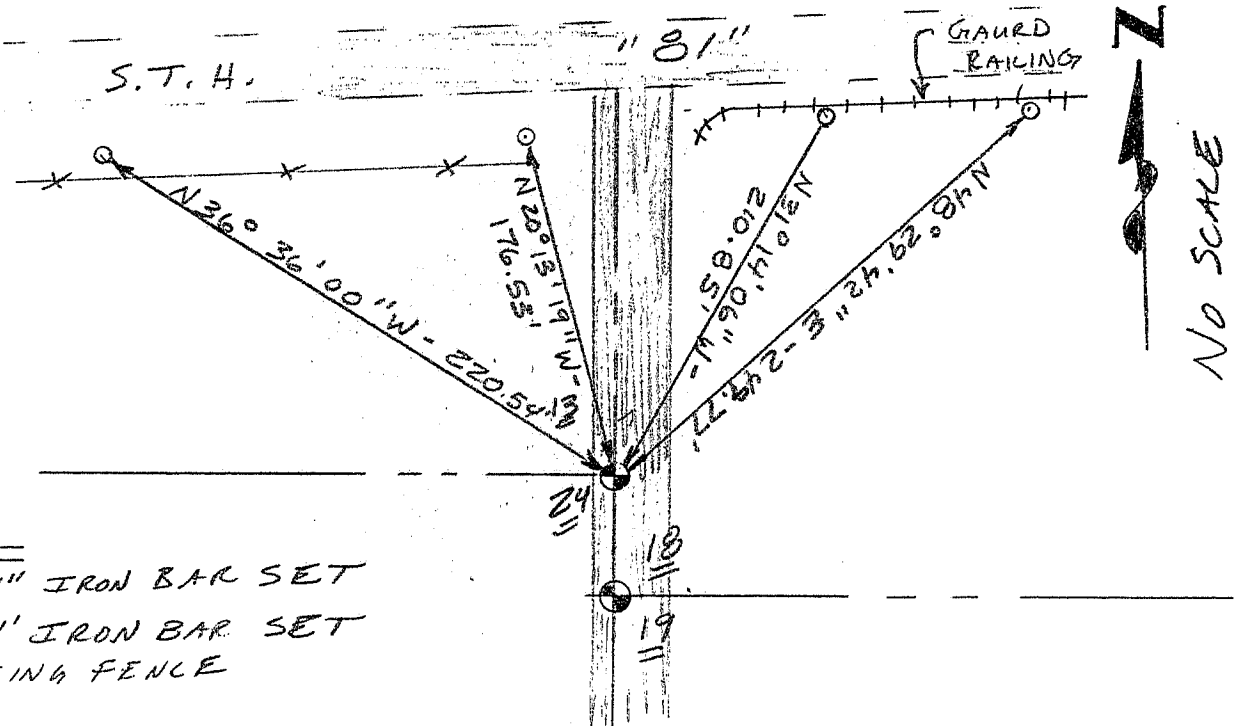


CORNER SET IN 1832 BY SIBLEY, NO RECORD OF CORNER FOUND SINCE ORIGINAL SURVEY; CORNER WAS SET AT AN PROPORTIONATE MEASUREMENT FROM THE WEST 1/4 CORNER OF SECTION 13 T4N R3W AND THE WEST 1/4 OF SECTION 24 T4N R3W. VERIFIED THIS LOCATION USING EDM METHODS.

CERTIFIED CORRECT
Larry L. Austin
 Registered Land Surveyor
 DATE: 1-12-98

TIE SKETCH

Show at least three (3) ties and monument



LEGEND

- 3/4" X 24" IRON BAR SET
- 1/2" X 15" IRON BAR SET
- XX EXISTING FENCE