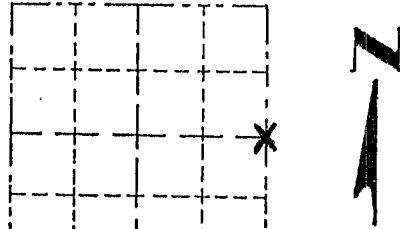


Survey Monument Record

CORNER NO. _____
 SECTION 12
 TOWN 4N
 RANGE 3W

TYPE OF MONUMENT 3/4" X 24" Iron Rod
 STATE PLANE COORDINATES: N _____
 E _____
 ELEVATION — M.S.L. DATUM: _____
 THETA ANGLE: _____
 FIELD BOOK: _____
 PAGE _____



LOCATION
 (Indicated by "X")

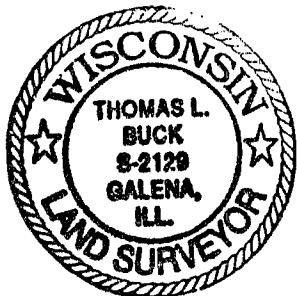
- FOUND PERPETUATED LOCATION
- OBLITERATED EVIDENCE LOCATION
- LOST CORNER (RESTORED BY PROPORTIONATE METHODS)

BASIS FOR MONUMENT LOCATION

(Use reverse side if necessary)

Show info such as: History of corner, with reference to Vol. and pg., dates, surveyor; exact description of monument replaced; if location computed, by taped or EDM traverse; landowner, remarks, etc.

FOUND NO HISTORY OF THIS CORNER SINCE THE ORIGINAL GOVERNMENT SURVEY. I SET THIS MONUMENT AT THE OCCUPIED FENCE CORNER AFTER AN EDM. TRAVERSE AND LOCATION SURVEY OF THE AREA.



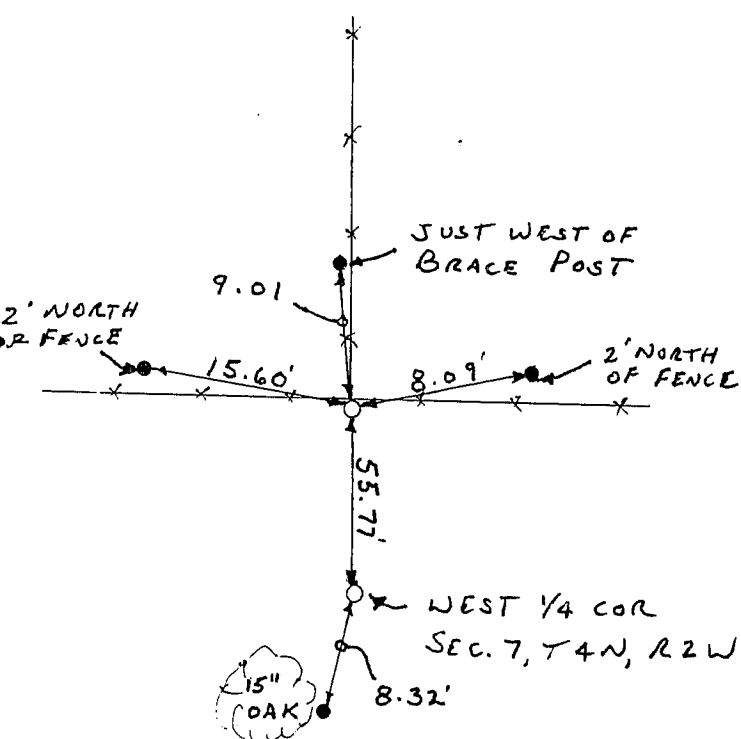
CERTIFIED CORRECT TO THE BEST OF MY KNOWLEDGE AND BELIEF

Thomas Buck
 Registered Land Surveyor

DATE: 8/13/99

TIE SKETCH

Show at least three (3) ties and monument



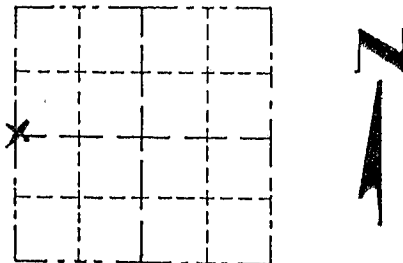
○ = 3/4" X 24" Iron Rod
 ● = 1/2" Iron Rod

— x — x — = EXISTING FENCE

Survey Monument Record

TYPE OF MONUMENT 3/4" X 24" Iron Rod
 STATE PLANE COORDINATES: N _____
 E _____
 ELEVATION — M.S.L. DATUM: _____
 THETA ANGLE: _____
 FIELD BOOK: _____
 PAGE _____

CORNER NO. _____
 SECTION 7
 TOWN 4 NORTH
 RANGE 2 WEST



LOCATION
 (Indicated by "X")

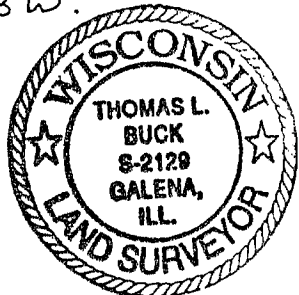
- FOUND PERPETUATED LOCATION
- OBLITERATED EVIDENCE LOCATION
- LOST CORNER (RESTORED BY PROPORTIONATE METHODS)

BASIS FOR MONUMENT LOCATION

(Use reverse side if necessary)

Show info such as: History of corner, with reference to Vol. and pg., dates, surveyor; exact description of monument replaced; if location computed, by taped or EDM traverse; landowner, remarks, etc.

FOUND NO HISTORY OF THIS CORNER SINCE THE ORIGINAL GOVERNMENT SURVEY. I HAD THE OCCUPIED EAST 1/4 CORNER OF SECTION 12 AND SET THIS CORNER AT THE OFFSET DISTANCE ON A LINE TO THE OCCUPIED S E. CORNER OF SECTION 12. AFTER AN E.D.M. TRAVERSE AND LOCATION SURVEY OF SECTIONS 6 + 7, T4N, R2W + PART OF SECTIONS 1 + 12 T4N, R3W.



CERTIFIED CORRECT TO THE BEST OF MY KNOWLEDGE AND BELIEF

Thomas Buck
 Registered Land Surveyor

DATE: 8/13/99

TIE SKETCH

Show at least three (3) ties and monument

