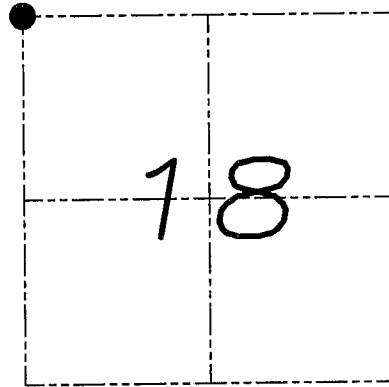


U.S. PUBLIC LAND SURVEY MONUMENT RECORD

Section 18, Town 4 North Range 2 West, Town of Ellenboro, Grant County, Wisconsin

CERTIFICATE

I, Larry L. Austin, do hereby certify that the corner location on this record was determined by me and/or under my direct supervision and that this U.S. public land survey monument record is correct and complete to the best of my knowledge and belief.



Larry L. Austin 5.10.08
 Larry L. Austin, S-90303 date



HISTORY OF CORNER

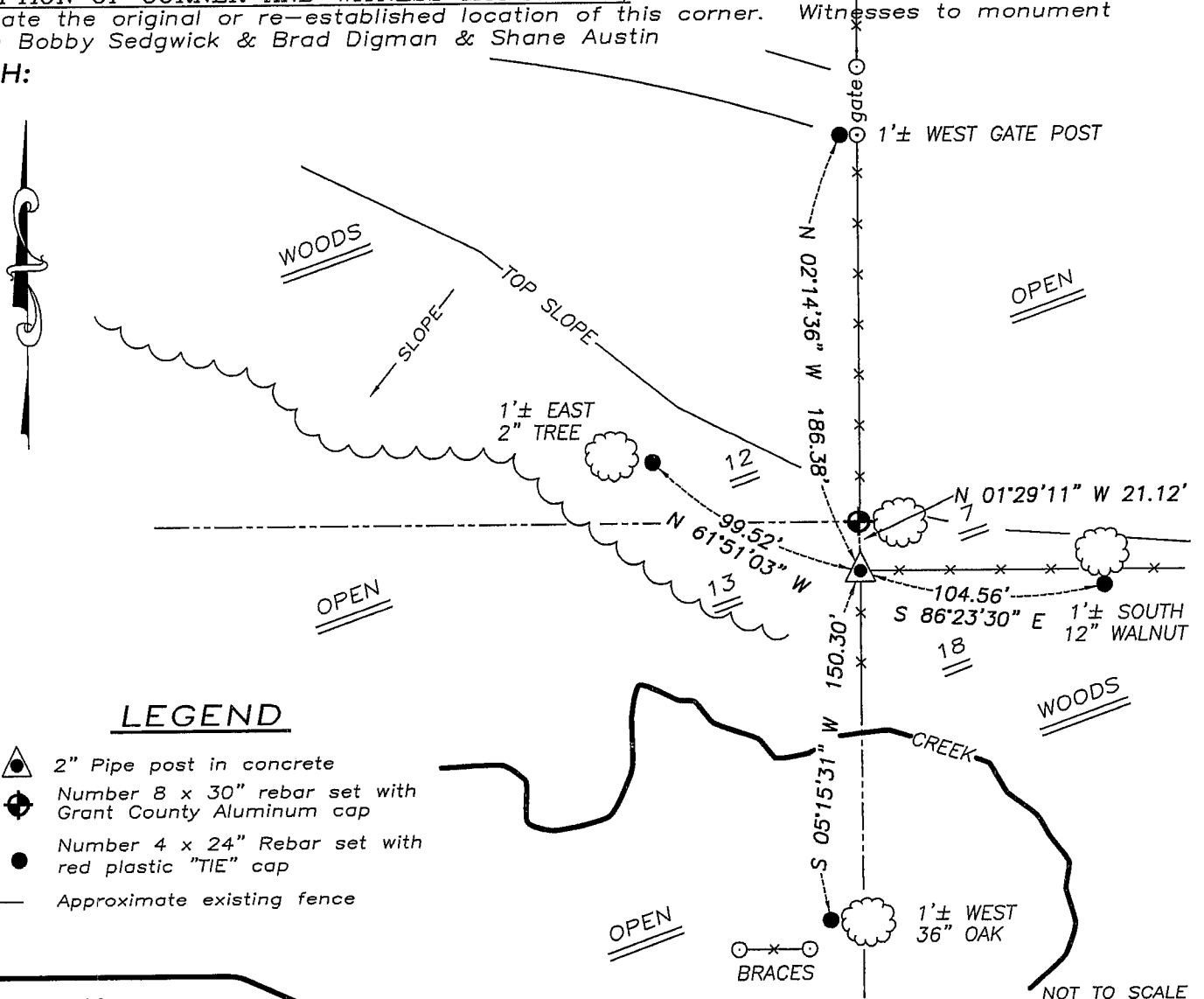
Corner was originally set in 1832 by Clark. No recent record of the corner was found.

CORNER EVIDENCE FOUND

I found an existing 2" pipe post and accepted it's location using EDM & GPS methods.

DESCRIPTION OF CORNER AND WITNESS MONUMENTS, references and accessories used to perpetuate the original or re-established location of this corner. Witnesses to monument location Bobby Sedgwick & Brad Digman & Shane Austin

SKETCH:



LEGEND

- 2" Pipe post in concrete
- Number 8 x 30" rebar set with Grant County Aluminum cap
- Number 4 x 24" Rebar set with red plastic "TIE" cap
- Approximate existing fence



Austin Engineering LLC

4211 HWY 81 E, LANCASTER, WI 53813
 PHONE 608-723-6363 FAX 608-723-6702

JOB NUMBER 07S295
 FIELDBOOK: TDSR, 2802
 G: T4NR2W\T4NR2W
 H: TIE\T4NR2W\53

DRAWN BY: SW AUSTIN
 APPROVED: LL AUSTIN

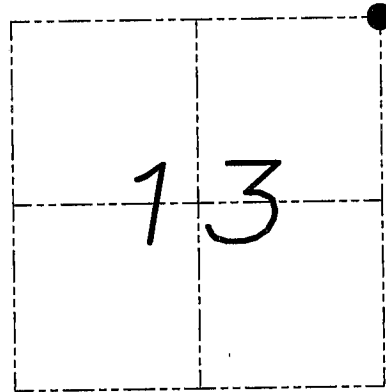
U.S. PUBLIC LAND SURVEY MONUMENT RECORD

Section 13, Town 4 North Range 3 West, Town of South Lancaster, Grant County, Wisconsin

CERTIFICATE

I, Larry L. Austin, do hereby certify that the corner location on this record was determined by me and/or under my direct supervision and that this U.S. public land survey monument record is correct and complete to the best of my knowledge and belief.

Larry L. Austin
 Larry L. Austin, S-19103
 LANCASTER
 WI
 LAND SURVEYOR
 5.10.08
 date



● = CORNER LOCATION

HISTORY OF CORNER

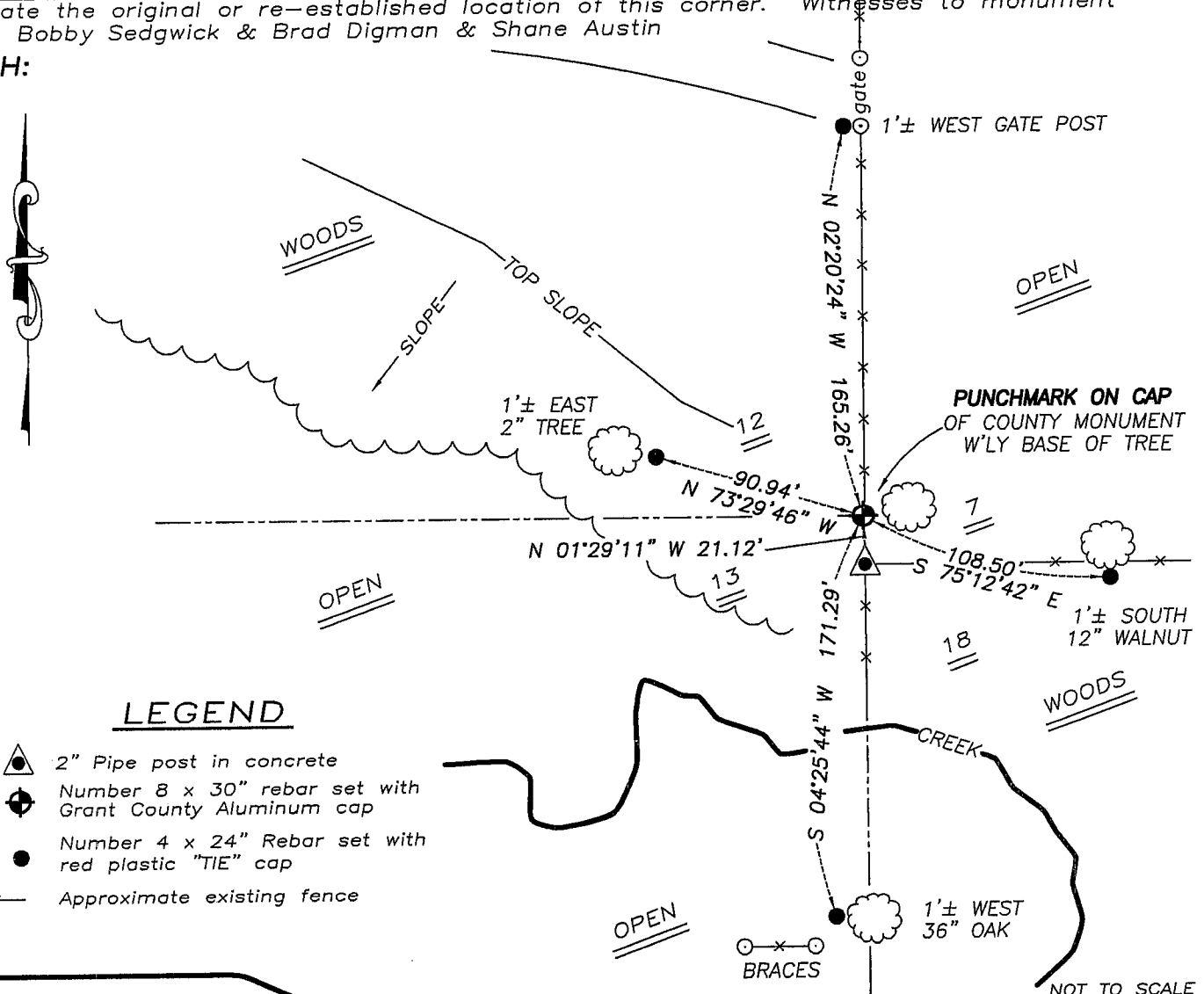
Corner was originally set by Lyon.
 No other record of the corner was found.

CORNER EVIDENCE FOUND

I reset the corner at the recorded offset from the Northwest corner of Section 18, T4N R2W. Verified this location using EDM & GPS methods.

DESCRIPTION OF CORNER AND WITNESS MONUMENTS, references and accessories used to perpetuate the original or re-established location of this corner. Witnesses to monument location Bobby Sedgwick & Brad Digman & Shane Austin

SKETCH:



LEGEND

- ▲ 2" Pipe post in concrete
- ⊕ Number 8 x 30" rebar set with Grant County Aluminum cap
- Number 4 x 24" Rebar set with red plastic "TIE" cap
- x- Approximate existing fence



**Austin
 Engineering LLC**

4211 HWY 81 E, LANCASTER, WI 53813
 PHONE 608-723-6363 FAX 608-723-6702

JOB NUMBER 07S295
 FIELDBOOK: TDSR, 2802
 G:\T4NR2W\T4NR2W
 H:\TIE\T4NR2W\41

DRAWN BY: SW AUSTIN
 APPROVED: LL AUSTIN