

# U.S. PUBLIC LAND SURVEY MONUMENT RECORD - GRANT COUNTY, WI

Section 11, Town 4 North, Range 3 West, Town of South Lancaster

(a)

**NOTE:** This form is intended and designed to fulfill all requirements of Wisconsin Administrative Code. Chapter A-E 7.08, U.S. Public Land Survey Monument Record (3) (a) (b) (c) (d) (e) (f) (g) (h) (i). "An additional sheet *may* be added if necessary to conform with said requirements."

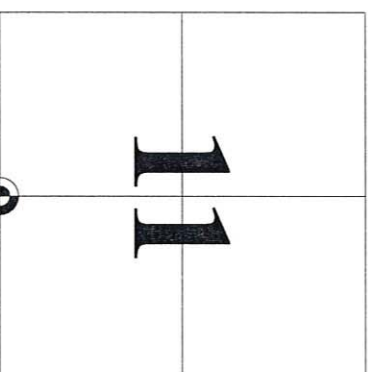
**CERTIFICATE:**

(i)

I, John Krebs, do hereby certify that the corner location on this record was determined by me and/or under my direct supervision and that this U.S. Public Land Survey Monument Record is correct and complete to the best of my knowledge and belief.

Dated this 4th day of April, 2012.

*John Krebs*  
 John Krebs, S-1878 4-23-12



CORNER LOCATION

**HISTORY OF CORNER ESTABLISHMENT:**

Timothy J. Moore set a rebar with Aluminum cap on March 9, 1988.  
 Michael S. O'Keefe, S-2743, located corner on July 6, 2011, before road construction began.

**DESCRIPTION OF CORNER EVIDENCE FOUND:**

(b) (i) (g) (h)

Corner was removed during road construction. Replaced corner per location by Michael S. O'Keefe. Found 2 ties as shown on a tie sheet by Timothy J. Moore, S-1830, dated March 9, 1088. Set cotton pin at Section corner, and found on two additional ties and set a tie as shown hereon.

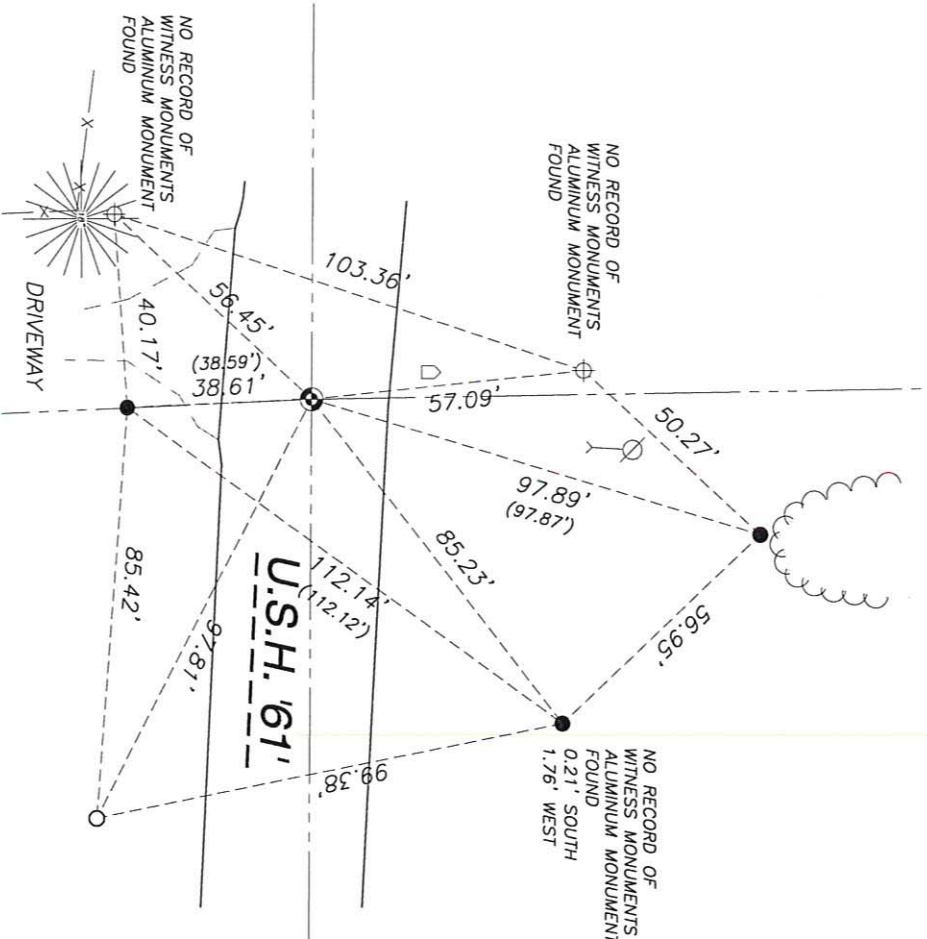
Witnesses to corner location \_\_\_\_\_

**DESCRIPTION OF CORNER AND WITNESS MONUMENTS:** references and accessories used to perpetuate the original or re-established location of this corner. (c) (d) (e)

**SKETCH:**

**LEGEND**

- GOVERNMENT CORNER
- WITNESS MONUMENT FOUND
- 3/4" REBAR FOUND
- 3/4" x 24" REBAR SET (1.50 LBS/LF)
- MAIL BOX
- POWER POLE W/GUY
- CONIFEROUS TREE
- SECTION LINE
- EDGE OF PAVEMENT
- EDGE OF GRAVEL
- FENCE LINE



NO RECORD OF WITNESS MONUMENTS ALUMINUM MONUMENT FOUND

NO RECORD OF WITNESS MONUMENTS ALUMINUM MONUMENT FOUND  
 0.21' SOUTH  
 1.76' WEST

NO RECORD OF WITNESS MONUMENTS ALUMINUM MONUMENT FOUND

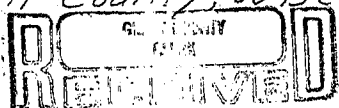


# U. S. PUBLIC LAND SURVEY MONUMENT RECORD

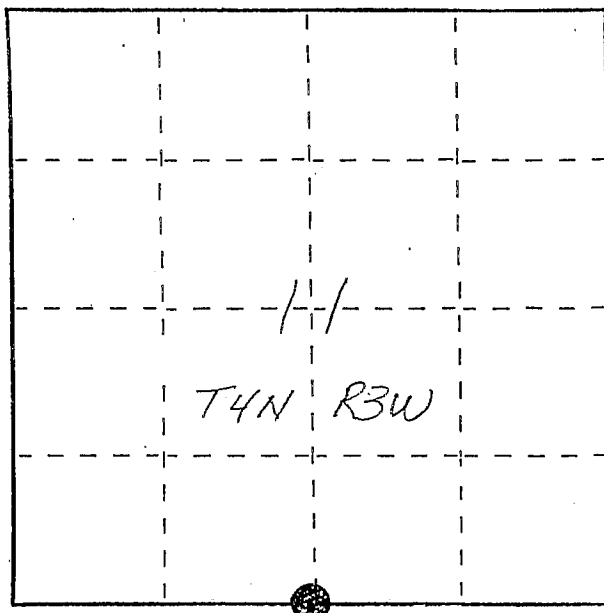
INSTRUCTIONS: This record shall show the location of the corner and shall include all of the following nine elements (a through i).

- (a) Identify the corner by reference to the U.S. public land survey system.
- = Corner monument restored.

5/4 corner section 11  
 T4N R3W of the  
 4th P.M.  
 Town of South Lancaster  
 Grant County, Wisconsin.



APR 27 1981



- (b) Describe any record evidence, monument evidence, occupational evidence, testimonial evidence or any other material evidence you considered, and whether the monument was found or placed.

Monument reestablished as shown on a 1981 survey by John M. Halverson. Corner location agrees with other corners reestablished in area, occupation evidence, and the 1950 U.S.H. 61 R/W plat. Due to planned construction a Berntsen monument was not set.

- (c) In the plan view drawing below, provide reference ties to at least 4 witness monuments, or, if the location is within a municipality, to at least 2 witness monuments. (Witness monuments shall be made of concrete, natural stone, iron or other equally durable material, ~~except wood.~~) Describe witness monuments.

- (d) Show a plan view drawing depicting the relevant monuments and reference ties which is sufficient in detail to enable accurate relocation of the corner monument if the corner monument is disturbed. Indicate north.

