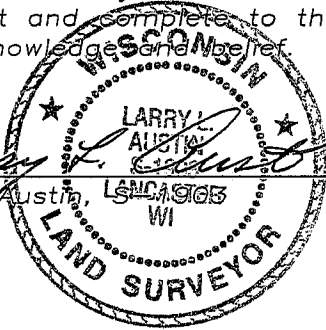


# U.S. PUBLIC LAND SURVEY MONUMENT RECORD

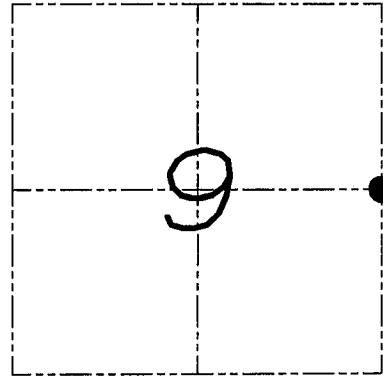
Section 9, Town 4 North Range 3 West, Town of South Lancaster, Grant County, Wisconsin

## CERTIFICATE

I, Larry L. Austin, do hereby certify that the corner location on this record was determined by me and/or under my direct supervision and that this U.S. public land survey monument record is correct and complete to the best of my knowledge and belief.



*Larry L. Austin* 4.10.08  
 Larry L. Austin, LAND SURVEYOR date



● = CORNER LOCATION

## HISTORY OF CORNER

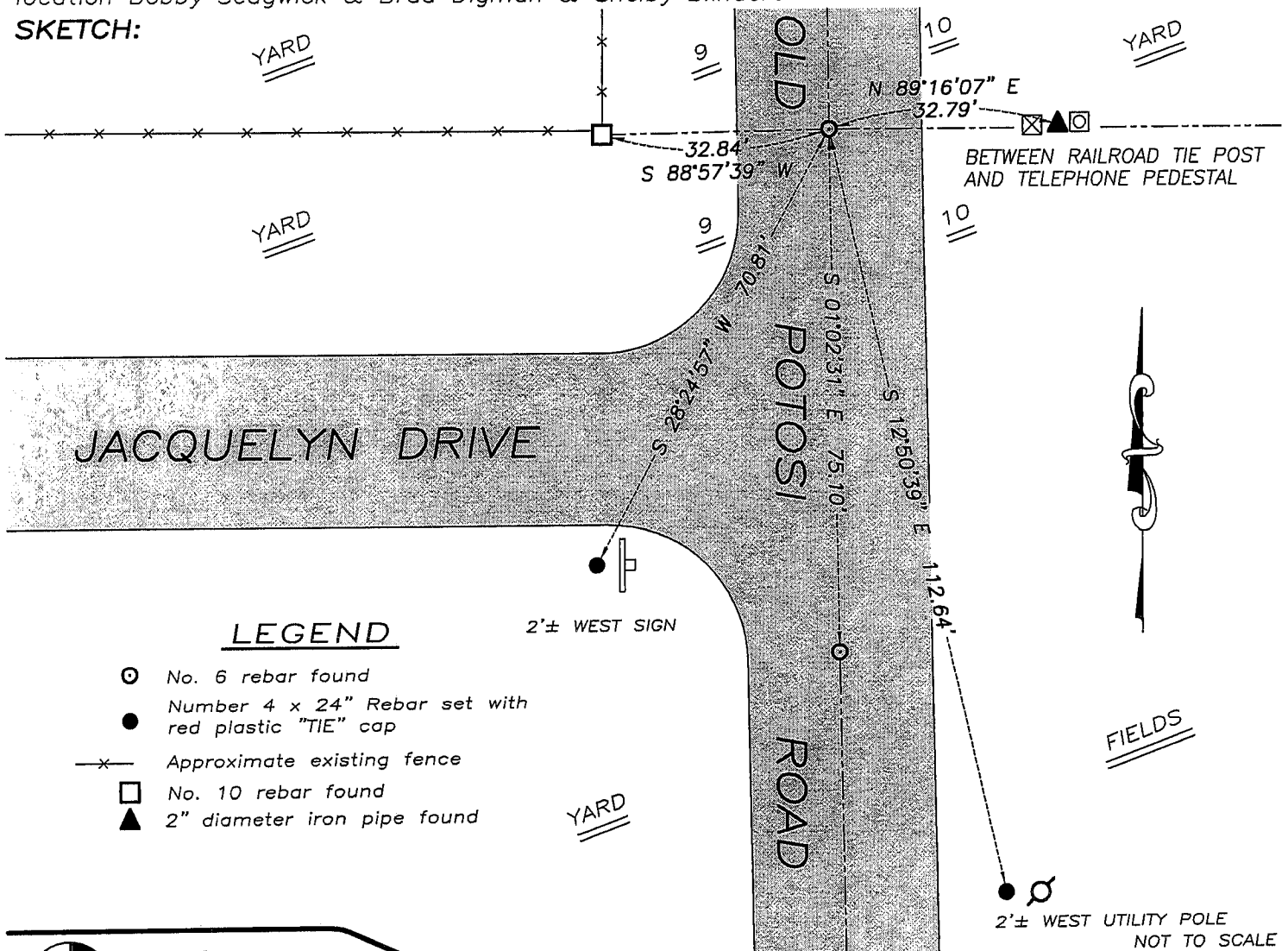
Corner was originally set in 1833 by Clark. Many surveys have tied to the corner.

## CORNER EVIDENCE FOUND

I found the No. 6 iron bar which has been recorded on various surveys. I accepted its location after an EDM & GPS traverse of the area. I tied the corner as shown below.

DESCRIPTION OF CORNER AND WITNESS MONUMENTS, references and accessories used to perpetuate the original or re-established location of this corner. Witnesses to monument location Bobby Sedgwick & Brad Digman & Shelby Blindert

## SKETCH:



## LEGEND

- ⊙ No. 6 rebar found
- Number 4 x 24" Rebar set with red plastic "TIE" cap
- x- Approximate existing fence
- No. 10 rebar found
- ▲ 2" diameter iron pipe found



**Austin Engineering LLC**

4211 HWY 81 E, LANCASTER, WI 53813  
 PHONE 608-723-6363 FAX 608-723-6702

JOB NUMBER 08S023  
 FIELDBOOK: TDSR, 2707  
 G:\T4NR3W\17  
 H:\TIE\T4NR3W\37

DRAWN BY: SW AUSTIN  
 APPROVED: LL AUSTIN