

GRANT COUNTY CERTIFIED LAND CORNER

CORNER NO. 50

T 4 N R 3 W

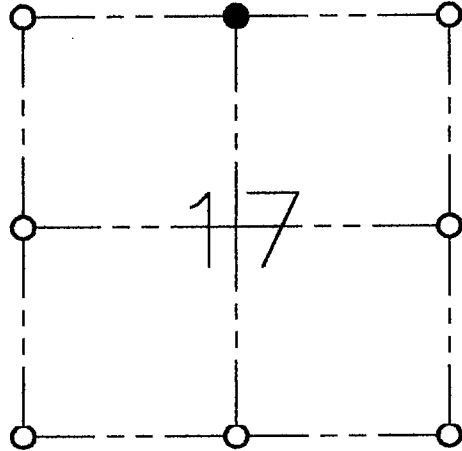
TOWN OF SOUTH LANCASTER

CERTIFICATE:

I, LARRY L. AUSTIN, DO HEREBY CERTIFY THAT ON 11 DAY OF NOVEMBER, 1998, I FOUND OCCUPATIONAL EVIDENCE OF THE NORTH 1/4 CORNER OF SECTION 17, TOWN 4 NORTH, RANGE 3 WEST, OF THE FOURTH PRINCIPAL MERIDIAN, AND I RE-ESTABLISHED SAID CORNER ACCORDING TO THE WISCONSIN STATUTES AS SHOWN AND DESCRIBED HEREON.

DATED THIS 10 DAY OF OCT, 1998

Larry L. Austin
LARRY L. AUSTIN S-1903



● = CORNER LOCATION



SEAL

HISTORY OF ORIGINAL CORNER ESTABLISHMENT:

CORNER SET IN 1833 BY ROBERT CLARK.
NO OTHER RECORD OF CORNER FOUND.

DESCRIPTION OF CORNER EVIDENCE FOUND:

AN EXISTING FENCE CORNER VERIFIED
ITS LOCATION USING E.D.M. AND G.P.S. METHODS.

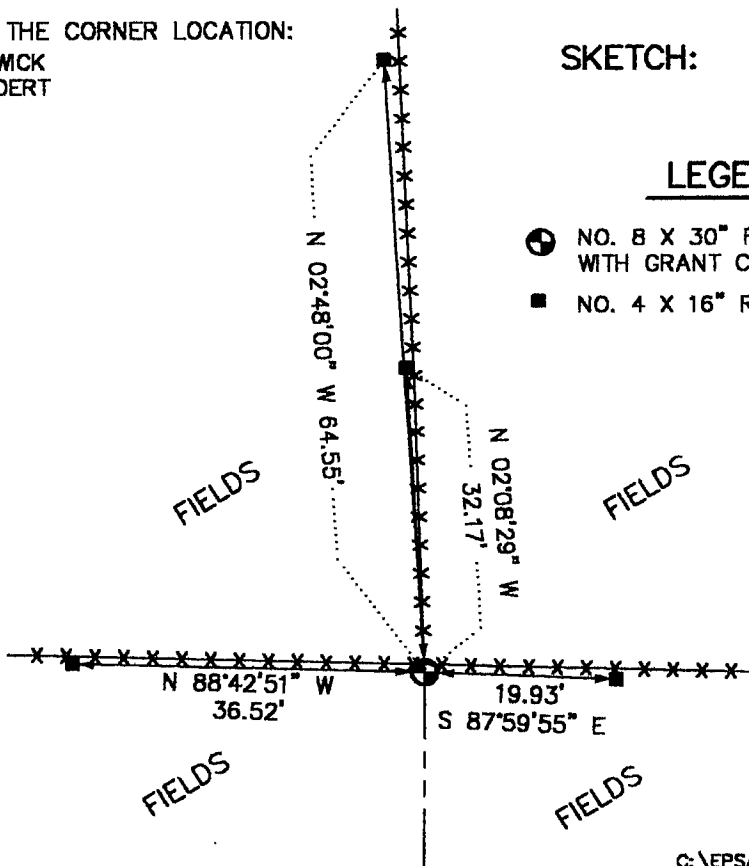
DESCRIPTION OF CORNER AND WITNESS MONUMENTS, REFERENCES AND ACCESSORIES USED TO PERPETUATE THE ORIGINAL OR RE-ESTABLISHED LOCATION OF THIS CORNER:

WITNESS TO THE CORNER LOCATION:
BOBBY SEDGWICK
SHELBY BLINDERT

SKETCH:

LEGEND

- NO. 8 X 30" REBAR SET WITH GRANT COUNTY CAP
- NO. 4 X 16" REBAR SET



NOT TO SCALE

C:\EPSA\PROGRAM\TIE\T4NR3W\17N