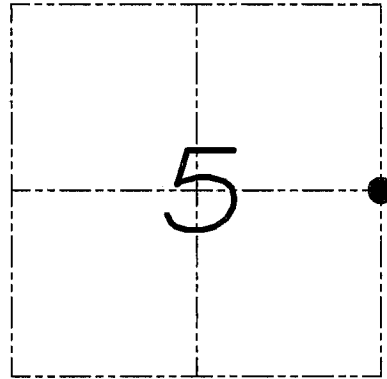


U.S. PUBLIC LAND SURVEY MONUMENT RECORD

Section 5, Town 4 North Range 3 West, Township
of South Lancaster, Grant County, Wisconsin

CERTIFICATE

I, Larry L. Austin, do hereby certify that the corner location on this record was determined by me and/or under my direct supervision and that this U.S. public land survey monument record is correct and complete to the best of my knowledge and belief.



● = CORNER LOCATION



7-15-08
date

HISTORY OF CORNER

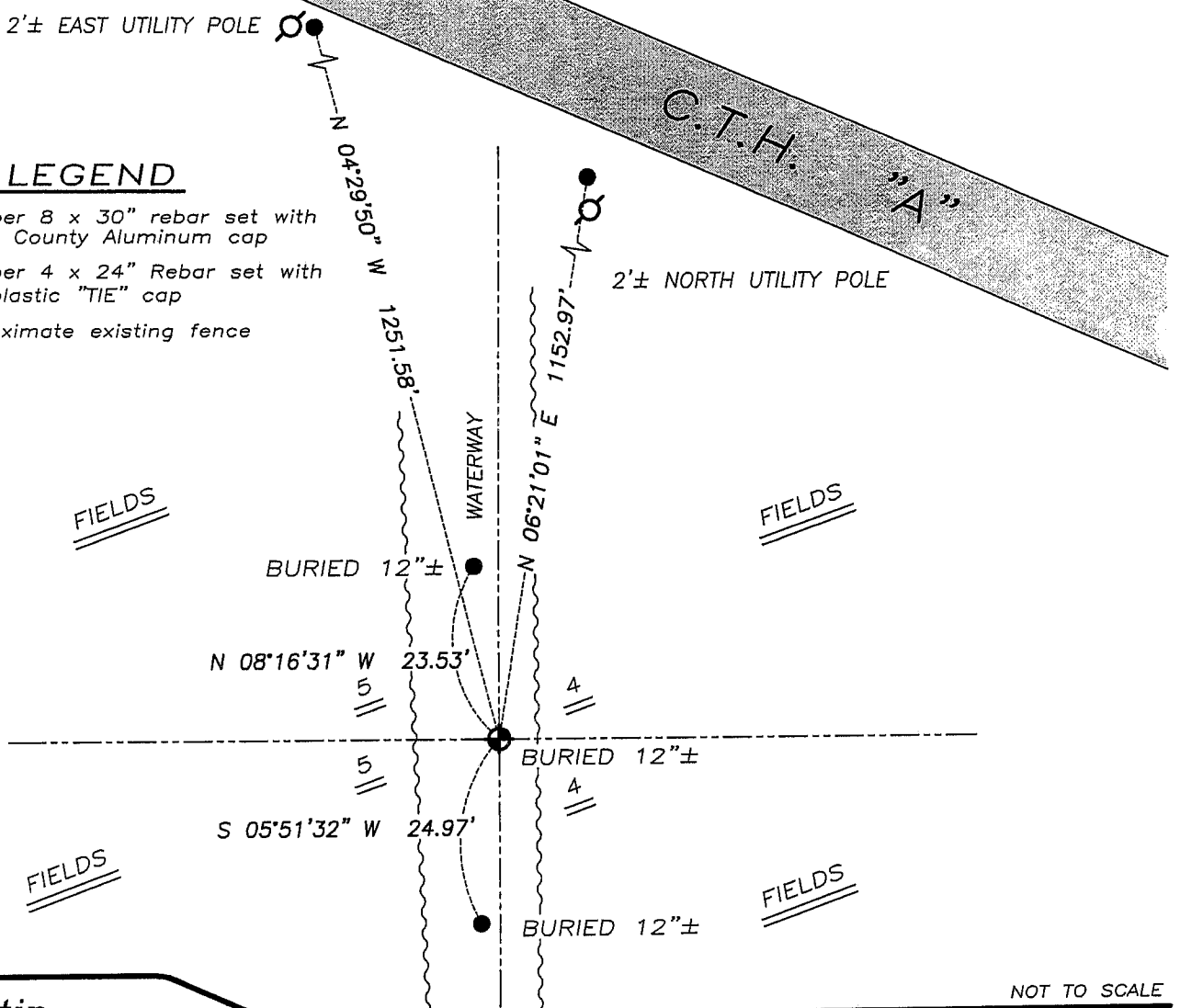
Corner was originally set in 1832 by Clark. Various surveyors have tied to the corner over the years. In 1996 Larosa filed a tie sheet showing an existing 2" iron pipe.

CORNER EVIDENCE FOUND

The 2" iron pipe was removed during bulldozing. I reset the corner based on measurements to adjoining corners. Verified this location using EDM & GPS methods.

DESCRIPTION OF CORNER AND WITNESS MONUMENTS, references and accessories used to perpetuate the original or re-established location of this corner. Witnesses to monument location Bobby Sedgwick & Brad Digman & Shelby Blindert

SKETCH:



LEGEND

- ⊕ Number 8 x 30" rebar set with Grant County Aluminum cap
- Number 4 x 24" Rebar set with red plastic "TIE" cap
- x- Approximate existing fence

NOT TO SCALE



Austin
Engineering LLC

4211 HWY 81 E, LANCASTER, WI 53813
PHONE 608-723-6363 FAX 608-723-6702

JOB NUMBER 08S087
FIELDBOOK: TDSR, 2711
G:\T4NR4W\21
H:\TIE\T4NR3W\16

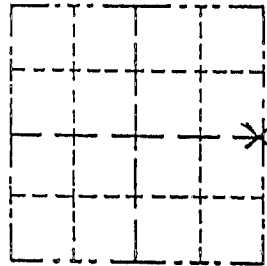
DRAWN BY: SW AUSTIN
APPROVED: LL AUSTIN

JAN 13 1997

GRANT CO.
Survey Monument Record

EXISTING
TYPE OF MONUMENT 2" IRON PIPE CORNER POST
STATE PLANE COORDINATES: N _____
E _____
ELEVATION — M.S.L. DATUM: _____
THETA ANGLE: _____
FIELD BOOK: 96-10
PAGE _____

CORNER NO. _____
SECTION 5
TOWN 4N
RANGE 3W



LOCATION
(Indicated by "X")

- FOUND PERPETUATED LOCATION
- OBLITERATED EVIDENCE LOCATION
- LOST CORNER (RESTORED BY PROPORTIONATE METHODS)

BASIS FOR MONUMENT LOCATION

(Use reverse side if necessary)
Show info such as: History of corner, with reference to Vol. and pg., dates, surveyor; exact description of monument replaced; if location computed, by taped or EDM traverse; landowner, remarks, etc.

Ties were set for an existing 2" diameter Iron Pipe corner post noted in the following surveys:

BY	DATE	DATE
Larry Austin	6/4/87	8/7/87
David Krohn	6/17-22/76	7/14-25/77
Roland Sarko	12/7/1978	

(NO RECORDED TIESHEETS FOUND AT COURT HOUSE)



CERTIFIED CORRECT TO THE BEST OF MY KNOWLEDGE AND BELIEF

Michael R. LaRosa
Registered Land Surveyor
DATE: 12/18/1996

TIE SKETCH

Show at least (4) ties and monument

Brs & Dist from corner

N 2° 18' 32" W
25.88'

N 5° 12' 28" W
12.26'

S 4° 59' 03" W
13.73'

S 2° 51' 30" W
26.56'



1" = 20' ±

- Legend
- x — x — fence
 - 1/2" IRON PIPE SET
 - gate post

Ridge & Brush line

gate