

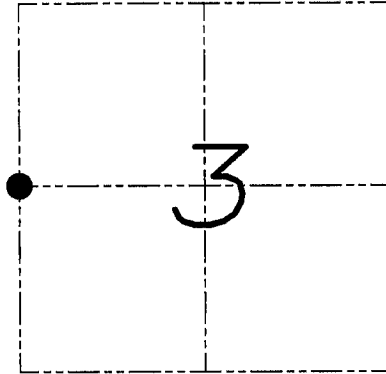
U.S. PUBLIC LAND SURVEY MONUMENT RECORD

Section 3, Town 4 North Range 3 West, Town of South Lancaster, Grant County, Wisconsin

CERTIFICATE

I, Larry L. Austin, do hereby certify that the corner location on this record was determined by me and/or under my direct supervision and that this U.S. public land survey monument record is correct and complete to the best of my knowledge and belief.

Larry L. Austin
Larry L. Austin, S-1903



● = CORNER LOCATION

HISTORY OF CORNER

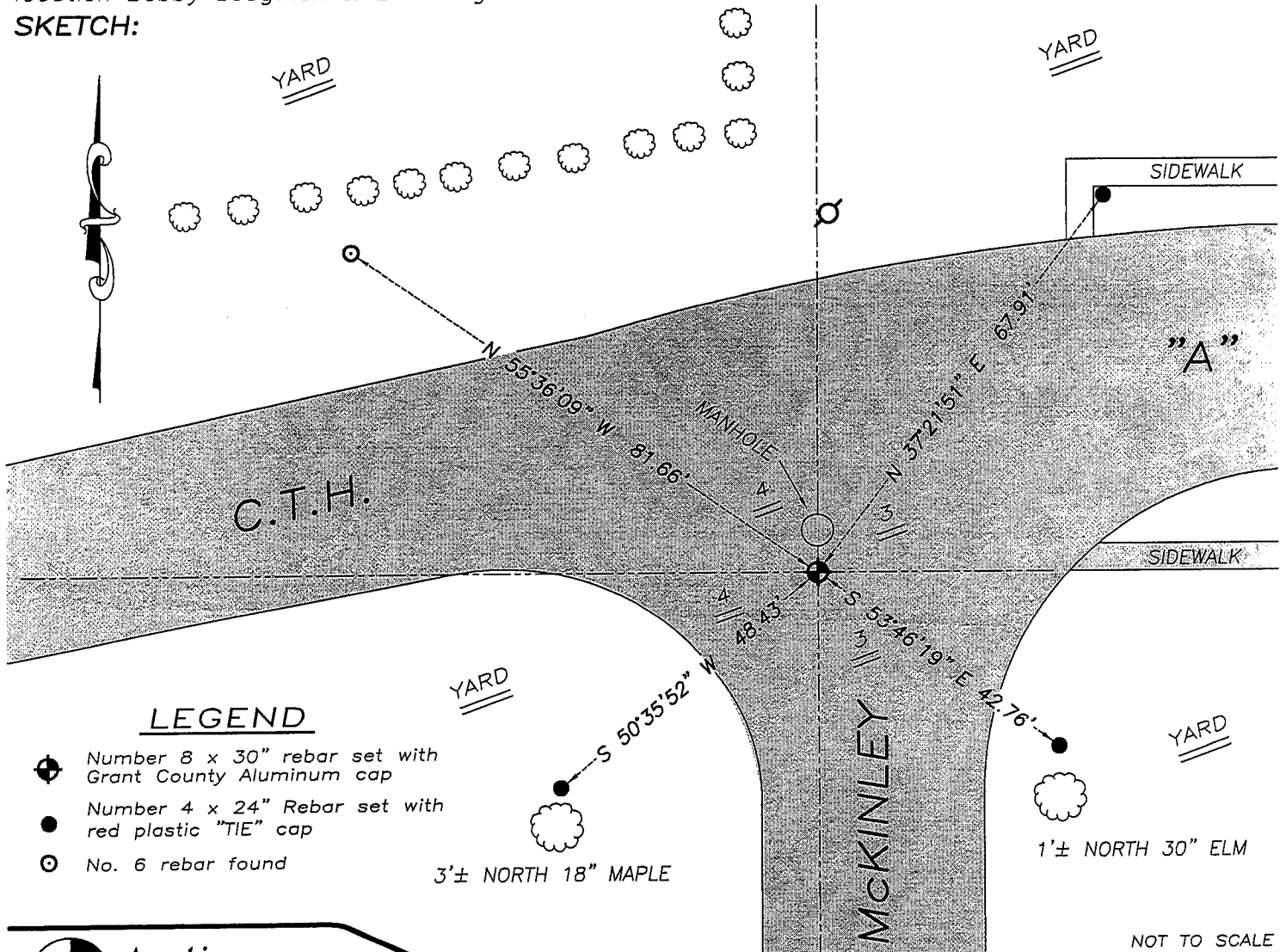
Corner was originally set in 1832 by Clark. In 1986 Bowden tied the corner. Many other surveyors have used the corner over the years. No other record of the corner was found.

CORNER EVIDENCE FOUND

I reset the monument after recent road construction. I retied the corner as shown below. Verified this location using EDM & GPS methods.

DESCRIPTION OF CORNER AND WITNESS MONUMENTS, references and accessories used to perpetuate the original or re-established location of this corner. Witnesses to monument location Bobby Sedgwick & Brad Digman & Shane Austin

SKETCH:



LEGEND

- Number 8 x 30" rebar set with Grant County Aluminum cap
- Number 4 x 24" Rebar set with red plastic "TIE" cap
- No. 6 rebar found

NOT TO SCALE



Austin Engineering LLC

4211 HWY 81 E, LANCASTER, WI 53813
PHONE 608-723-6363 FAX 608-723-6702

JOB NUMBER 07S241
FIELDBOOK: TDSR, 2709
G:\T4NR3W\04
H:\TIE\T4NR3W\17

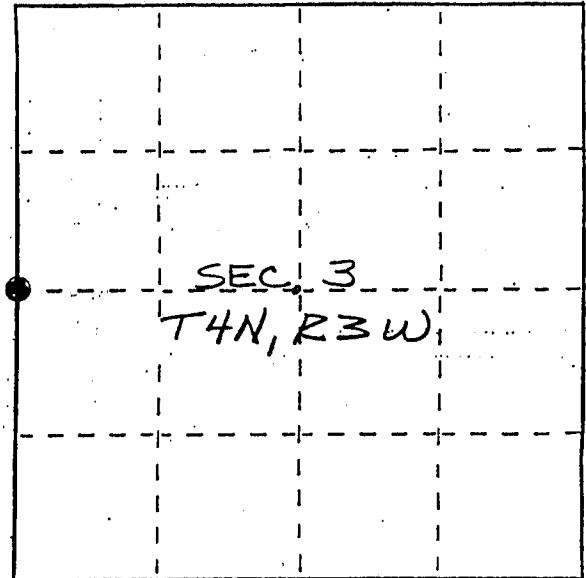
DRAWN BY: SW AUSTIN
APPROVED: LL AUSTIN

U. S. PUBLIC LAND SURVEY MONUMENT RECORD

INSTRUCTIONS: This record shall show the location of the corner and shall include all of the following nine elements (a through i).

- (a) Identify the corner by reference to the U.S. public land survey system.
 ● = Corner monument restored.

WEST 1/4 CORNER OF
 SECTION 3, T4N, R3W
 SOUTH LANCASTER TWP,
 GRANT COUNTY, WISC.

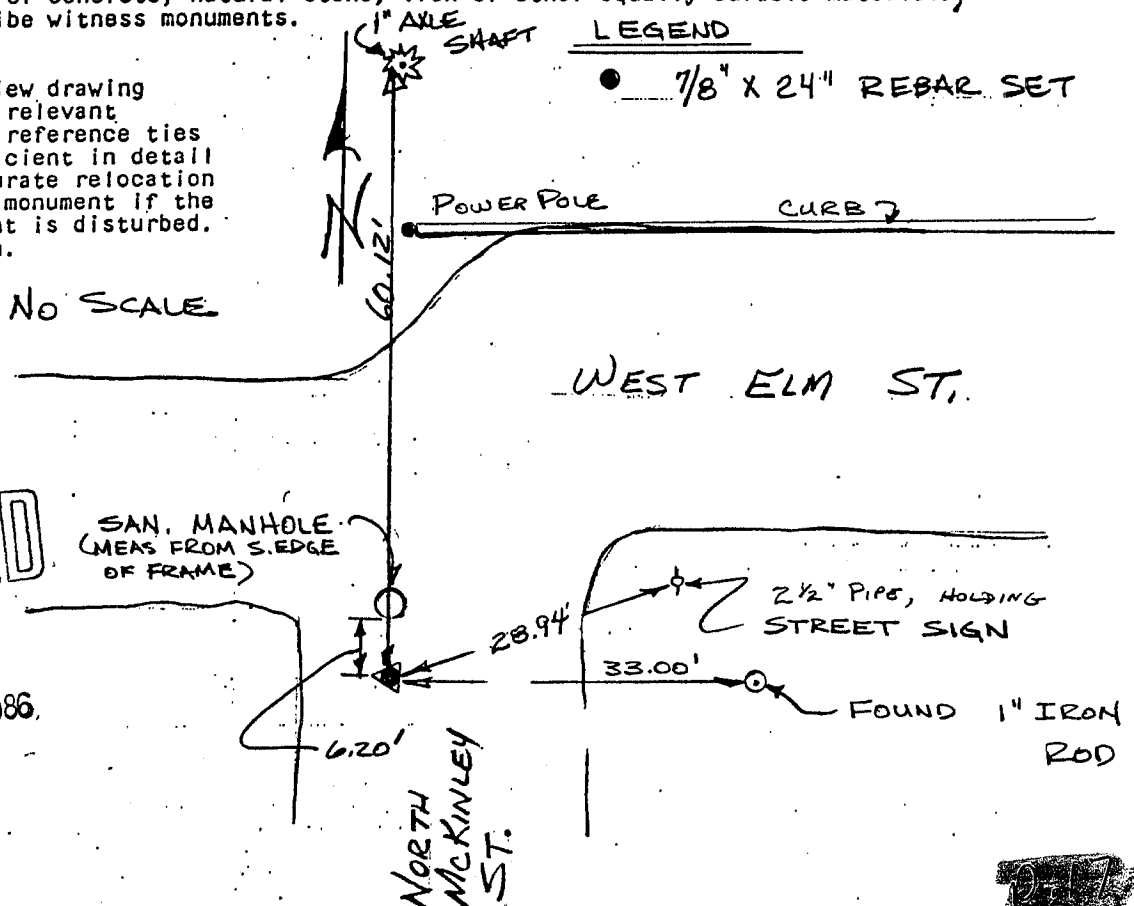


- (b) Describe any record evidence, monument evidence, occupational evidence, testimonial evidence or any other material evidence you considered, and whether the monument was found or placed.

RECORD EVIDENCE CONSIDERED WAS UNDATED SURVEY BY BRASHAW, SURVEY BY KROHN (1976), AND PARK ROAD SUB'N BY ORTH, MONUMENT SET FROM TIES TO THESE SURVEYS AND VERIFIED WITH OTHER UNRECORDED SURVEY STAKES, AS WELL AS, PROPORTIONATE MEASUREMENTS FROM AN EDM TRAVERSE OF THE AREA.

- (c) In the plan view drawing below, provide reference ties to at least 4 witness monuments, or, if the location is within a municipality, to at least 2 witness monuments. (Witness monuments shall be made of concrete, natural stone, iron or other equally durable material.) Describe witness monuments.

- (d) Show a plan view drawing depicting the relevant monuments and reference ties which is sufficient in detail to enable accurate relocation of the corner monument if the corner monument is disturbed. Indicate north.



RECEIVED

JUN 18 1986

217

