

# U.S. PUBLIC LAND SURVEY MONUMENT RECORD - GRANT COUNTY, WI

Section 4, Town 4 North Range 3 West, Town of South Lancaster

**CERTIFICATE:**

I, Aaron J. Austin, do hereby certify that the corner location on this record was determined by me and/or under my direct supervision and that this U.S. Public Land Survey Monument Record is correct and complete to the best of my knowledge and belief.

Dated this 1st day of August, 2013.

*Aaron J. Austin*  
 Aaron J. Austin, S-2922



● = CORNER LOCATION

GRANT COUNTY COORDINATES:  
 N=521716.82 E=812750.05

HISTORY OF CORNER ESTABLISHMENT:

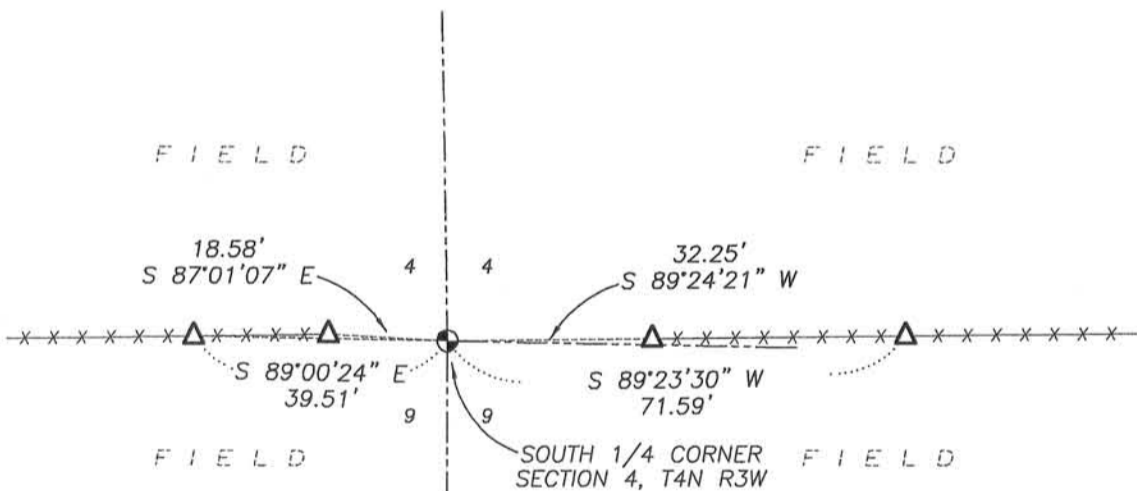
- 1833-Robert Clark set original corner.
- 1844-Samuel Wiltse shown the corner on a survey (Book A, Page 236)
- 1876-Joel Barber tied to this corner on a survey (Book D, Page 2)
- 1996 Michael LaRosa prepared a Survey Monument Record in conjunction with a survey (Book W, Page 93)
- 1997-Michael LaRosa tied to this corner on a survey (Book Y, Page 29)
- 2000-Bruce Bowden tied to this corner on a survey. (Book 7, Page 31)
- 2006-Larry Austin tied to this corner on C.S.M. No. 1252.
- 2011-Aaron Austin tied to this corner on C.S.M. No. 1606.
- 2012-Jim Rose shown the corner as reset on a ALTA/ACSM Survey. (Book 32, Page 45)
- 2012-Jim Rose shown the corner as reset on a ALTA/ACSM Survey. (Book 32, Page 64)

DESCRIPTION OF CORNER EVIDENCE FOUND:

I found a disturbed No. 7 rebar with cap as shown on the above mentioned on surveys by Jim Rose. It appears that recent tillage and/or excavation in the immediate area of this corner disturbed this monument. I found all four ties in place as set by Michael LaRosa. I reset the corner based upon these ties and verified it's location with the measurements to the North 1/4 corner and East 1/4 corner of Section 4 (C.S.M. No. 1606). This location was established by G.P.S. methods.

DESCRIPTION OF CORNER AND WITNESS MONUMENTS, references and accessories used to perpetuate the original or re-established location of this corner. Witnesses to corner location Shane Austin.

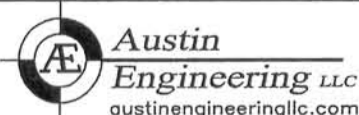
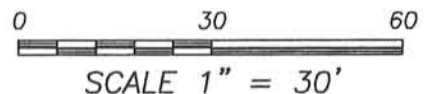
SKETCH:



**LEGEND**

- No. 8 x 30" rebar set with Grant County Aluminum Cap
- △ 1/2" Iron pipe found
- x-x- Approximate existing fence

Bearings are referenced to the Grant County Coordinate System (2011 adjustment) which was determined by G.P.S. observation.



4211 HWY 81 E, LANCASTER, WI 53813  
 PHONE: 608-723-6363 FAX: 608-723-6702

JOB NO: 13s095  
 G:\HMP\T4NR3W\04  
 H:\TIE\T4NR3W\28

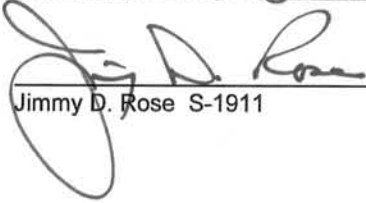
FIELDBOOK: TDSR  
 DRAWN BY: AJ AUSTIN  
 CREW: SW AUSTIN

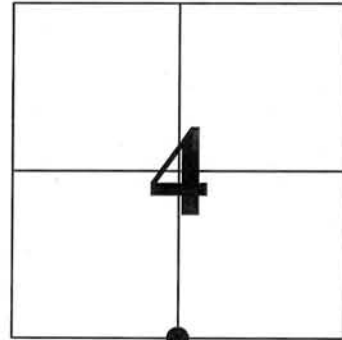
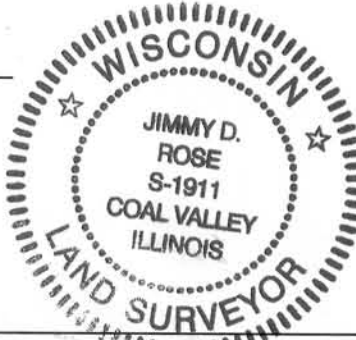
**U.S. PUBLIC LAND SURVEY MONUMENT RECORD - GRANT COUNTY, WI**  
 Section 4, Town 4 North Range 3 West, Town of South Lancaster

**CERTIFICATE:**

I, Jimmy D. Rose, do hereby certify that the corner location on this record was determined by me and/or under my direct supervision and that this U.S. Public Land Survey Monument Record is correct and complete to the best of my knowledge and belief.

Dated this 11<sup>th</sup> day of December, 2012.

  
 Jimmy D. Rose S-1911



● = CORNER LOCATION



**HISTORY OF CORNER ESTABLISHMENT:** CORNER LOCATION AND ACCESSORIES PREVIOUSLY ESTABLISHED BY MICHAEL LAROSA IN 1996.

**DESCRIPTION OF CORNER EVIDENCE FOUND:** FOUND THREE OF THE CORNER ACCESSORIES UNABLE TO FIND REMNANTS OF ANGLE IRON CORNER POST. SET MONUMENT AS SHOWN AND ADDED ADDITIONAL CORNER ACCESSORY.

**DESCRIPTION OF CORNER AND WITNESS MONUMENTS,** references and accessories used to perpetuate the original or re-established location of this corner.

**SKETCH:**

ANGLE IRON CORNER POST WAS OBLITERATED. NEW MONUMENT SET IN IT'S PLACE

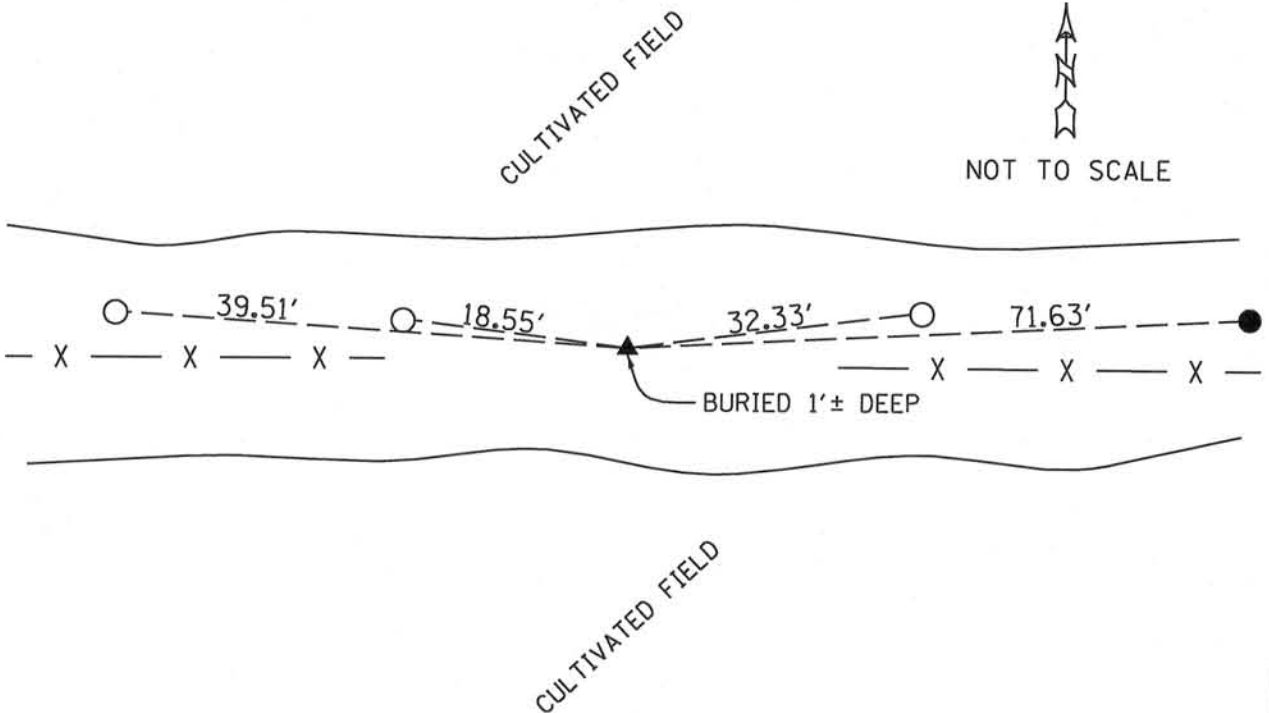
**LEGEND**

- ▲ SET 1" DIA. REBAR W/ GRANT COUNTY MONUMENT CAP
- SET 5/8" DIA. REBAR
- FOUND 1/2" DIA. REBAR

-X-X- FENCE



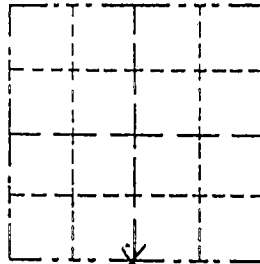
NOT TO SCALE



Survey Monument Record

CORNER NO. \_\_\_\_\_  
 SECTION 4  
 TOWN 4N  
 RANGE 3W

TYPE OF MONUMENT Angle Iron Post  
 STATE PLANE COORDINATES: N \_\_\_\_\_  
 E \_\_\_\_\_  
 ELEVATION — M.S.L. DATUM: \_\_\_\_\_  
 THETA ANGLE: \_\_\_\_\_  
 FIELD BOOK: 96-2  
 PAGE \_\_\_\_\_



LOCATION  
 (Indicated by "X")

- FOUND PERPETUATED LOCATION
- OBLITERATED EVIDENCE LOCATION
- LOST CORNER (RESTORED BY PROPORTIONATE METHODS)

BASIS FOR MONUMENT LOCATION

(Use reverse side if necessary)

Show info such as: History of corner, with reference to Vol. and pg.; dates, surveyor; exact description of monument replaced; if location computed, by taped or EDM traverse; landowner, remarks, etc.

This corner was noted in a survey by David Davis dated 3/6/1979. The corner location was intended to have been computed 3.5' south of a control point this distance north of the existing fence line. The wrong bearing was used hence the corner location shown does not fit the physical evidence in the area. The angle iron corner post was accepted as it fell on line with evidence to the north, west and east and at the appropriate distance from the SW corner.

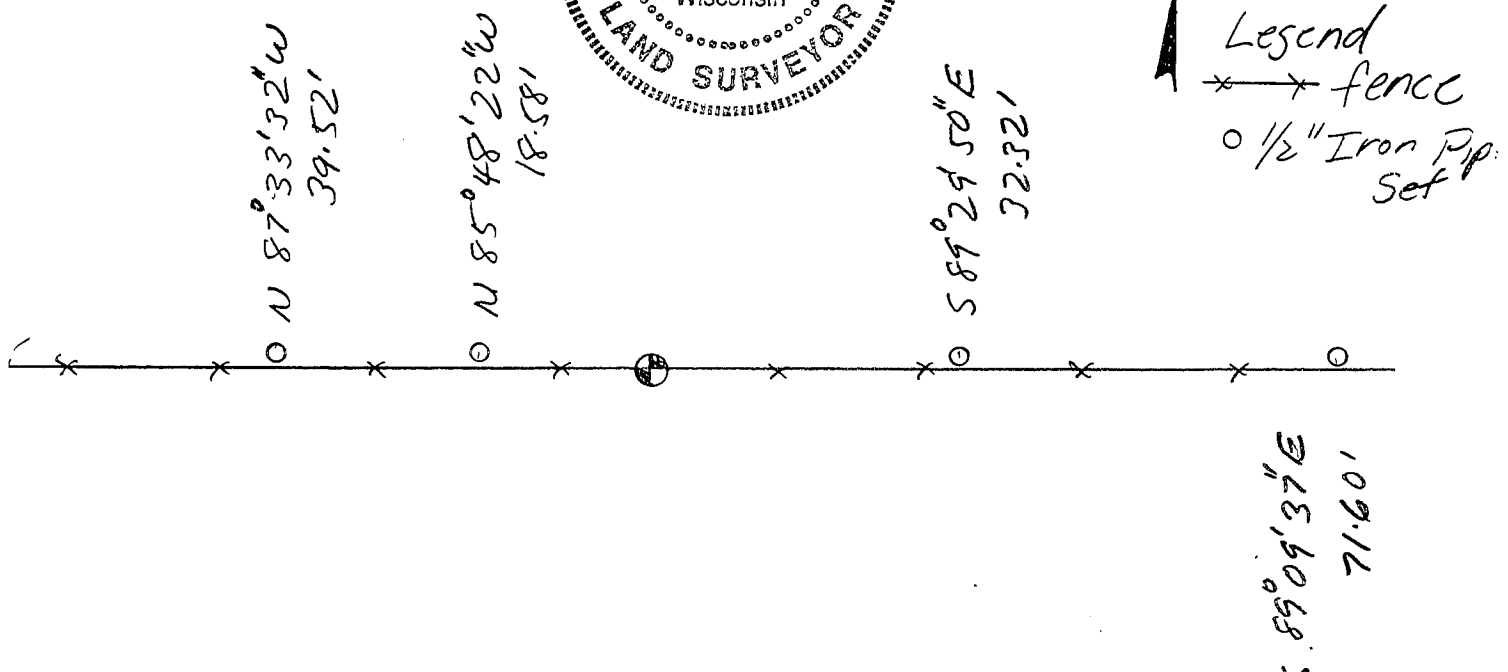
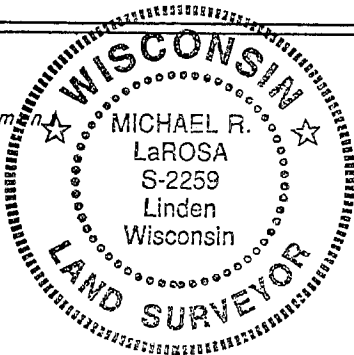
CERTIFIED CORRECT TO THE BEST OF MY KNOWLEDGE AND BELIEF

Michael R. LaRosa  
 Registered Land Surveyor

DATE: 4/18/1996

TIE SKETCH

Show at least (4) ties and monuments



1" = 20' ±  
 Legend  
 \* — \* fence  
 O 1/2" Iron Pipe Set