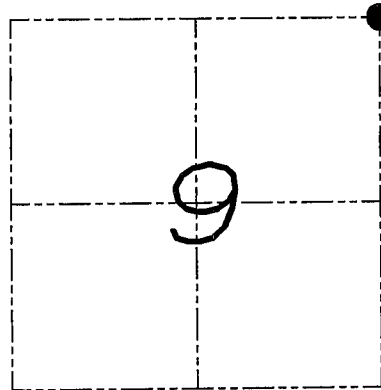


U.S. PUBLIC LAND SURVEY MONUMENT RECORD

Section 9, Town 4 North Range 3 West, Town of
South Lancaster, Grant County, Wisconsin

CERTIFICATE

I, Larry L. Austin, do hereby certify that the corner location on this record was determined by me and/or under my direct supervision and that this U.S. public land survey monument record is correct and complete to the best of my knowledge and belief.



● = CORNER LOCATION

Larry L. Austin
Larry L. Austin, S-1908-1903 date 4/10/08
WISCONSIN
LAND SURVEYOR
LANCASTER
WI

HISTORY OF CORNER

Corner was originally set in 1833 by Clark.
Many surveys have tied to the corner.

CORNER EVIDENCE FOUND

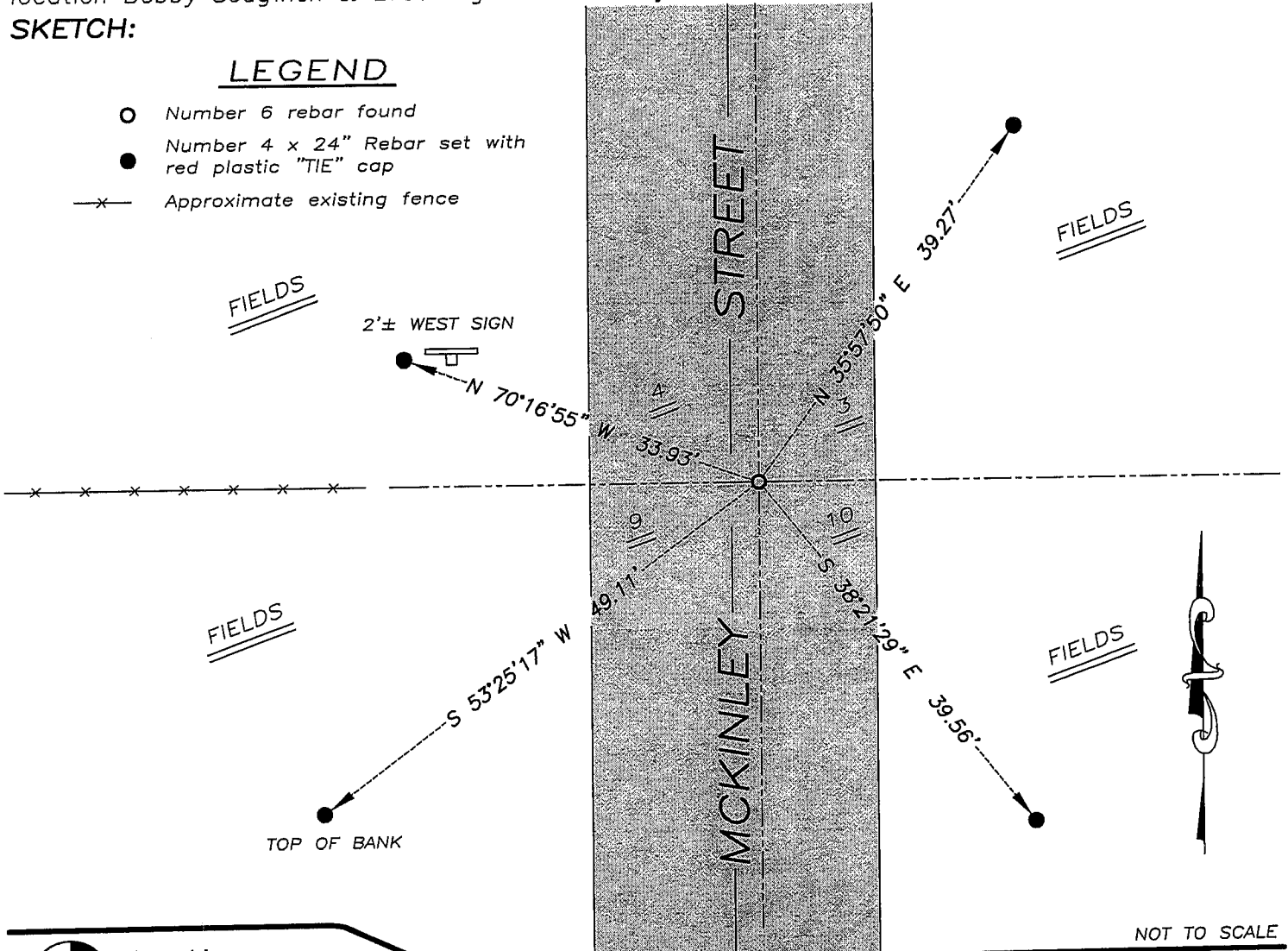
I found the No. 6 iron bar which has been recorded on various surveys. I accepted it's location after an EDM & GPS traverse of the area. I tied the corner as shown below.

DESCRIPTION OF CORNER AND WITNESS MONUMENTS, references and accessories used to perpetuate the original or re-established location of this corner. Witnesses to monument location Bobby Sedgwick & Brad Digman & Shelby Blindert

SKETCH:

LEGEND

- Number 6 rebar found
- Number 4 x 24" Rebar set with red plastic "TIE" cap
- x- Approximate existing fence



Austin
Engineering LLC

4211 HWY 81 E, LANCASTER, WI 53813
PHONE 608-723-6363 FAX 608-723-6702

JOB NUMBER 08S023
FIELDBOOK: TDSR, 2707
G:\T4NR3W\17
H:\TIE\T4NR3W\27

DRAWN BY: SW AUSTIN
APPROVED: LL AUSTIN