

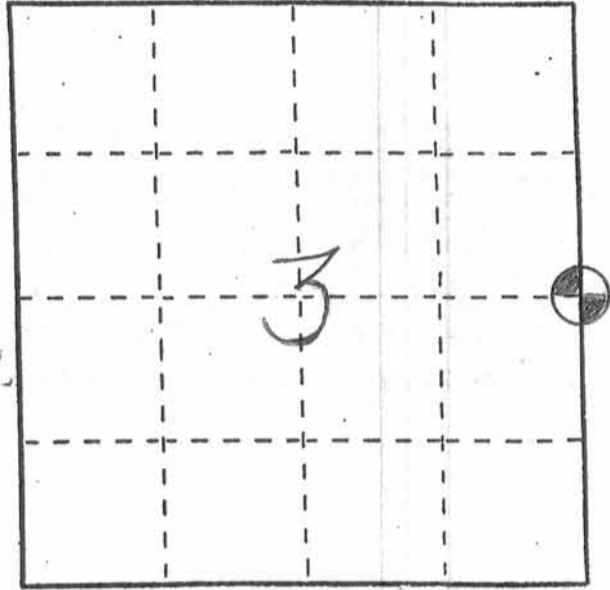
# U. S. PUBLIC LAND SURVEY MONUMENT RECORD

INSTRUCTIONS: This record shall show the location of the corner and shall include all of the following nine elements (a through i).

(a) Identify the corner by reference to the U.S. public land survey system.

⊕ = Corner monument restored.

EAST 1/4 CORNER OF  
SECTION 3, TOWN 4 NORTH,  
RANGE 3 WEST, CITY OF  
LANCASTER, GRANT COUNTY,  
WISCONSIN.



WGS 1984 (2011) USING GEOID 09  
WISCONS

N 524350.51  
E 820639.96  
1070.90

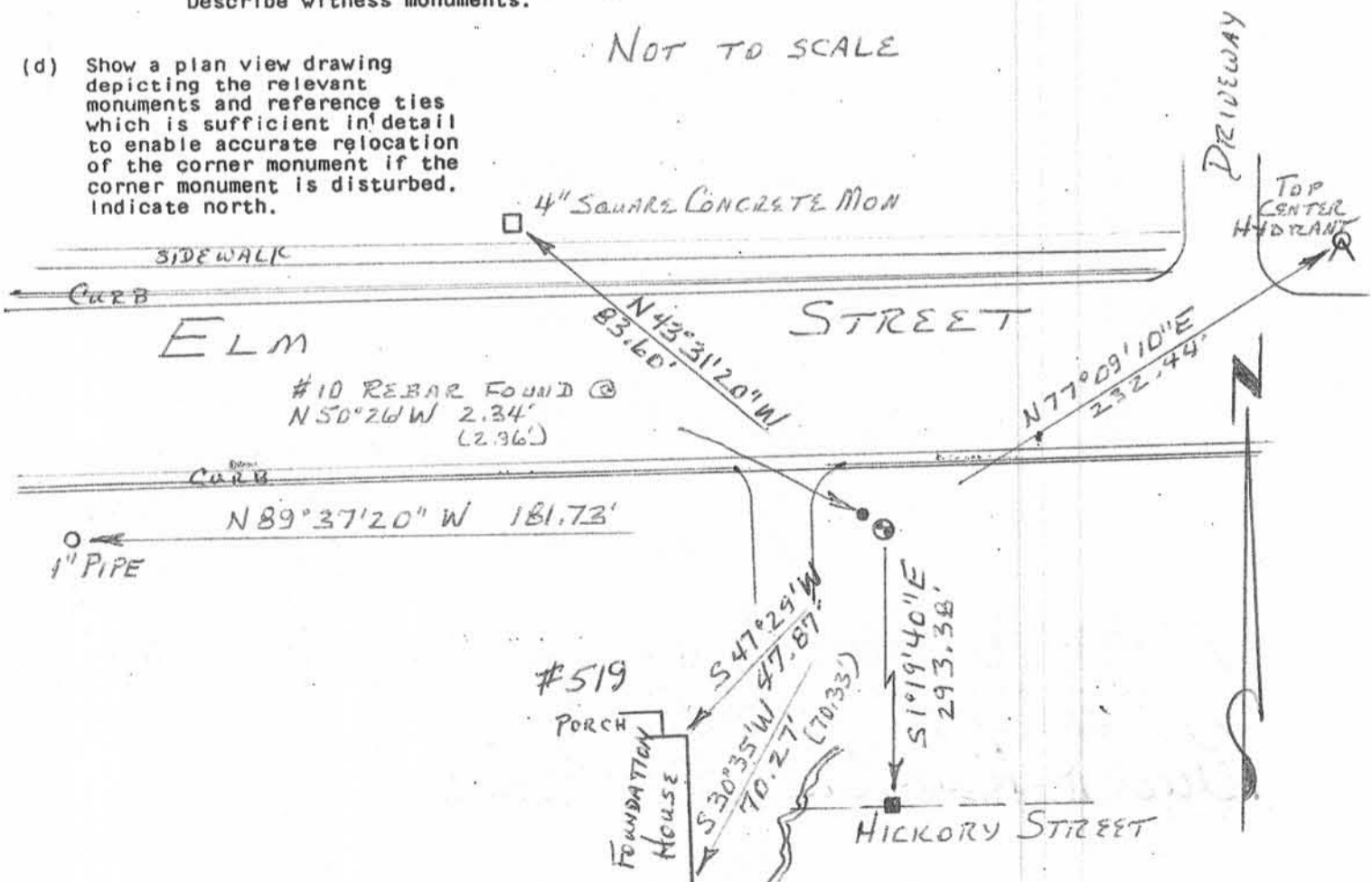
(b) Describe any record evidence, monument evidence, occupational evidence, testimonial evidence or any other material evidence you considered, and whether the monument was found or placed.

STONE MONUMENT FOUND AS SHOWN ON RICHARD MARKS TIE SHEET DATED NOV., 1988.

(c) In the plan view drawing below, provide reference ties to at least 4 witness monuments, or, if the location is within a municipality, to at least 2 witness monuments. (Witness monuments shall be made of concrete, natural stone, iron or other equally durable material) Describe witness monuments.

(d) Show a plan view drawing depicting the relevant monuments and reference ties which is sufficient in detail to enable accurate relocation of the corner monument if the corner monument is disturbed. Indicate north.

NOT TO SCALE



- (e) Describe any material discrepancy between the location of the corner as restored or reestablished and the location of that corner as previously restored or reestablished by distance and direction. Show the discrepancy on the plan view drawing under (d), above. Show the distances between the corner as previously restored or reestablished and (1) the corner as restored or reestablished, and (2) to at least 2 of the witness monuments shown on the drawing in (d), above.

THE #7 REBAR I SET IN 1986 IS GONE AND A #10 WAS FOUND CLOSE TO THAT LOCATION - I THANK MR. MARKS FOR FINDING AND PERPETUATING THE STONE MONUMENT.

- (f) Was the corner restored through acceptance of (1) an obliterated evidence location, or, (2) a found perpetuated location?

(2) A FOUND PERPETUATED LOCATION

- (g&h) Was the corner reestablished through lost corner proportionate methods? If so, show the method, including the directions and distances to other public land survey corners used as evidence or used for proportioning in determining the corner location?

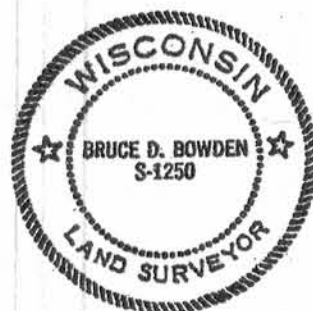
No

- (i) I, BRUCE D. BOWDEN,  
(type or print name) certify that the corner location shown on this record was determined by me or under my direction and control and that this U.S. Public Land Survey Monument Record is correct and complete to the best of my knowledge and belief.

Signature

Date

Affix Land Surveyor Seal



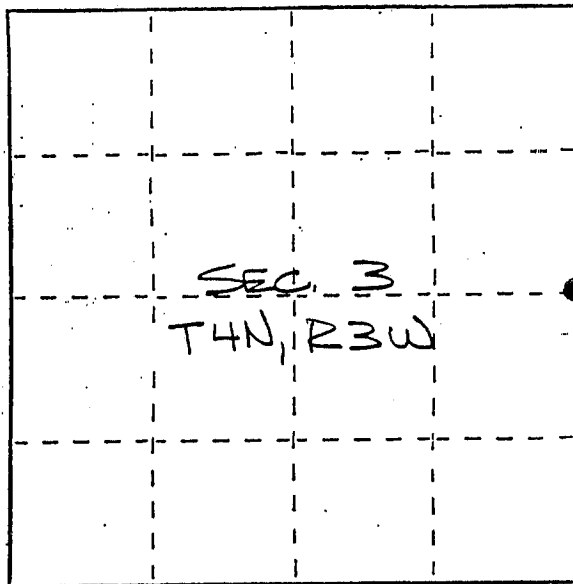
Bruce D. Bowden Oct 13, 2013

# U. S. PUBLIC LAND SURVEY MONUMENT RECORD

**INSTRUCTIONS:** This record shall show the location of the corner and shall include all of the following nine elements (a through i).

- (a) Identify the corner by reference to the U.S. public land survey system.  
 ● = Corner monument restored.

?  
 EAST 1/4 CORNER  
 OF SEC 3, T4N, R3W  
 SOUTH LANCASTER TWP.  
 GRANT CO., WISC.



- (b) Describe any record evidence, monument evidence, occupational evidence, testimonial evidence or any other material evidence you considered, and whether the monument was found or placed.

MONUMENT SET FROM TIES TO SURVEYS BY DAVID KROHN, JOHN CJEKA AND JAMES OLSON AND EVIDENCE OF IRON STAKES AT LOT CORNERS OF THE ORIGINAL PLAT OF LANCASTER, THOUGH UNRECORDED, WERE FOUND TO VERIFY THIS LOCATION.

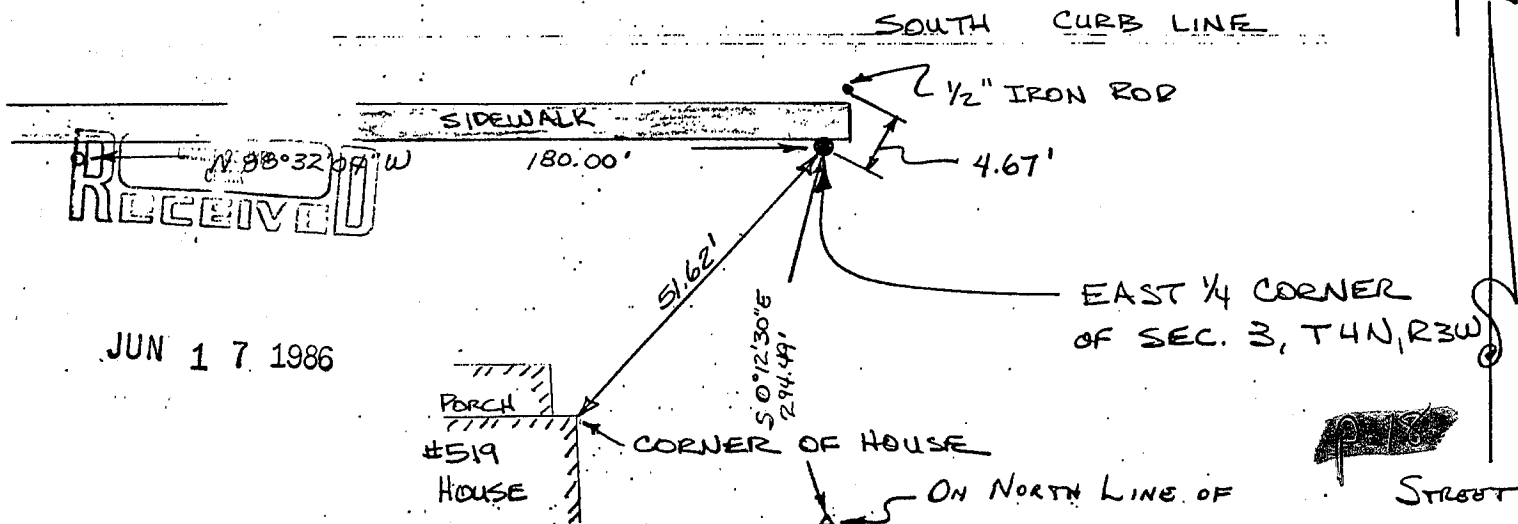
- (c) In the plan view drawing below, provide reference ties to at least 4 witness monuments, or, if the location is within a municipality, to at least 2 witness monuments. (Witness monuments shall be made of concrete, natural stone, iron or other equally durable material.) Describe witness monuments.

- (d) Show a plan view drawing depicting the relevant monuments and reference ties which is sufficient in detail to enable accurate relocation of the corner monument if the corner monument is disturbed. Indicate north.

**LEGEND**

- 7/8" x 24" REBAR SET
- EXISTING 1" PIPE
- △ EXISTING 1/2" ROD

EAST ELM STREET.



RECEIVED

JUN 17 1986

PLS

(e) Describe any material discrepancy between the location of the corner as restored or reestablished and the location of that corner as previously restored or reestablished by distance and direction. Show the discrepancy on the plan view drawing under (d) above. Show the distances between the corner as previously restored or reestablished and (1) the corner as restored or reestablished, and (2) to at least 2 of the witness monuments shown on the drawing in (d), above.

NONE

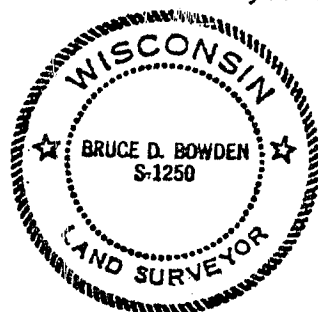
(f) Was the corner restored through acceptance of (1) an obliterated evidence location, or, (2) a found perpetuated location?

(2) A FOUND PERPETUATED LOCATION.

(g&h) Was the corner reestablished through lost corner proportionate methods? If so, show the method, including the directions and distances to other public land survey corners used as evidence or used for proportioning in determining the corner location?

No.

Affix Land Surveyor Seal



(i) I, BRUCE D. BOWDEN  
(type or print name) certify that the corner location shown on this record was determined by me or under my direction and control and that this U.S. Public Land Survey Monument Record is correct and complete to the best of my knowledge and belief.

Bruce D. Bowden  
Signature

June 14, 1986  
Date

# U.S. PUBLIC LAND SURVEY MONUMENT RECORD

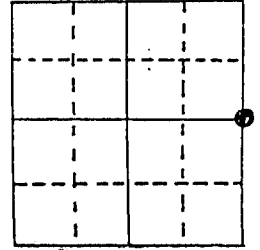
Note: This form is intended and designed to fulfill all requirements of Wisconsin Administrative Code, Chapter A-E 5.02, U.S. Public Land Survey Monument Record (3) (a) (b) (c) (d) (e) (f) (g) (h) (i). An additional sheet may be added if necessary to conform with said requirements.

(a) Corner location: Township 4 North

Range 3 East West

Town/City/Village Lancaster

County Grant



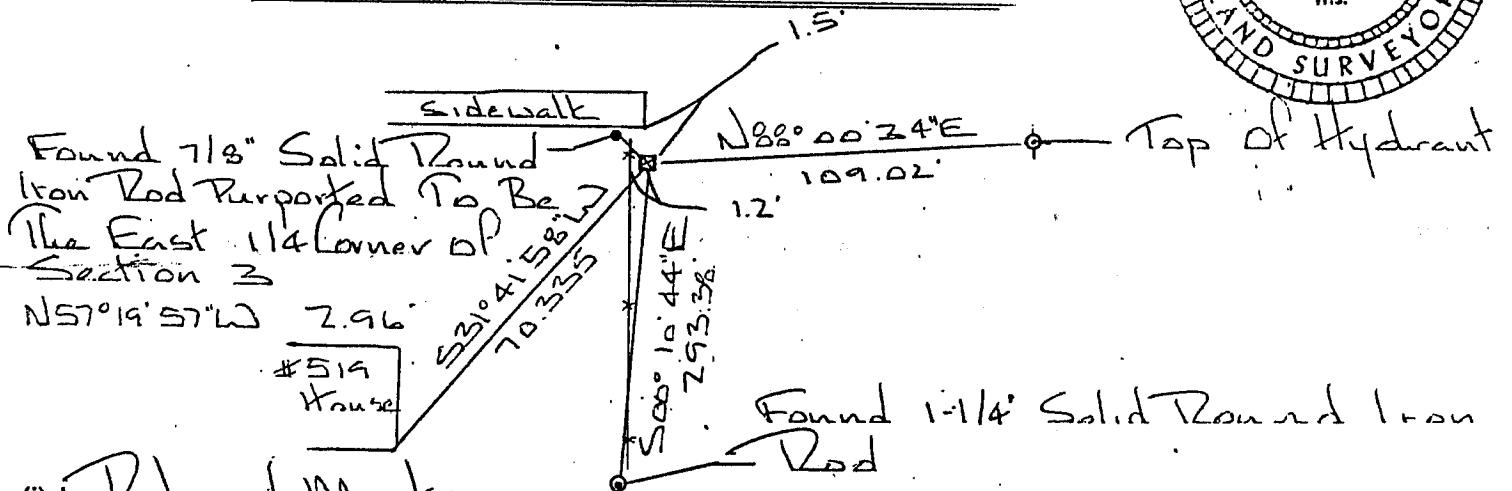
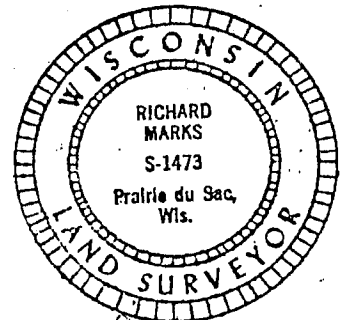
Section 3

(b) (f) (g) (h) Description of monument found at this corner and if it was accepted, state all evidence (material, testimonial, occupational, plats, records, other monuments) used as a basis for accepting. If not accepted or if nothing was found, state evidence used as basis for establishing location. If reestablished through lost corner proportionate methods, indicate all monuments, distances and directions used to establish.

*Found 5"x5" Cut Stone With A Cross On Top. Shown On Survey By Homer Ralph Dated 10/16/1975*

(c) (d) (e) Plan view of corner with ties to at least 4 witness monuments. If in disagreement with previously established corner, show the distances between the two corners and also indicate the ties to the disputed corner.

East Elm Street



(i) Richard Marks  
 (type or print name) certify that the corner location on this record was determined by me or under my direction and control and that this U.S. Public Land Survey Monument Record is correct and complete to the best of my knowledge and belief.

Affix seal here

*[Handwritten Signature]*  
 Signature Date 11/28/88

*[Handwritten Mark]*