

# U.S. PUBLIC LAND SURVEY MONUMENT RECORD

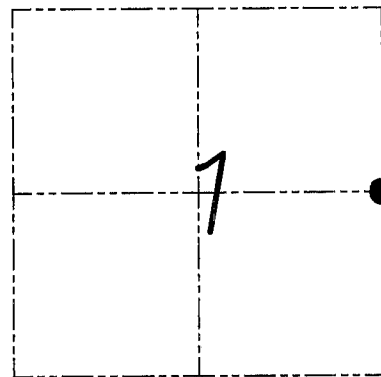
Section 1, Town 4 North Range 3 West, Town of South Lancaster, Grant County, Wisconsin

## CERTIFICATE

I, Larry L. Austin, do hereby certify that the corner location on this record was determined by me and/or under my direct supervision and that this U.S. public land survey monument record is correct and complete to the best of my knowledge and belief.



*Larry L. Austin*  
 Larry L. Austin, S 1903 WI date 6.25.08



● = CORNER LOCATION

## HISTORY OF CORNER

Corner was originally set by Lyon.  
 No other record of the corner was found.

## CORNER EVIDENCE FOUND

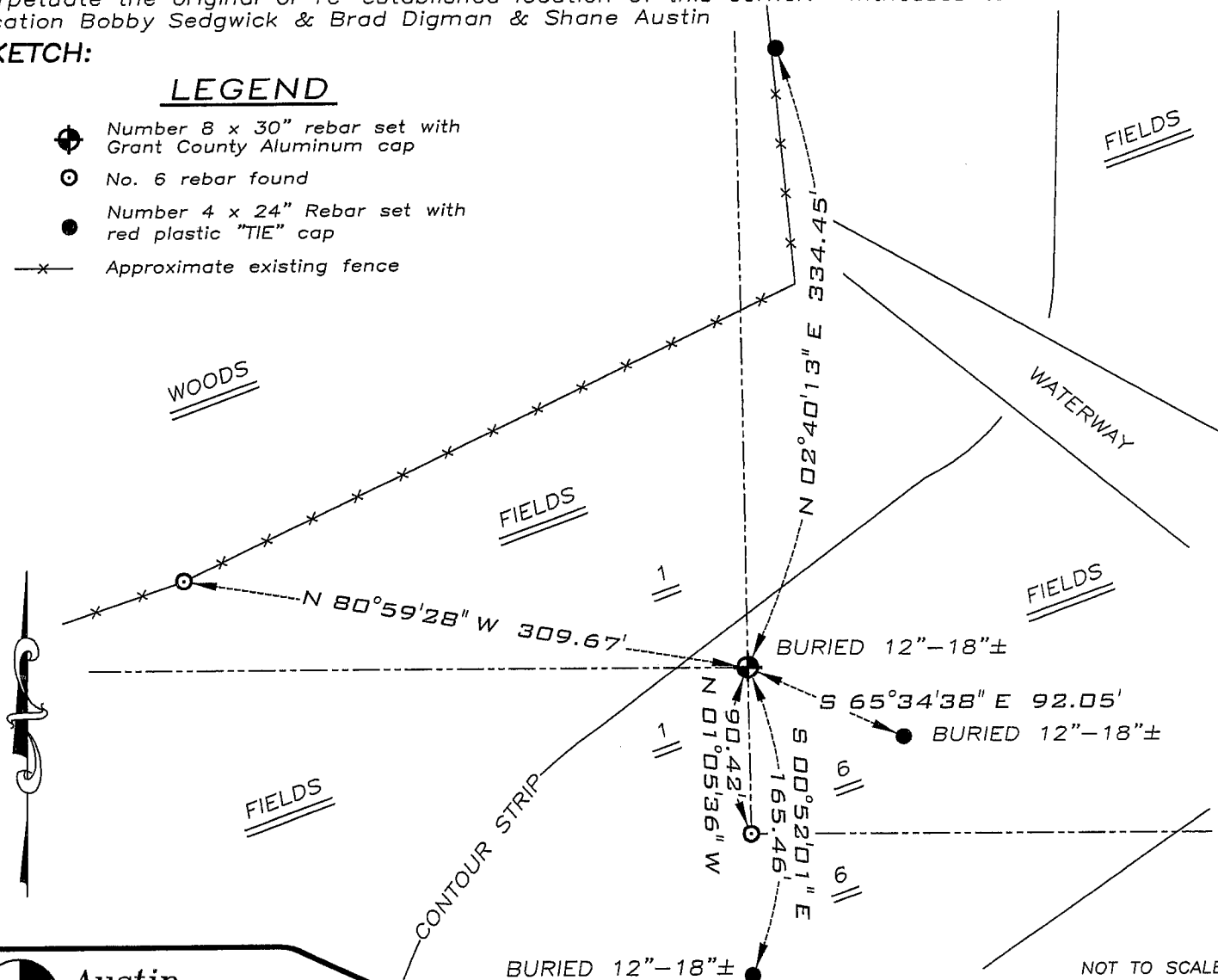
I reset the corner at the recorded offset from the West 1/4 corner of Section 6, T4N R2W. Verified this location using EDM & GPS methods.

**DESCRIPTION OF CORNER AND WITNESS MONUMENTS,** references and accessories used to perpetuate the original or re-established location of this corner. Witnesses to monument location Bobby Sedgwick & Brad Digman & Shane Austin

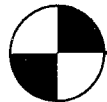
## SKETCH:

### LEGEND

- Number 8 x 30" rebar set with Grant County Aluminum cap
- No. 6 rebar found
- Number 4 x 24" Rebar set with red plastic "TIE" cap
- x- Approximate existing fence



NOT TO SCALE



**Austin Engineering LLC**

4211 HWY 81 E, LANCASTER, WI 53813  
 PHONE 608-723-6363 FAX 608-723-6702

JOB NUMBER 08S029-LENZ ESTATE  
 FIELDBOOK: TDSR, 2802  
 G:\T5NR2W\32  
 H:\TIE\T4NR3W\20

DRAWN BY: SW AUSTIN  
 APPROVED: LL AUSTIN

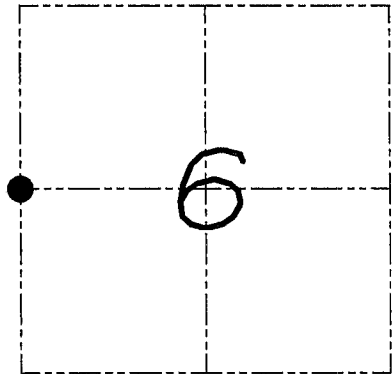
# U.S. PUBLIC LAND SURVEY MONUMENT RECORD

Section 6, Town 4 North Range 2 West, Town of Ellenboro, Grant County, Wisconsin

## CERTIFICATE

I, Larry L. Austin, do hereby certify that the corner location on this record was determined by me and/or under my direct supervision and that this U.S. public land survey monument record is correct and complete to the best of my knowledge and belief.

*Larry L. Austin*  
 Larry L. Austin, Surveyor  
 Wisconsin  
 25.08  
 date



● = CORNER LOCATION

## HISTORY OF CORNER

In 1850 Stuntz tied to the corner with no mention of monument. In 1999 Buck set a No. 6 rebar at this location. No other record of the corner was found.

## CORNER EVIDENCE FOUND

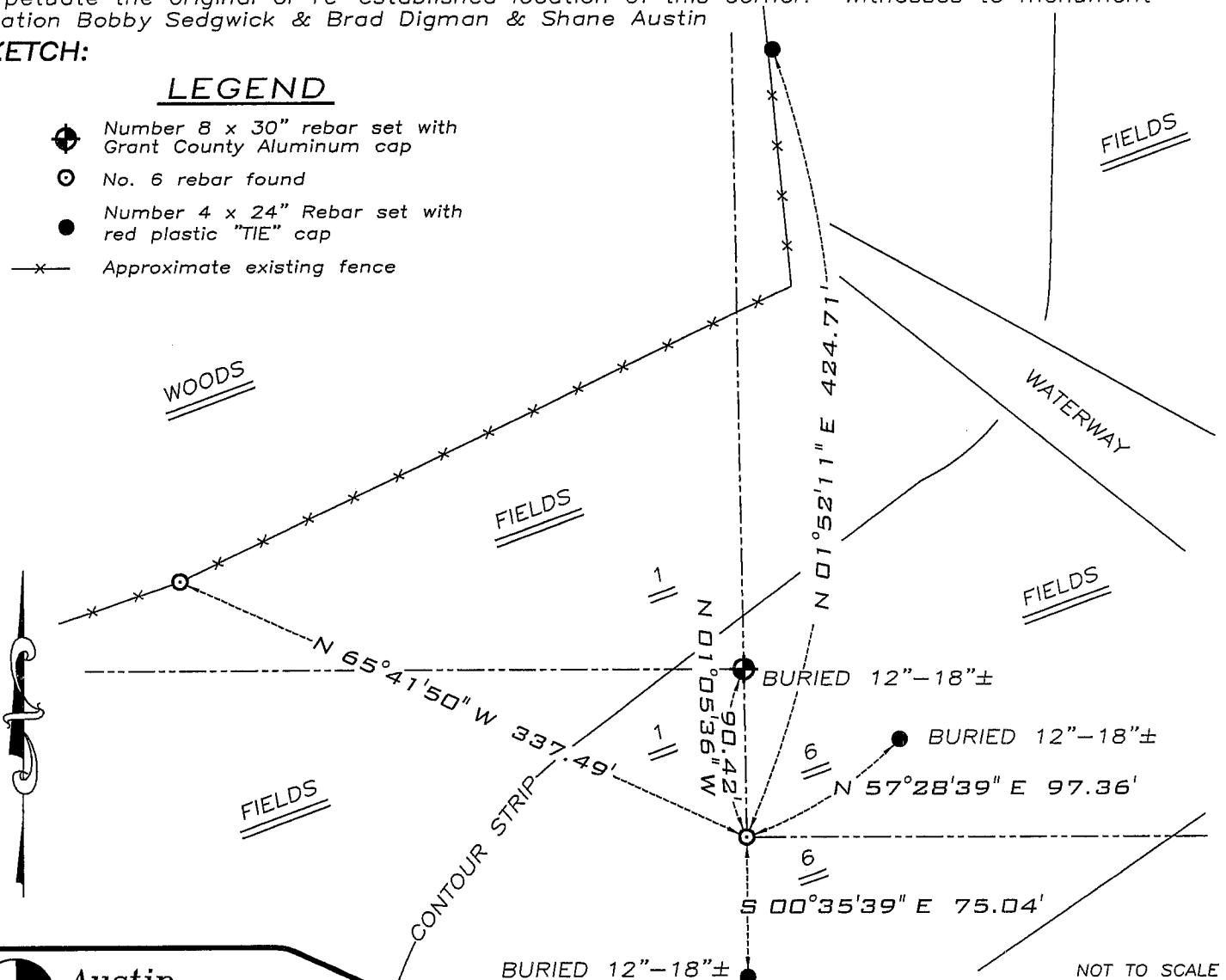
I found and accepted the existing No. 6 rebar after an EDM & GPS traverse of the area.

DESCRIPTION OF CORNER AND WITNESS MONUMENTS, references and accessories used to perpetuate the original or re-established location of this corner. Witnesses to monument location Bobby Sedgwick & Brad Digman & Shane Austin

## SKETCH:

### LEGEND

- Number 8 x 30" rebar set with Grant County Aluminum cap
- No. 6 rebar found
- Number 4 x 24" Rebar set with red plastic "TIE" cap
- x- Approximate existing fence



NOT TO SCALE



**Austin Engineering LLC**

4211 HWY 81 E, LANCASTER, WI 53813  
 PHONE 608-723-6363 FAX 608-723-6702

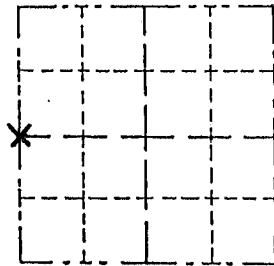
JOB NUMBER 08S029-LENZ ESTATE  
 FIELDBOOK: TDSR, 2802  
 G:\T5NR2W\32  
 H:\TIE\T4NR2W\14

DRAWN BY: SW AUSTIN  
 APPROVED: LL AUSTIN

Survey Monument Record

CORNER NO. \_\_\_\_\_  
 SECTION 6  
 TOWN 4 NORTH  
 RANGE 2 WEST

TYPE OF MONUMENT 3/4" X 24" Iron Rod  
 STATE PLANE COORDINATES: N \_\_\_\_\_  
 E \_\_\_\_\_  
 ELEVATION — M.S.L. DATUM: \_\_\_\_\_  
 THETA ANGLE: \_\_\_\_\_  
 FIELD BOOK: \_\_\_\_\_  
 PAGE \_\_\_\_\_



BASIS FOR MONUMENT LOCATION

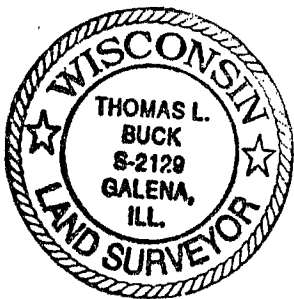
(Use reverse side if necessary)

Show info such as: History of corner, with reference to Vol. and pg., dates, surveyor; exact description of monument replaced; if location computed, by taped or EDM traverse; landowner, remarks, etc.

LOCATION  
 (Indicated by "X")

- FOUND PERPETUATED LOCATION
- OBLITERATED EVIDENCE LOCATION
- LOST CORNER (RESTORED BY PROPORTIONATE METHODS)

I FOUND NO HISTORY OF THIS CORNER SINCE THE ORIGINAL GOVERNMENT SURVEY. I USED A BEST FIT ON A N-S FENCE LINE FOR MY EAST-WEST LOCATION AND I USED A PROPORTIONED DISTANCE FROM THE SW CORNER FOR MY NORTH-SOUTH POSITION. AFTER AN E.D.M. TRAVERSE & LOCATION SURVEY OF THE AREA.

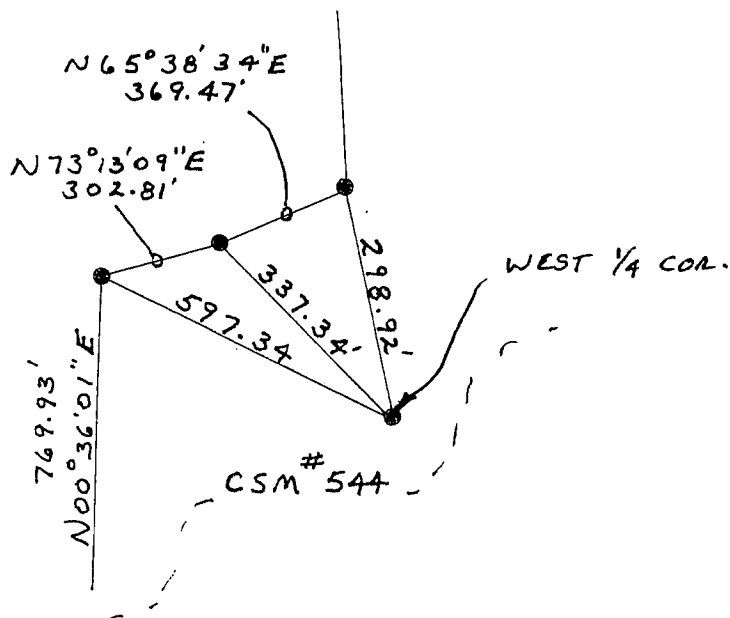


CERTIFIED CORRECT TO THE BEST OF MY KNOWLEDGE AND BELIEF

Thomas Buck  
 Registered Land Surveyor  
 DATE: 8/13/99

TIE SKETCH

Show at least three (3) ties and monument



No SCALE

● = 3/4" X 24" Iron Rod