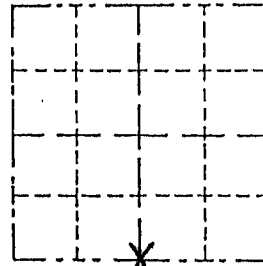


Survey Monument Record

TYPE OF MONUMENT 3/4" X 24" IRON ROD  
 STATE PLANE COORDINATES: N \_\_\_\_\_  
 E \_\_\_\_\_  
 ELEVATION — M.S.L. DATUM: \_\_\_\_\_  
 THETA ANGLE: \_\_\_\_\_  
 FIELD BOOK: \_\_\_\_\_  
 PAGE \_\_\_\_\_

CORNER NO. \_\_\_\_\_  
 SECTION 1  
 TOWN 4 NORTH  
 RANGE 3 WEST



LOCATION  
 (Indicated by "X")

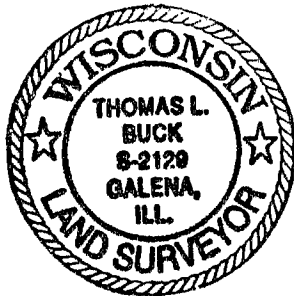
- FOUND PERPETUATED LOCATION
- OBLITERATED EVIDENCE LOCATION
- LOST CORNER (RESTORED BY PROPORTIONATE METHODS)

BASIS FOR MONUMENT LOCATION

(Use reverse side if necessary)

Show info such as: History of corner, with reference to Vol. and pg., dates, surveyor; exact description of monument replaced; if location computed, by taped or EDM traverse; landowner, remarks, etc.

I FOUND NO HISTORY OF THIS CORNER SINCE THE ORIGINAL GOVERNMENT SURVEY. I SET THIS CORNER BY USING THE BEST FIT OF A NORTH-SOUTH FENCE ALONG THE N-S 1/4 LINE FOR MY EAST-WEST LOCATION AND I INTERSECTED A STRAIGHT LINE BETWEEN THE SW. CORNER AND THESE. CORNER. AFTER AN E.D.M. TRAVERSE AND A LOCATION SURVEY OF THE AREA.



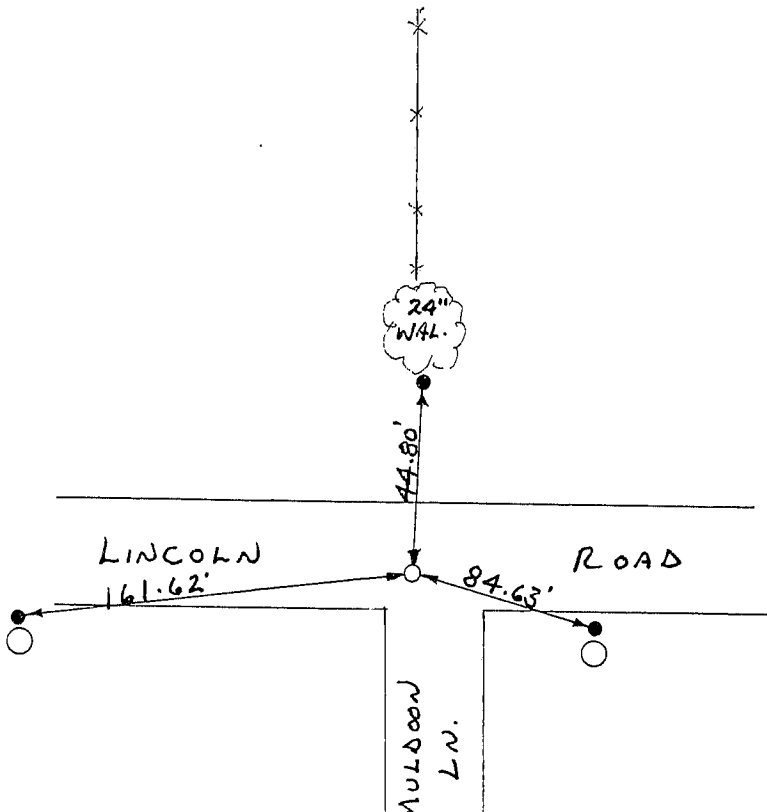
CERTIFIED CORRECT TO THE BEST OF MY KNOWLEDGE AND BELIEF

Thomas Buck  
 Registered Land Surveyor

DATE: 8/13/99

TIE SKETCH

Show at least three (3) ties and monument



NO SCALE

- = EXISTING POWER POLE
- = 3/4" X 24" IRON ROD
- = 1/2" IRON ROD
- \*-\* = EXISTING FENCE