

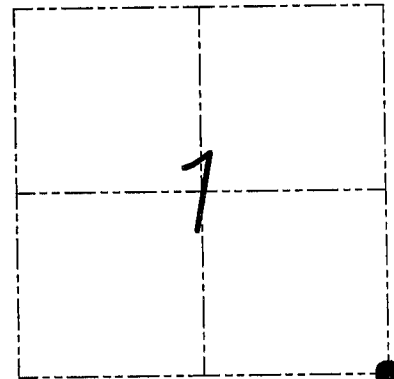
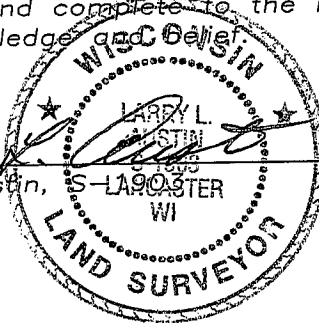
U.S. PUBLIC LAND SURVEY MONUMENT RECORD

Section 1, Town 4 North Range 3 West, Town of South Lancaster, Grant County, Wisconsin

CERTIFICATE

I, Larry L. Austin, do hereby certify that the corner location on this record was determined by me and/or under my direct supervision and that this U.S. public land survey monument record is correct and complete to the best of my knowledge and belief.

Larry L. Austin
 Larry L. Austin, S-LANCASTER WI date 6.25.08



● = CORNER LOCATION

HISTORY OF CORNER

Corner was originally set by Lyon. In 1999 Thomas Buck set a P.K. nail in an occupied fence corner. No recent record of the corner was found.

CORNER EVIDENCE FOUND

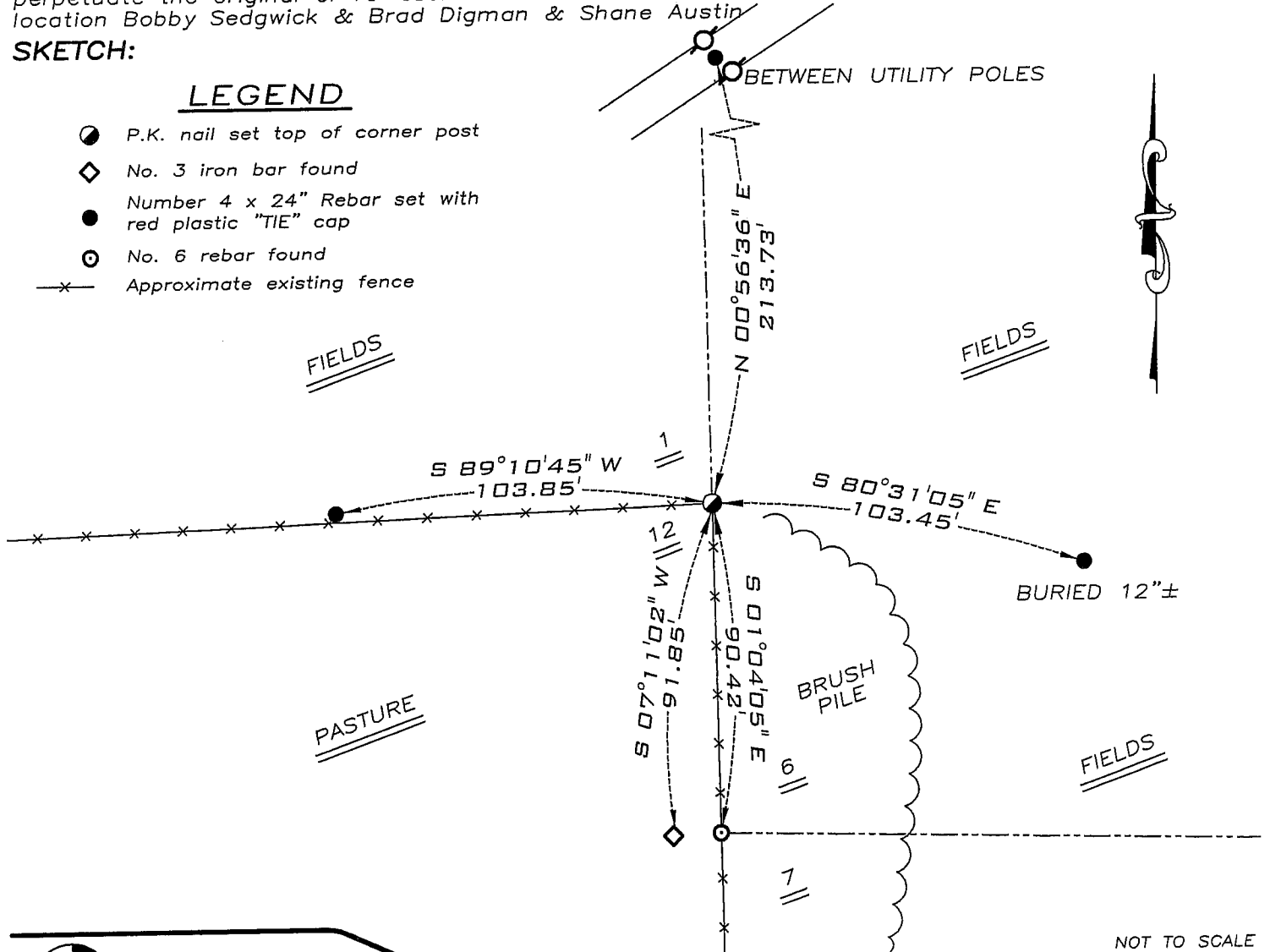
I reset the corner at the recorded Thomas Buck location. Verified this location using EDM & GPS methods.

DESCRIPTION OF CORNER AND WITNESS MONUMENTS, references and accessories used to perpetuate the original or re-established location of this corner. Witnesses to monument location Bobby Sedgwick & Brad Digman & Shane Austin

SKETCH:

LEGEND

- P.K. nail set top of corner post
- ◇ No. 3 iron bar found
- Number 4 x 24" Rebar set with red plastic "TIE" cap
- No. 6 rebar found
- x- Approximate existing fence



NOT TO SCALE



Austin Engineering LLC

4211 HWY 81 E, LANCASTER, WI 53813
 PHONE 608-723-6363 FAX 608-723-6702

JOB NUMBER 08S029-LENZ ESTATE
 FIELDBOOK: TDSR, 2802 DRAWN BY: SW AUSTIN
 G:\T5NR2W\32 APPROVED: LL AUSTIN
 H:\TIE\T4NR3W\21

Survey Monument Record

CORNER NO. _____

SECTION 1

TOWN 4 NORTH

RANGE 3 WEST

TYPE OF MONUMENT P.K. NAIL IN CONCRETE

STATE PLANE COORDINATES: N _____

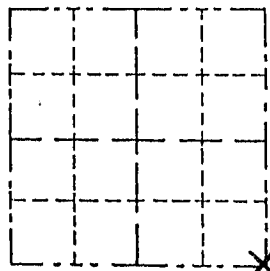
E _____

ELEVATION — M.S.L. DATUM: _____

THETA ANGLE: _____

FIELD BOOK: _____

PAGE _____



LOCATION

(Indicated by "X")

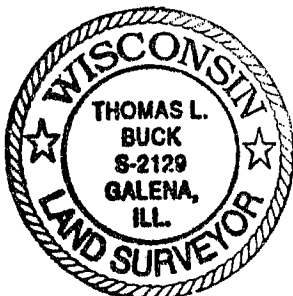
- FOUND PERPETUATED LOCATION
- OBLITERATED EVIDENCE LOCATION
- LOST CORNER (RESTORED BY PROPORTIONATE METHODS)

BASIS FOR MONUMENT LOCATION

(Use reverse side if necessary)

Show info such as: History of corner, with reference to Vol. and pg., dates, surveyor; exact description of monument replaced; if location computed, by taped or EDM traverse; landowner, remarks, etc.

I FOUND NO HISTORY OF THIS CORNER SINCE THE ORIGINAL GOVERNMENT SURVEY. I SET THIS CORNER AT THE OCCUPIED FENCE CORNER WHICH FIT WELL WITH ALL THE OTHER PHYSICAL EVIDENCE. AFTER AN E.D.M. TRAVERSE AND LOCATION SURVEY OF THE AREA.



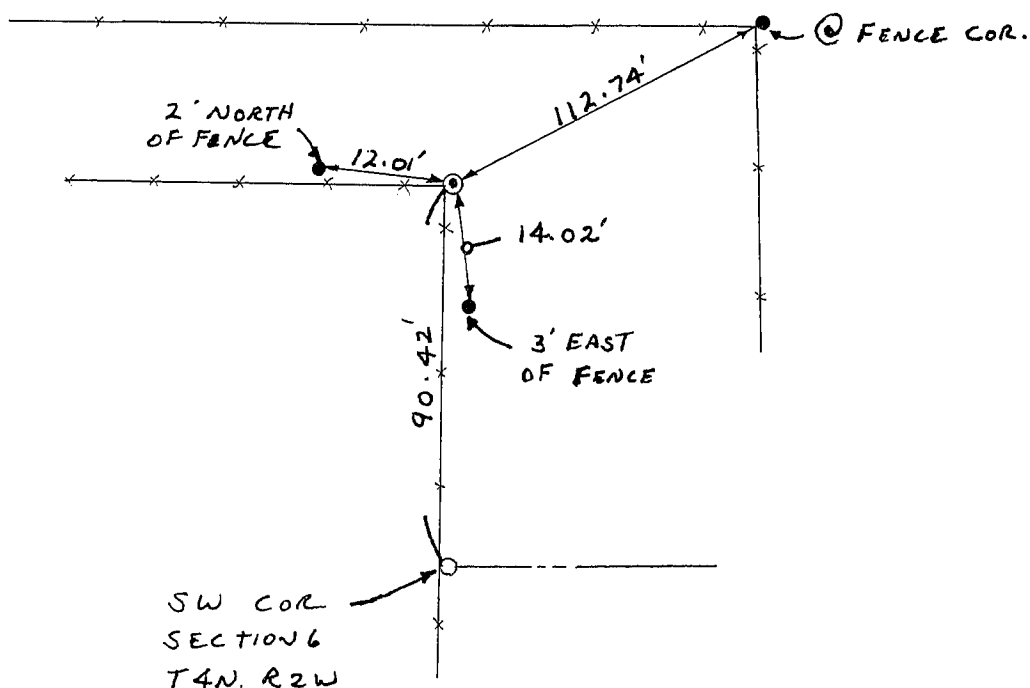
CERTIFIED CORRECT TO THE BEST OF MY KNOWLEDGE AND BELIEF

Thomas Buck
Registered Land Surveyor

DATE: 8/13/99

TIE SKETCH

Show at least three (3) ties and monument



NO SCALE

- ⊙ = P.K. NAIL IN CONC.
- = 3/4" X 24" IRON ROD
- = 1/2" IRON ROD
- *—*— = EXISTING FENCE

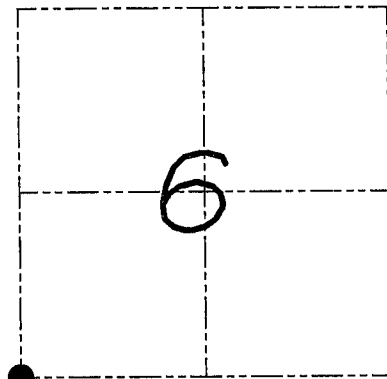
U.S. PUBLIC LAND SURVEY MONUMENT RECORD

Section 6, Town 4 North Range 2 West, Town of Ellenboro, Grant County, Wisconsin

CERTIFICATE

I, Larry L. Austin, do hereby certify that the corner location on this record was determined by me and/or under my direct supervision and that this U.S. public land survey monument record is correct and complete to the best of my knowledge and belief.

Larry L. Austin
 Larry L. Austin, Surveyor
 Wisconsin
 1903
 Lancaster WI
 025.08
 date



● = CORNER LOCATION

HISTORY OF CORNER

Corner was originally set in the third quarter of 1832 by Clark. In 1859 Stuntz tied to the corner. In 1999 Buck set a No. 6 rebar. No other record of the corner was found.

CORNER EVIDENCE FOUND

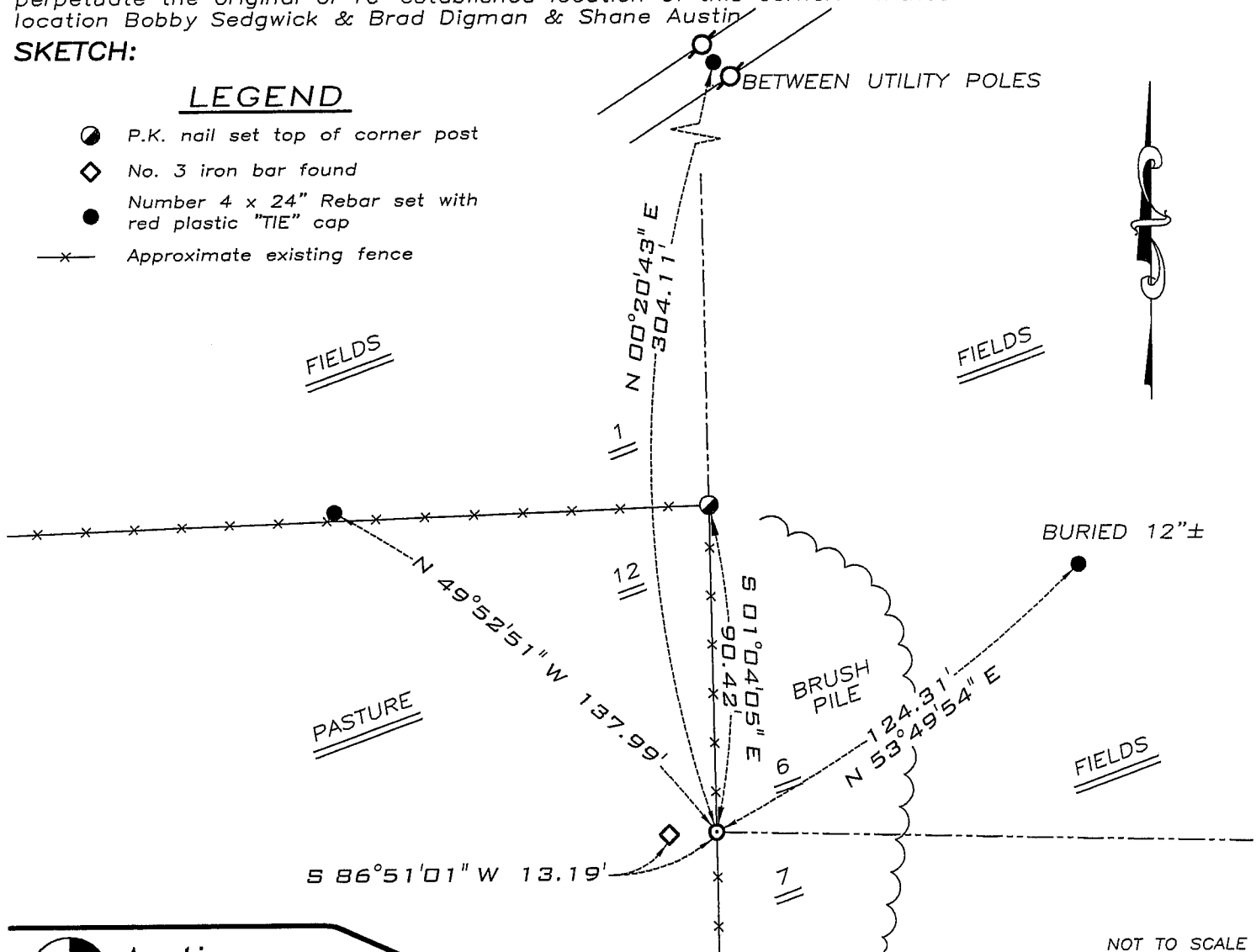
I found the existing No. 6 rebar and accepted its location. The ties were lost due to recent bulldozing. I retied the corner as shown below. Verified this location using EDM & GPS methods.

DESCRIPTION OF CORNER AND WITNESS MONUMENTS, references and accessories used to perpetuate the original or re-established location of this corner. Witnesses to monument location Bobby Sedgwick & Brad Digman & Shane Austin

SKETCH:

LEGEND

- P.K. nail set top of corner post
- ◆ No. 3 iron bar found
- Number 4 x 24" Rebar set with red plastic "TIE" cap
- x- Approximate existing fence



NOT TO SCALE



Austin Engineering LLC

4211 HWY 81 E, LANCASTER, WI 53813
 PHONE 608-723-6363 FAX 608-723-6702

JOB NUMBER 08S029-LENZ ESTATE
 FIELDBOOK: TDSR, 2802 DRAWN BY: SW AUSTIN
 G:\T5NR2W\32 APPROVED: LL AUSTIN
 H:\TIE\T4NR2W\33

Survey Monument Record

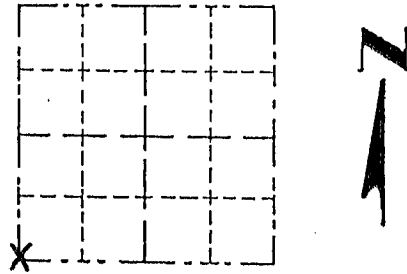
CORNER NO. _____
 SECTION 6
 TOWN 4 NORTH
 RANGE 2 WEST

TYPE OF MONUMENT 3/4" X 24" IRON ROD
 STATE PLANE COORDINATES: N _____
 E _____
 ELEVATION — M.S.L. DATUM: _____
 THETA ANGLE: _____
 FIELD BOOK: _____
 PAGE _____

BASIS FOR MONUMENT LOCATION

(Use reverse side if necessary)

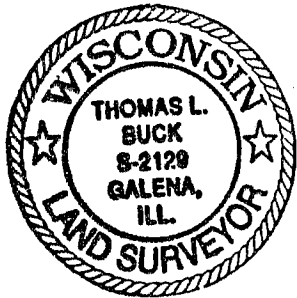
Show info such as: History of corner, with reference to Vol. and pg., dates, surveyor; exact description of monument replaced; if location computed, by taped or EDM traverse; landowner, remarks, etc.



LOCATION
(Indicated by "X")

- FOUND PERPETUATED LOCATION
- OBLITERATED EVIDENCE LOCATION
- LOST CORNER (RESTORED BY PROPORTIONATE METHODS)

I FOUND NO HISTORY OF THIS CORNER SINCE THE ORIGINAL GOVERNMENT SURVEY. I SET THIS CORNER IN THE N-S FENCE LINE AT THE CLOSING CORNER DISTANCE. AFTER AN E. D. M. TRAVERSE AND LOCATION SURVEY OF THE AREA.



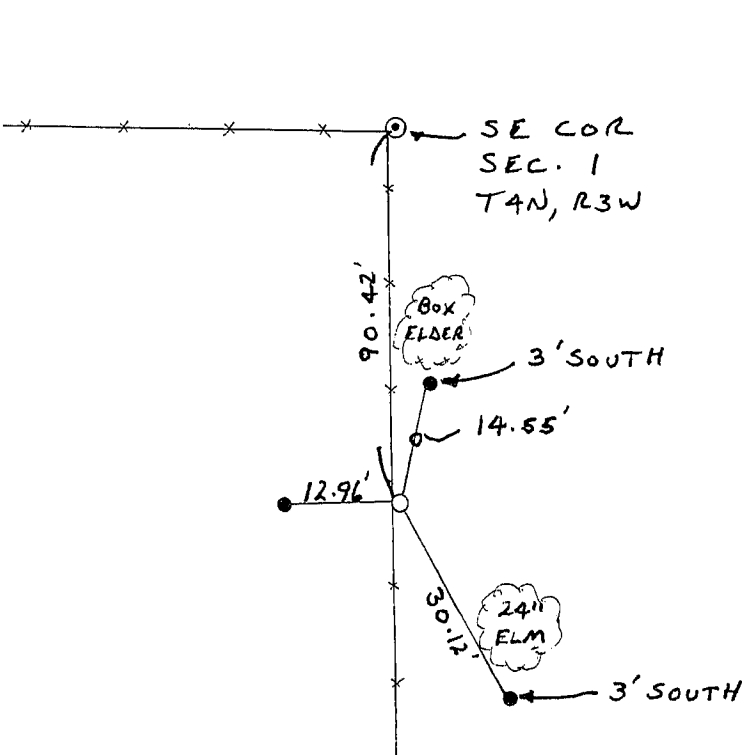
CERTIFIED CORRECT TO THE BEST OF MY KNOWLEDGE AND BELIEF

Thomas Buck
 Registered Land Surveyor

DATE: 8/13/89

TIE SKETCH

Show at least three (3) ties and monument



NO SCALE

- ⊙ = P.K. NAIL IN CONC.
- = 3/4" X 24" IRON ROD
- = 1/2" IRON ROD
- * — * = EXISTING FENCE