

U.S. PUBLIC LAND SURVEY MONUMENT RECORD - GRANT COUNTY, WI

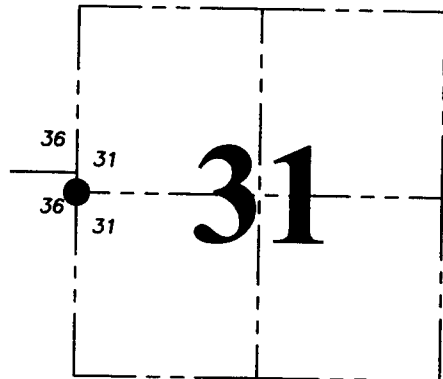
Section 31, Town 4 North Range 1 West, Town of Lima

CERTIFICATE:

I, Aaron J. Austin, Wisconsin Professional Land Surveyor, do hereby certify that the corner location on this record was determined by me and/or under my direct supervision and that this U.S. Public Land Survey Monument Record is correct and complete to the best of my knowledge and belief.

Dated this 8th day of December, 2015.

AUSTIN
LANCASTER
WI
Aaron J. Austin
2022



● = CORNER LOCATION

HISTORY OF CORNER ESTABLISHMENT:

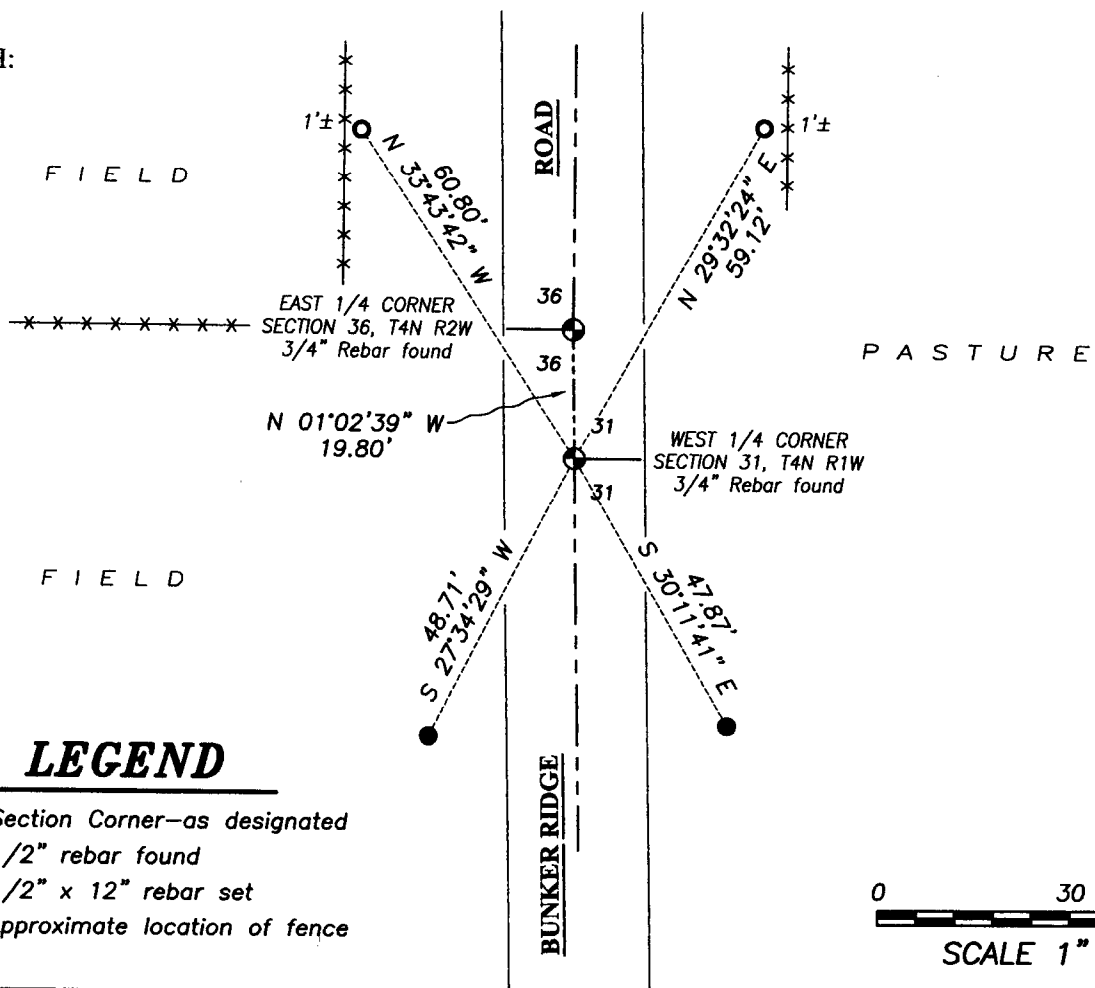
- 1840-Hugill tied to the corner on a Survey in Book A, Page 41.
- 1841-Freeman tied to the corner on a Survey in Book A, Page 81.
- 1841-Freemant tied to the corner on a Survey in Book A, Page 101.
- 1997-L. Austin prepared a Survey Monument Record for the corner.
- 1997-L. Austin reset the corner on a Survey filed in Book 1, Page 44.
- 1999-L. Austin tied to the corner on a Survey filed in Book 6, Page 97.
- 2000-L. Austin tied to the corner on C.S.M. No. 668.
- 2004-L. Austin tied to the corner on C.S.M. No. 1102.

DESCRIPTION OF CORNER EVIDENCE FOUND:

I found the 3/4" rebar as noted and tied by Larry Austin according to the Survey Monument Record for this corner. I was unable to locate 2 ties. I set two new witness corners after verifying this location with E.D.M. and G.P.S. methods.

DESCRIPTION OF CORNER AND WITNESS MONUMENTS, references and accessories used to perpetuate the original or re-established location of this corner. Witnesses to corner location Shane Austin.

SKETCH:



LEGEND

- Section Corner—as designated
- 1/2" rebar found
- 1/2" x 12" rebar set
- x-x- Approximate location of fence



Austin Engineering LLC
austinengineeringllc.com

4211 HWY 81 E, LANCASTER, WI 53813
PHONE: 608-723-6363 FAX: 608-723-6702

JOB NO: 15S226
H:\CRD\15s226
H:\TIE\T4NR1W\114

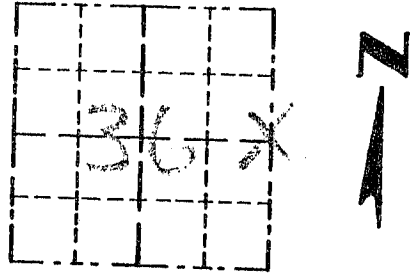
FIELDBOOK: TDSR
DRAWN BY: AJ AUSTIN
CREW: SW AUSTIN

Survey Monument Record

TYPE OF MONUMENT 3/4" X 24" IRON BAR
SET

CORNER NO. 120
 SECTION 36
 TOWN 41N
 RANGE 24W

FIELD BOOK: 97-08
 PAGE (3)



LOCATION
 (Indicated by "X")

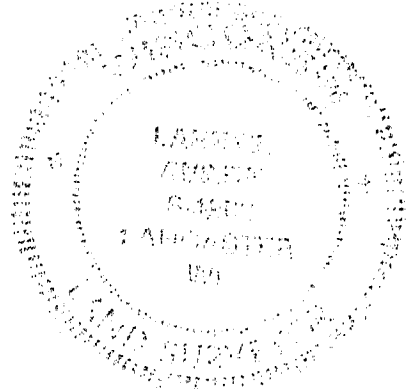
BASIS FOR MONUMENT LOCATION

(Use reverse side if necessary)

Show info such as: History of corner, with reference to Vol. and pg., dates, surveyor; exact description of monument replaced; if location computed, by taped or EDM traverse; landowner, remarks, etc.

SEAL:

CORNER SET IN 1832 BY
 SIBLEY, NO RECORD OF THE CORNER FOUND
 SINCE ORIGINAL SURVEY; CORNER
 WAS SET ONLINE WITH A
 FENCE WEST FOR NORTHING;
 EASTING WAS SET BY EXISTING
 CENTERLINE NORTH/SOUTH, VERIFIED ITS
 LOCATION USING EDM METHODS.



CERTIFIED CORRECT

Randy J. Curt
 Registered Land Surveyor

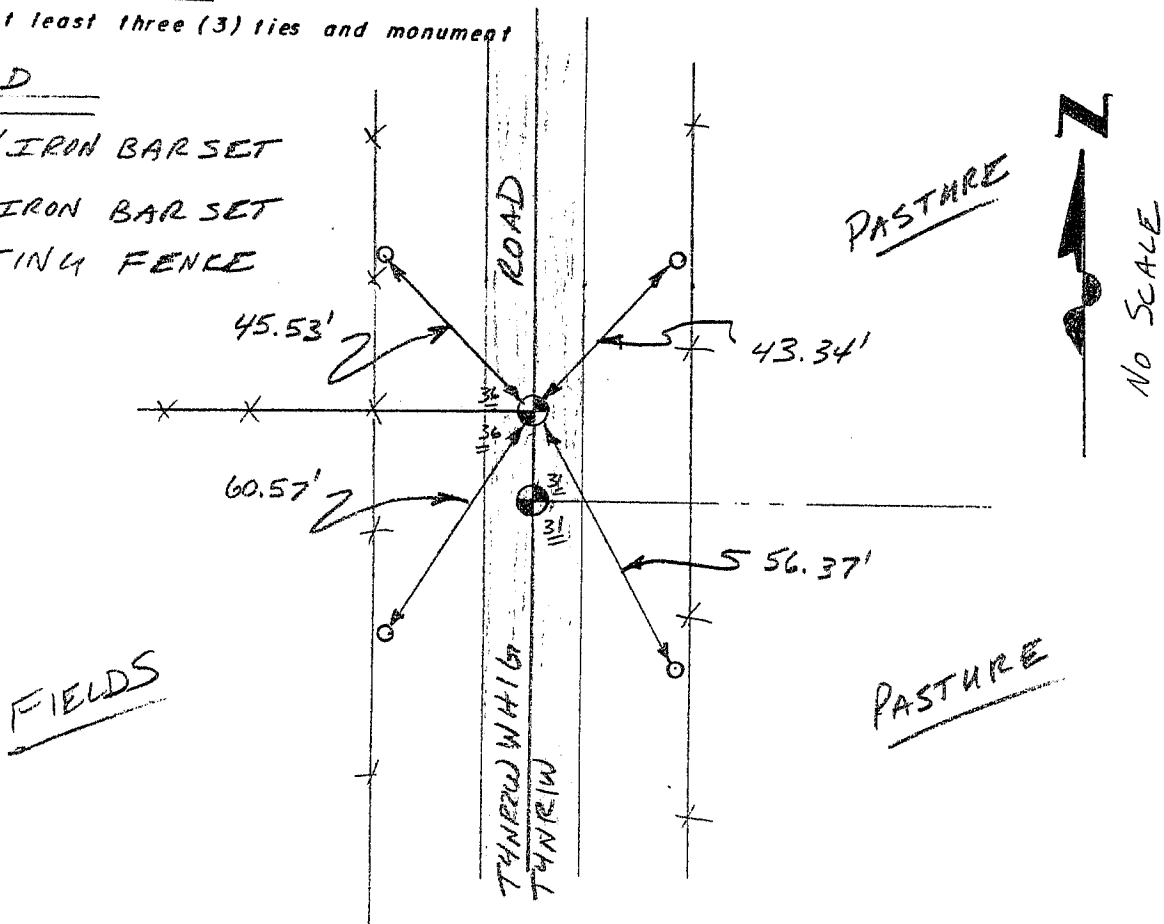
DATE: 12-20-97

TIE SKETCH

Show at least three (3) ties and monument

LEGEND

- ⊙ 3/4" X 24" IRON BAR SET
- 1/2" X 15" IRON BAR SET
- XX EXISTING FENCE

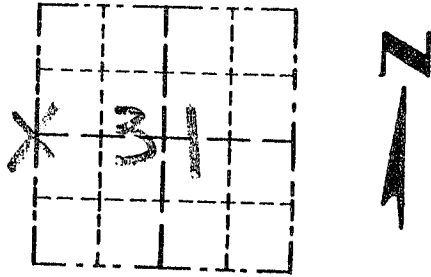


Survey Monument Record

TYPE OF MONUMENT 3/4" X 24" IRON BAR
SET

CORNER NO. 114
 SECTION 31
 TOWN 4N
 RANGE 12W

FIELD BOOK: 97-08
 PAGE 3



LOCATION
 (Indicated by "X")

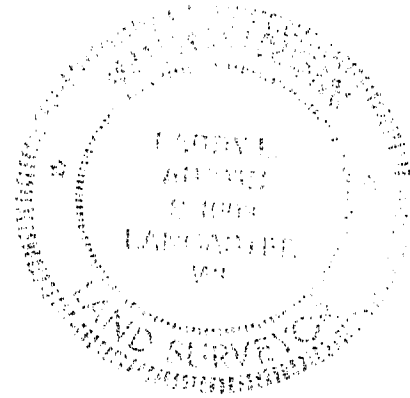


BASIS FOR MONUMENT LOCATION

(Use reverse side if necessary)

Show info such as: History of corner, with reference to Vol. and pg., dates, surveyor; exact description of monument replaced; if location computed, by taped or EDM traverse; landowner, remarks, etc.

SEAL:



CORNER SET IN 1833 BY CLARK. NO RECORD FOUND SINCE ORIGINAL SURVEY; CORNER WAS SET AT PROPORTIONATE OFFSET FROM EXISTING FENCE WEST & ON THE EAST LINE OF SEC. 36 T4N R2W; VERIFIED THIS LOCATION BY EDM TRAVERSE OF THE AREA.

CERTIFIED CORRECT

Henry R. Rust
 Registered Land Surveyor

DATE: 12/20/97

TIE SKETCH

Show at least three (3) ties and monument

LEGEND

- ⊕ 3/4" X 24" IRON BAR SET
- 1/2" X 15" IRON BAR SET
- XX EXISTING FENCE 60.88'

