

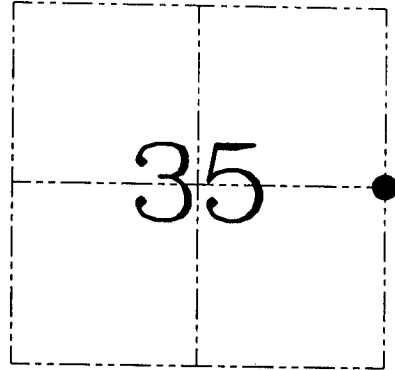
**U.S. PUBLIC LAND SURVEY MONUMENT RECORD – GRANT COUNTY, WI**  
**Section 35, Town 4 North Range 2 West, Town of Ellenboro**

**CERTIFICATE**

I, Larry L. Austin, do hereby certify that the corner location on this record was determined by me and/or under my direct supervision and that this U.S. public land survey monument record is correct and complete to the best of my knowledge and belief.

Dated this 16th day of September, 2002

*Larry L. Austin*  
 Larry L. Austin S-1903



● = CORNER LOCATION

**HISTORY OF CORNER ESTABLISHMENT**

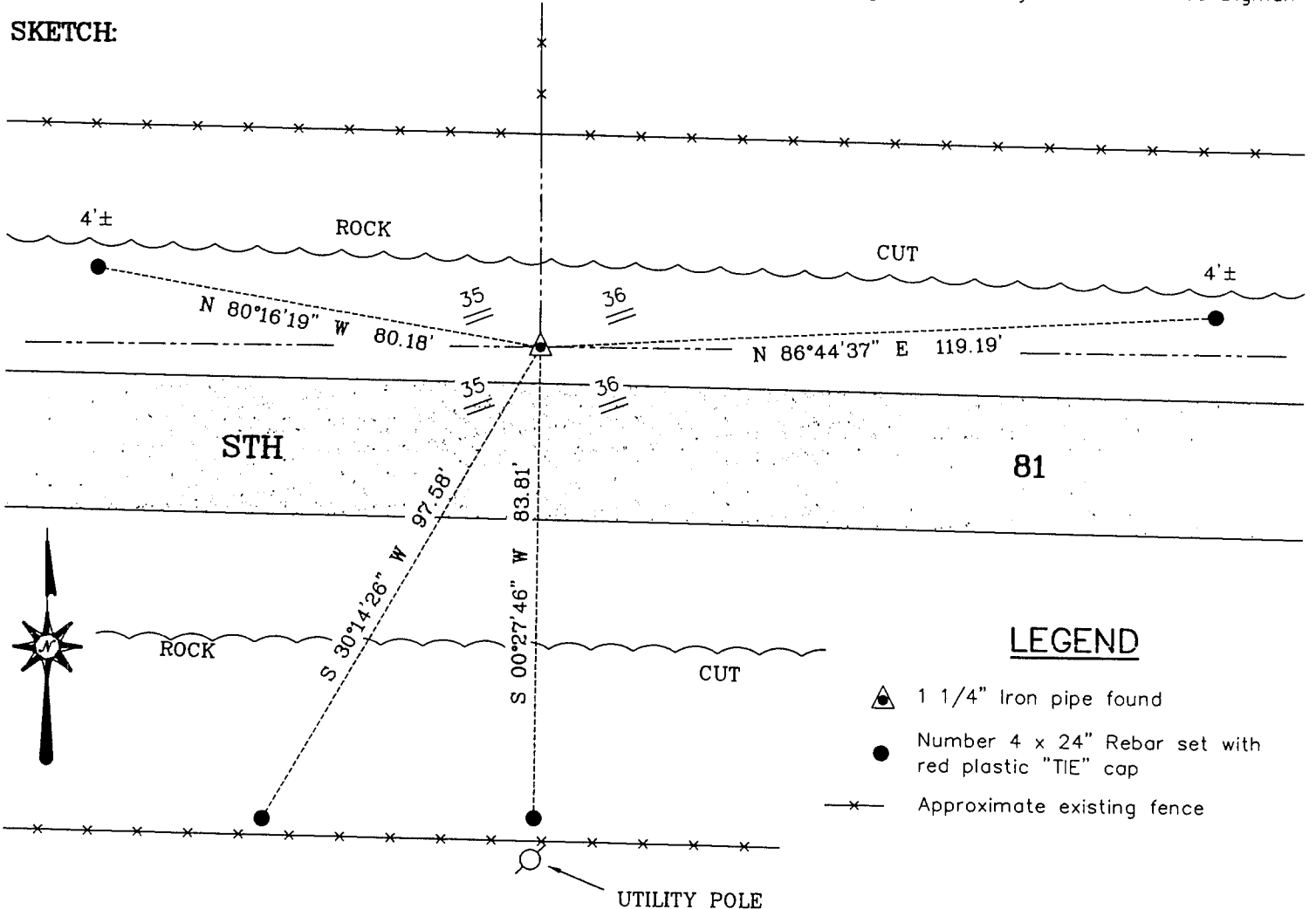
Corner was originally set in 1833 by Robert Clark.  
 In 1992 I set a 1.25" Iron pipe at this location.

**DESCRIPTION OF CORNER EVIDENCE FOUND**

I found and accepted the 1.25" iron pipe and set ties. Verified this location using EDM & GPS methods.

**DESCRIPTION OF CORNER AND WITNESS MONUMENTS**, references and accessories used to perpetuate the original or re-established location of this corner. Witnesses to corner location Bobby Sedgwick & Shelby Blindert & Brad Digman

**SKETCH:**



**LEGEND**

- ▲ 1 1/4" Iron pipe found
- Number 4 x 24" Rebar set with red plastic "TIE" cap
- x— Approximate existing fence

\* SEE SECTION SUMMARY FOR \*  
 RELATIONSHIP TO AREA CORNERS

SKETCH NOT TO SCALE

**AUSTIN ENGINEERING, LLC**

4211 HWY 81 EAST, LANCASTER, WI 53813  
 PHONE 608-723-6363 FAX 608-723-6702

FIELDBOOK: SDR33, 2211  
 G: \T4NR2W\DAGNON2  
 C: \SWA\TIE\T4NR2W\119  
 CREW: BS-SB-SA-BD

DRAWN BY: SW AUSTIN  
 APPROVED: LL AUSTIN

**CORNER NUMBER 119**