

GRANT COUNTY CERTIFIED LAND CORNER

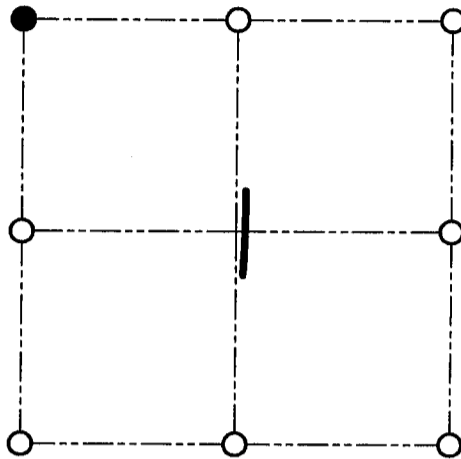
CORNER NUMBER 03

CERTIFICATE:

I, Larry L. Austin, do hereby certify that on the 3rd day of August, 2000, I found evidence of the Northwest corner of Section 1, Town 3 North, Range 2 West, of the 4th Principal Meridian, and I re-established said corner according to the Wisconsin statutes as shown and described hereon.

Dated this 22nd day of September, 2000

Larry L. Austin S-1903



● = CORNER LOCATION

NORTHWEST CORNER OF SECTION 1, T 3 N R 2 W TOWN OF HARRISON

HISTORY OF ORIGINAL CORNER ESTABLISHMENT:

Corner was originally set in 1832 by Robert Clark.
No other record of the corner was found.

DESCRIPTION OF CORNER EVIDENCE FOUND:

I found an existing Aluminum monument at this location.
I accepted it's location after an E.D.M. & G.P.S. traverse of the area.

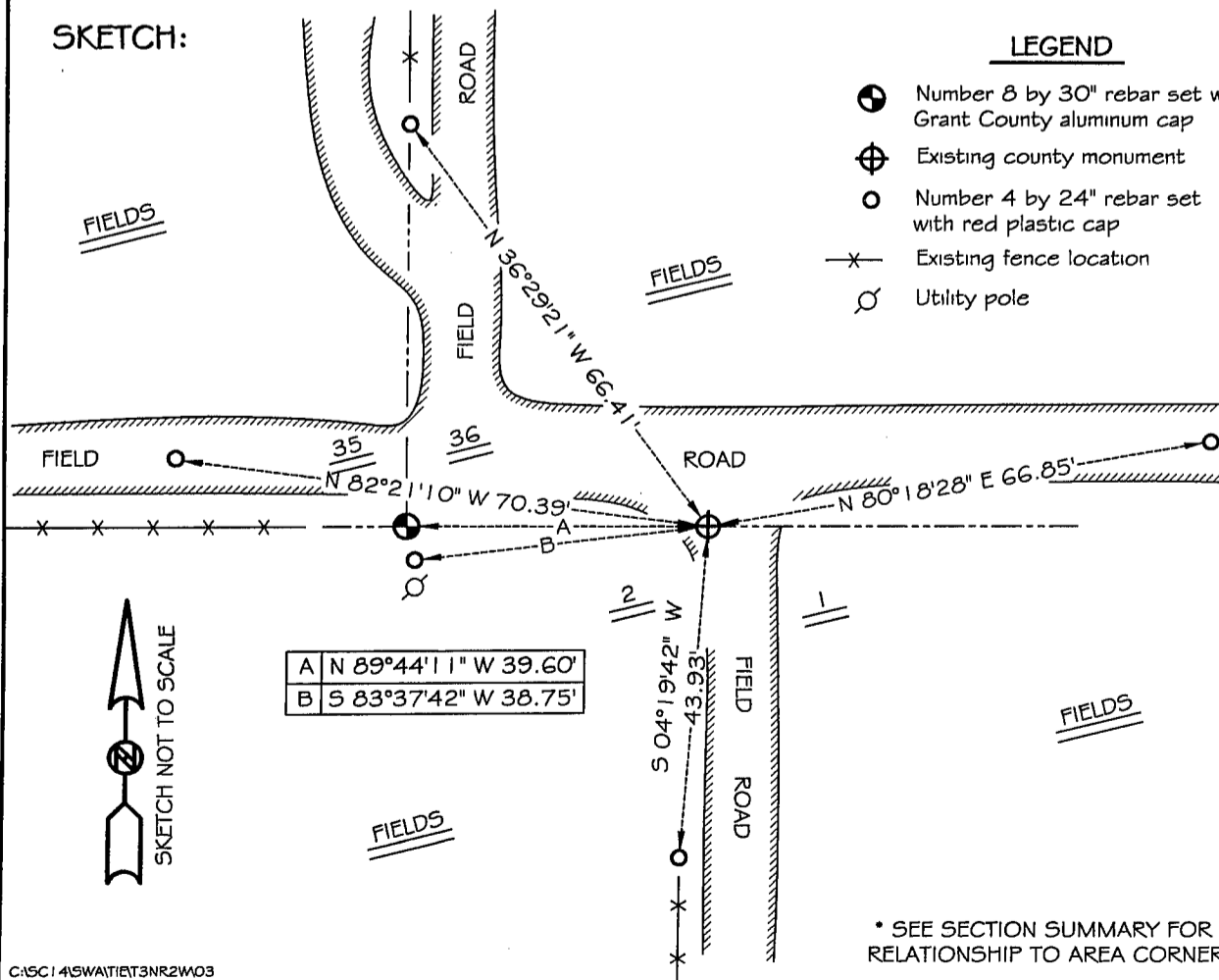
DESCRIPTION OF CORNER AND WITNESS MONUMENTS, references and accessories used to perpetuate the original or re-established location of this corner

WITNESS TO THE CORNER LOCATION: SHANE AUSTIN & JERRY SPEILMAN

SKETCH:

LEGEND

- ⊕ Number 8 by 30" rebar set with Grant County aluminum cap
- ⊕ Existing county monument
- Number 4 by 24" rebar set with red plastic cap
- x- Existing fence location
- ⊙ Utility pole



* SEE SECTION SUMMARY FOR *
RELATIONSHIP TO AREA CORNERS