

GRANT COUNTY CERTIFIED LAND CORNER

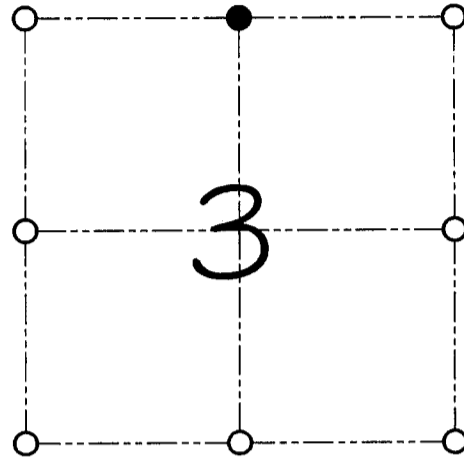
CORNER NUMBER 06

CERTIFICATE:

I, Larry L. Austin, do hereby certify that on the 2nd day of June, 2000, I found evidence of the North 1/4 corner of Section 03, Town 3 North, Range 2 West, of the 4th Principal Meridian, and I re-established said corner according to the Wisconsin statutes as shown and described hereon.

Dated this 20th day of October, 2000

Larry L. Austin
Larry L. Austin S-1903



● = CORNER LOCATION
NORTH 1/4 CORNER OF SECTION 3, T 3 N R 2 W TOWN OF HARRISON

HISTORY OF ORIGINAL CORNER ESTABLISHMENT:

Corner was never originally set.
In 1990 I set a 1.5" iron pipe.

DESCRIPTION OF CORNER EVIDENCE FOUND:

I found the 1.5" iron pipe and accepted its location after an EDM & GPS traverse of the area.

DESCRIPTION OF CORNER AND WITNESS MONUMENTS, references and accessories used to perpetuate the original or re-established location of this corner

WITNESS TO THE CORNER LOCATION: SHELBY BLINDERT & BOBBY SEDGWICK

SKETCH:



WOODS

3

N 43°50'52" W 6.12'

10

WOODS

* SEE SECTION SUMMARY FOR *
RELATIONSHIP TO AREA CORNERS

LEGEND

- ⊕ 1.5" Iron pipe found
- ⊙ No. 6 iron bar found
- Number 4 by 24" rebar set with red plastic cap
- ⊗ 3/8" spike found
- x— Existing fence location

WOODS

10

WOODS

1'± WEST 6" OAK

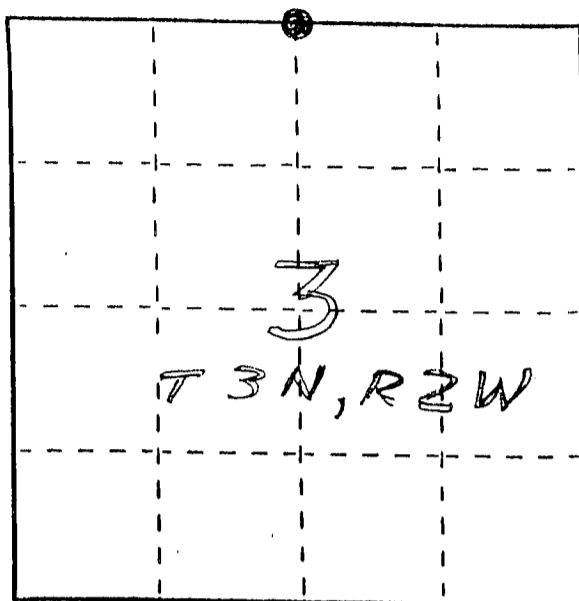
U. S. PUBLIC LAND SURVEY MONUMENT RECORD

INSTRUCTIONS: This record shall show the location of the corner and shall include all of the following nine elements (a through i).

(a) Identify the corner by reference to the U.S. public land survey system.

● = Corner monument restored.

N 1/4 COR., SEC. 3,
T3N, R2W, HARRISON
TWP., GRANT CO., WI

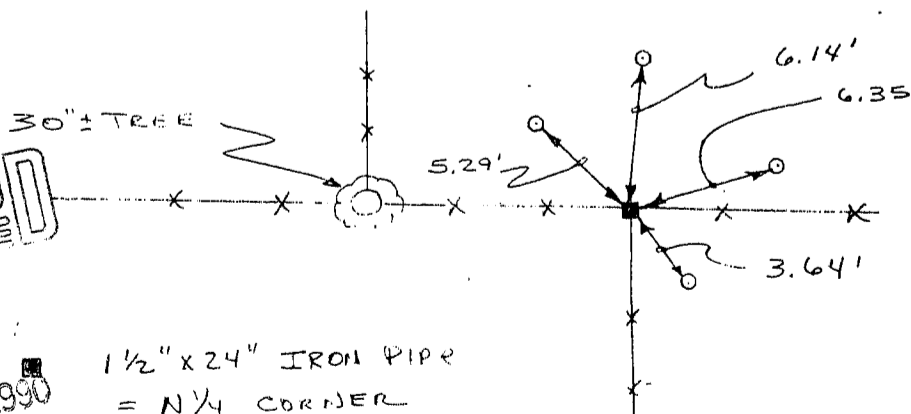


(b) Describe any record evidence, monument evidence, occupational evidence, testimonial evidence or any other material evidence you considered, and whether the monument was found or placed.

PLACED MONUMENT AT OCCUPIED CORNER
BASED ON ORAL TESTIMONY & VERIFIED BY EDM
TRAVERSE.

(c) In the plan view drawing below, provide reference ties to at least 4 witness monuments, or, if the location is within a municipality, to at least 2 witness monuments. (Witness monuments shall be made of concrete, natural stone, iron or other equally durable material, ~~except~~ wood.) Describe witness monuments.

(d) Show a plan view drawing depicting the relevant monuments and reference ties which is sufficient in detail to enable accurate relocation of the corner monument if the corner monument is disturbed. Indicate north.



No SCALE

GRANT COUNTY CLERK
RECEIVED

SEP 20 1990

1/2" x 24" IRON PIPE
= N 1/4 CORNER
SEC. 3
o = 3/8" x 10" STEEL PEG
= TIE

X-X EXISTING FENCE

