

# GRANT COUNTY CERTIFIED LAND CORNER

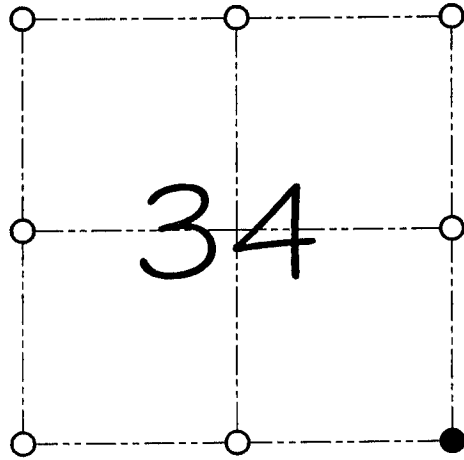
CORNER NUMBER 125

**CERTIFICATE:**

I, Larry L. Austin, do hereby certify that on the 2nd day of June, 2000, I found evidence of the Southeast corner of Section 34, Town 4 North, Range 2 West, of the 4th Principal Meridian, and I re-established said corner according to the Wisconsin statutes as shown and described hereon.

Dated this 20th day of October, 2000

*Larry L. Austin*  
Larry L. Austin S-1903



● = CORNER LOCATION

SOUTHEAST CORNER OF SECTION 34, T.4 N R.2 W TOWN OF ELLENBORO

**HISTORY OF ORIGINAL CORNER ESTABLISHMENT:**

Corner was originally set in 1833 by Clark.  
In 1993 I set an Aluminum monument at this location.

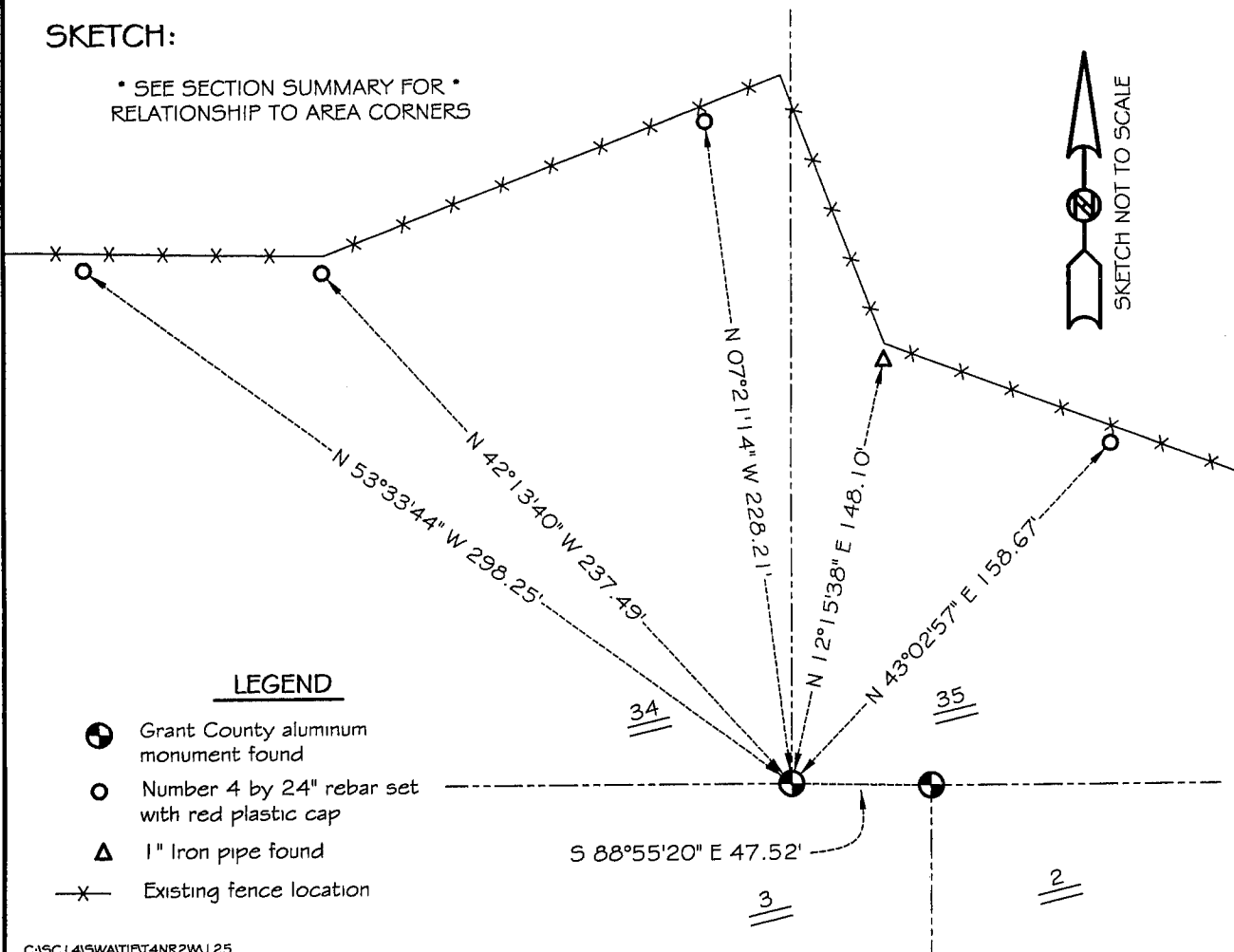
**DESCRIPTION OF CORNER EVIDENCE FOUND:**

I found and accepted the Aluminum monument after an EDM & GPS traverse of the area.

**DESCRIPTION OF CORNER AND WITNESS MONUMENTS, references and accessories used to perpetuate the original or re-established location of this corner**  
WITNESS TO THE CORNER LOCATION: SHELBY BLINDERT & BOBBY SEDGWICK

**SKETCH:**

\* SEE SECTION SUMMARY FOR \*  
RELATIONSHIP TO AREA CORNERS



# GRANT COUNTY CERTIFIED LAND CORNER

CORNER NUMBER 05

**CERTIFICATE:**

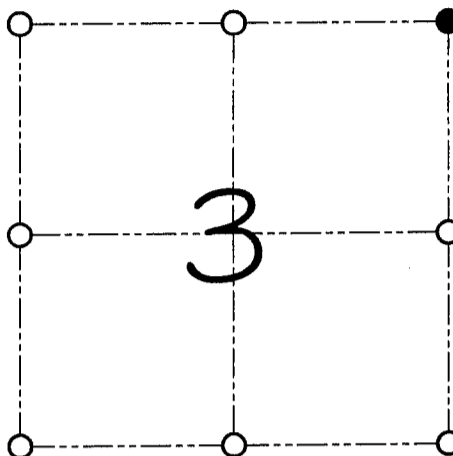
I, Larry L. Austin, do hereby certify that on the 2nd day of June, 2000, I found evidence of the Northeast corner of Section 3, Town 3 North, Range 2 West, of the 4th Principal Meridian, and I re-established said corner according to the Wisconsin statutes as shown and described hereon.

Dated this 20th day of October, 2000

*Larry L. Austin*  
Larry L. Austin S-1903



SEAL



● = CORNER LOCATION

NORTHEAST CORNER OF SECTION 3, T 3 N R 2 W TOWN OF HARRISON

**HISTORY OF ORIGINAL CORNER ESTABLISHMENT:**

Corner was originally set in 1833 by Clark.  
In 1990 I set an Aluminum monument at this location.

**DESCRIPTION OF CORNER EVIDENCE FOUND:**

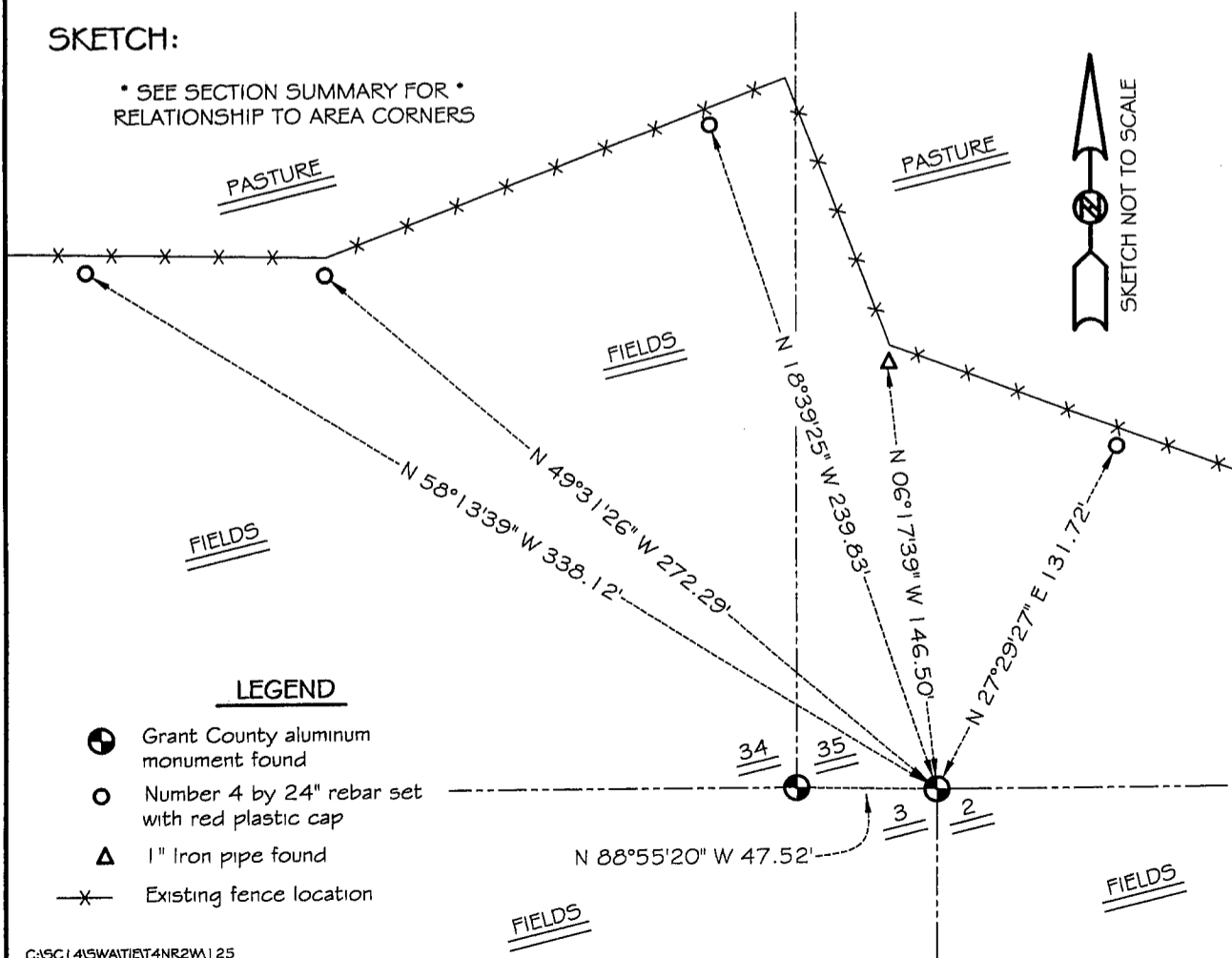
I found and accepted the Aluminum monument after an EDM & GPS traverse of the area.

**DESCRIPTION OF CORNER AND WITNESS MONUMENTS, references and accessories used to perpetuate the original or re-established location of this corner**

WITNESS TO THE CORNER LOCATION: SHELBY BLINDERT & BOBBY SEDGWICK

**SKETCH:**

\* SEE SECTION SUMMARY FOR \*  
RELATIONSHIP TO AREA CORNERS



**LEGEND**

- Grant County aluminum monument found
- Number 4 by 24" rebar set with red plastic cap
- ▲ 1" Iron pipe found
- x- Existing fence location