

GRANT COUNTY CERTIFIED LAND CORNER

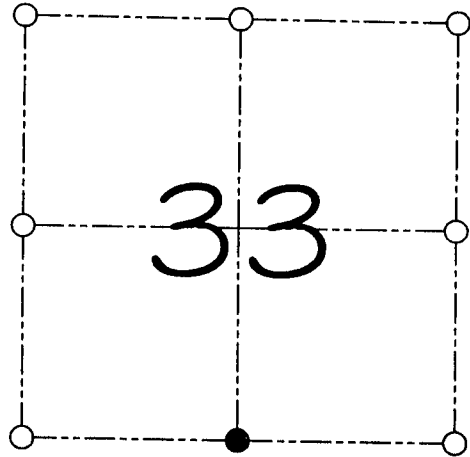
CORNER NUMBER 128

CERTIFICATE:

I, Larry L. Austin, do hereby certify that on the 11th day of November, 1995, I found no evidence of the South 1/4 corner of Section 22, Town 4 North, Range 2 West, of the 4th Principal Meridian, and I re-established said corner according to the Wisconsin statutes as shown and described hereon.

Dated this 9th day of June, 2000

Larry L. Austin
Larry L. Austin S-1903



● = CORNER LOCATION
SOUTH 1/4 CORNER OF SECTION 33, T 4 N R 2 W TOWN OF ELLENBORO

HISTORY OF ORIGINAL CORNER ESTABLISHMENT:

Corner was originally set in 1832 by Sibley. In 1844 Sam Miller tied to the corner, In 1870 Joseph Allen tied to the corner.

DESCRIPTION OF CORNER EVIDENCE FOUND:

I found no evidence of the location of the corner.
I reset the corner based on proportioning methods along the South line of Section 33. Verified this location using E.D.M. methods.

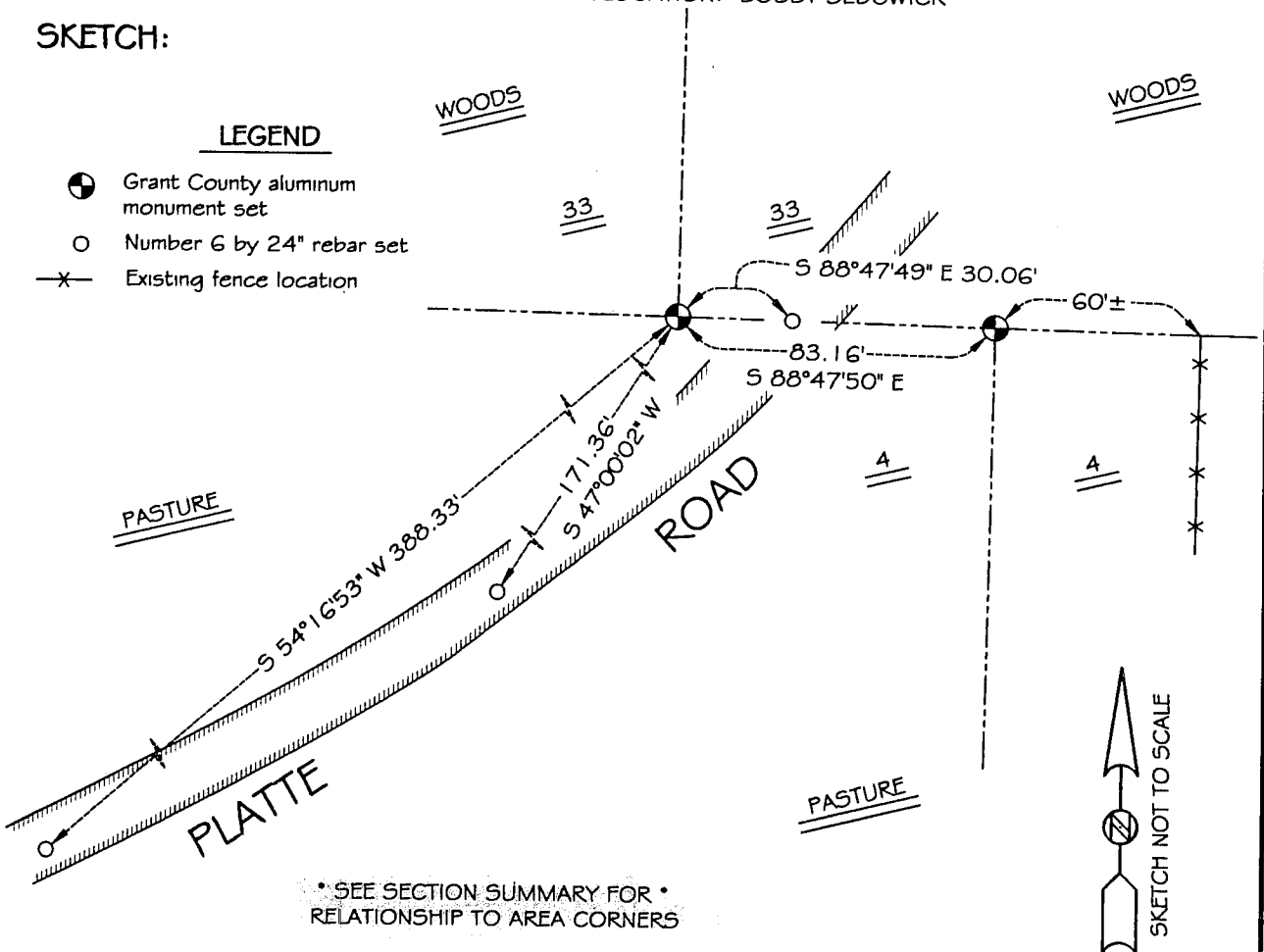
DESCRIPTION OF CORNER AND WITNESS MONUMENTS, references and accessories used to perpetuate the original or re-established location of this corner

WITNESS TO THE CORNER LOCATION: BOBBY SEDGWICK

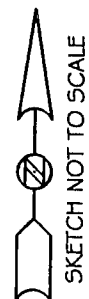
SKETCH:

LEGEND

- Grant County aluminum monument set
- Number 6 by 24" rebar set
- x- Existing fence location



• SEE SECTION SUMMARY FOR •
RELATIONSHIP TO AREA CORNERS



GRANT COUNTY CERTIFIED LAND CORNER

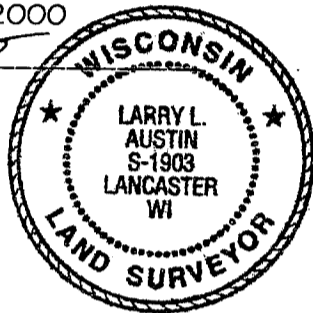
CORNER NUMBER 08

CERTIFICATE:

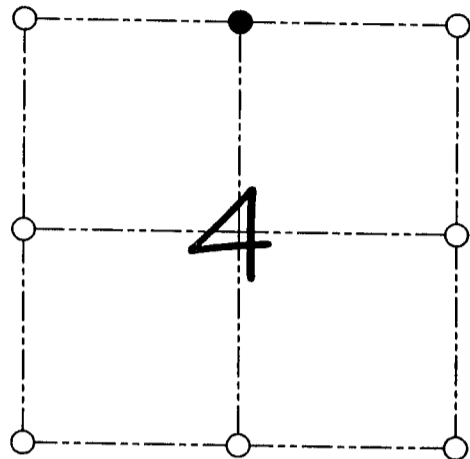
I, Larry L. Austin, do hereby certify that on the 11th day of November, 1995, I found no evidence of the North 1/4 corner of Section 4, Town 3 North, Range 2 West, of the 4th Principal Meridian, and I re-established said corner according to the Wisconsin statutes as shown and described hereon.

Dated this 9th day of June, 2000

Larry L. Austin
Larry L. Austin S-1903



SEAL



● = CORNER LOCATION

NORTH 1/4 CORNER OF
SECTION 4, T 3 N R 2 W
TOWN OF HARRISON

HISTORY OF ORIGINAL CORNER ESTABLISHMENT:

Corner was never originally set. Corner was tied 1855 by Overton no mention of a monument.

DESCRIPTION OF CORNER EVIDENCE FOUND:

I found no evidence of the location of the corner. I set the corner at the proportioned offset from the South 1/4 of Section 33. Verified this location using E.D.M. methods.

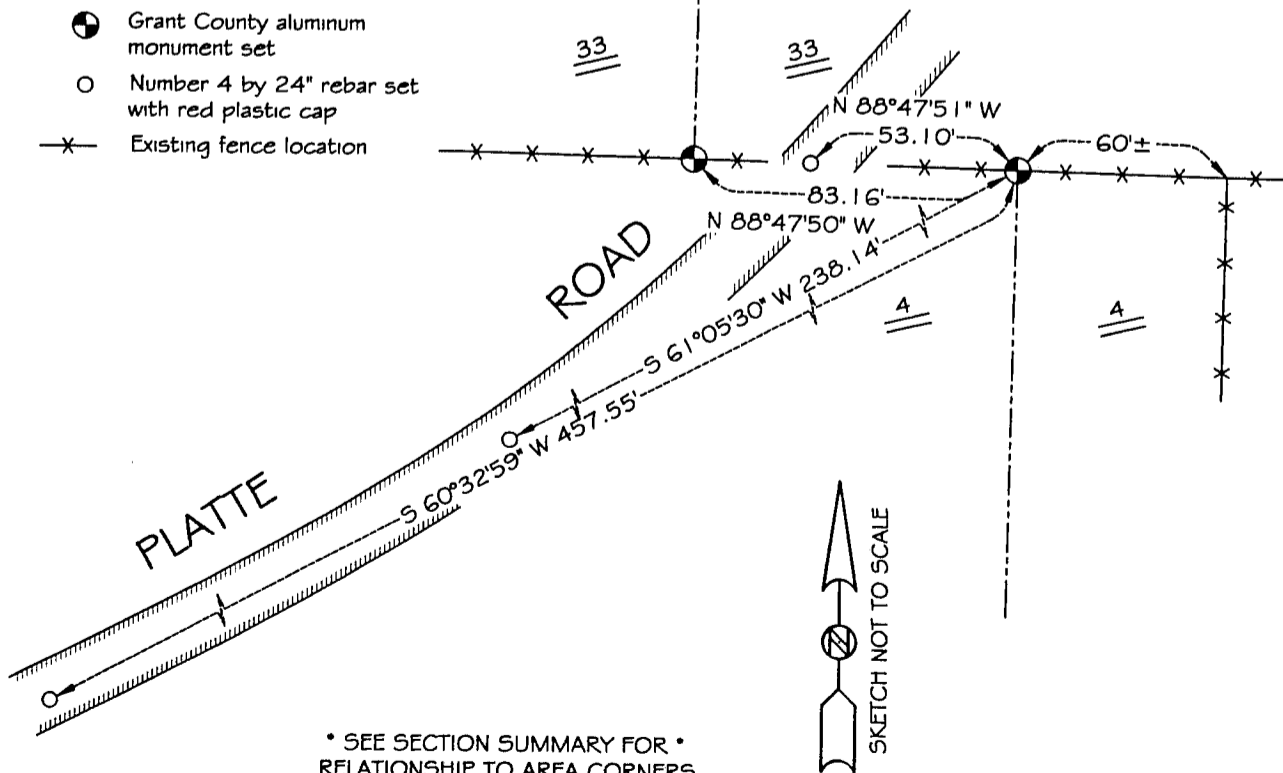
DESCRIPTION OF CORNER AND WITNESS MONUMENTS, references and accessories used to perpetuate the original or re-established location of this corner

WITNESS TO THE CORNER LOCATION: BOBBY SEDGWICK

SKETCH:

LEGEND

- Grant County aluminum monument set
- Number 4 by 24" rebar set with red plastic cap
- x— Existing fence location



* SEE SECTION SUMMARY FOR *
RELATIONSHIP TO AREA CORNERS