

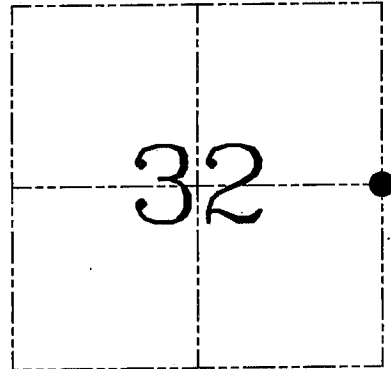
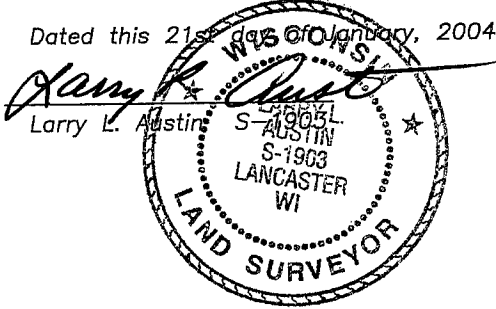
U.S. PUBLIC LAND SURVEY MONUMENT RECORD – GRANT COUNTY, WI

Section 32, Town 4 North Range 2 West, Town of Ellenboro

CERTIFICATE

I, Larry L. Austin, do hereby certify that the corner location on this record was determined by me and/or under my direct supervision and that this U.S. public land survey monument record is correct and complete to the best of my knowledge and belief.

Dated this 21st day of January, 2004



● = CORNER LOCATION

HISTORY OF CORNER ESTABLISHMENT

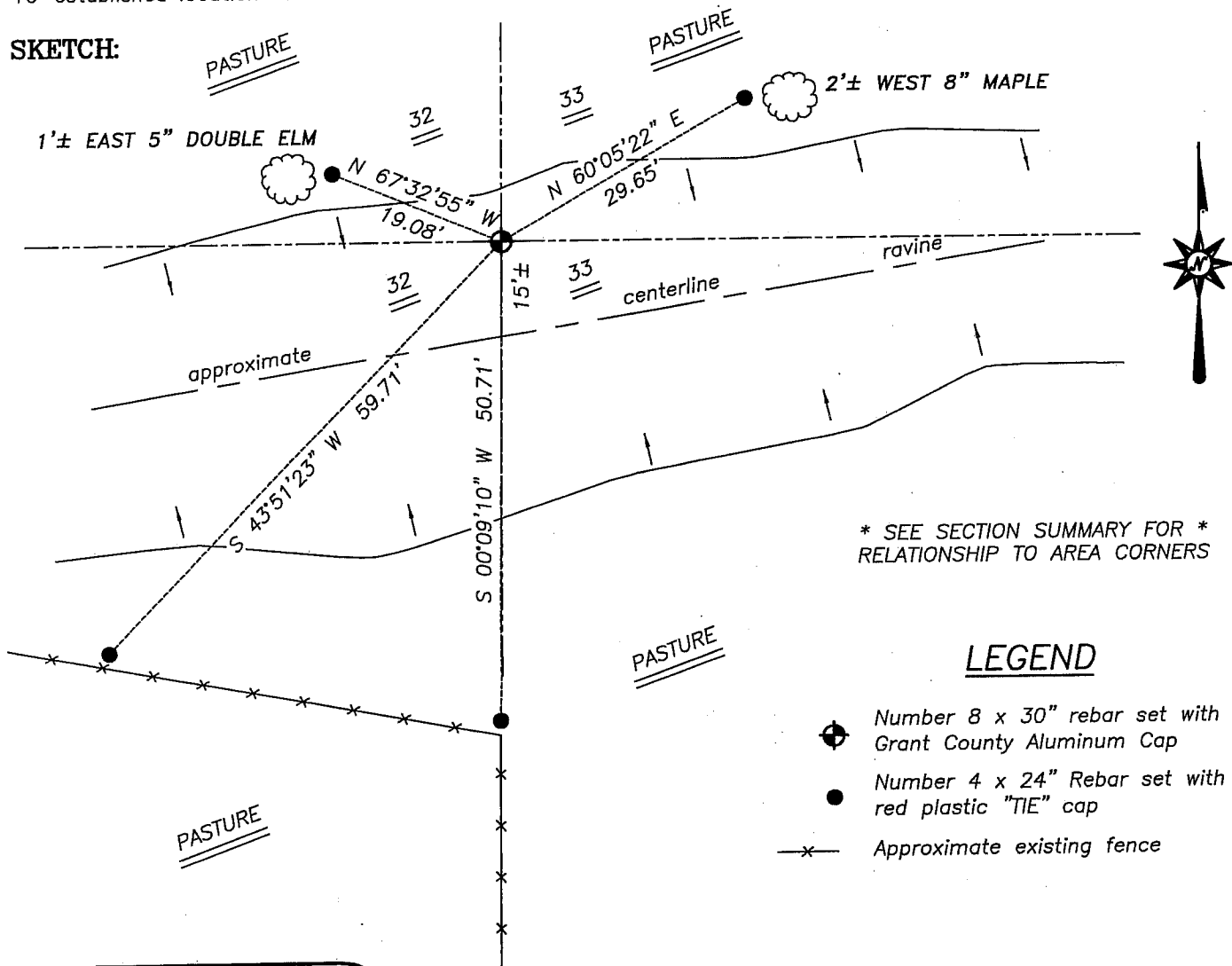
Corner was originally set in 1833 by Clark. In 1870 Allen found the original corner. No other record of the corner was found.

DESCRIPTION OF CORNER EVIDENCE FOUND

Corner was set on-line with fence from South for Easting. Northing was established equal distant between the Northeast and Southeast corners of Section 32. Verified this location using EDM & GPS methods.

DESCRIPTION OF CORNER AND WITNESS MONUMENTS, references and accessories used to perpetuate the original or re-established location of this corner. Witnesses to corner location Bobby Sedgwick & Shane Austin & Brad Digman

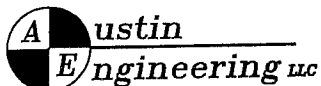
SKETCH:



LEGEND

- ◆ Number 8 x 30" rebar set with Grant County Aluminum Cap
- Number 4 x 24" Rebar set with red plastic "TIE" cap
- x- Approximate existing fence

SKETCH NOT TO SCALE



4211 HWY 81 E, LANCASTER, WI 53813
PHONE 608-723-6363 FAX 608-723-6702

JOB NUMBER 03S052
FIELDBOOK: TSDR, 9726
G:\T4NR2W\T4NR2W
H:\TIE\T4NR2W\116

DRAWN BY: SW AUSTIN
APPROVED: LL AUSTIN