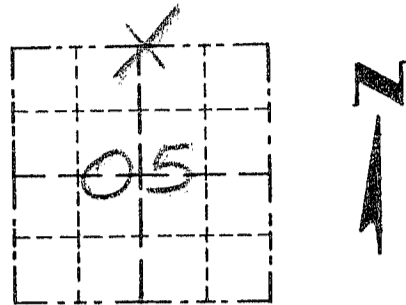


Survey Monument Record

CORNER NO. 10
 SECTION 05
 TOWN 3N
 RANGE 2W

TYPE OF MONUMENT 3/4" x 24" IRON
1 1/2" x 15"

FIELD BOOK: 77-13
 PAGE (13)



LOCATION
 (Indicated by "X")

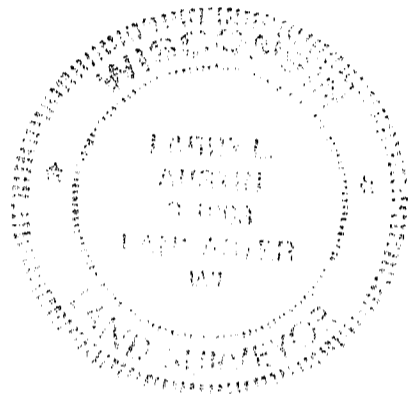
BASIS FOR MONUMENT LOCATION

(Use reverse side if necessary)

Show info such as: History of corner, with reference to Vol. and pg., dates, surveyor; exact description of monument replaced; if location computed, by taped or EDM traverse; landowner, remarks, etc.

SEAL:

CORNER WAS SET IN 1855 BY OVERTON AT 165 LINKS EAST OF THE SW CORNER OF SECTION 32, T4N R2W; I ACCEPTED AN OCCUPATIONAL LOCATION AS THE CORNER & ESTABLISHED ITS LOCATION ON THE SOUTH LINE OF SECTION 32.



CERTIFIED CORRECT

Randy S. Rust
 Registered Land Surveyor

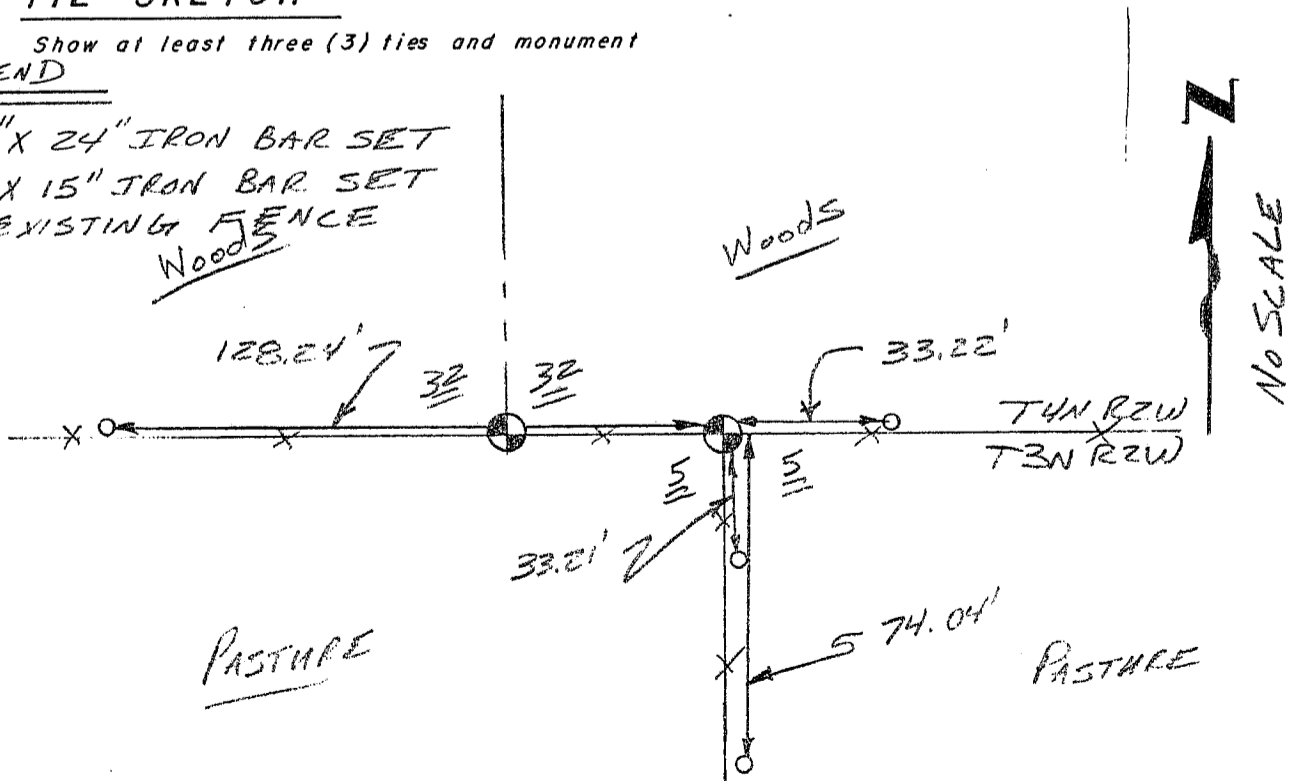
DATE: 9-12-97

TIE SKETCH

Show at least three (3) ties and monument

LEGEND

- ⊕ 3/4" x 24" IRON BAR SET
- 1/2" x 15" IRON BAR SET
- XX EXISTING FENCE

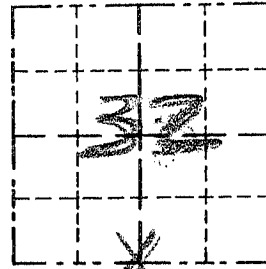


Survey Monument Record

TYPE OF MONUMENT 3/4" x 24" IRON BAR
SET

CORNER NO. 130
 SECTION 32
 TOWN 7N
 RANGE 2W

FIELD BOOK: 97-13
 PAGE (13)



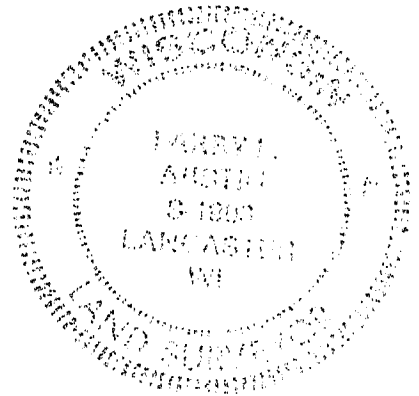
BASIS FOR MONUMENT LOCATION

(Use reverse side if necessary)

Show info such as: History of corner, with reference to Vol. and pg., dates, surveyor; exact description of monument replaced; if location computed, by taped or EDM traverse; landowner, remarks, etc.

CORNER WAS SET IN 1832 BY SIBLEY, IN 1855 OVERTON FOUND ORIGINAL CORNER. I SET THE CORNER AT THE RECORDED OFFSET FROM THE OCCUPIED N 1/4 CORNER SECTION 5, T3N R2W. VERIFIED ITS LOCATION USING EDM METHODS.

SEAL:



CERTIFIED CORRECT

Harvey P. Austin
 Registered Land Surveyor

DATE: 9-12-97

TIE SKETCH

Show at least three (3) ties and monument

LEGEND

- 3/4" x 24" IRON BAR SET
- 1/2" x 15" IRON BAR SET
- XX EXISTING FENCE

