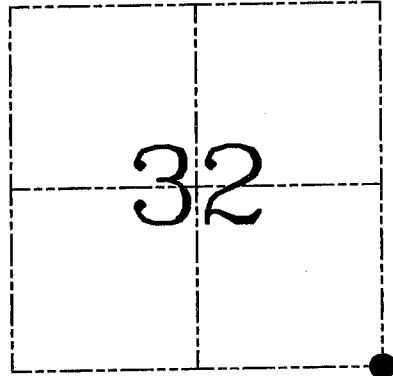
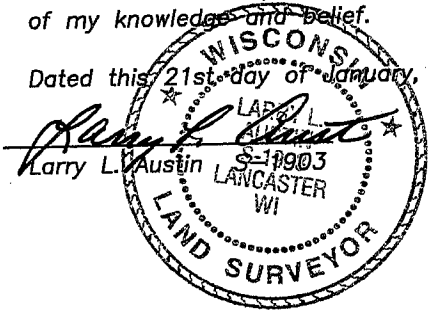


**U.S. PUBLIC LAND SURVEY MONUMENT RECORD – GRANT COUNTY, WI**  
**Section 32, Town 4 North Range 2 West, Town of Ellenboro**

CERTIFICATE

I, Larry L. Austin, do hereby certify that the corner location on this record was determined by me and/or under my direct supervision and that this U.S. public land survey monument record is correct and complete to the best of my knowledge and belief.

Dated this 21st day of January, 2004



● = CORNER LOCATION

HISTORY OF CORNER ESTABLISHMENT

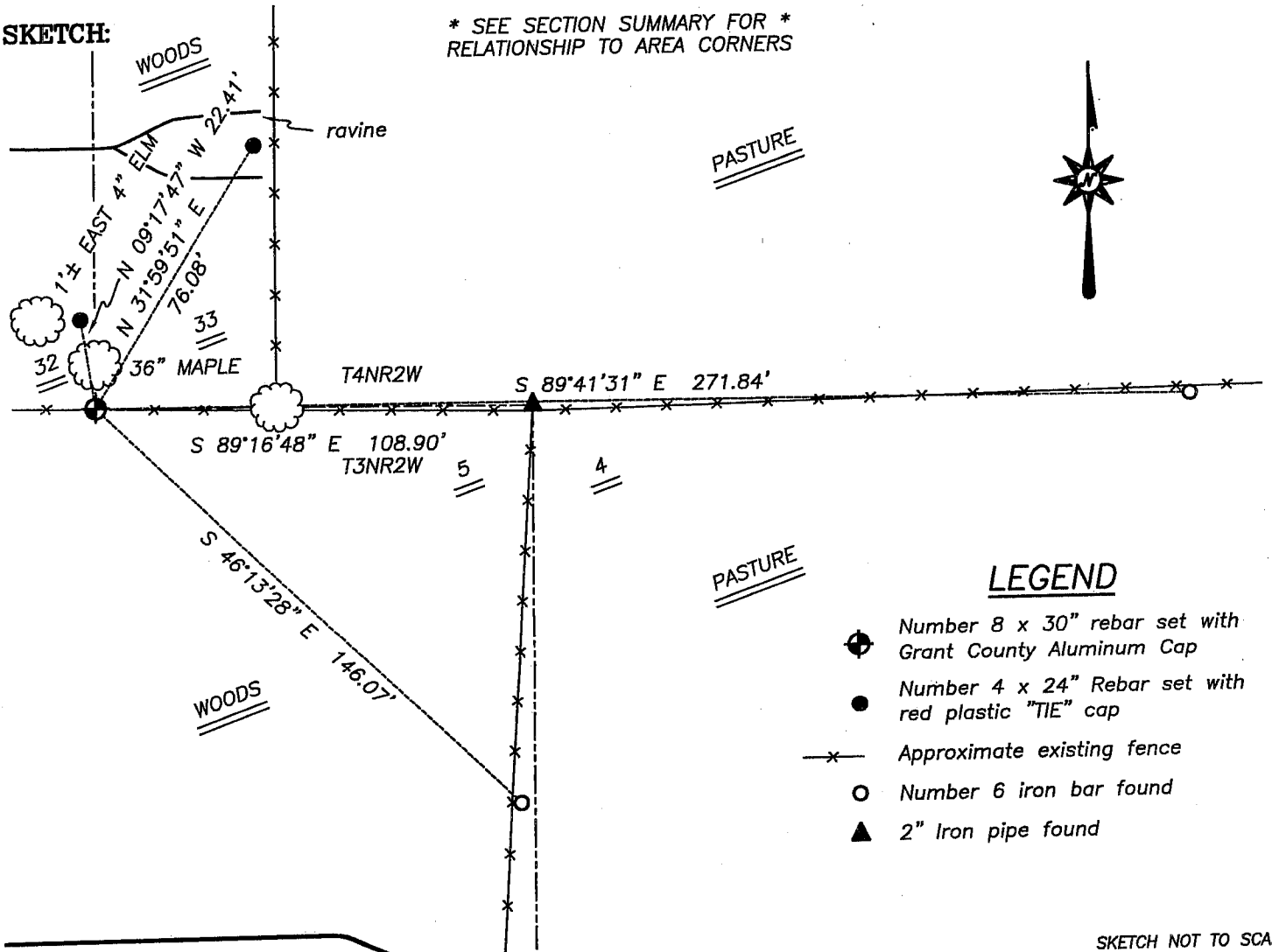
Corner was originally set in 1832 by Sibley.  
 No other record of the corner was found.

DESCRIPTION OF CORNER EVIDENCE FOUND

I reset the corner at the recorded offset from the Northeast corner of Section 5. Verified this location using EDM & GPS methods.

DESCRIPTION OF CORNER AND WITNESS MONUMENTS, references and accessories used to perpetuate the original or re-established location of this corner. Witnesses to corner location Bobby Sedgwick & Shane Austin & Brad Digman

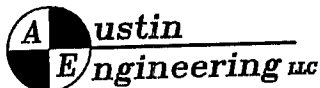
**SKETCH:**



LEGEND

- Number 8 x 30" rebar set with Grant County Aluminum Cap
- Number 4 x 24" Rebar set with red plastic "TIE" cap
- x— Approximate existing fence
- Number 6 iron bar found
- ▲ 2" Iron pipe found

SKETCH NOT TO SCALE



4211 HWY 81 E, LANCASTER, WI 53813  
 PHONE 608-723-6363 FAX 608-723-6702

JOB NUMBER 03S052  
 FIELDBOOK: TSDR, 9726  
 G:\T4NR2W\T4NR2W  
 H:\TIE\T4NR2W\129

DRAWN BY: SW AUSTIN  
 APPROVED: LL AUSTIN

# GRANT COUNTY CERTIFIED LAND CORNER

CORNER NUMBER 09

**CERTIFICATE:**

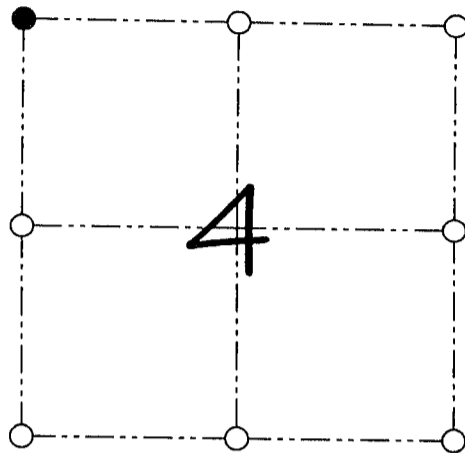
I, Larry L. Austin, do hereby certify that on the 11th day of November, 1995, I found evidence of the Northwest corner of Section 4, Town 3 North, Range 2 West, of the 4th Principal Meridian, and I re-established said corner according to the Wisconsin statutes as shown and described hereon.

Dated this 9th day of June, 2000

*Larry L. Austin*  
Larry L. Austin S-1903



SEAL



● = CORNER LOCATION  
NORTHWEST CORNER OF SECTION 4, T 3 N R 2 W TOWN OF HARRISON

**HISTORY OF ORIGINAL CORNER ESTABLISHMENT:**

Corner was originally set in 1833 by Robert Clark.  
In 1855 Overton found the original corner.  
No other record of the corner was found.

**DESCRIPTION OF CORNER EVIDENCE FOUND:**

I found an existing 2" iron pipe at this location. I accepted it's location as an occupied location. Verified it's location using E.D.M. methods.

**DESCRIPTION OF CORNER AND WITNESS MONUMENTS, references and accessories used to perpetuate the original or re-established location of this corner**  
WITNESS TO THE CORNER LOCATION: BOBBY SEDGWICK

**SKETCH:**

