

# GRANT COUNTY CERTIFIED LAND CORNER

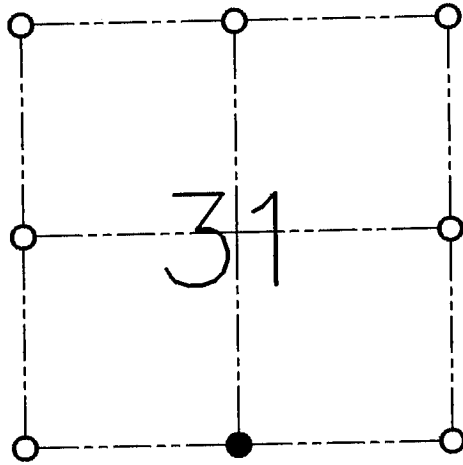
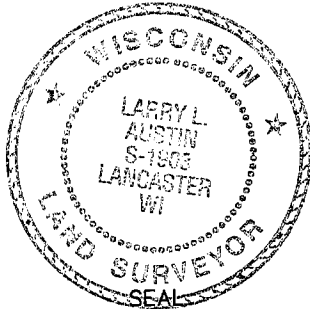
CORNER NO. 132

**CERTIFICATE:**

I, LARRY L. AUSTIN, DO HEREBY CERTIFY THAT ON NINETH DAY OF JULY, 1998, I FOUND OCCUPATIONAL EVIDENCE OF THE SOUTH 1/4 OF SECTION 31, TOWN 4 NORTH, RANGE 2 WEST, OF THE FOURTH PRINCIPAL MERIDIAN, AND I RE-ESTABLISHED SAID CORNER ACCORDING TO THE WISCONSIN STATUTES AS SHOWN AND DESCRIBED HEREON.

DATED THIS TWENTY-FIRST DAY OF JANUARY, 1999

*Larry L. Austin*  
LARRY L. AUSTIN S-1903



● = CORNER LOCATION

**SOUTH 1/4 OF SECTION 31  
T 4 N R 2 W  
TOWN OF ELLENBORO**

**HISTORY OF ORIGINAL CORNER ESTABLISHMENT:**

CORNER WAS SET IN 1832 BY SIBLEY.

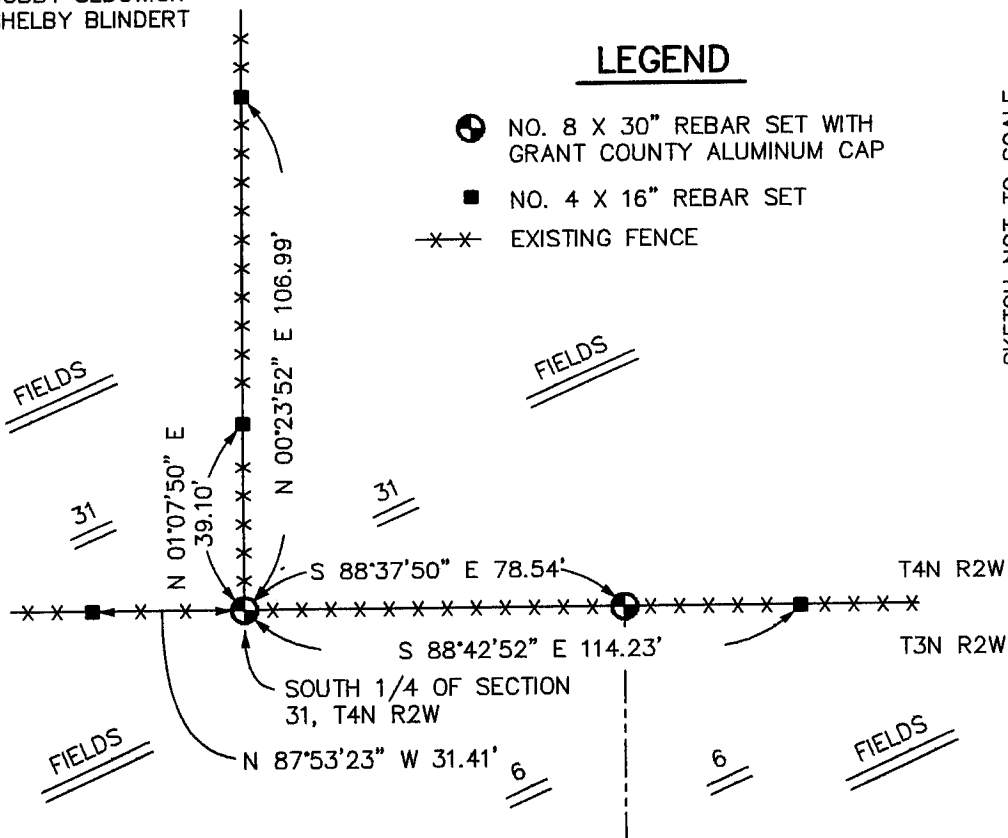
**DESCRIPTION OF CORNER EVIDENCE FOUND:**

I FOUND AN EXISTING FENCE CORNER. THIS LOCATION FIT WELL WITH CORNERS (MONUMENTED & OCCUPIED) IN THE AREA. VERIFIED THIS LOCATION USING E.D.M. METHODS.

**DESCRIPTION OF CORNER AND WITNESS MONUMENTS, REFERENCES AND ACCESSORIES USED TO PERPETUATE THE ORIGINAL OR RE-ESTABLISHED LOCATION OF THIS CORNER:**

WITNESS TO THE CORNER LOCATION:  
BOBBY SEDGWICK  
SHELBY BLINDERT

**SKETCH:**



# GRANT COUNTY CERTIFIED LAND CORNER

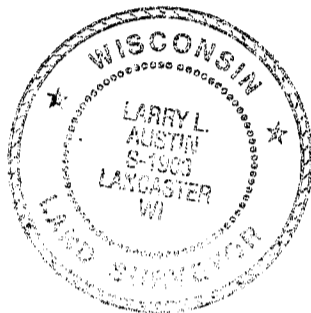
CORNER NO. 12

**CERTIFICATE:**

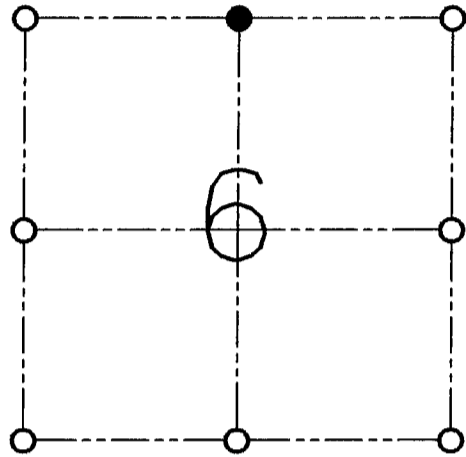
I, LARRY L. AUSTIN, DO HEREBY CERTIFY THAT ON NINTH DAY OF JULY, 1998, I FOUND NO EVIDENCE OF THE NORTH 1/4 CORNER OF SECTION 6, TOWN 3 NORTH, RANGE 2 WEST, OF THE FOURTH PRINCIPAL MERIDIAN, AND I RE-ESTABLISHED SAID CORNER ACCORDING TO THE WISCONSIN STATUTES AS SHOWN AND DESCRIBED HEREON.

DATED THIS TWENTY-FIRST DAY OF JANUARY, 1999

*Larry L. Austin*  
LARRY L. AUSTIN S-1903



SEAL



● = CORNER LOCATION

**NORTH 1/4 OF SECTION 6  
T 3 N R 2 W  
TOWN OF HARRISON**

**HISTORY OF ORIGINAL CORNER ESTABLISHMENT:**

CORNER WAS NOT ORIGINALLY SET

**DESCRIPTION OF CORNER EVIDENCE FOUND:**

I SET THE CORNER ONLINE WITH THE SOUTH 1/4 AND THE SOUTHEAST CORNER OF SECTION 31, T4N R2W AT THE RECORDED OFFSET OF THE NORTHEAST CORNER. THIS LOCATION FIT WELL WITH OTHER CORNERS IN THE AREA. VERIFIED THIS LOCATION USING E.D.M. METHODS.

**DESCRIPTION OF CORNER AND WITNESS MONUMENTS, REFERENCES AND ACCESSORIES USED TO PERPETUATE THE ORIGINAL OR RE-ESTABLISHED LOCATION OF THIS CORNER:**

**WITNESS TO THE CORNER LOCATION:**

BOBBY SEDGWICK  
SHELBY BLINDERT

**SKETCH:**

LEGEND

- NO. 8 X 30" REBAR SET WITH GRANT COUNTY ALUMINUM CAP
- NO. 4 X 16" REBAR SET
- x-x- EXISTING FENCE

