

GRANT COUNTY U.S. PUBLIC LAND SURVEY MONUMENT RECORD

INSTRUCTIONS: THIS RECORD SHALL SHOW THE LOCATION OF THE CORNER AND SHALL INCLUDE ALL OF THE FOLLOWING ELEMENTS (A THROUGH I)

(A) IDENTIFY THE CORNER BY REFERENCE TO THE U.S. PUBLIC LAND SURVEY SYSTEM

■ = CORNER MONUMENT RESTORED

WITNESSES TO CORNER LOCATION:

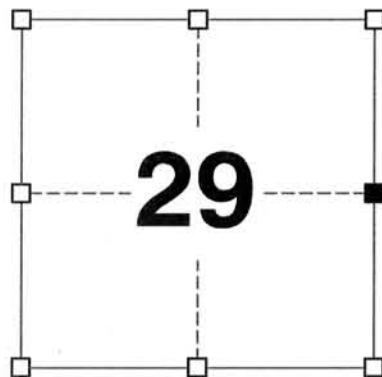
JAY P. ADAMS
JASON A. PELOCK

GEOGRAPHIC COORDINATES,
NAD 83 (2011) ADJUSTMENT:

LATITUDE: 42° 47' 28.2621"
LONGITUDE: 90° 37' 26.4951"

WISCONSIN COUNTY COORDINATE SYSTEM (WCCS), GRANT COUNTY,
NAD 83 (2011) ADJUSTMENT:

NORTHING: 502,992.19
EASTING: 842,237.62



SECTION 29
TOWN 4 NORTH, RANGE 2 WEST
TOWN OF ELLENBORO

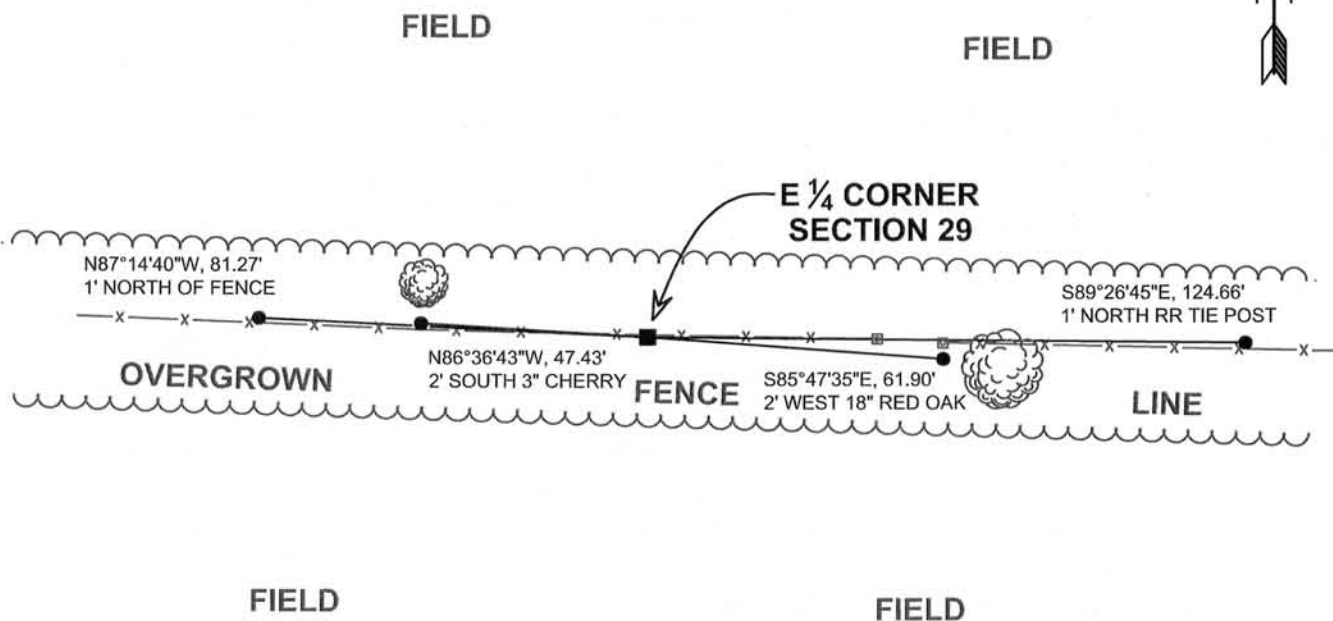
(B) DESCRIBE ANY RECORD EVIDENCE, MONUMENT EVIDENCE, OCCUPATIONAL EVIDENCE, TESTIMONIAL EVIDENCE, OR ANY OTHER MATERIAL EVIDENCE YOU CONSIDERED, AND WHETHER THE MONUMENT WAS FOUND OR PLACED.

I COULD FIND NO MONUMENTS OR BEARING TREES FROM THE ORIGINAL GOVERNMENT SURVEY OR THE HISTORIC COUNTY SURVEYOR'S RESURVEYS. I RECOVERED THE #8 REBAR REPORTED BY AUSTIN IN AN EAST-WEST FENCE LINE. THIS LOCATION MATCHES WITH DEED CALLS WEST OF THE CORNER. I ACCEPTED IT'S LOCATION AS THE BEST AVAILABLE EVIDENCE OF THE ORIGINAL GOVERNMENT CORNER AND PLACED A GRANT COUNTY ALUMINUM CAP OVER THE EXISTING REBAR.

(C) IN THE PLAN VIEW DRAWING BELOW, PROVIDE REFERENCE TIES TO AT LEAST 4 WITNESS MONUMENTS, (WITNESS MONUMENTS SHALL BE MADE OF CONCRETE, NATURAL STONE, IRON OR ANY OTHER EQUALLY DURABLE MATERIAL.) DESCRIBE WITNESS MONUMENTS.

(D) SHOW A PLAN VIEW DRAWING DEPICTING THE RELEVANT MONUMENTS AND REFERENCE TIES, WHICH IS SUFFICIENTLY DETAILED TO ENABLE ACCURATE RELOCATION OF THE CORNER MONUMENT IF IT IS DISTURBED.

- GRANT COUNTY ALUMINUM MONUMENT
PLACED OVER EXISTING #8 REBAR
- 3/4" x 18" IRON ROD
SET AS ACCESSORY



(E) DESCRIBE ANY MATERIAL DISCREPANCY BETWEEN THE LOCATION OF THE CORNER AS RESTORED OR REESTABLISHED AND THE LOCATION OF THAT CORNER AS PREVIOUSLY RESTORED OR REESTABLISHED BY DISTANCE AND DIRECTION. SHOW THE DISCREPANCY ON THE PLAN VIEW DRAWING UNDER (D), ABOVE. SHOW THE DISTANCES BETWEEN THE CORNER AS PREVIOUSLY RESTORED OR REESTABLISHED AND (1) THE CORNER AS RESTORED OR REESTABLISHED, AND (2) TO AT LEAST 2 OF THE WITNESS MONUMENTS SHOWN ON THE DRAWING IN (D) ABOVE.

N/A

(F) WAS THE CORNER RESTORED THROUGH ACCEPTANCE OF (1) AN OBLITERATED EVIDENCE LOCATION, OR, (2) A FOUND PERPETUATED LOCATION?

(2) A FOUND PERPETUATED LOCATION

(G&H) WAS THE CORNER REESTABLISHED THROUGH LOST CORNER PROPORTIONATE METHODS? IF SO, SHOW THE METHOD, INCLUDING THE DIRECTIONS AND DISTANCES TO OTHER PUBLIC LAND SURVEY CORNERS USED AS EVIDENCE OR USED FOR PROPORTIONING IN DETERMINING THE CORNER LOCATION.

N/A

CORNER HISTORY

ORIGINAL GOVERNMENT CORNER ESTABLISHED BY ROBERT CLARK IN THE FIRST QUARTER OF 1833.

IN A SURVEY DATED 7 AUGUST 1842, FREEMAN UTILIZED THIS CORNER.

IN TWO SURVEYS DATED 6 JULY 1853, JOHN CLARK VISITED THIS CORNER AND HE TOOK A NEW BEARING TREE.

IN A SURVEY DATED 17 OCTOBER 1856, OVERTON UTILIZED THIS CORNER.

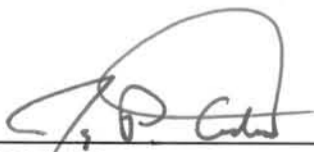
IN A CERTIFIED SURVEY MAP DATED 4 APRIL 2000, FILED IN VOLUME 5, PAGE 46 OF CERTIFIED SURVEY MAPS, LARRY AUSTIN REPORTED AN EXISTING #8 REBAR AT THIS LOCATION.

AFFIX LAND SURVEYOR SEAL

(I) I, JAY P. ADAMS, R.L.S. 2879, CERTIFY THAT THE CORNER LOCATION SHOWN ON THIS RECORD WAS DETERMINED BY ME OR UNDER MY DIRECTION AND CONTROL AND THAT THIS U.S. PUBLIC LAND SURVEY MONUMENT RECORD IS CORRECT AND COMPLETE TO THE BEST OF MY KNOWLEDGE AND BELIEF.

SIGNATURE

DATE



11 MARCH 2013

