

GRANT COUNTY U.S. PUBLIC LAND SURVEY MONUMENT RECORD

INSTRUCTIONS: THIS RECORD SHALL SHOW THE LOCATION OF THE CORNER AND SHALL INCLUDE ALL OF THE FOLLOWING ELEMENTS (A THROUGH I)

(A) IDENTIFY THE CORNER BY REFERENCE TO THE U.S. PUBLIC LAND SURVEY SYSTEM

■ = CORNER MONUMENT RESTORED

WITNESSES TO CORNER LOCATION:

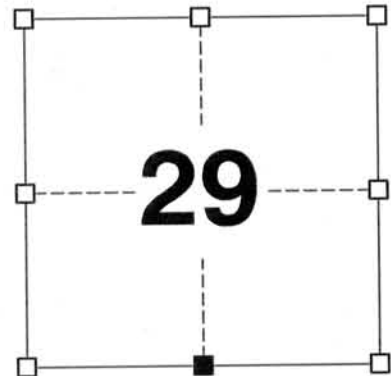
JAY P. ADAMS
JASON A. PELOCK

GEOGRAPHIC COORDINATES,
NAD 83 (2011) ADJUSTMENT:

LATITUDE: 42° 47' 02.7478"
LONGITUDE: 90° 38' 01.6753"

WISCONSIN COUNTY COORDINATE SYSTEM (WCCS), GRANT COUNTY,
NAD 83 (2011) ADJUSTMENT:

NORTHING: 500,403.71
EASTING: 839,619.48



SECTION 29
TOWN 4 NORTH, RANGE 2 WEST
TOWN OF ELLENBORO

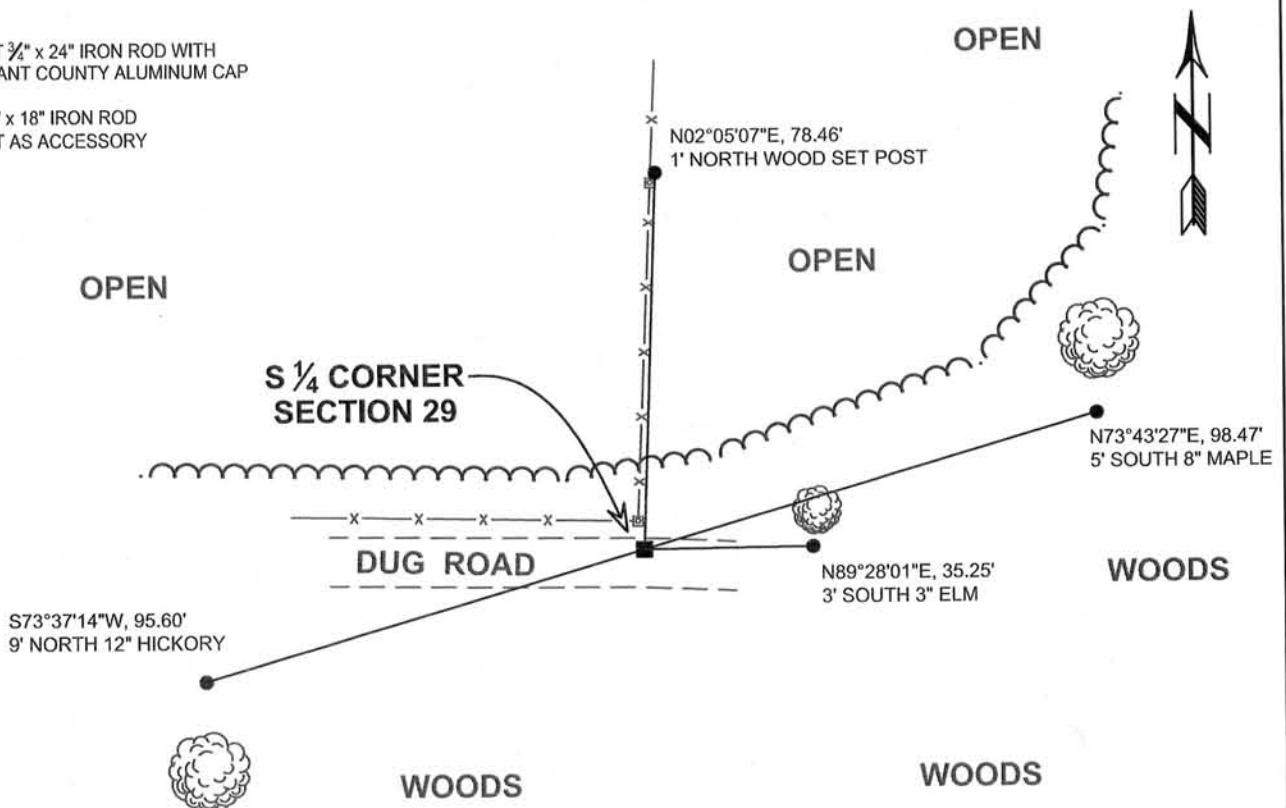
(B) DESCRIBE ANY RECORD EVIDENCE, MONUMENT EVIDENCE, OCCUPATIONAL EVIDENCE, TESTIMONIAL EVIDENCE, OR ANY OTHER MATERIAL EVIDENCE YOU CONSIDERED, AND WHETHER THE MONUMENT WAS FOUND OR PLACED.

I COULD FIND NO MONUMENTS OR BEARING TREES FROM THE ORIGINAL GOVERNMENT SURVEY OR THE HISTORIC COUNTY SURVEYOR'S RESURVEYS. I WAS ALSO UNABLE TO RECOVER EITHER THE #8 OR #10 REBAR REPORTED BY AUSTIN; APPARENTLY DESTROYED BY RECENT GRADING OF A DUG ROAD. I REMONUMENTED THE CORNER USING AREA SURVEYS BY AUSTIN WHICH FALLS 6' +/- SOUTH OF A TWO-WAY FENCE CORNER. I ACCEPTED THIS LOCATION AS THE BEST AVAILABLE EVIDENCE OF THE ORIGINAL GOVERNMENT CORNER AND REMONUMENTED IT WITH A 3/4" x 24" IRON ROD WITH A GRANT COUNTY ALUMINUM CAP.

(C) IN THE PLAN VIEW DRAWING BELOW, PROVIDE REFERENCE TIES TO AT LEAST 4 WITNESS MONUMENTS, (WITNESS MONUMENTS SHALL BE MADE OF CONCRETE, NATURAL STONE, IRON OR ANY OTHER EQUALLY DURABLE MATERIAL.) DESCRIBE WITNESS MONUMENTS.

(D) SHOW A PLAN VIEW DRAWING DEPICTING THE RELEVANT MONUMENTS AND REFERENCE TIES, WHICH IS SUFFICIENTLY DETAILED TO ENABLE ACCURATE RELOCATION OF THE CORNER MONUMENT IF IT IS DISTURBED.

- SET 3/4" x 24" IRON ROD WITH GRANT COUNTY ALUMINUM CAP
- 3/4" x 18" IRON ROD SET AS ACCESSORY



MAR 13 2013

110

(E) DESCRIBE ANY MATERIAL DISCREPANCY BETWEEN THE LOCATION OF THE CORNER AS RESTORED OR REESTABLISHED AND THE LOCATION OF THAT CORNER AS PREVIOUSLY RESTORED OR REESTABLISHED BY DISTANCE AND DIRECTION. SHOW THE DISCREPANCY ON THE PLAN VIEW DRAWING UNDER (D), ABOVE. SHOW THE DISTANCES BETWEEN THE CORNER AS PREVIOUSLY RESTORED OR REESTABLISHED AND (1) THE CORNER AS RESTORED OR REESTABLISHED, AND (2) TO AT LEAST 2 OF THE WITNESS MONUMENTS SHOWN ON THE DRAWING IN (D) ABOVE.

N/A

(F) WAS THE CORNER RESTORED THROUGH ACCEPTANCE OF (1) AN OBLITERATED EVIDENCE LOCATION, OR, (2) A FOUND PERPETUATED LOCATION?

(1) AN OBLITERATED EVIDENCE LOCATION

(G&H) WAS THE CORNER REESTABLISHED THROUGH LOST CORNER PROPORTIONATE METHODS? IF SO, SHOW THE METHOD, INCLUDING THE DIRECTIONS AND DISTANCES TO OTHER PUBLIC LAND SURVEY CORNERS USED AS EVIDENCE OR USED FOR PROPORTIONING IN DETERMINING THE CORNER LOCATION.

N/A

CORNER HISTORY

ORIGINAL GOVERNMENT CORNER ESTABLISHED BY ROBERT CLARK IN THE FIRST QUARTER OF 1833.

IN A SURVEY DATED 1 MARCH 1841, FREEMAN UTILIZED THIS CORNER.

IN A SURVEY DATED 16 NOVEMBER 1870, ALLEN REPORTED FINDING THE ORIGINAL GOVERNMENT CORNER.

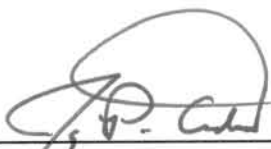
IN TWO SURVEYS DATED 17 OCTOBER AND 21 OCTOBER 1856, OVERTON UTILIZED THIS CORNER.

IN A CERTIFIED SURVEY MAP DATED 6 APRIL 2000, LARRY AUSTIN REPORTED AN EXISTING #8 REBAR AT THE CORNER.

IN A PLAT OF SURVEY DATED 30 DECEMBER 2003, LARRY AUSTIN REPORTED AN EXISTING #10 REBAR AT THE CORNER.

AFFIX LAND SURVEYOR SEAL

(I) I, JAY P. ADAMS, R.L.S. 2879, CERTIFY THAT THE CORNER LOCATION SHOWN ON THIS RECORD WAS DETERMINED BY ME OR UNDER MY DIRECTION AND CONTROL AND THAT THIS U.S. PUBLIC LAND SURVEY MONUMENT RECORD IS CORRECT AND COMPLETE TO THE BEST OF MY KNOWLEDGE AND BELIEF.



SIGNATURE

11 MARCH 2013

DATE

